

## WHAT'S IN OAHU

know the best places to explore,  
stay and relax

## RECOMMENDED EATS

enjoy the best food, drinks and  
coffee shops in Oahu

## ADVENTURES

experience fun activities together  
with your family and friends

EXPLORE

OAHU

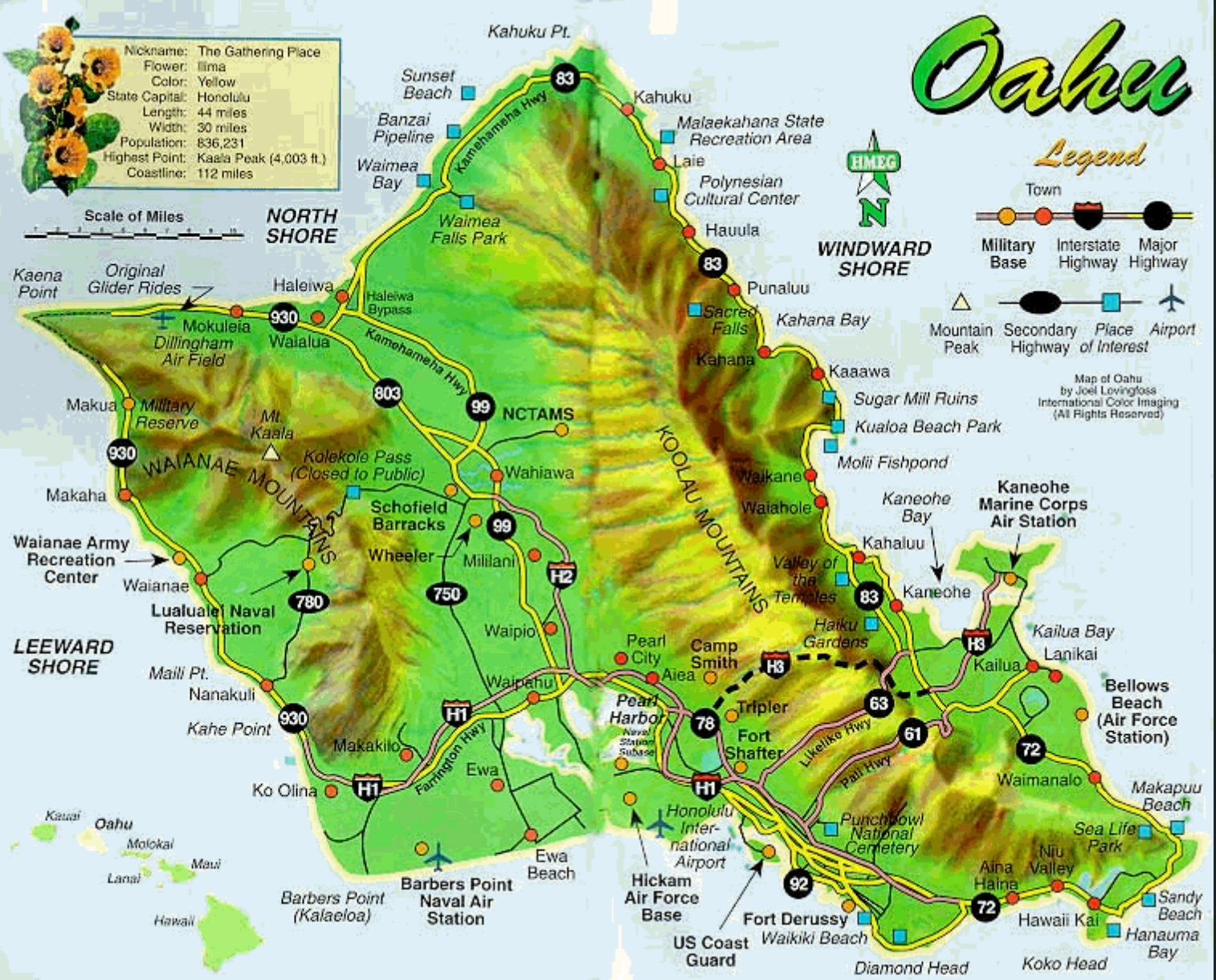
2020  
HONOLULU MAGAZINE  
BEST IN  
REAL ESTATE

# CON TENT



	WELCOME TO OAHU	<u>03</u>
<u>04</u>	MOVE-IN	
	SHOPPING	<u>14</u>
<u>17</u>	FURNISH IT!	
	SCHOOL DISTRICTS	<u>22</u>
<u>40</u>	TOP BEACHES	
	RELAX & ENJOY	<u>41</u>
<u>49</u>	LET'S EXPLORE	
	WATER ACTIVITIES	<u>54</u>
<u>59</u>	EXCITING ADVENTURES	
	KIDS' CORNER	<u>62</u>
<u>66</u>	RECOMMENDED EATS	
	USEFUL NUMBERS	<u>81</u>
<u>88</u>	MEET THE TEAM	





# WELCOME TO OAHU

Oahu, also known as "The Gathering Place", is the third-largest of the Hawaiian Islands. It is home to roughly one million people—about two-thirds of the population of the U.S. state of Hawaii. The island is within Honolulu County and the state capital, Honolulu, is on Oahu's southeast coast.







# MOVE IN!

The Hawaiian Islands are known for their beautiful beaches, tropical weather, and diverse landscapes. But living on one of these islands can be difficult if you aren't prepared. Before packing your bags and moving to the far corners of the Pacific Ocean, consider these considerations of living in Hawaii paradise:

Do you remember your first trip to Hawaii?

Hawaii is a wonderful place to visit. But if you have never lived or worked here, it might be difficult to find a job and get settled in your new home. Before moving here, plan on at least two to three weeks to visit the islands and explore the neighborhood during the day and at night so that you can decide which island fits you best.

The best thing about living in Hawaii is the weather. People say that it's always sunny and warm here, but not all the time. The island does have rain, cold nights too.

Can you afford to live in Hawaii?

While the average sales price of a single-family home on Oahu is \$1,050,000, Hawaii maybe an expensive place to live unless you know where the local shops are. However, property taxes are one of the lowest percentages in the country.

Are you able to get a job before or even after moving to Hawaii?

Some ways to find a job in Hawaii are through the US military, the University of Hawaii, or by applying at stores and restaurants directly.



If you do not have any connections in Hawaii, your best bet is to apply for jobs online; some companies will let you work from anywhere. You can visit [www.gohawaii.gov](http://www.gohawaii.gov) for more information about job offers.

Another factor that often surprises newly relocated people to the island is that a similar job position on the Mainland will typically pay much more there than in Hawaii. According to [payscale.com](https://www.payscale.com), the average annual salary in Honolulu in December 2021 is \$68,000. Trends in wages increased by 1.8% in Q3 2021. The cost of living in Honolulu is 88% higher than the national average. The most popular occupations in Honolulu are Project Manager, (Unspecified Type / General), Operations Manager, and Project Engineer which pay between \$41k and \$123k per year. The most popular employers in Honolulu are Hawaiian Airlines Inc, Y. Hata, and Hawaii Medical Service Association (HMSA)

Are you familiar with the Hawaii housing market?

Closed sales activity for single-family homes lags behind the condo market, with single-family properties marking just a 9.8% increase in sales compared to a 47.7% jump for condos in November. The median prices for single-family homes and condos tied the previously set record prices at \$1,050,000 and \$500,000, respectively.

Do you know about "Hawaiian time?"

While punctuality is important, in order to enjoy the island life you must embrace island time. Someone once said that when you're in Hawaii, time slows down and this is one of the most accurate descriptions of island time. It's not that people are lazy, it's just that the pace of life is slower and you can't rush the ocean.

Do you have a pet?

Hawaii is a rabies-free state, and since December of 2006 the island has been officially designated as a rabies-free state by the Centers for Disease Control. To prevent rabies from entering the state, the current law requires that dogs, cats and carnivores complete either the 120-day or 5 Day Or Less rabies quarantine. The law also requires that entire cost of the rabies quarantine program be paid by the users of the quarantine facility.

- The 120-day quarantine program costs \$1,080 per pet.
- The 5 Day Or Less quarantine program costs \$244 per pet.
- The direct release program costs \$185 per pet.

Here is a summary of procedures for pet quarantine:

- 10 days before you arrive, assure your cat or dog has a working electronic microchip.
- More than 30 days before you arrive, assure your cat or dog has been vaccinated at least twice for rabies in its lifetime. The vaccines must be administered more than 30 days apart. Obtain a rabies vaccination certificate for each of the vaccines from your veterinarian.
- More than 30 days before you arrive, do a FAVN Rabies Antibody Test at an approved lab. Once you have a successful test, wait at least 30 days before you arrive in Hawaii, or your pet will be subject to quarantine for \$14.30 each day along with a \$244.00 fee.
- Complete all the documents and send them in a set, so they arrive 10 days before your arrival.



- Schedule flights to arrive by 3:30 p.m., so the Airport Animal Quarantine Holding Facility has time to inspect and release your pet before 5 p.m. closing time. Otherwise your pet will have to stay overnight for an additional \$59 fee.
- Be ready to pay the \$185 Direct Airport Release fee upon arrival.

The U.S. Department of Defense may reimburse active duty military members with dogs or cats up to \$550 per family for quarantine expenses. Military members should check with their command on whether this allotment is available to them. Prices are subject to change.

If you are moving to Hawaii with a furry friend, make sure you start the pet process early. The good news is that when your pet finally is reunited with you in Hawaii, there are many dog parks and other animal-friendly condos and communities to find a home.

Please visit <https://hdoa.hawaii.gov/ai/faqs> for more information.





# ON THE MOVE

Moving to Hawaii can be intimidating, but with the right Honolulu moving company on your side, it can be a breeze. These movers deliver your belongings safely and relieve you of the worry of moving. Check out our picks for the finest moving companies in Honolulu below.

- North American Van Lines (866) 214-8329  
Partners with independent moving companies across the U.S. for local, long-distance and international moves. Sells packing supplies and tools. Charges from \$4,500 to \$5,000 for a summertime move from the Midwest to the East Coast.
- Allied Van Lines (877) 464-0787  
Offers basic and full-service moving packages for local, interstate and international moves. Charges based on weight of items and miles traveled. Average cross-country moves cost \$3,500. Storage options available.
- National Van Lines (844) 846-8693  
Handles local, interstate, cross-country, international and specialty moving and logistics services. Performs in-home estimates to ensure quotes are 100% accurate. Offers temporary warehouse storage.
- ELH Moving Company (808) 258-2444  
Provides island-wide residential moving services. Offers moving, packing, unpacking, storage and cleaning. Uses a covered truck that accommodates large and small jobs.

- **Emergency Moves** (808) 258-2444  
Provides relocation services for residential, military and specialized moves, including foreclosures, evictions and federal government transitions. Transports pianos, hot tubs and large equipment.
- **Hawaii Moving Services** (808) 949-6683  
Provides packing and relocation services for residential moves. Gives custom quotes. Employees are trained and fully licensed. Offers self-storage with 365-day availability and junk removal services.
- **JF Movers** (808) 721-5348  
Handles local residential relocations. Offers military and senior discounts. Gives free estimates. Uses trucks of different sizes.
- **Royal Hawaiian Movers** (808) 427-2695  
Provides moving, storage, freight and specialty services. Offers full-service moves for hotels and offices with FF&E shipping and installation.
- **WestPac International** (808) 845-9711  
Offers residential moving and storage services for relocations to and within Honolulu, Hawaii. Provides packing materials, including boxes and mattress protectors. Performs international moves and has weekend moving services.





# LOCAL MOVERS IN OAHU

- **ASAP Movers**  
(Movers, Packing Services)  
94-207 Waipahu St Ste 135 Waipahu  
(808) 271-5795  
[asapmovers808.com](http://asapmovers808.com)
- **Honolulu Movers**  
(Movers, Self Storage)  
(808) 465-2889  
[honolulumovers.company](http://honolulumovers.company)
- **Making Moves**  
(Movers)  
[makingmoveshawaii.com](http://makingmoveshawaii.com)  
(808) 693-5907
- **You Move Me Honolulu**  
(Movers, Packing Services, Packing supplies)  
821 Cedar St Unit B Honolulu,  
[youmoveme.com](http://youmoveme.com)  
(808) 379-3850
- **Hero Moving Hawaii**  
(Movers, Self Storage, Packing Services)  
94-990 Pakela St Ste E2 Waipahu  
[heromovinghi.com](http://heromovinghi.com)  
(808) 650-3458
- **Lucky's Delivery & Moving Services**  
(Movers)  
(808) 450-6363  
[luckysmoving.net](http://luckysmoving.net)
- **Ewa Moving Co.**  
(Movers)  
91-593 Pohakupuna Rd Ewa Beach  
(808) 300-0223  
[www.ewamoving.com](http://www.ewamoving.com)
- **Kama'aina Movers**  
(Movers, Junk Removal & Hauling, Furniture Assembly)  
(808) 275-7155  
[www.kamaainamovers.com](http://www.kamaainamovers.com)
- **Endless Summer Movers Services**  
(Movers, Packing Services)  
Kailua, HI  
(808) 321-4954  
[endlesssummermovers.com](http://endlesssummermovers.com)
- **WikiWiki Express Delivery**  
(Couriers & Delivery Services, Shipping Centers, Movers)  
856 Ilaniwai St Ste 202 Honolulu  
(855) 945-4945  
[wikiwikiexpress.com](http://wikiwikiexpress.com)
- **Oahu Movers**  
(Movers)  
825 Keeaumoku St Ste 1-129 Honolulu  
(808) 922-6683  
[www.OahuMs.com](http://www.OahuMs.com)





# LIVING IN OAHU

## LOCALS' FAVORITE PLACES TO LIVE ON OAHU

- Maunawili, (Windward)

The neighborhood is quiet and peaceful, with beautiful views of the mountains on every side.

- Honolulu City (Honolulu)

Great central location that has access to multiple freeways. Close to malls, schools and grocery stores. The city is diverse as it has a mix of all ethnicities.

- Kailua (Windward)

The community is so welcoming and embrace you with open arms. Everyone stays connected and knows each other well.

- Kaneohe, Honolulu (Windward)

One of the two largest residential communities on the windward side of O'ahu. Kaneohe is a more affordable town with a diversity of real estate options. Most single family homes will have three or more bedrooms and two or more baths, and a carport instead of an enclosed garage.

- Mililani, Honolulu (Windward)

Mililani is a very family-friendly place to live. There are lots of parks, playgrounds, and recreation centers for all of your entertainment purposes.

- Mililani Mauka (Central)

Represents suburban life well. Away from the busy city life, Mauka a quiet community with walking trails and excellent schools.



- Waikele (Central)

Waikele is very neighborhood friendly. There are many things offered here such as the gym, a mall, both fast food and dine in restaurants, an appliance store, and everything you will need.

- Pearl City (Central)

The city is filled with many friendly faces, and with wonderful schools and close to shopping centers.

- Kapolei (Leeward)

Kapolei is a very nice neighborhood and a convenient city to live in because our essentials are fairly close by such as: supermarket, doctors office, education, the mall is all in one city.

- Waimalu (Central)

A safe and peaceful town where everyone is closely knit and know each other. It is right next to Pearl Harbor, which gives a nice view of the water.

- Ocean Pointe (Leeward)

Ocean Pointe is a pretty family-friendly and modern neighborhood. It has nearby schools (Elementary through High School), nice housing, large grocery stores, a few restaurants, and a mall located 5 minutes away.

- Kahalu'u (Windward)

A little slower pace than Honolulu and still only 30 minutes to town. Five minutes away from the beach and hiking. Awesome place to live for those who like the outdoors.

- Waipahu (Central)

It's a great community where people are friendly and welcoming. The neighbors are really great and look out for each other. It's in the central part of the island so driving to other parts of the island is easy.



# AFFORDABLE PLACES TO LIVE ON OAHU

- Aiea, Central

Home to the largest indoor shopping center, Aiea is just west of the Honolulu but also very close to the beach. The perfect mix of urban and tropical.

- Hauula, Windward Side

A small town on the island's Windward Side, Hauula is fronted by the ocean and backed by the Hauula Forest Reserve.

- Halawa, Central

With an advantageous location near the local international airport, Halawa currently has undeniably great deals on properties.

- Ewa, West Side

Once a rural plantation town, Ewa is growing into a charming suburban area. Located next to Kapolei the area has an abundance of potential.

- Kahuku, North Shore

On the world-famous North Shore and affordable, Kahuku has many prime properties for sale. Residents also have easy access to the secluded, gorgeous Kahuku Beach.

- Maili, West Side

Maili is home to Maili Beach Park, a long, white sand beach with crystal blue waters and entertaining shore break.

- Waianae, West Side

Waianae is known for its incredible abundance of marine life. One can expect to see dolphins, whales, turtle, and so much more off its shores.



# MOST LUXURIOUS PLACES TO LIVE ON OAHU

- Kailua, Windward

Kailua was once a sleepy and undiscovered town but it's now known worldwide for its stunning beaches. Most homes are beachfront or walking distance from the beach.

- Lanikai, Windward

Lanikai means “heavenly oceans” which describes the beaches that front the beach town in the best way possible.

- Pupukea, North Shore

Pupukea is a secluded, little town on the island's North Shore, each property including lots of privacy. Pupukea Beach is a sweet, little beach with phenomenal snorkeling.

- Sunset, North Shore

Sunset is best known for Sunset Beach, a radical big wave surf spot that erupts every winter. Every year, hundreds of professional surfers flood the area to get in on the action.

- Kahala, Honolulu

It is famous in Hawai'i for its large concentration of expensive real estate and beach-front properties, which include some of the most expensive in the entire state.

- Portlock, Honolulu

It is an upscale neighborhood and has always been a prime real estate for some time due to the vista of both the bay and Diamond Head residents enjoy.

- Diamond Head

This luxurious neighborhood is one of the most desirable neighborhoods on Oahu. It is one of the most coveted neighborhoods in Hawaii that offers an ambiance like no other has everything you could ever need.





# SHOPPING

## GROCERY STORES

- **COMMISSARY**

If you're a member of a military family, you've probably shopped at a commissary. Commissaries are grocery stores operated by the Defense Commissary Agency (DeCa) and are found on military bases throughout the world. Items sold at the commissary are tax-free and priced at cost, plus a 5% surcharge.

- **FOODLAND FARMS**

It has 32 locations around Hawaii. They provide all types of produce and meat. The price is competitive and offers different types of cuisines and dishes. Foodland is proud to be Hawaii's Home for Poke! Made fresh daily and featuring the flavors the customers love, their poke has been voted "Hawaii's Best Poke" for 9 years in a row.

- **TIMES**

The most local grocery. Customer service is great and friendly. They have a weekly sales. Have cheaper deals with produce and always have fresh meat and produce



- **SAFEWAY**

A huge and famous grocer in Oahu. They provide great offerings. Aside from produce, seafood and meat, they also have necessities and essentials as well. They have daily and weekly sales ads and is known for \$5 Friday.

- **COSTCO**

The largest retailer in the list is Costco. It is a one-stop shop that gives you an opportunity to buy in bulk. You can buy anything in Costco. From toy, to clothes, to food, medicines and even liquors. They are also known for their restaurants and cafeteria. In order to shop at Costco, you need a membership card which covers through out the year .

- **WHOLE FOOD**

The most complete grocery experience in Oahu. Their produce, meat seafood and generic items are some the best you can find in the area. They are also famous for their prepared food section. If you are vegan, they will also provide you something that you would be able to take advantage of. It is one of the cheaper options through out Oahu.

- **SAM'S CLUB**

They offer these safer shopping options: Free curbside Pickup. Just shop online, pay and park. They will load your car for you. Contact-free shopping with Scan & Go. Download the Sam's Club app, and you can scan items as you shop, pay from your phone and skip the checkout line. Early shopping for Plus members, Monday to Saturday, 8-10am."

- **TARGET**

A great place to shop in this national chain store. Their price are always competitive with plenty of selections. They are also offering contactless shopping options like Drive Up and Same Day Delivery through the Target App

# FLEA AND STREET MARKET

- **Kailua Farmers Market**

Keolu Shopping Center , 1090 Keolu Drive

Thursdays, 4:00 PM - 7:00 PM & Sundays from 8:00 AM to 12:00 NN.

This market features amazing foods and the nicest people -- very full of aloha!

- **Aloha Stadium Swap Meet & Marketplace**

99-500 Salt Lake Blvd Aiea.

Wednesdays & Saturdays, 8:00 AM to 3:00 PM

Sundays, 6:30 AM - 3:00 PM.

The Aloha Stadium Swap Meet is bargain central for cheap souvenirs and Hawaiian shirts. Fresh coconuts keep you hydrated while you shop. You can buy things here on a cash basis only.

- **Mililani Farmers Market**

95-1200 Meheula Pkwy Mililani High School

Sundays, 8:00 AM to 11:00 AM.

A wonderful place to pick up your fruits and veggies on a Sunday morning in the upper parking lot of the school.

- **Hale'iwa Farmers' Market**

59-864 Kamehameha Hwy Haleiwa

Thursdays, 2:00 PM - 6:00 PM

A small Farmer's Market with varieties of products to choose from. They have fresh vegetables, fruit, prepared entrees, souvenirs, jewelry, clothing and more are offered.

- **Ohana Hale Marketplace**

Ward Village

Monday-Saturday, 10:00 AM - 6:00 PM

Sunday, 10:00 AM - 5:00 PM

Hawaii's largest indoor marketplace for local businesses, bringing together a complete menu of products and services in one building.





# FURNISH IT!

- **ABC Furniture \$\$**

- 94-137 Leoleo St Waipahu, HI 96797

ABC Furniture is a furniture store providing casual, classic, island, and contemporary furniture on the islands of Oahu and Hawaii since 1977. ABC Furniture supplies furniture for residential, commercial, and restaurant uses, with a focus on affordability, variety, and excellent customer service.

- **Bali Aga \$\$**

- 307 Kamani St Honolulu, HI 96813

Bali Aga is a furniture store located in Honolulu, Hawaii and specializing in one-of-a-kind pieces from South East Asia. Bali Aga has been in operation since 2000, and seeks to combine traditional and modern designs that celebrate Hawaii's unique multicultural heritage. Products on offer include custom made furniture, complete lines of indoor and outdoor furniture, and accessories and accent pieces.

- **SlumberWorld \$\$\$**

- 707 Manawai St. Kapolei, HI 96707
- 98-107 Kamehameha Hwy Aiea, HI 96701
- 4360 Mala'ai St. Honolulu, HI 96818
- 702 S. Beretania St. Honolulu, HI 96813
- 455 Ward Ave Honolulu, HI 96814

Locally owned family company and the only bedding store in Hawaii offering the best selection of brand name beds including Beautyrest, Serta, and Tempur-Pedic. Our bedding specialists are trained to help you find the perfect bed so that you have the sleep you deserve and wake up refreshed every day.

- Fisher Hawaii \$\$

- 950 Mapunapuna Street Honolulu, HI 96819
- 690 Pohukaina St Honolulu, HI 96813
- 1072 Fort St Mall Honolulu, HI 96813

Fisher Hawaii is Hawaii's largest, locally owned and managed home and office supply warehouse and retail store, with three locations in Honolulu. In business since 1925, Fisher Hawaii offers household products, office products, industrial products, school supplies, business machines, educational tools, art & craft supplies, lamps and lighting, storage and shelving, small electronics, and snacks, all in a spacious and air-conditioned retail space.

- Red Knot Hawaii \$\$

- 98-107 Kamehameha Hwy Aiea, HI 96701
- 707 Manawai St Kapolei, HI 96707
- 702 S Beretania St Honolulu, HI 96813

Red Knot is a Hawaiian furniture store offering affordable home furnishings at three locations in Honolulu, Kapolei, and Aiea. Red Knot specializes in modern, stylish designs for savvy cost-conscious consumers. Furniture designs on offer include selections for the living room, dining room, and bedroom, as well as rugs and pillows and lighting options.

- Pacific Home \$\$\$

- 720 Kapiolani Blvd, Honolulu, HI 96813

Pacific Home, located in Honolulu, Hawaii, has been in the furniture and interior design business since 2005. Its retail furniture catalog offers more than 150 trusted contemporary-island furniture brands for dining rooms, living areas, bedrooms, and outdoor spaces. It also carries a range of home decor and accessories such as lighting fixtures, rugs, and mirrors.



- **BedMart Mattress Superstores** \$\$

- 74-5583 Luhia St Suite A3 Kailua-Kona, HI 96740
- 1132 Kuala St #402, Pearl City
- 201 Hamakua Drive Suite C-103, Kailua
- 94-418 Maikoiko St Waipahu, HI 96797

BedMart has the largest selection of mattresses in the Pacific Northwest. They carry every mattress size, comfort levels ranging from firm to soft mattresses, and mattress types like hybrid, memory foam and more from top brands like Stearns & Foster, Sealy, Kingsdown, Eastman House, Corsicana, BedTech and more.

- **HomeWorld Furniture** \$\$

- 707 Manawai St. Kapolei, HI 96707
- 98-107 Kamehameha Hwy Aiea, HI 96701
- 4360 Malaai St Honolulu, HI 96818
- Ashley HomeStore Ward (Affiliated Store)
- 455 Ward Ave Ward, HI 96814
- Ashley Gallery Honolulu 702 South Beretania Street  
Honolulu, HI 96813

HomeWorld Furniture is a Hawaii-based retailer selling traditional to contemporary wares. HomeWorld Furniture has stores on the islands of Hawaii, Oahu, Hilo, Kona, and Maui, as well as an online retail site. In business for over 20 years, HomeWorld carries name brand products for the living room, bedroom, home office, and dining room, including accent and entertainment pieces.



- **Hawaiian Discovery Furniture \$\$\$**

- 905 Kapaa Quarry Place #1301, Kailua, HI 96734

Hawaiian Discovery Furniture is a furniture store operating Kailua, HI, and serving as a retail location for the Tonga Trading Co., Ltd., a purveyor of fine South Pacific handcrafts and furniture since 1969. Hawaiian Discovery Furniture specializes in supplying furniture for the hotels, businesses, and other customers in the hospitality industry, as well as outdoor furniture, educational furniture, and residential furniture. The products sold at Hawaiian Discovery Furniture are affordable, yet upscale, featuring attractive, functional, and well-made designs in multiple options.

- **Martin & MacArthur \$\$\$**

- Sheraton Waikiki, 2255 Kalakaua Ave #14 Honolulu, HI 96815
- Hilton Hawaiian Village, 2005 Kalia Road Honolulu, HI 96815
- The Royal Hawaiian Hotel, 2259 Kalakaua Ave Honolulu, HI 96815
- Magic in Paradise, 2255 Kalakaua Ave #6 Honolulu, HI 96815
- Moana Surfrider, 2365 Kalakaua Ave, #2 Honolulu, HI 96815
- International Market Place, 2330 Kalakaua Ave, #145 Honolulu, HI 96815
- Ala Moana Shopping Center, 1450 Ala Moana Blvd #2045 Honolulu, HI 96814

Martin & MacArthur is the longest-running fine furniture maker in Hawaii. For three generations, our Hawaii craftsmen have made fine furniture with beautiful Koa, a wood grown only in Hawaii. With 35 furniture craftsmen, Martin & MacArthur is the only retailer that actually makes all its furniture in Hawaii. All other retailers import their furniture from Asia. The company is proud to be recognized as “the fine furniture maker of ‘Iolani Palace.”





- **Ross' Hawaii \$\$**

- 401 Mokauea St. Honolulu, Hawaii

Ross' Hawaii is an appliance, furniture, and mattress store with two locations in Hawaii. A locally owned and operated business since 1975, Ross's Hawaii makes and sells new and re-manufactured beds, as well as rebuilt appliances. Furniture and mattresses are available at the Dillingham Plaza location, which sells furniture for the living room, dining room, and bedroom, as well as corporate and hotel spaces.

- **Coco's Trading Post \$\$**

- 600 Kailua Road, #112 Kailua, HI 96734
- 66-437 Kamehameha Hwy, #101A Haleiwa, HI 96712

These Kailua- and Haleiwa-based shops offer a curated collection of products, including beautiful rattan and island-inspired furniture. Owner Nicci Lee is a multifaceted creative: interior designer, furniture designer, floral artist and more. Lee finds furniture, home decor, vintage items, handmade goods and sustainably minded brands from Hawaii and beyond.

- **INspiration Interiors \$\$\$**

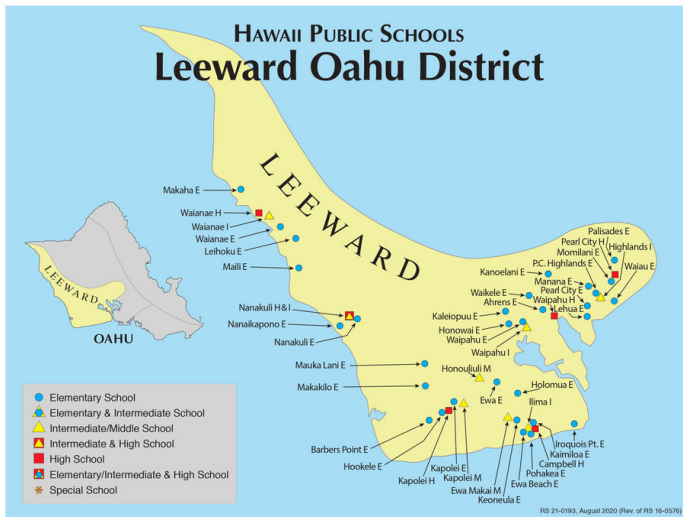
- Kapolei Commons 4450 Kapolei Parkway Kapolei HI. 96707

INspiration Interiors is one of the most well-known furniture and design centers on Oahu, and for good reason. At its Honolulu location, the Honolulu Design Center, and its other locations in Kapolei and Aiea, you'll find top brands—Greenington Bamboo, Ekornes and Natuzzi Italia, to name just a few—for your living room, dining room, office space, outdoor area, bedroom and beyond. It's also worth mentioning that the Honolulu Design Center is also home to Amuse Wine Bar and Stage Restaurant, so your shopping trip can be that much sweeter.



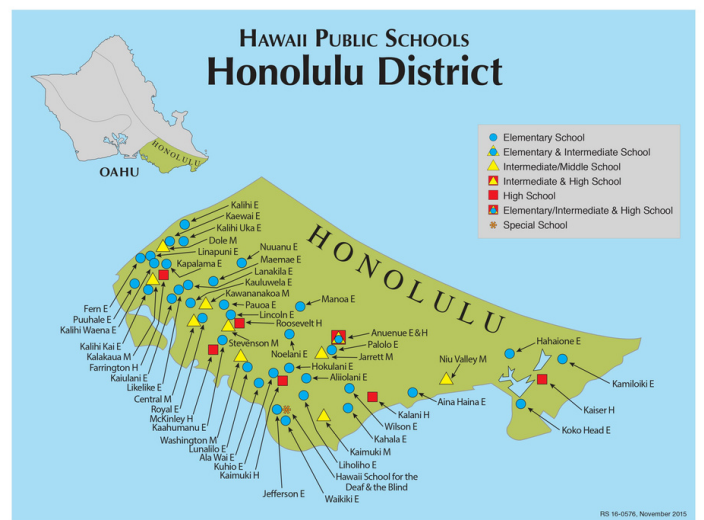
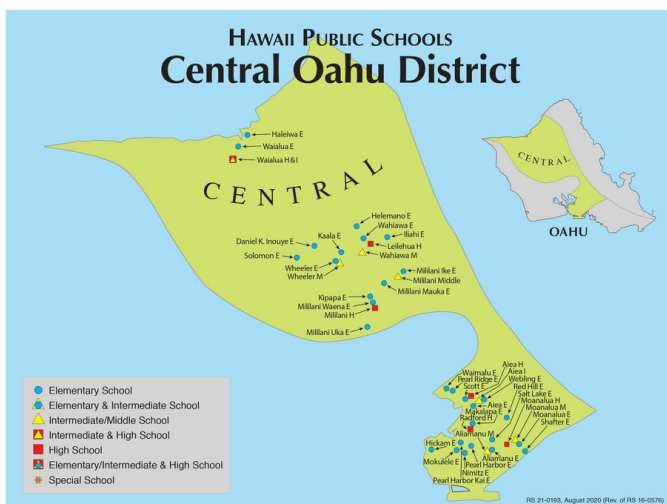
# SCHOOLS BY DISTRICTS

CURIOUS ABOUT



WHAT MAKES A

SCHOOL GREAT?



Know the latest on school ranking and find out which schools in Oahu get the best education by clicking [here](#).

# WINDWARD DISTRICT

- Sunset Beach Elementary School (PK, K-6)
  - 59-360 Kamehameha Hwy Haleiwa
  - [hawaiipublicschools.org](http://hawaiipublicschools.org)
  - (808) 638-8777
- Kahuku Elementary School
  - 56-170 Pualalea St. Kahuku
  - [hawaiipublicschools.org](http://hawaiipublicschools.org)
  - (808) 293-8980
- Kahuku High & Intermediate School (7-12)
  - 56-490 Kamehameha Hwy Kahuku
  - [hawaiipublicschools.org](http://hawaiipublicschools.org)
  - (808) 293-8950
- Laie Elementary School (PK, K-6)
  - 55-109 Kulanui St. Laie
  - [hawaiipublicschools.org](http://hawaiipublicschools.org)
  - (808) 293-8965
- Ka'elepulu Elementary School (PK, K-6)
  - 530 Keolu Dr Kailua
  - [hawaiipublicschools.org](http://hawaiipublicschools.org)
  - (808) 266-7811
- President Theodore Roosevelt High School (9-12)
  - 1120 Nehoa St. Honolulu
  - [hawaiipublicschools.org](http://hawaiipublicschools.org)
  - (808) 587-4600
- Waikiki Elementary School (PK, K-5)
  - 3710 Leahi Ave, Honolulu
  - [waikikischool.org](http://waikikischool.org)
  - (808) 971-6900
- Momilani Elementary School (PK, K-6)
  - 2130 Hookiekie St Pearl City
  - [hawaiipublicschools.org](http://hawaiipublicschools.org)
  - (808) 453-6444
- Pauoa Elementary School (PK, K-5)
  - 2301 Pauoa Rd Honolulu
  - [hawaiipublicschools.org](http://hawaiipublicschools.org)
  - (808) 587-4500
- Mililani Ike Elementary School (PK, K-5)
  - 95-1330 Lehiwa Dr Mililani
  - [hawaiipublicschools.org](http://hawaiipublicschools.org)
  - (808) 626-2980



# WINDWARD DISTRICT

- Kailua Intermediate School (7-8)
  - 145 South Kainalu Dr Kailua
  - [kis.k12.hi.us](http://kis.k12.hi.us)
  - (808) 263-1500
- Kalaheo High School (9-12)
  - 730 Iliaina St. Kailua
  - [hawaiipublicschools.org](http://hawaiipublicschools.org)
  - (808) 254-7900
- Aikahi Elementary School (PK,K-6)
  - 281 Iliha St Kailua
  - [hawaiipublicschools.org](http://hawaiipublicschools.org)
  - (808) 254-7944
- Innovations Public Charter School (K-8)
  - 75-5815 Queen Kaahumanu Hwy Kailua-Kona
  - [ipcs.info](http://ipcs.info)
  - (808) 327-6205
- Waikele Elementary School (PK, K-6)
  - 94-1035 Kukula St Waipahu
  - [hawaiipublicschools.org](http://hawaiipublicschools.org)
  - (808) 677-6100
- Maunawili Elementary School (PK, K-6)
  - 1465 Ulupii St Kailua
  - [hawaiipublicschools.org](http://hawaiipublicschools.org)
  - (808) 266-7822
- Kainalu Elementary School (PK, K-6)
  - 165 Kaiholu St. Kailua
  - [hawaiipublicschools.org](http://hawaiipublicschools.org)
  - (808) 266-7835
- West Hawaii Explorations Academy Public Charter School (6-12)
  - 73-4500 Kahilihili St Kailua-Kona
  - [whea.net](http://whea.net)
  - (808) 327-4751
- Enchanted Lake Elementary School (PK, K-6)
  - 770 Keolu Dr Kailua
  - [hawaiipublicschools.org](http://hawaiipublicschools.org)
  - (808) 266-7800
- Kapunahala Elementary School (PK, K-6)
  - 45-828 Anoi Rd Kaneohe
  - [hawaiipublicschools.org](http://hawaiipublicschools.org)
  - (808) 233-5650

# WINDWARD DISTRICT

- Kaneohe Elementary School (PK, K-6)
  - 45-495 Kamehameha Hwy Kaneohe
  - hawaiipublicschools.org
  - (808) 233-5633
- Mokapu Elementary School (PK, K-6)
  - 1193 Mokapu Rd Kailua
  - hawaiipublicschools.org
  - (808) 254-7964
- Gov. Samuel Wilder King Intermediate School (7-8)
  - 46-155 Kamehameha Hwy Kaneohe
  - hawaiipublicschools.org
  - (808) 233-5727
- Castle High School (9-12)
  - 45-386 Kaneohe Bay Dr. Kaneohe
  - hawaiipublicschools.org
  - (808) 233-5600
- Kailua High School (9-12)
  - 451 Ulumanu Dr Kailua
  - hawaiipublicschools.org
  - (808) 266-7900
- Kealakehe High School (9-12)
  - 74-5000 Puohulihuli St. Kailua-Kona
  - hawaiipublicschools.org
  - (808) 327-4300
- Ka'ohao School (PK, K-6)
  - 140 Alala Rd. Kailua
  - kaohaoschool.org/kaohao
  - (808) 266-7844
- Ahuimanu Elementary School
  - 47-470 Hui Aeko Pl Kaneohe
  - hawaiipublicschools.org
  - (808) 239-3125
- He'eia Elementary School (PK, K-6)
  - 42-2-2 Haiku Rd. Kaneohe
  - hawaiipublicschools.org
  - (808) 233-5677
- Lanakila Elementary School (PK, K-5)
  - 717 North Kuakini St. Honolulu
  - hawaiipublicschools.org
  - (808) 587-4466



# LEEWARD DISTRICT

- Momilani Elementary School (PK, K-6)
  - 2130 Hookiekie St Pearl City
  - hawaiipublicschools.org
  - (808) 453-6444
- Palisades Elementary School (PK, K-6)
  - 2306 Auhuhu St Pearl City
  - hawaiipublicschools.org
  - (808) 453-6550
- Manana Elementary School (PK,K-6)
  - 1147 Kumano St Pearl City
  - hawaiipublicschools.org
  - (808) 453-6430
- Pearl City Highlands School
  - 1419 Waimanalo Home Rd Pearl City
  - hawaiipublicschools.org
  - (808) 453-6470
- Kanoelani Elementary School (PK, K-6)
  - 94-1091 Oli LP Waipahu
  - hawaiipublicschools.org
  - (808) 675-0195
- Pearl City Elementary School (PK, K-6)
  - 1090 Waimano Home Rd Pearl City
  - hawaiipublicschools.org
  - (808) 453-6455
- Highlands Intermediate School (7-8)
  - 1460 Hoolaulea St Pearl City
  - hawaiipublicschools.org
  - (808) 453-6480
- Pearl City High School (9-12)
  - 2100 Hookiekie St. Pearl City
  - hawaiipublicschools.org
  - (808) 453-6500
- Waiau Elementary School (PK, K-6)
  - 98-450 Hookanike St Pearl City
  - hawaiipublicschools.org
  - (808) 453-6530
- Kapolei Elementary School (PK, K-5)
  - 91-1119 Kamaaha LP Kapolei
  - hawaiipublicschools.org
  - (808) 693-7000



# LEEWARD DISTRICT

- Waipahu High School (9-12)
  - 94-1211 Farrington Hwy Waipahu
  - hawaiipublicschools.org
  - (808) 675-0222
- Hookele Elementary School (PK, K-5)
  - 91-511 Kunehi St Kapolei
  - (808) 675-0222
- Lehua Elementary School (PK, K-6)
  - 791 Lehua Ave Pearl City
  - hawaiipublicschools.org
  - (808) 453-6490
- Kapolei High School (9-12)
  - 91-5007 Kapolei Pkwy Kapolei
  - hawaiipublicschools.org
  - (808) 692-8200
- Holomua Elementary School (PK, K-6)
  - 91-1561 Keaunui Dr. Ewa Beach
  - hawaiipublicschools.org
  - (808) 685-2000
- Kapolei Middle School (6-8)
  - 91-5335 Kapolei Pkwy Kapolei
  - hawaiipublicschools.org
  - (808) 693-7025
- Keone'ula Elementary School (PK, K-6)
  - 91-970 Kaileolea Dr. Ewa Beach
  - hawaiipublicschools.org
  - (808) 689-1380
- Ewa Makai Middle School (PK, K-6)
  - 91-6291 Kapolei Pkwy Ewa Beach
  - hawaiipublicschools.org
  - (808) 687-9500
- Mauka Lani Elementary School (PK, K-5)
  - 92-1300 Panana St. Kapolei
  - hawaiipublicschools.org
  - (808) 672-1100
- Hawaii Technology Academy Public Charter School (K-12)
  - 94-450 Mokuola St. Waipahu
  - myhta.org
  - (808) 676-5444
- Pohakea Elementary School (PK, K-6)
  - 91-750 Fort Weaver Rd Ewa Beach
  - hawaiipublicschools.org
  - (808) 689-1290



# CENTRAL DISTRICT

- Mililani High School (9-12)
  - 95-1200 Meheula Pkw Mililani
  - mililanihs.org
  - (808) 627-7747
- Mililani Ike Elementary School (PK, K-5)
  - 95-1330 Lehiwa Dr Mililani
  - hawaiipublicschools.org
  - (808) 626-2980
- Mililani Mauka Elementary School (PK, K-5)
  - 95-1111 Makaikai St Mililani
  - hawaiipublicschools.org
  - (808) 626-3350
- Maj. Sheldon Wheeler Middle School (6-8)
  - 2 Wheeler Army Airfield Wahiawa
  - universitylaboratoryschool.org
  - (808) 622-6525
- Iliahi Elementary School (PK, K-5)
  - 2035 California Ave Wahiawa
  - hawaiipublicschools.org
  - (808) 622-6411
- Moanalua Middle School (7-8)
  - 1289 Mahiole St Honolulu
  - hawaiipublicschools.org
  - (808) 831-7850
- Aiea Intermediate School (7-8)
  - 99-600 Kulawea St Aiea
  - hawaiipublicschools.org
  - (808) 483-7230
- Waialua Elementary School (PK, K-6)
  - 67-020 Waialua Beach Rd Waialua
  - hawaiipublicschools.org
  - (808) 637-8228
- Haleiwa Elementary School (PK,K-6)
  - 99-600 Kulawea St Aiea
  - hawaiipublicschools.org
  - (808) 483-7230
- Mililani Uka Elementary School (PK, K-5)
  - 94-380 Kuahelani Ave Mililani
  - hawaiipublicschools.org
  - (808) 627-7303



# CENTRAL DISTRICT

- Waialua High & Intermediate School (7-12)
  - 67-160 Farrington Hwy Waialua
  - hawaiipublicschools.org
  - (808) 637-8200
- Adm. Chester W. Nimitz Elementary School (PK, K-6)
  - 520 Main St Honolulu
  - hawaiipublicschools.org
  - (808) 421-4165
- Mililani Middle School (6-8)
  - 95-1140 Lehiwa Dr Mililani
  - hawaiipublicschools.org
  - (808) 626-7355
- Maj. Gen. William R. Shafter Elementary School (PK, K-6)
  - 2 Fort Shafter Honolulu
  - hawaiipublicschools.org
  - (808) 832-3560
- Mililani Waena Elementary School (PK, K-5)
  - 95-502 Kipapa Dr Mililani
  - hawaiipublicschools.org
  - (808) 627-7300
- Leilehua High School (9-12)
  - 1515 California Ave Wahiawa
  - hawaiipublicschools.org
  - (808) 622-6550
- Adm. Arthur W. Radford High School (9-12)
  - 4361 Salt Lake Blvd Honolulu
  - hawaiipublicschools.org
  - (808) 421-4200
- Pearl Ridge Elementary School (PK, K-6)
  - 98-940 Moanalua Rd Aiea
  - hawaiipublicschools.org
  - (808) 483-7250
- Helemano Elementary School (PK, K-5)
  - 1001 Ihi Ihi Ave Wahiawa
  - hawaiipublicschools.org
  - (808) 622-6336
- Aliamanu Elementary School (PK, K-6)
  - 1515 California Ave Wahiawa
  - hawaiipublicschools.org
  - (808) 421-4280

# CENTRAL DISTRICT

- Mililani High School (9-12)
  - 95-1200 Meheula Pkwy Mililani
  - mililanihs.org
  - (808) 627-7747
- Aliamanu Middle School (7-8)
  - 3271 Salt Lake Blvd Honolulu
  - hawaiipublicschools.org
  - (808) 421-4100
- Moanalua Elementary School (PK, K-5)
  - 1337 Mahiole St Honolulu
  - hawaiipublicschools.org
  - (808) 831-7878
- Gustav H. Webling Elementary School (PK, K-6)
  - 99-370 Paihi St Aiea
  - hawaiipublicschools.org
  - (808) 483-7240
- Salt Lake Elementary School (PK, K-6)
  - 1131 Ala Lilikoi St Honolulu
  - hawaiipublicschools.org
  - (808) 831-7870
- Makalapa Elementary School (PK, K-6)
  - 4435 Salt Lake Blvd Honolulu
  - hawaiipublicschools.org
  - (808) 421-4110
- Pearl Harbor Kai Elementary School (PK, K-6)
  - 1 C Ave Honolulu
  - hawaiipublicschools.org
  - (808) 421-4245
- Maj. Sheldon Wheeler Elementary School (PK, K-5)
  - 1 Wheeler Army Airfield Wahiawa
  - hawaiipublicschools.org
  - (808) 622-6400
- Kipapa Elementary School (PK, K-5)
  - 95-076 Kipapa Dr Mililani
  - hawaiipublicschools.org
  - (808) 627-7322
- Aiea High School (9-12)
  - 98-1276 Ulune St. Aiea
  - hawaiipublicschools.org
  - (808) 483-7300

# CENTRAL DISTRICT

- Daniel K. Inouye Elementary School (PK, K-5)
  - Waianae & Ayres Ave Wahiawa
  - hawaiipublicschools.org
  - (808) 622-6380
- Wahiawa Elementary School (PK, K-5)
  - 1402 Glen Ave Wahiawa
  - hawaiipublicschools.org
  - (808) 622-6393
- Waimalu Elementary School (PK, K-6)
  - 98-825 Moanalua Rd Aiea
  - hawaiipublicschools.org
  - (808) 483-7210
- Aiea Intermediate School (7-8)
  - 99-600 Kulawea St. Aiea
  - hawaiipublicschools.org
  - (808) 483-7230
- Sgt. Samuel K. Solomon Elementary School (PK, K-5)
  - 1 Schofield Barracks, Wahiawa
  - hawaiipublicschools.org
  - (808) 624-9500
- Gustav H. Webling Elementary School (PK, K-6)
  - 99-370 Paihi St. Aiea
  - hawaiipublicschools.org
  - (808) 483-7240
- Ka'ala Elementary School (PK, K-5)
  - 130 California Ave. Wahiawa
  - hawaiipublicschools.org
  - (808) 622-6366
- Aiea Elementary School (PK, K-6)
  - 99-370 Moanalua Rd. Aiea
  - hawaiipublicschools.org
  - (808) 483-7200
- Red Hill Elementary School (PK, K-6)
  - 1265 Ala Kula Pl Honolulu
  - hawaiipublicschools.org
  - (808) 831-7866
- Alvah A. Scott Elementary School
  - 98-1230 Moanalua Rd Aiea
  - hawaiipublicschools.org
  - (808) 483-7220



# HONOLULU DISTRICT

- University Laboratory School (K-12)
  - 1776 University Ave, Honolulu
  - [universitylaboratoryschool.org](http://universitylaboratoryschool.org)
  - (808) 956-7833
- Moanalua High School (9-12)
  - 2825 Ala Ilima St. Honolulu
  - [moanaluahs.org](http://moanaluahs.org)
  - (808) 837-8455
- Kalani High School (9-12)
  - 4680 Kalanianaʻole Hwy, Honolulu
  - [kalanihighschool.org](http://kalanihighschool.org)
  - (808) 377-7744
- President Theodore Roosevelt High School (9-12)
  - 1120 Nehoa St. Honolulu
  - [hawaiipublicschools.org](http://hawaiipublicschools.org)
  - (808) 587-4600
- Waikiki Elementary School (PK, K-5)
  - 3710 Leahi Ave, Honolulu
  - [waikikischool.org](http://waikikischool.org)
  - (808) 971-6900
- Noelani Elementary School (PK, K-5)
  - 2655 Woodlawn Dr Honolulu
  - [hawaiipublicschools.org](http://hawaiipublicschools.org)
  - (808) 988-1858
- Pauoa Elementary School (PK, K-5)
  - 2301 Pauoa Rd Honolulu
  - [hawaiipublicschools.org](http://hawaiipublicschools.org)
  - (808) 587-4500
- Henry J. Kaiser High School (9-12)
  - 511 Lunalilo Home Rd Honolulu
  - [kaiserhighschoolhawaii.org](http://kaiserhighschoolhawaii.org)
  - (808) 394-1200
- Manoa Elementary School (PK, K-5)
  - 3155 Manoa Rd Honolulu
  - [hawaiipublicschools.org](http://hawaiipublicschools.org)
  - (808) 988-1868
- Pauoa Elementary School (PK, K-5)
  - 2301 Pauoa Rd Honolulu
  - [hawaiipublicschools.org](http://hawaiipublicschools.org)
  - (808) 587-4500

# HONOLULU DISTRICT

- King Liholiho Elementary School (PK, K-5)
  - 3430 Maunaloa Ave Honolulu
  - hawaiipublicschools.org
  - (808) 733-4850
- Mayor John H. Wilson Elementary School (PK, K-5)
  - 4945 Kilauea Ave Honolulu
  - wilsonschoolhawaii.org
  - (808) 733-4740
- Ma'ema'e Elementary School (PK, K-6)
  - 319 Wyllie St. Honolulu
  - hawaiipublicschools.org
  - (808) 595-5400
- Nuuanu Elementary School (PK, K-5)
  - 3055 Puiwa Ln Honolulu
  - nuuanu.k12.hi.us
  - (808) 595-5422
- Hukulani Elementary School (K-5)
  - 2940 Kamakini St Honolulu
  - hukulani-elementary.com
  - (808) 733-4789
- Kaimuki Middle School (6-8)
  - 631 18th Ave Honolulu
  - hawaiipublicschools.org
  - (808) 733-4800
- Niu Valley Middle School (6-8)
  - 310 Halemaumau St. Honolulu
  - niuvalleymiddle.org
  - (808) 377-2440
- Kahala Elementary School (PK, K-5)
  - 4559 Kilauea Ave Honolulu
  - hawaiipublicschools.org
  - (808) 733-8455
- Koko Head Elementary School (PK, K-5)
  - 189 Lunalilo Home Rd Honolulu
  - hawaiipublicschools.org
  - (808) 397-5811
- Hahaione Elementary School (PK, K-5)
  - 595 Pepeekeo St Honolulu
  - hawaiipublicschools.org
  - (808) 397-5822

# HONOLULU DISTRICT

- Aliʻiolani Elementary School (PK, K-5)
  - 1240 7th Ave Honolulu
  - hawaiipublicschools.org
  - (808) 733-4750
- Aina Haina Elementary School (PK, K-5)
  - 801 W Hind Dr Honolulu
  - hawaiipublicschools.org
  - (808) 377-2419
- Kalihi Uka Elementary School (PK, K-5)
  - 2411 Kalihi St Honolulu
  - hawaiipublicschools.org
  - (808) 832-3310
- President Abraham Lincoln Elementary School (PK, K-5)
  - 615 Auwaiolimu St Honolulu
  - hawaiipublicschools.org
  - (808) 587-4480
- President William McKinley High School (9-12)
  - 1039 South King St Honolulu
  - hawaiipublicschools.org
  - (808) 594-0400
- Robert Louis Stevenson Middle School (6-8)
  - 1202 Prospect St Honolulu
  - hawaiipublicschools.org
  - (808) 587-4520
- William P. Jarrett Middle School (6-8)
  - 1903 Palolo Ave Honolulu
  - hawaiipublicschools.org
  - (808) 733-4888
- President Thomas Jefferson Elementary School (PK, K-5)
  - 324 Kapahulu Ave. Honolulu
  - hawaiipublicschools.org
  - (808) 971-6922
- King David Kalakaua Middle School (6-8)
  - 821 Kalihi St. Honolulu
  - hawaiipublicschools.org
  - (808) 832-3130
- Hickam Elementary School (PK, K-6)
  - Manzelman Cir Honolulu
  - hawaiipublicschools.org
  - (808) 421-4148

# HONOLULU DISTRICT

- Kamiloiki Elementary School (PK, K-5)
  - 7788 Hawaii Kai Dr Honolulu
  - hawaiipublicschools.org
  - (808) 397-5800
- Voyager Public Charter School (K-8)
  - 3265 Salt Lake Blvd Honolulu
  - voyagerschool.com
  - (808) 521-9770
  -
- Prince David Kawanānākoa Middle School (6-8)
  - 49 Funchal St. Honolulu
  - hawaiipublicschools.org
  - (808) 587-4430
- Myron B. Thompson Academy Public Charter School (K-12)
  - 1040A Richards St. Honolulu
  - ethompson.org
  - (808) 441-8000
- SEEQS: the School for Examining Essential Questions of Sustainability (6-8)
  - 2705 Kalakaua Ave Honolulu
  - seeqs.org
  - (808) 677-3377
- Ka'ewai Elementary School
  - 1929 Kamehameha IV Rd Honolulu
  - kaewaielementary.org
  - (808) 832-3500
- Gov. Sanford B. Dole Middle School
  - 1803 Kam IV Rd Honolulu
  - hawaiipublicschools.org
  - (808) 832-3340
- Linapuni Elementary School
  - 1434 Linapuni St. Honolulu
  - hawaiipublicschools.org
  - (808) 832-3303
- Kapalama Elementary School
  - 1601 North School St. Honolulu
  - hawaiipublicschools.org
  - (808) 832-3290
-



# OAHU PRIVATE SCHOOLS

SCHOOL Street Address   City, Zip Website	Grades/ Gender	Religious Affiliation, if any Phone Number Email Address	No. Students/ No. Full-Time Faculty (2019–2020)	Tuition % Students Receiving Tuition Assistance (2020–2021)	Accre- ditation	Licensing Status
<b>O'ahu</b>						
<b>ADVENTIST MALAMA ELEMENTARY SCHOOL</b> 86-072 Farrington Highway   Wai'anae 96792 adventistmalama.org	K–8 COED	Seventh-Day Adventist 696-3988 office@adventistmalama.org	53/3	\$5,700 35%	NADCA; NCPA	Licensed
<b>AMERICAN RENAISSANCE ACADEMY</b> 91-1180 Midway St.   Kapolei 96707 arahawaii.org	K–12 COED	Independent 682-7337 admissions@arahawaii.org	95/12	\$15,000– \$16,200 35%	HAIS; WASC	Licensed
<b>ASIA PACIFIC INTERNATIONAL SCHOOL—HAWAII'I CAMPUS</b> 54-230 Kamehameha Highway   Hau'ula 96717 apishawaii.org	PK–12 COED	Christian 670-1909 admissions@apishawaii.org	156/16	\$16,200– \$20,200 50%	HAIS; WASC	Licensed
<b>ASSETS SCHOOL</b> 1 'Ohana Nui Way   Honolulu 96818 assets-school.org	K–12 COED	Independent 423-1356 info@assets-school.org	339/55	\$25,025– \$26,492 34%	HAIS; WASC	Licensed
<b>CALVARY CHAPEL CHRISTIAN SCHOOL</b> 98-1016 Komo Mai Drive   'Aiea 96701 cccs@honolulu.org	K–12 COED	Christian 524-0846 cccs@hawaii.rr.com	172/13	\$6,300– \$7,455	WASC	Licensed
<b>CENTRAL UNION CHURCH PRESCHOOL &amp; KINDERGARTEN</b> 1660 S. Beretania St.   Honolulu 96826 centralunionpreschool.org	Toddler–K COED	Congregational 946-4025 ext. 3070 vbraithwaite@centralunionpreschool.org	179/25	\$16,271– \$18,776 13.8%	NAEYC	Compliant
<b>THE CHILDREN'S HOUSE</b> 1840 Komo Mai Drive   Pearl City 96782 childrenshousehawaii.org	PK–6 COED	Nondenominational 455-4131 admissions@childrenshousehawaii.org	330/37	\$11,690– \$13,350 33%	HAIS; WASC	Licensed
<b>CHRISTIAN ACADEMY</b> 3400 Moanalua Road   Honolulu 96819 capatriots.org	P3–12 COED	Assembly of God 836-0233 lei.hatcher@capatriots.org	251/28	\$9,040– \$10,310 17%	ACSI; WASC	Licensed
<b>DAMIEN MEMORIAL SCHOOL</b> 1401 Houghtailing St.   Honolulu 96817 damien.edu	6–12 COED	Roman Catholic 440-9527 limos@damien.edu	695/60	\$10,390– \$14,306 68%	HAIS; WASC; WCEA	Licensed
<b>FRIENDSHIP CHRISTIAN SCHOOLS</b> 91-1130 Renton Road   'Ewa 96706 fbcewa.org	PK–12 COED	Baptist 681-8838 friendship@fchawaii.org	296/24	\$5,007 1%		Licensed
<b>HANAHAU'OLI SCHOOL</b> 1922 Makiki St.   Honolulu 96822 hanahauoli.org	PK–6 COED	Independent 949-6461 ext. 638 bcrum@hanahauoli.org	210/22	\$23,340 22%	HAIS; WASC	Licensed
<b>HANALANI SCHOOLS</b> 94-294 Anania Drive   Mililani 96789 hanalani.org	PK–12 COED	Nondenominational 625-0737 ext. 456 admissions@hanalani.org	606/52	\$12,655– \$15,000 29%	HAIS; WASC	Licensed
<b>HAWAII'I BAPTIST ACADEMY</b> 21 Bates St.   Honolulu 96817 hba.net	K–12 COED	Baptist 595-5000 admissions@hba.net	1,032/81	\$17,950 22%	HAIS; WASC	Licensed
<b>HAWAIIAN MISSION ACADEMY KA LAMA IKI</b> 1415 Makiki St.   Honolulu 96814 kalamaiki.org	K–8 COED	Seventh-Day Adventist 949-2033 secretary@kalamaiki.org	115/6	\$8,800 50%	NADCA	Licensed
<b>HAWAIIAN MISSION ACADEMY— 9 TO 12 CAMPUS</b> 1438 Pensacola St.   Honolulu 96822 hawaiianmissionacademy.org	9–12 COED	Seventh-Day Adventist 536-2207 principal@hawaiianmissionacademy.org	96/8	\$14,019 70%	NADCA; WASC	Licensed
<b>HAWAIIAN MISSION ACADEMY— WINDWARD CAMPUS</b> 160 Mo'okua St.   Kailua 96734 hmawindward.org	K–8 COED	Seventh-Day Adventist 261-0565 office@hmawindward.org	63/4	\$5,425– \$7,750 40%	NADCA	Licensed
<b>HO'ĀLA SCHOOL</b> 1067-A California Ave.   Wahiawā 96786 hoalaschool.org	K–8 COED	Independent 621-1898 darlene@hoalaschool.org	39/5	\$10,857– \$11,161 70%	HAIS; WASC	Licensed

# OAHU PRIVATE SCHOOLS

SCHOOL Street Address   City, Zip Website	Grades/ Gender	Religious Affiliation, if any Phone Number Email Address	No. Students/ No. Full-Time Faculty (2019–2020)	Tuition % Students Receiving Tuition Assistance (2020–2021)	Accre- ditation	Licensing Status
<b>HOLY FAMILY CATHOLIC ACADEMY</b> 830 Main St.   Honolulu 96818 <a href="http://hfcathawaii.org">hfcathawaii.org</a>	PK–8 COED	Roman Catholic 423-9611 <a href="mailto:cakiu@hfcathawaii.org">cakiu@hfcathawaii.org</a>	367/25	\$8,045– \$9,985 10%	WASC; WCEA	Compliant
<b>HOLY NATIVITY SCHOOL</b> 5286 Kalanianaʻole Highway   Honolulu 96821 <a href="http://holynativityschool.org">holynativityschool.org</a>	Early Child- hood–8 COED	Episcopal 373-3232 <a href="mailto:admissions@holynativityschool.org">admissions@holynativityschool.org</a>	128/20	\$16,800– 17,210 15%	HAIS; WASC	Licensed
<b>HONGWANJI MISSION SCHOOL</b> 1728 Pali Highway   Honolulu 96813 <a href="http://hongwanjimissionschool.com">hongwanjimissionschool.com</a>	PK–8 COED	Buddhist 532-0522 <a href="mailto:david.randall@hongwanji.us">david.randall@hongwanji.us</a>	385/37	\$11,625 5%	HAIS; WASC	Licensed
<b>HONOLULU WALDORF SCHOOL</b> 350 Ulua St.   Honolulu 96821 <a href="http://honoluluwaldorf.org">honoluluwaldorf.org</a>	PK–8 COED	Nondenominational 377-5491 <a href="mailto:admissions@honoluluwaldorf.org">admissions@honoluluwaldorf.org</a>	173/18	\$6,500– \$17,500 34%	AWSNA; HAIS; WASC	Licensed
<b>HUAKAILANI SCHOOL FOR GIRLS</b> 45-035 Kāneʻohe Bay Drive   Kāneʻohe 96744 <a href="http://huakailani.org">huakailani.org</a>	K–8 GIRLS	Independent 263-2020 <a href="mailto:huakailani@gmail.com">huakailani@gmail.com</a>	30/4	\$11,800 10%		Licensed
<b>ʻIOLANI SCHOOL</b> 563 Kamoku St.   Honolulu 96826 <a href="http://iolani.org">iolani.org</a>	K–12 COED	Episcopal 943-2222 <a href="mailto:admission@iolani.org">admission@iolani.org</a>	2,020/198	\$25,325 24%	HAIS; WASC	Licensed
<b>ISLAND PACIFIC ACADEMY</b> 909 Haumea St.   Kapolei 96707 <a href="http://islandpacificacademy.org">islandpacificacademy.org</a>	K–12 COED	Nondenominational 674-3563 <a href="mailto:admission@ipahawaii.org">admission@ipahawaii.org</a>	540/60	\$15,864– \$16,800 20%	HAIS; WASC	Licensed
<b>KAIMUKĪ CHRISTIAN SCHOOL</b> 1117 Koko Head Ave.   Honolulu 96816 <a href="http://kaimukichristianschool.org">kaimukichristianschool.org</a>	P2–12 COED	Christian 732-1781 ext. 250 <a href="mailto:ktakata@kaimukichristian.org">ktakata@kaimukichristian.org</a>	282/34	\$14,300– \$16,730 12%	ACSI; WASC	Licensed
<b>KAMEHAMEHA SCHOOLS KAPĀLAMA</b> 1887 Makuakāne St.   Honolulu 96817 <a href="http://ksbe.edu">ksbe.edu</a>	K–12 COED	Protestant 842-8800 <a href="mailto:admissions@ksbe.edu">admissions@ksbe.edu</a>	3,192/312	\$4,898– \$6,026 75%	HAIS; WASC	Licensed
<b>KAWAIAHAʻO CHURCH SCHOOL</b> 872 Mission Lane   Honolulu 96813 <a href="http://kawaiahaoschool.org">kawaiahaoschool.org</a>	Early Child- hood–6 COED	Protestant 585-0622 <a href="mailto:admissions@kawaiahaoschool.org">admissions@kawaiahaoschool.org</a>	108/15	\$8,820– \$14,190 10%	HAIS; WASC	Licensed
<b>KOʻOLAU BAPTIST ACADEMY</b> 45-633 Keneke St.   Kāneʻohe 96744 <a href="http://academy.koolaubc.org">academy.koolaubc.org</a>	K–12 COED	Baptist 233-2900 <a href="mailto:info@koolaubc.org">info@koolaubc.org</a>	145/15	\$5,100	AACS; NACSAA; NCPSA; MSA-CESS	Licensed
<b>LA PIETRA – HAWAIIʻI SCHOOL FOR GIRLS</b> 2933 Poni Moi Road   Honolulu 96815 <a href="http://lapietra.edu">lapietra.edu</a>	6–12 GIRLS	Independent 922-2744 ext. 106 <a href="mailto:mmeyer@lapietra.edu">mmeyer@lapietra.edu</a>	155/21	\$20,400 45%	HAIS; WASC	Licensed
<b>LANAKILA BAPTIST SCHOOLS</b> 94-1250 Waipahu St.   Waipahu 96797 <a href="http://lbswarriors.com">lbswarriors.com</a>	PK–12 COED	Baptist 677-0731 <a href="mailto:amy.buttler@lbswarriors.org">amy.buttler@lbswarriors.org</a>	139/16	\$7,800– \$8,300 4%		Licensed
<b>LE JARDIN ACADEMY</b> 917 Kalanianaʻole Highway   Kailua 96734 <a href="http://lejardinacademy.org">lejardinacademy.org</a>	PK–12 COED	Nondenominational 261-0707 ext. 1310 <a href="mailto:jennifer.souza@lejardinacademy.org">jennifer.souza@lejardinacademy.org</a>	792/80	\$13,293– \$23,480 20%	HAIS; WASC; IB	Licensed
<b>MĀʻILI BIBLE SCHOOL</b> 87-138 Gilipake St.   Waiʻanae 96792 <a href="http://mailibible.org">mailibible.org</a>	K–12 COED	Nondenominational 696-3038 <a href="mailto:info@mailibiblechurch.org">info@mailibiblechurch.org</a>	58/5	\$4,300– \$5,200 3%		Licensed
<b>MARY, STAR OF THE SEA EARLY LEARNING CENTER</b> 4470 Aliʻihoa St., #100   Honolulu 96821 <a href="http://staroftheseaelc.org">staroftheseaelc.org</a>	Early Child- hood–K COED	Roman Catholic 734-3840 <a href="mailto:lfoster@staroftheseaelc.org">lfoster@staroftheseaelc.org</a>	207/25	\$10,000 10%	NAEYC; WCEA	Compliant
<b>MARY, STAR OF THE SEA SCHOOL</b> 4469 Malia St.   Honolulu 96821 <a href="http://starofthesea.org">starofthesea.org</a>	K–8 COED	Roman Catholic 734-0208 <a href="mailto:mrufu@starofthesea.org">mrufu@starofthesea.org</a>	155/20	\$11,800 15%	WASC; WCEA	Compliant



# OAHU PRIVATE SCHOOLS

SCHOOL Street Address   City, Zip Website	Grades/ Gender	Religious Affiliation, if any Phone Number Email Address	No. Students/ No. Full-Time Faculty (2019–2020)	Tuition % Students Receiving Tuition Assistance (2020–2021)	Accre- ditation	Licensing Status
<b>O‘ahu</b> (continued)						
<b>MARYKNOLL SCHOOL</b> 1526 Alexander St.   Honolulu 96822 <a href="http://maryknollschool.org">maryknollschool.org</a>	K-12 COED	Roman Catholic 952-7330 <a href="mailto:lori.carlos@maryknollschool.org">lori.carlos@maryknollschool.org</a>	1,059/76	\$19,200 35%	HAIS; WASC; WCEA	Licensed
<b>MID-PACIFIC INSTITUTE</b> 2445 Ka‘ala St.   Honolulu 96822 <a href="http://midpac.edu">midpac.edu</a>	PK-12 COED	Independent 973-5005 <a href="mailto:admissions@midpac.edu">admissions@midpac.edu</a>	1,530/145	\$26,840 29%	HAIS; WASC	Licensed
<b>MONTESSORI COMMUNITY SCHOOL</b> 1239 Nehoa St.   Honolulu 96822 <a href="http://montessorihawaii.org">montessorihawaii.org</a>	2-year- olds and PK-6 COED	Independent 522-0244 <a href="mailto:admissions@montessorihawaii.org">admissions@montessorihawaii.org</a>	198/15	\$13,716– \$14,796 14.5%	AMS; HAIS	Licensed
<b>NAVY HALE KEIKI SCHOOL</b> 153 Bougainville Drive   Honolulu 96818 <a href="http://nhks.org">nhks.org</a>	PK-5 COED	423-1727 ext. 220 <a href="mailto:monique.raduziner@nhks.org">monique.raduziner@nhks.org</a>	218/11	\$7,475– \$9,950 5%	HAIS; WASC	Licensed
<b>NEW HOPE CHRISTIAN SCHOOL</b> 94-050 Farrington Highway, Suite C-2 Waipahu 96797 <a href="http://nhcshi.org">nhcshi.org</a>	Early Child- hood-7 COED	Christian 678-3469 <a href="mailto:mrs.cenos@nhcshi.org">mrs.cenos@nhcshi.org</a>	189/13	\$7,210 37%	ACSI	Licensed
<b>OUR LADY OF GOOD COUNSEL SCHOOL</b> 1530 Ho‘olana St.   Pearl City 96782 <a href="http://olgchawaii.org">olgchawaii.org</a>	PK-8 COED	Roman Catholic 455-4533 <a href="mailto:cluarca@olgchawaii.org">cluarca@olgchawaii.org</a>	167/22	\$7,700– \$8,290 49%	WASC; WCEA	Compliant
<b>OUR LADY OF PERPETUAL HELP SCHOOL</b> 91-1010 North Road   Ewa Beach 96706 <a href="http://olphschoolewabeachhi.com">olphschoolewabeachhi.com</a>	K-8 COED	Roman Catholic 689-0474 <a href="mailto:info@olphschoolewabeachhi.com">info@olphschoolewabeachhi.com</a>	114/12	\$6,900– \$7,100 16%	WASC; WCEA	Compliant
<b>OUR SAVIOR LUTHERAN SCHOOL</b> 98-1098 Moanalua Road   ‘Aiea 96701 <a href="http://oursaviorlutheranschool.org">oursaviorlutheranschool.org</a>	PK-8 COED	Lutheran 488-0000 ext. 224 <a href="mailto:office@osls-hawaii.org">office@osls-hawaii.org</a>	133/11	\$7,780– \$9,150 30%	HAIS; NLSA; WASC	Licensed
<b>PACIFIC BUDDHIST ACADEMY</b> 1754 Lusitana St.   Honolulu 96813 <a href="http://pacificbuddhistacademy.org">pacificbuddhistacademy.org</a>	9-12 COED	Buddhist 532-2649 <a href="mailto:blanche.yarnell@pbahi.org">blanche.yarnell@pbahi.org</a>	75/8	\$17,250 35%	HAIS; WASC	Licensed
<b>PEARL HARBOR CHRISTIAN ACADEMY</b> 94-1044 Waipi‘o Uka St.   Waipahu 96797 <a href="http://pearlharborchristianacademy.com">pearlharborchristianacademy.com</a>	PK-8 COED	Christian 678-3997 ext. 104 <a href="mailto:phca@hawaii.rr.com">phca@hawaii.rr.com</a>	186/15	\$7,135– \$7,295 15%	ACSI; WASC	Licensed
<b>PLAYMATE KINDERGARTEN, DAY CARE CENTER &amp; GRADE SCHOOL LTD.</b> 1704 Ke‘eaumoku St.   Honolulu 96822	PK-3 COED	Independent 536-6442 <a href="mailto:fattymoko@gmail.com">fattymoko@gmail.com</a>	14/3	\$800– \$950/mo. 7%		Licensed
<b>PUNAHOU SCHOOL</b> 1601 Punahou St.   Honolulu 96822 <a href="http://punahou.edu">punahou.edu</a>	K-12 COED	Nondenominational 944-5714 <a href="mailto:bhata@punahou.edu">bhata@punahou.edu</a>	3,735/343	\$26,975 20%	HAIS; WASC	Licensed
<b>SACRED HEARTS ACADEMY</b> 3253 Wai‘alae Ave.   Honolulu 96816 <a href="http://sacredhearts.org">sacredhearts.org</a>	PK-12 GIRLS	Roman Catholic 734-5058 ext. 333 <a href="mailto:info@sacredhearts.org">info@sacredhearts.org</a>	710/57	\$12,752– \$17,311 54%	HAIS; WASC; WCEA	Licensed
<b>ST. ANDREW’S SCHOOLS —THE PRIORY, THE PREP, QUEEN EMMA PRESCHOOL</b> 24 Queen Emma Square   Honolulu 96813 and 3019 Pali Highway   Honolulu 96817 <a href="http://standrewsschools.org">standrewsschools.org</a>	K-12 GIRLS K-6 BOYS PK COED	Episcopal 532-2417 <a href="mailto:sjones@standrewsschools.org">sjones@standrewsschools.org</a>	445/80	\$12,660– \$18,995 40%	HAIS; NAEYC; WASC	Licensed
<b>ST. ANN SCHOOL</b> 46-125 Ha‘ikū Road   Kāne‘ohe 96744 <a href="http://saintannhawaii.org">saintannhawaii.org</a>	PK-8 COED	Roman Catholic 247-3092 ext. 102 <a href="mailto:mbrown@saintannhawaii.org">mbrown@saintannhawaii.org</a>	165/11	\$9,300 49%	WASC; WCEA	Compliant
<b>ST. ANTHONY SCHOOL KAILUA</b> 148 Makawao St.   Kailua 96734 <a href="http://saskailua.org">saskailua.org</a>	PK-8 COED	Roman Catholic 261-3331 <a href="mailto:bolsen@saskailua.org">bolsen@saskailua.org</a>	269/26	\$8,193– \$9,978 10%	WASC; WCEA	Compliant

# OAHU PRIVATE SCHOOLS

SCHOOL Street Address   City, Zip Website	Grades/ Gender	Religious Affiliation, if any Phone Number Email Address	No. Students/ No. Full-Time Faculty (2019–2020)	Tuition % Students Receiving Tuition Assistance (2020–2021)	Accre- ditation	Licensing Status
<b>ST. CLEMENT'S SCHOOL</b> 1515 Wilder Ave.   Honolulu 96822 stclem.com	PK–K COED	Episcopal 949-2082 admin@stclem.com	127/18	\$12,402 15%	NAEYC	Licensed
<b>ST. ELIZABETH SCHOOL</b> 99-310 Moanalua Road   'Aiea 96701 steliz-hi.org	PK–8 COED	Roman Catholic 488-5322 bsindol@steliz-hi.org	141/14	\$7,500 15%	WASC; WCEA	Compliant
<b>ST. JOHN VIANNEY SCHOOL</b> 940 Keolu Drive   Kailua 96734 sjvkailua.org	PK–8 COED	Roman Catholic 261-4651 cdemello@sjvkailua.org	154/13	\$8,230– \$8,530 48%	WASC; WCEA	Compliant
<b>ST. JOSEPH PARISH SCHOOL</b> 94-651 Farrington Highway   Waipahu, 96797 stjosephwaipahu.org	PK–8 COED	Roman Catholic 677-4475 bsandobal@stjosephwaipahu.org	282/36	\$8,275– \$8,988 20%	WASC; WCEA	Compliant
<b>SAINT LOUIS SCHOOL</b> 3142 Wai'ālae Ave.   Honolulu 96816 saintlouis-hawaii.org	K–12 BOYS	Roman Catholic 739-7777 admissions@saintlouis-hawaii.org	883/61	\$13,700– \$17,500 59%	HAIS; WASC; WCEA	Licensed
<b>SAINT MARK LUTHERAN SCHOOL</b> 45-725 Kamehameha Highway   Kāne'ohe 96744 smls-hawaii.org	PK3–8 COED	Lutheran 247-5589 melelani@smls-hawaii.org	215/15	\$9,470– \$10,049 46%	HAIS; NLSA; WASC	Licensed
<b>ST. MICHAEL SCHOOL</b> 67-340 Haona St.   Waiāluā 96791 stmichaelschoolhi.com	PK–8 COED	Roman Catholic 637-7772 kfukumoto@stmichaelschoolhi.com	93/9	\$7,500– \$8,000 23%	WASC; WCEA	Compliant
<b>ST. PATRICK SCHOOL</b> 3320 Harding Ave.   Honolulu 96816 saintpatrick-hawaii.org	PK–8 COED	Roman Catholic 734-8979 adecosta@saintpatrick-hawaii.org	324/45	\$7,500– \$7,650 36%	WASC; WCEA	Compliant
<b>ST. PHILOMENA EARLY LEARNING CENTER</b> 3300 Ala Laulani St.   Honolulu 96818 stphilomenaeearlylearningcenter.com	Early Child- hood–K COED	Roman Catholic 833-8080 director@spelc-hawaii.com	178/10	\$12,720– \$13,380 57%	NAEYC	Compliant
<b>SAINT THERESA SCHOOL</b> 712 N. School St.   Honolulu 96817 sts-hi.org	PK–8 COED	Roman Catholic 536-4703 cgora@rcchawaii.org	232/22	\$7,600– \$8,900 5%	WASC; WCEA	Compliant
<b>SOTO ACADEMY</b> 1708 Nu'uanu Ave.   Honolulu 96817 sotoacademy.org	K–6 COED	Nondenominational 533-0452 info@sotoacademy.org	50/7	\$11,900 1%		Licensed
<b>TRINITY CHRISTIAN SCHOOL</b> 875 Aulua Road and 1110 Kailua Road   Kailua 96734 tcskailua.net	PK–12 COED	Presbyterian 262-8501 lkawakami@tcskailua.net	311/30	\$11,890– \$15,390 23%	HAIS; WASC	Licensed
<b>TRINITY LUTHERAN SCHOOL</b> 1611 California Ave.   Wahiawā 96786 tls-hawaii.org	PK–8 COED	Lutheran 621-6033 office@tls-hawaii.org	120/10	\$3,900– \$8,700 50%	NLSA; WASC	Licensed
<b>VARIETY SCHOOL OF HAWAI'I</b> 710 Palekaua St.   Honolulu 96816 variety-school.org	K–12 COED	Independent 732-2835 jchongchua@variety-school.org	41/10	\$38,500 90%	HAIS; WASC	Licensed
<b>WAOLANI JUDD NAZARENE SCHOOL</b> 408 N. Judd St.   Honolulu 96817 wjns.org	PK–8 COED	Church of the Nazarene 531-5252 ext. 302 office@wjns.org	229/19	\$7,500– \$10,980 5%	HAIS, WASC	Licensed
<b>WINDWARD NAZARENE ACADEMY</b> 45-232 Pua'ae Road   Kāne'ohe 96744 wnahawaii.com	PK–8 COED	Church of the Nazarene 235-8787 ext. 203 mkamanu@windwardnazarene.com	175/15	\$8,836– \$8,730 68%	HAIS; WASC	Licensed





# TOP BEACHES IN OAHU

- **LANIKAI BEACH**

Mokulua Dr Kailua

Soft sand, with two lovely offshore islands make it a picture-postcard spot.

- **KAILUA BEACH PARK**

526 Kawailoa Rd Kailua

A world-class windsurfing destination .

- **WAIKIKI BEACH**

526 Kawailoa Rd Kailua

White sand coast fronted by hotels and tourist facilities.

- **WAIMANALO BEACH**

41-010 Wailea St Waimanalo

Ideal for swimming, body surfing, and boogie boarding.

- **SUNSET BEACH**

59 Kamehameha Hwy Haleiwa

Ideal for swimming and snorkeling or just relaxing on the beach during summer months

- **WAIMEA BAY BEACH PARK**

61-031 Kamehameha Hwy Haleiwa

Known as one of the most famous big wave surf sites in the world during the winter months .

- **KAHANA BAY BEACH PARK**

52222 Kamehameha Hwy Kahana

An ideal spot if you are looking for trees for shade, picnic tables to enjoy a packed lunch. It is also a popular local spot for fishing.

- **MALAEKAHANA BEACH**

56-155 Kamehameha Hwy Kahuku

This beach has great swimming conditions just make sure you wear reef shoes since the nearshore waters are rocky.

- **ALA MOANA BEACH PARK**

1450 Ala Moana Blvd Honolulu

A popular destination for Honolulu residents, Ala Moana is a wide, seemingly endless, half-mile-long white sandy beach protected by a reef with usually calm clear waters.



# RELAX & ENJOY

## LUXURY RESORTS

- Hilton Hawaiian Village Waikiki Beach Resort
  - 2005 Kālia Rd, Honolulu
  - 808-949-4321
- The Royal Hawaiian
  - 2259 Kalakaua Ave, Honolulu
  - 808-923-7311
- Halekulani Hotel
  - 2199 Kalia Road, Honolulu
  - (808) 923-2311.
- Aulani, a Disney Resort & Spa
  - 92-1185 Aliʻinui Dr, Kapolei
  - 866-443-4763
- Turtle Bay Resort
  - 57-091 Kamehameha Hwy, Kahuku
  - 808-293-6000
- Four Seasons Resort Oʻahu at Ko Olina
  - 92-1001 Olani St, Kapolei
  - 808-679-0079
- Moana Surfrider, A Westin Resort & Spa, Waikīkī Beach
  - 2365 Kalakaua Ave, Honolulu
  - 808-922-3111
- Marriott's Ko 'Olina Beach Club
  - 92-161 Waipahe Place Marriott Vacation Club Kapolei
  - 808-679-4700
- The Kahala Hotel & Resort
  - 5000 Kahala Ave, Honolulu
  - 808-739-8888
- Alohilani Resort Waikīkī Beach
  - 2490 Kalakaua Ave, Honolulu
  - 808-922-1233

## RESORT POOLS

- Aulani, a Disney Resort & Spa
  - 92-1185 Aliʻinui Dr, Kapolei
  - 866-443-4763
- Hilton Hawaiian Village Waikīkī Beach Resort
  - 2005 Kālia Rd, Honolulu
  - 808-949-4321
- Sheraton Waikiki
  - 2255 Kalakaua Ave, Honolulu
  - 808-922-4422
- Four Seasons Resort Oʻahu at Ko Olina
  - 92-1001 Olani St, Kapolei
  - 808-679-0079
- Turtle Bay Resort
  - 57-091 Kamehameha Hwy, Kahuku
  - 808-293-6000

## BED & BREAKFAST OR INNS

- Diamond Head B&B
  - 3240 Noela Dr, Honolulu
  - 808-923-3360
- Mānoa Valley Inn
  - 2001 Vancouver Dr, Honolulu
  - 808-947-6019
- Hula Breeze B&B
  - 172 Kuumele Pl Kailua
  - (888) 271-2681
- Sheffield House Bed & Breakfast
  - 131 Kuulei Rd, Kailua
  - 808-262-0721
- Manu Mele Bed and Breakfast
  - 153 Kailuana Pl, Kailua
  - 808-262-0016

# HOTELS FOR ROMANCE

- The Royal Hawaiian
  - 2259 Kalakaua Ave, Honolulu
  - 808-923-7311
- Turtle Bay Resort
  - 57-091 Kamehameha Hwy, Kahuku
  - 808-293-6000
- Four Seasons Resort O'ahu at Ko Olina
  - 92-1001 Olani St, Kapolei
  - 808-679-0079
- Halekulani Hotel
  - 2199 Kalia Road, Honolulu
  - (808) 923-2311.
- Hilton Hawaiian Village Waikīkī Beach Resort
  - 2005 Kālia Rd, Honolulu
  - 808-949-4321
- Moana Surfrider, A Westin Resort & Spa, Waikīkī Beach
  - 2365 Kalakaua Ave, Honolulu
  - 808-922-3111
- The Kahala Hotel & Resort
  - 5000 Kahala Ave, Honolulu
  - 808-739-8888
- Marriott's Ko 'Olina Beach Club
  - 92-161 Waipahe Place Marriott Vacation Club Kapolei
  - 808-679-4700
- Outrigger Reef Waikīkī Beach Resort
  - Waikiki Beach Walk, 2169 Kalia Rd, Honolulu
  - 808-923-3111
- Hyatt Regency Waikīkī Beach Resort and Spa
  - 2424 Kalakaua Ave, Honolulu
  - 808-923-1234





# RESORTS FOR FAMILIES

- Aulani, a Disney Resort & Spa
  - 92-1185 Ali'inui Dr, Kapolei
  - 866-443-4763
- Hilton Hawaiian Village Waikīkī Beach Resort
  - 2005 Kālia Rd, Honolulu
  - 808-949-4321
- Turtle Bay Resort
  - 57-091 Kamehameha Hwy, Kahuku
  - 808-293-6000
- Outrigger Reef Waikīkī Beach Resort
  - Waikiki Beach Walk, 2169 Kalia Rd, Honolulu
  - 808-923-3111
- Marriott's Ko 'Olina Beach Club
  - 92-161 Waipahe Place Marriott Vacation Club Kapolei
  - 808-679-4700
- Hale Koa Hotel
  - 2055 Kalia Rd Honolulu
  - (808) 955-0555
- Four Seasons Resort O'ahu at Ko Olina
  - 92-1001 Olani St, Kapolei
  - 808-679-0079
- Embassy Suites by Hilton Waikīkī Beach Walk
  - 201 Beachwalk St Honolulu
  - (808) 921-2345
- Alohilani Resort Waikīkī Beach
  - 2490 Kalakaua Ave Honolulu
  - (808) 922-1233
- Coconut Waikīkī Hotel
  - 450 Lewers Street Waikiki Beach Honolulu
  - (808) 923-8828



# BOUTIQUE HOTELS

- Halekulani
  - 2199 Kalia Rd Honolulu
  - (808) 923-2311
- Queen Kapiʻolani Hotel
  - 150 Kapahulu Ave Honolulu
  - (808) 922-1941
- The Kahala Hotel and Resort
  - 5000 Kahala Ave Honolulu
  - (808) 739-8888
- Outrigger Regency on Beachwalk
  - 255 Beach Walk Honolulu
  - (808) 922-3871
- The Modern Honolulu
  - 1775 Ala Moana Blvd Honolulu
  - (855) 970-4161
- The Surfjack Hotel & Swim Club
  - 412 Lewers St Honolulu
  - (808) 923-8882
- Coconut Waikīkī Hotel
  - 450 Lewers Street Waikiki Beach Honolulu
  - (808) 923-8828
- Lotus Honolulu at Diamond Head
  - 2885 Kalakaua Ave Honolulu
  - (808) 922-1700
- Aqua Palms Waikīkī
  - 1850 Ala Moana Blvd Honolulu
  - (808) 947-7256
- Park Shore Waikīkī Hotel
  - 2586 Kalakaua Ave Honolulu
  - (808) 923-0411



# BUDGET-FRIENDLY HOTELS AND RESORTS

- Hilton Hawaiian Village Waikīkī Beach Resort
  - 2005 Kālia Rd, Honolulu
  - 808-949-4321
- Outrigger Regency on Beachwalk
  - 255 Beach Walk Honolulu
  - (808) 922-3871
- Turtle Bay Resort
  - 57-091 Kamehameha Hwy, Kahuku
  - 808-293-6000
- Hale Koa Hotel
  - 2055 Kalia Rd Honolulu
  - (808) 955-0555
- Queen Kapiolani Hotel
  - 150 Kapahulu Ave Honolulu
  - (808) 922-1941
- Ala Moana Hotel
  - 410 Atkinson Dr Honolulu
  - (808) 955-4811
- Moana Surfrider, A Westin Resort & Spa, Waikīkī Beach
  - 2365 Kalakaua Avenue Honolulu
  - (808) 922-3111
- Sheraton Princess Kaiulani Hotel
  - 120 Kaiulani Ave Honolulu
  - (808) 922-5811
- Marriott's Ko 'Olina Beach Club
  - 92-161 Waipahe Place Marriott Vacation Club Kapolei
  - 808-679-4700
- Embassy Suites by Hilton Waikīkī Beach Walk
  - 201 Beachwalk St Honolulu
  - (808) 921-2345



# PET-FRIENDLY HOTELS AND RESORTS

- The Kahala Hotel & Resort
  - 5000 Kahala Ave Honolulu
  - (808) 739-8888
- Residence Inn by Marriott Oahu Kapolei
  - 731 Kunehi St Kapolei
  - (808) 674-4480
- The Surfjack Hotel & Swim Club
  - 412 Lewers St Honolulu
  - (808) 923-8882
- Hyatt Centric Waikiki Beach
  - 349 Seaside Ave Honolulu
  - (808) 237-1234
- Hyatt Regency Waikiki Beach Resort & Spa
  - 2424 Kalakaua Ave Honolulu
  - (808) 923-1234
- The Laylow, Autograph Collection
  - 2299 Kuhio Avenue Honolulu
  - (808) 922-6600
- Lotus Honolulu at Diamond Head
  - 2885 Kalakaua Ave Honolulu
  - (808) 922-1700
- Tiki Moon Villas
  - 55-367 Kamehameha Hwy Laie
  - (916) 410-1277
- The Lodge at Kane'ohe Bay
  - Mcbh Kaneohe Bay Mcbh K Bay
  - (808) 254-2806



## RESORT SPAS

- Spa Halekulani
  - 2199 Kalia Rd Honolulu
  - (808) 923-2311
- Moana Lani Spa, a Heavenly Spa by Westin
  - 2365 Kalakaua Ave Honolulu
  - (808) 237-2535
- Mandara Spa
  - 2008 Kalia Rd Hilton Hawaiian Village Beach Resort & Spa Honolulu
  - (808) 945-7721
- The Kahala Spa
  - 5000 Kahala Ave Honolulu
  - (808) 739-8938
- Laniwai Spa
  - 92-1185 Ali'inui Dr Kapolei
  - (866) 443-4763

## VACATION TIMESHARE

- Hilton Grand Vacations Club Hokulani Waikiki Honolulu
  - 2181 Kalakaua Ave Honolulu
  - (808) 462-4000
- Aulani, a Disney Resort & Spa
  - 92-1185 Ali'inui Dr, Kapolei
  - 866-443-4763
- Marriott's Ko 'Olina Beach Club
  - 92-161 Waipahe Place Marriott Vacation Club Kapolei
  - 808-679-4700
- Club Wyndham at Waikīkī Beach Walk
  - 227 Lewers St Honolulu
  - (855) 421-4786
- Sheraton Waikiki
  - 2255 Kalakaua Avenue Honolulu
  - (808) 922-4422





# LET'S EXPLORE!



- **HANAUMA BAY NATURE PRESERVE**

100 Hanauma Bay Rd Honolulu

This stunning bay feels like a world away from the bustle of the city, which cannot even be seen from the beach as the large bay is surrounded by the lush green, gently fluted hills of Koko Head.

- **PEARL HARBOR**

1 Arizona Memorial Pl Honolulu

It is one of the most significant sites in the history of the United States and a National Historic Landmark.



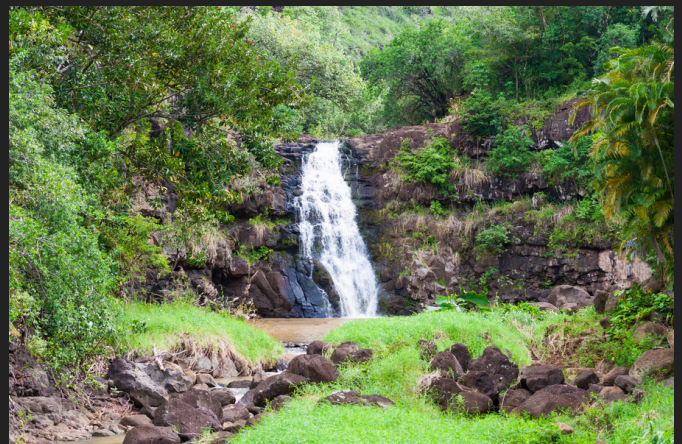
- **HONOLULU**

Honolulu has it all – from the art galleries and international cuisine of the Chinatown district to the fine dining, live music and nightlife of Waikiki.

- **WAIMEA VALLEY**

59-864 Kamehameha Hwy Haleiwa

Many folks also utilize the beautiful grounds for concerts, parties, weddings, special events, and even a weekly farmers market.







## • NUUANU PALI LOOKOUT

Nuuanu Pali Dr, Kaneohe

One of the most stunning views of Oahu's Ko'olau Mountain Range.

## • DIAMOND HEAD STATE MONUMENT

Diamond Head Rd Honolulu

Also known as Le'ahi, is located just east of Waikiki, on the island of Oahu, and is the most recognized landmark in Hawaii.



## • CHINAMAN'S HAT - MOKOLII

located on the Windward side, off-shore from Kualoa Beach Park, North Kaneohe Bay

This little cone-shaped lump of lava off Kualoa Point is officially called Mokoli'i but has earned the nickname Chinaman's Hat from its resemblance to the straw hats that the Chinese immigrants wore.

## • VALLEY OF THE TEMPLES

47-200 Kahekili Hwy Kahekili

It is a favorite gathering place for people of all faiths to enjoy some peace and tranquility.





LET'S HIKE!

## WAIKIKI & HONOLULU HIKING TRAILS

- Diamond Head (Leahi) Hiking Trail - #1 Best Hike on Oahu
- Koko Crater Railway Trail - #2 Best Hike on Oahu
- Kulioouou Ridge Trail - #4 Best Hike on Oahu
- Manoa Falls Trail - #6 Best Hike on Oahu

## NORTH SHORE HIKING TRAILS

- Ehukai Pillbox Hike - #7 Best Hike on Oahu
- Waimea Falls Trail
- Laie Falls Trail

## EAST 'WINDWARD' OAHU HIKING TRAILS

- Makapuu Lighthouse Point Trail - #3 Best Hike on Oahu
- Lanikai Pillbox Hike (Kaiwa Ridge Trail) - #5 Best Hike on Oahu
- Pu'u Ma'eli'eli Trail - #9 Best Hike on Oahu

## CENTRAL OAHU HIKING TRAILS

- Aiea Loop Trail - #8 Best Hike on Oahu



# OUR TEAM'S TOP HIKES



- Lanikai Pillbox

- Best for sunrise. This is not a difficult hike as it is short, but it is also very steep. At a fast pace you could make it to the first pillbox in 20 minutes or less. Parking restrictions in Lanikai will make it necessary to either be done and back to your car by 7am or you will need to get dropped off near the trailhead. Bring a lot of water if you are doing it during the day as it is an exposed hike almost the entire time. Our recommendation is to do this hike beginning in the dark or at dusk to catch the incredible views of the sunrise over the Mokes (Mokulua islands). Suitable for capable children and adults.

- Lulumahu Falls

- is between central and windward Oahu in Nuuanu area. Technically, you should visit the DLNR website and pay \$2 for a permit to hike this trail on the day of your choosing. Not everybody does this but just in case- you should do it. The trail is easy/moderate just because it can be muddy and slippery in places that you have to cross a stream. Best to bring bug spray and good grip shoes. This trail is suitable for capable children and adults. It's only a mile to the water fall and its beautiful!

- Waimea Falls

- This is a fully paved trail in the Waimea Valley located on Oahu's North Shore. I like this trail because it is family friendly and you can swim in the falls at the end. The walk to the falls is beautiful and educational of Hawaiian plantlife and culture. The cafe at the beginning of the trail is the perfect place to grab lunch and see the resident peacocks. This hike is great for all ages and people.

**Lanikai Pillbox**



**Lulumahu Falls**



**Waimea Falls**





# OUR TEAM'S TOP HIKES



- Pink Pillbox / Ma'ili Pillbox  
(Pu'u O Hulu Trail)

- Located Leeward Coast of Oahu. It will reward you with the best views of the Ka'ena Point, Keawa'ula Beach (Yokohama Beach), Mount Kaala and even Kapolei, home to the Ko Olina Resort all at the same time! Don't forget to try and catch a sunset as well, it's stunning on the West Side. It is rated moderate on All Trails.

- Likeke Falls

- Is located in the Windward Oahu. If your looking for a short, beautiful, and a stunning little waterfall hike, then check this gem out. Located in Kaneohe, this place is easy to find. The hike is kid-friendly and pet-friendly, It is rated moderate on All Trails

- Ka'au Crater

- is located in Honolulu. It is an all day hike with waterfalls, ridges, and jurassic-like jungle. This trail is for experienced hikers only. It involves rope climbing and narrow ridges, rated hard on All Trails

- Aiea Loop Trail

- The Aiea Loop Trail is a great hike for beginners and families. It offers spectacular views of iconic Hawaii hills, amazing native forests and peeks of the ocean. You can also see locals walk their dogs or run the trail. It is rated moderate on All Trails.



**Pink Pillbox / Ma'ili Pillbox**  
(Pu'u O Hulu Trail)



**Likeke Falls**



**Ka'au Crater**



**Aiea Loop Trail**





# WATER ACTIVITIES

## BOAT & SAILING TOURS

Staying in Oahu is never complete without a cruise, or having a nice dinner on the boat.

- Sail Blue Hawaii
  - 1025 Ala Moana Blvd Honolulu
  - [www.SailBlueHawaii.com](http://www.SailBlueHawaii.com)
  - (808) 347-0235
- Captain Bruce Private Yacht Charters
  - 46-499 Kamehameha Hwy He'eia Kea Boat Harbor Kaneohe
  - [cptbruce.com](http://cptbruce.com)
  - (808) 922-2344
- Dolphin Excursions Hawaii
  - 85-491 Farrington Hwy Waianae Boat Harbor Waianae
  - [dolphinexcursions.com](http://dolphinexcursions.com)
  - (808) 239-5579
- Kualoa Ranch
  - 49-560 Kamehameha Hwy Kaneohe
  - [www.kualoa.com](http://www.kualoa.com)
  - (808) 237-7321
- Holokai Catamaran
  - 2169 Kalia Rd Honolulu
  - [www.sailholokai.com](http://www.sailholokai.com)
  - (808) 922-2210

## SNORKEL & SCUBA TOURS

See, snorkel and swim with colorful marine life under the Oahu sea.

- Oahu Diving
  - 1125 Ala Moana Blvd Honolulu
  - [www.oahudiving.com](http://www.oahudiving.com)
  - (808) 721-4210
- Trident Adventures
  - 92-100 Waipahe Pl Kapolei
  - [tridentadventures.com](http://tridentadventures.com)
  - (808) 762-3483
- Hanauma Bay Snorkel Adventures
  - 7192 Kalaniana'ole Hwy C121 Honolulu
  - [www.hanaumabaysnorkel.com](http://www.hanaumabaysnorkel.com)
  - (808) 306-3393
- Dolphin Excursions Hawaii
  - 85-491 Farrington Hwy Waianae Boat Harbor Waianae
  - [www.dolphinexcursions.com](http://www.dolphinexcursions.com)
  - (808) 239-5579
- Aloha Scuba Diving Company
  - 1640 Wilikina Dr Wahiawa
  - [www.divealohascuba.com](http://www.divealohascuba.com)
  - (808) 622-3483

## SURF & PADDLEBOARD TOURS

Get a chance to catch and experience the waves.

- Surf N Sea
  - 62-595 Kamehameha Hwy Haleiwa
  - [www.surfnsea.com](http://www.surfnsea.com)
  - (808) 637-9887
- Kailua Beach Adventures
  - 130 Kailua Rd Ste 101B Kailua
  - [www.kailuabeachadventures.com](http://www.kailuabeachadventures.com)
  - (808) 262-2555
- Sea & Board Sports Hawaii
  - 62-540 Kamehameha Hwy Haleiwa
  - [www.hawaiiisuptours.com](http://www.hawaiiisuptours.com)
  - (808) 352-9775
- Mickeys Surf School
  - 2425 Kalakaua Ave Honolulu
  - [mickeysurfschool.com](http://mickeysurfschool.com)
  - (808) 218-5238
- Ty Gurney Surf School
  - 205 Lewers St The Imperial Resort Waikiki Honolulu
  - [tygurneysurfschool.com](http://tygurneysurfschool.com)
  - (808) 271-9557

## WHALE WATCHING TOURS & MARINE LIFE

Have an up-close encounter and gaze in wonder at the majestic humpback whales, gentle manta rays and turtles or the feared and misunderstood sharks.

- Dolphin Excursions Hawaii
  - 85-491 Farrington Hwy Waianae Boat Harbor Waianae
  - [www.dolphinexcursions.com](http://www.dolphinexcursions.com)
  - (808) 239-5579
- Wild Side Specialty Tours
  - 85-371 Farrington Hwy Waianae Boat Harbor Waianae
  - [sailhawaii.com](http://sailhawaii.com)
  - (808) 306-7273
- Ko Olina Ocean Adventures
  - 92-100 Waipahe Pl Kapolei
  - [koolinaoceanadventures.com](http://koolinaoceanadventures.com)
  - (808) 396-2068
- Iruka Hawaii
  - P.O. Box 8042 Honolulu
  - [www.hawaiidolphin.com/](http://www.hawaiidolphin.com/)
  - (808) 636-8440
- Pink Sails Waikiki
  - 1651 Ala Moana Blvd Ste 600A Honolulu
  - [pinksailswaikiki.com](http://pinksailswaikiki.com)
  - (808) 922-7722

# WANT MORE EXCITING OCEAN ADVENTURES?

Oahu offers these exhilarating activities for you!

## KAYAK TOURS

- Kailua Beach Adventures
  - 130 Kailua Rd Ste 101B Kailua
  - [www.kailuabeachadventures.com](http://www.kailuabeachadventures.com)
  - (808) 262-2555
- Kama'aina Kayak and Snorkel Eco-Ventures
  - 46-465 Kamehameha Hwy He'eia State Park Kaneohe
  - [www.kamaainakidskayaking.org](http://www.kamaainakidskayaking.org)
  - (808) 781-4773
- Twogood Kayaks Hawaii
  - 134 Hamakua Dr Unit B Kailua
  - [www.twogoodkayaks.com](http://www.twogoodkayaks.com)
  - (808) 262-5656
- Kualoa Ranch
  - 49-560 Kamehameha Hwy Kaneohe
  - [www.kualoa.com](http://www.kualoa.com)
  - (808) 237-7321
- Active Oahu Tours
  - 55-160 Naupaka St Laie
  - [www.activeoahutours.com](http://www.activeoahutours.com)
  - (808) 498-1894

## WIND SURFING TOURS

- Kualoa Ranch
  - 49-560 Kamehameha Hwy Kaneohe
  - [www.kualoa.com](http://www.kualoa.com)
  - (808) 237-7321
- Dolphin Excursions Hawaii
  - 85-491 Farrington Hwy Waianae Boat Harbor Waianae
  - [www.dolphinexcursions.com](http://www.dolphinexcursions.com)
  - (808) 239-5579
- E Noa Tours
  - 3015 Koapaka St Ste G Honolulu
  - [www.enoa.com](http://www.enoa.com)
  - (808) 591-2561
- Kailua Beach Adventures
  - 130 Kailua Rd Ste 101B Kailua
  - [www.kailuabeachadventures.com](http://www.kailuabeachadventures.com)
  - (808) 262-2555
- Sea & Board Sports Hawaii
  - 62-540 Kamehameha Hwy Haleiwa
  - [www.hawaiiisuptours.com](http://www.hawaiiisuptours.com)
  - (808) 352-9775

## KANEOHE BAY SAND BAR TOUR

- Captain Bruce Private Yacht Charters
  - 46-499 Kamehameha Hwy He'eia Kea Boat Harbor Kaneohe
  - [cptbruce.com](http://cptbruce.com)
  - (808) 922-2344
- Kaneohe Bay Private Charters
  - 46-499 Kamehameha Hwy Heeia Kea Boat Harbor Kaneohe
  - (808) 398-1704
- Captain Bob's Picnic Sail
  - 1860 Ala Moana Blvd Ste 414 Honolulu
  - [www.captainbobspicnicsail.com](http://www.captainbobspicnicsail.com)
  - (808) 942-5077
- Kama'aina Kayak and Snorkel Eco-Ventures
  - 46-465 Kamehameha Hwy He'eia State Park Kaneohe
  - [www.kamaainakidskayaking.org](http://www.kamaainakidskayaking.org)
  - (808) 781-4773

## KITE BOARDING TOURS

- Kailua Beach Adventures
  - 130 Kailua Rd Ste 101B Kailua
  - [www.kailuabeachadventures.com](http://www.kailuabeachadventures.com)
  - (808) 262-2555
- Moku Hawaii
  - 2446 Koa Ave Honolulu
  - [www.mokuhawaii.surf](http://www.mokuhawaii.surf)
  - (808) 470-8613
- Hawaiian WaterSports
  - 171 Hamakua Dr Kailua
  - [hawaiianwatersports.com](http://hawaiianwatersports.com)
  - (808) 262-5483
- Kaneohe Bay Ocean Sports
  - 46-499 Kamehameha Hwy Kaneohe
  - [www.kaneohebayoceansports.com](http://www.kaneohebayoceansports.com)
  - (808) 239-8886



## PARASAILING TOURS

- Hawaiian Parasail
  - 1651 Ala Moana Blvd Slip 600B Honolulu
  - hawaiianparasail.com
  - (808) 591-1280
- Action Sports Hawaii
  - Sand Island Rd Honolulu
  - actionsportshawaii.com
  - (808) 284-1771
- Paradise Watersports Hawaii
  - 1025 Ala Moana Blvd Honolulu
  - goparasailinghawaii.com
  - (808) 697-2787
- X-Treme Parasail
  - 1085 Ala Moana Blvd Slip A Honolulu
  - xtremeparasail.com
  - (808) 737-3599
- H2O Sports Hawaii
  - 377 Keahole St Ste E 103 Honolulu
  - www.h2osportshawaii.com
  - (808) 396-0100

## JET - SKIING TOURS

- Aloha Jet Ski
  - 8 Sand Island Access Rd Honolulu
  - www.alohajetski.com
  - (808) 721-1754
- Action Sports Hawaii
  - Sand Island Rd Honolulu
  - actionsportshawaii.com
  - (808) 284-1771
- Paradise Watersports Hawaii
  - 1025 Ala Moana Blvd Honolulu
  - goparasailinghawaii.com
  - (808) 697-2787
- Hawaii Water Sports Center
  - 7192 Kalanianaʻole Hwy Koko Marina Center Honolulu
  - hawaiiwatersportscenter.com
  - (808) 395-3773
- X-Treme Parasail
  - 1085 Ala Moana Blvd Slip A Honolulu
  - xtremeparasail.com
  - (808) 737-3599







# EXCITING ADVENTURES

## DINNER CRUISE OR SUNSET SAIL

- Holokai Catamaran
  - 2169 Kalia Rd Honolulu
  - [www.sailholokai.com](http://www.sailholokai.com)
  - (808) 922-2210
- Vida Mia
  - 1651 Ala Moana Blvd Slip 499 Honolulu
  - [thevidamia.com](http://thevidamia.com)
  - (808) 746-8432
- Maita'i Catamaran
  - 2255 Kalakaua Ave Honolulu
  - [www.maitaicatamaran.net](http://www.maitaicatamaran.net)
  - (808) 922-5665
- Mana Cruises + Charters
  - 92-100 Waipahe Pl Kapolei
  - [www.manacruises.com](http://www.manacruises.com)
  - (808) 664-1164
- Ocean Joy Cruises
  - 92-100 Waipahe Pl Slip I-23 Kapolei
  - [oceanjoycruises.com](http://oceanjoycruises.com)
  - (808) 677-1277

## HELICOPTER TOUR

- Rainbow Helicopters
  - 155 Kapalulu Pl Ste 197 Honolulu
  - [www.rainbowhelicopters.com](http://www.rainbowhelicopters.com)
  - (888) 779-7724
- Magnum Helicopters
  - 130 Iolana Pl Honolulu
  - [www.magnumhelicopters.com](http://www.magnumhelicopters.com)
  - (808) 833-4354
- Blue Hawaiian Helicopters
  - 99 Kaulele Pl Honolulu
  - [www.bluehawaiian.com](http://www.bluehawaiian.com)
  - (800) 786-2583
- Paradise Helicopters
  - 57-091 Kamehameha Hwy Turtle Bay Resort Kahuku
  - [paradisecopters.com](http://paradisecopters.com)
  - (808) 969-7392
- Mauna Loa Helicopter Tours
  - 134 Nakolo Pl Ste 203 Honolulu
  - [maunaloahelicoptertours.com](http://maunaloahelicoptertours.com)
  - (808) 694-3550

## EXTREME TOUR

- Kualoa Ranch
  - 49-560 Kamehameha Hwy Kaneohe
  - [www.kualoa.com](http://www.kualoa.com)
  - (808) 237-7321
- Ali'i Tour
  - 49-227 KAMEHAMEHA Hwy, Kaaawa
  - (808) 358-9729
- E Noa Tours
  - 3015 Koapaka St Ste G Honolulu
  - [www.enoa.com](http://www.enoa.com)
  - (808) 591-2561
- Paradise Air Hawaii
  - 68-760 Farrington Hwy Ste B3 Waialua
  - [www.paradiseairhawaii.com](http://www.paradiseairhawaii.com)
  - (808) 497-6033
- Skydive Hawaii
  - 68-760 Farrington Hwy Ste 1 Dillingham Airfield Waialua
  - [www.skydivehawaii.com](http://www.skydivehawaii.com)
  - (808) 637-9700

## ZIPLINE TOURS

- Bay View Mini-Putt & Zipline
  - 45-285 Kaneohe Bay Dr Kaneohe
  - [bayviewminiputt.com](http://bayviewminiputt.com)
  - (808) 237-7321
- CLIMB Works Keana Farms
  - 1 Enos Rd Kahuku
  - [www.climbworks.com](http://www.climbworks.com)
  - (808) 200-7906
- Coral Crater Adventure Park
  - 91-1780 Midway Rd Kapolei
  - [coralcrater.com](http://coralcrater.com)
  - (808) 626-5773
- Kualoa Ranch
  - 49-560 Kamehameha Hwy Kaneohe
  - [www.kualoa.com](http://www.kualoa.com)
  - (808) 237-7321
- Action Sports Hawaii
  - Sand Island Rd Honolulu
  - [actionsportshawaii.com](http://actionsportshawaii.com)
  - (808) 284-1771



## LŪ'AU

- Chief's Luau
  - 400 Farrington Hwy Kapolei
  - [www.chiefsluauhawaii.com](http://www.chiefsluauhawaii.com)
  - (808) 664-0448
- Toa Luau
  - 59-864 Kamehameha Hwy Haleiwa
  - [www.toaluau.com](http://www.toaluau.com)
  - (877) 778-8505
- Paradise Cove Luau
  - 92-1089 Alii Nui Dr Kapolei
  - [www.paradisecove.com](http://www.paradisecove.com)
  - (808) 762-2186
- Ka Moana Luau
  - 41-202 Kalanianaʻole Hwy Waimānalo
  - [www.moanalauau.com](http://www.moanalauau.com)
  - (808) 926-3800
- Diamond Head Luau
  - 2777 Kalakaua Ave Honolulu
  - [www.diamondheadbeachluau.com](http://www.diamondheadbeachluau.com)
  - (808) 926-3800

## LIVE SHOW

- Toa Luau
  - 59-864 Kamehameha Hwy Haleiwa
  - [www.toaluau.com](http://www.toaluau.com)
  - (877) 778-8505
- Ron Artis Family
  - 67-202 Kupahu Waialua
  - [www.ronartis.com](http://www.ronartis.com)
  - (808) 222-7589
- Ring of Fire
  - PO Box 41 Laie
  - [www.ringoffirehawaii.com](http://www.ringoffirehawaii.com)
  - (808) 304-2096
- Bar 35
  - 35 N Hotel St Honolulu
  - [www.bar35hawaii.com](http://www.bar35hawaii.com)
  - (808) 537-3535
- House Without A Key
  - 2199 Kalia Rd Honolulu
  - [www.halekulani.com](http://www.halekulani.com)
  - (808) 923-2311



# KIDS' CORNER



- **FUN FACTORY**

95-1249 Meheula Pkwy Ste 175  
Town Center of Mililani Mililani

Children's amusement chain featuring arcade games, a prize gallery & birthday celebrations.

- **GOT FUNN? PLAY CENTER FOR KIDS**

46-056 Kamehameha Hwy Kaneohe

Offers a variety of play areas that helps promote the social, emotional, and cognitive development of young children

- **ROOM WITH A CLUE**

1130 N Nimitz Hwy UNIT B 295  
Honolulu

Room With a Clue is Honolulu's real-life escape game adventure. You're locked in a room filled with mysteries, clues, and puzzles.

- **BREAKOUT WAIKIKI - ESCAPE ROOMS**

227 Lewers St Ste 112 Honolulu

Entertainment option with multiple themed rooms where groups of players solve puzzles to escape.

- **STARS ABOVE HAWAII**

92-1001 Olani St Kapolei

Be a Star Explorer, and utilize large GPS telescopes capable of seeing inside the craters of the Moon, the clouds of Jupiter in color, the rings of Saturn, & many more.

- **HAWAII NATURE CENTER**

2131 Makiki Heights Dr Honolulu

A local nonprofit that specializes in environmental education for children and families

- **CORAL CRATER ADVENTURE PARK**

91-1780 Midway Rd Kapolei

Outdoor activities including obstacle & climbing courses, plus zip lining & guided ATV tours.

- **USS BOWFIN SUBMARINE MUSEUM & PARK**

11 Arizona Memorial Dr, Honolulu

See historical artifacts from WWII & an exhibit on naval ships presented in this wartime submarine

### ***Polynesian Cultural Center***



- **HAWAII CHILDREN'S DISCOVERY CENTER**

111 Ohe St Honolulu

Exploration center where kids play, dress up as different professions & learn about other cultures..

- **HO'OMALUHIA BOTANICAL GARDEN**

45-680 Luluku Rd Kaneohe

400 acres of tropical plants along with a man-made freshwater lake, hiking trails & free campground

- **PEARL HARBOR AVIATION MUSEUM**

319 Lexington Blvd Honolulu

WWII-focused museum presents historical aircraft, exhibits & even a simulated flight experience

- **CHAMBERS ESCAPE GAMES**

550 Halekauwila St Unit 201 Honolulu

Test your wits, skill, and teamwork as you race against the clock in the most exhilarating real-life adventure you will ever play.

- **BISHOP MUSEUM**

1525 Bernice St Honolulu

Showcases exhibits on Hawaiian & other Pacific Island cultures, plus features a planetarium.

- **POLYNESIAN CULTURAL CENTER**

55-370 Kamehameha Hwy Laie

Center highlighting various enduring Pacific island cultures with luaus, live shows, tours & more.

- **QUEEN EMMA SUMMER PALACE**

2913 Pali Hwy Honolulu

Once the summer palace for Queen Emma & family, this 19th-century home is now a museum with tours.





- **KUALOA RANCH**

550 Halekauwila St Unit 201 Honolulu  
A 4,000-acre private nature reserve and working cattle ranch, as well as a popular tourist attraction and filming location on the windward coast of Oahu

- **DOLPHIN QUEST OAHU - SWIM WITH DOLPHINS**

5000 Kahala Ave Honolulu  
Interactive dolphin experiences including swimming, feeding & petting in an enclosed lagoon.

- **DOLPHIN QUEST OAHU - SWIM WITH DOLPHINS**

5000 Kahala Ave Honolulu  
Interactive dolphin experiences including swimming, feeding & petting in an enclosed lagoon.

- **TROPIC LIGHTNING MUSEUM**

1525 Bernice St Honolulu  
Located at the Army's Schofield Barracks provides insights into the growth of the U.S. military presence on Oahu.

- **KIDS CITY KAPOLEI**

91-5431 Kapolei Pkwy Ste1117 Kapolei  
Multiple innovative play sections for children to create, learn, and interact.

- **IOLANI PALACE**

364 S King St Honolulu  
Opulent 19th-century home of Hawaii's last monarchs operating as a museum with tours & exhibits.



*Kualoa Ranch*



- **WAIKIKI AQUARIUM**

2777 Kalakaua Avenue Honolulu

It was founded in 1904 and has been an institution of the University of Hawaii at Manoa since 1919

- **HONOLULU ZOO**

151 Kapahulu Ave Honolulu

The only zoo in the US that originated in a King's grant of royal lands.

- **LAWRENCE LOVESTOCK**

47-581 Mapele Pl Kahaluu

It is a home to growing farm of animals- offering a unique experience for families, small groups and special needs keiki.

- **TWILIGHT TOURS**

151 Kapahulu Ave The Honolulu Zoo  
Honolulu

Watch some of our animals prepare to sleep, while others are just waking up. Learn about the animals' biology and behavior, and the role that the Zoo plays in conservation of our endangered species.

- **AULANI WAIKOLOHE POOL**

92-1185 Aliinui Dr Kapolei

Explore the pools, water slides, whirlpool spas and kids' play areas, a great destination for aquatic family fun

- **KIDS CITY KAPOLEI**

91-5431 Kapolei Pkwy Ste1117 Kapolei

Multiple innovative play sections for children to create, learn, and interact.

- **IOLANI PALACE**

364 S King St Honolulu

Opulent 19th-century home of Hawaii's last monarchs operating as a museum with tours & exhibits.

- **NALO KEIKI PANIOLO**

41-632 Mokulama St Waimanalo

Offering horseback riding lessons, riding day camps, horse included photo sessions, as well as event spaces.





# RECOMMENDED EATS



## MUST TRY RESTAURANTS IN NORTH SHORE

- Haleiwa Beach House \$\$  
62-540 Kamehameha Hwy Haleiwa
  - offers a full menu of specialized dishes and one of the best views on the island
- Kono's Northshore \$\$  
66-250 Kamehameha Hwy Ste G110 Haleiwa
  - The ono pork-inspired dishes range from breakfast bombers, plates, wraps, and salads.
- Uncle Bo's Haleiwa \$\$  
66-111 Kamehameha Hwy Unit 101 Haleiwa
  - Uncle Bo's modern fusion inspired dishes provides the perfect palette of flavors for the eclectic modern casual dining experience.
- Pupukea Grill \$\$  
59-680 Kamehameha Hwy Haleiwa
  - Serve various foods like rice bowls, curry, quesadillas, and desserts



Haleiwa Beach House  
Grilled Monchong



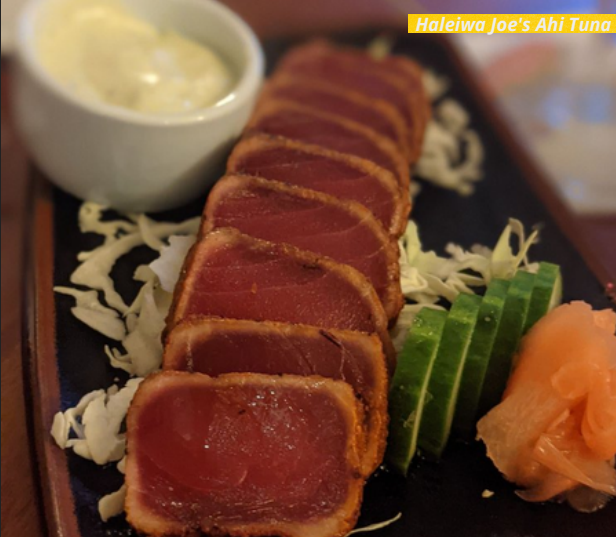
Kono's Northshore's  
Pig on grass



Wavans Brothers Burger



# MUST TRY RESTAURANTS IN NORTH SHORE



- Poke For The People \$\$  
66-528 A Kamehameha Hwy Scoop Of Paradise Haleiwa
  - An amazing place offering customizable Poke Bowls, with fresh ingredients.



- Haleiwa Joe's \$\$  
66-011 Kamehameha Hwy Haleiwa
  - Offers their customers local favorites alongside fresh catches to create a tasty island dish sure to please.
- Waialua Lunch Wagon \$\$  
Waialua, HI
  - Straight up specializing in Ahi Only and Ahi Katsu



- The Smoking Boar and the Coconut \$\$  
67-456 Goodale Ave Waialua
  - Well recommended by locals with fantastic food and vibe
- Farm To Barn Cafe & Juicery \$\$  
66-320 Kamehameha Hwy Haleiwa
  - a farm to table style of casual dining. From fresh cold pressed juices to buddah bowls we offer an array of deliciously affordable healthy grinds

# MUST TRY RESTAURANTS IN NORTH SHORE

- Kanak Attack \$\$

67-196 Goodale Ave Waialua

- Great Mexican food in Waialua with friendly customer service. It's a nice convenient lunch option in Waialua without having to battle the traffic and crowds in Haleiwa. They have great vegetarian options as well.

- Banyan's Island Grill \$\$

67-114 Kealohanui St Waialua

- One of the best Place to eat fresh, healthy and tasty in all Oahu. This spot has very good, quality food.

- Papa Ole's \$\$

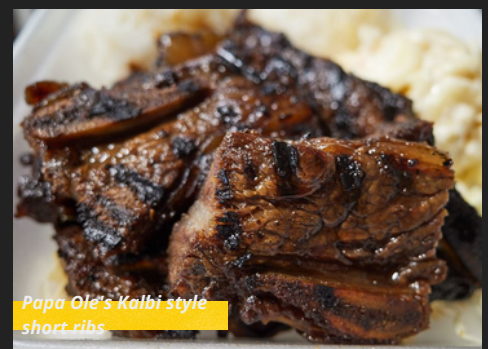
54-316 Kamehameha Hwy Ste 9 Hauula

- If you're looking for massively-portioned Hawaiian comfort food: this is the place to go. They offer amazing food and giving out huge portions.

- Maya's Tapas and Wines \$\$

66-250 Kamehameha Hwy Ste D-101 Haleiwa

- The ambience is great as well as the service, staff is amazing. Cocktails are amazing and also, the dishes are sophisticated excellent at food truck prices.







- Seven Brothers \$  
59-712 Kamehameha Hwy Haleiwa
  - Their burgers are big and juicy, well seasoned, and pretty tasty. Price is reasonable too.
- Kahuku Farms \$\$  
56-800 Kamehameha Hwy Kahuku
  - Kahuku Farms is a leading provider of fresh local produce on the North Shore of Oahu. They offer fresh farm to the table food and encourage a lifestyle of eating nutritious food, living sustainable ways, supporting local businesses.
- Lei Lei's Bar and Grill \$\$\$  
57-049 Kuilima Dr Kahuku
  - The open-air bar and grill serves three meals daily and specializes in ocean-fresh seafood dishes grilled ahi with ginger soy butter and a Hawaiian classic: ahi poke.
- Banzai Sushi Bar \$\$\$  
66-246 Kamehameha Hwy North Shore Marketplace Haleiwa
  - Offers local community and visitors alike with some of the finest sushi these islands have to offer. They serve unique quality sushi according to season.

# MUST TRY RESTAURANTS IN LEEWARD, OAHU



- The Pearl \$\$  
96-045 Ala Ike St Leeward Community College Pearl City
  - The restaurant is wonderfully situated, tastefully decorated and has a relaxed, yet upscale ambience.



- Honolulu Kitchen \$  
94-861 Farrington Hwy Waipahu
  - This family restaurant's specialty is their manapua that comes in various flavors, from sweet to savory.
- Button Up Cafe \$\$  
97-719 Kamehameha Hwy Ste A102 Pearl City
  - Offers a variety of breakfast items such as eggs benny, omelets, stuffed French toast, and ciabatta sandwiches.



- My Cafe \$\$  
563 Farrington Hwy Ste 101B Kapolei
  - specialize in innovative breakfast and lunch items inspired by 'ono local flavors. Their dishes are high quality, generously portioned, and made to order with quickness.



- Mahi'ahi Table \$\$  
91-5431 Kapolei Pkwy Ste 1704 Ka Makana Ali'i Kapolei
  - Features the freshest, homegrown ingredients, mouth-watering dishes and inventive cocktails to pay homage to the local heritage.
- Restaurant 604 \$\$  
57 Arizona Memorial Dr Honolulu
  - best dining option in Honolulu with an incredible selection of american cuisine and island style favorites at affordable prices.

# MUST TRY RESTAURANTS IN LEEWARD, OAHU

- Poke On Da Run \$\$  
909 Lehua Ave Pearl City
  - It is a perfect spot for some poke nachos. It's so fresh, the portion is huge and the service is quick and excellent.
- Moani Island Bistro & Bar \$\$  
91-5431 Kapolei Pkwy Ste 1001 Kapolei
  - Provides an incredible environment with awesome food while maintaining a seamless quality of service.
- Wat Get Kitchen \$\$  
94-752C Hikimoe St Waipahu
  - A Puerto Rican food place. They offer delicious Panadilla de queso and Ultimate Patele Plate as best sellers in their menu.
- 60Fore Bar & Grill \$\$  
2249 Essex Rd Kapolei
  - Brings "Eat Drink Aloha" to the Ewa side of the island. They offer great food, thirst quenching drinks, and as always, service with Aloha!
- Da Crawfish and Crabshack \$\$  
590 Farrington Hwy Unit 539 Kapolei
  - Offers dine-in service, take out and delivery orders. The food is delicious and have a great customer service.





# MUST TRY RESTAURANTS IN LEEWARD, OAHU



- The Alley Restaurant Bar & Grill \$\$  
99-115 Aiea Heights Dr Fl 3, Ste 310 Aiea
  - The Alley has some of the island's best in fried noodles, delicious chicken dishes and killer pizzas! Alongside the Alley is their amazing bakery that makes delectable cakes, brownies, and other sweet treats.



- Coquito's Latin Cuisine Restaurant \$\$  
85-773 Farrington Hwy Waianae
  - provide our guests with authentic and flavorful dishes that originated from various Latin countries.



- Ono Thai \$\$  
91-896 Makule Rd Ste 106 Ewa Beach
  - Hole-in-the-wall spot deep in Ewa Beach that serves great thai food for take-out and dine-in.
- West Side Bar & Grill \$\$  
590 Farrington Hwy Ste 536 Kapolei
  - This place is a hidden, locally owned gem. It's a casual, family, full bar and grill with great food and good music.



# MUST TRY RESTAURANTS IN WIND WARD, OAHU

- Adela's Country Eatery \$\$

45-1151 Kamehameha Hwy Ste 2 Kaneohe

- Serves the freshest, seasonal dishes from Hawaii's local farmers and growers.

- Haleiwa Joe's \$\$\$

46-336 Haiku Rd Haiku Gardens Kaneohe

- Featuring fresh catches, locally grown produce, and quality steaks.

- Kono's \$\$

131 Hekili St Ste 102 Kailua

- Stop in for a quick grab-and-go meal, or sit and enjoy a casual dining experience served with extra aloha.

- Gyu-Kaku Japanese BBQ \$\$

95-1830 Meheula Pkwy Space C-12 and C-13 Mililani

- Gyu-Kaku offers a wide range of meats including the bestseller Harami Skirt Steak in Miso marinade, Certified Angus Kalbi Short Rib in Tare Soy marinade.

- Yamas Mediterranean Cuisine \$\$

1020 Keolu Dr Kailua

- The shop offers regular and super gyro which has lots of flavors and the garlic fries is cooked into perfection.

- The Hibachi \$\$

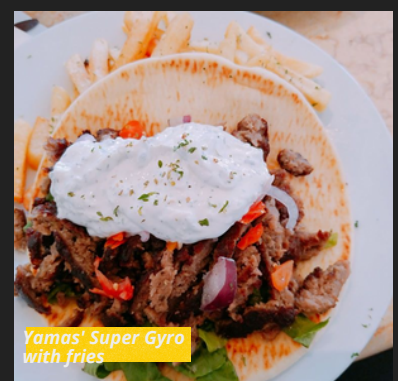
515 Kailua Rd Kailua

- Seves fresh Local Poke, Marinated Meats for Grilling, Speciality Wines, Beers and Spirits.

- Kizuna Japanese Sushi And Grill \$\$

45-934 Kamehameha Hwy Kaneohe

- A very good place if you crave for sushi. Fast service, delicious food and affordable.





# MUST TRY RESTAURANTS IN WIND WARD, OAHU



- Over Easy \$\$  
418 Kuulei Rd Ste 103 Kailua
  - The food is one of the best breakfast and brunch spots you will have on the island.
- Mokes bread and breakfast \$\$  
1127 11th Ave Ste 201 Honolulu
  - A great place to get breakfast! The portions are huge and were more than enough for my friend and me to share.



- Kalapawai Café & Deli \$\$  
750 Kailua Rd Kailua
  - Amazing food and beautiful sitting area out back. It has a small indoor area this place is a huge must try! The coffee was great and the pastries are a must!



- Cinnamon's Restaurant \$\$  
315 Uluniu St Kailua
  - The best place to go after your sunrise hike at Lanikai Pillboxes! Pro tip-if you order a full Benedict you can mix and match 2 different choices!!



- Buzz's Original Steak House \$\$  
Across the Kailua Beach Park, Kailua
  - A family owned steakhouse that has been a staple of Kailua since 1962 specializing in steaks and seafood

# MUST TRY RESTAURANTS IN WIND WARD, OAHU

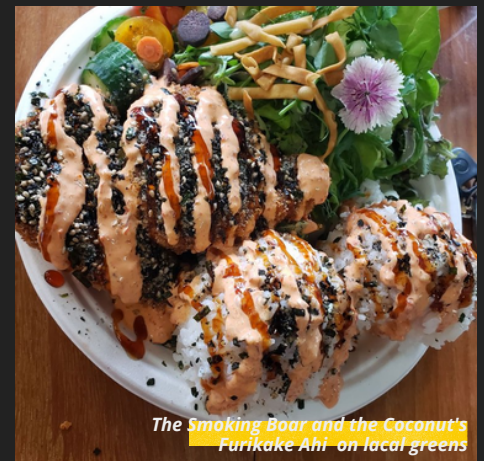
- Baci Bistro \$\$  
30 Aulike St Kailua
  - Offers a delightful menu described as European Cuisine with an Italian flair with delicious food, tasty desserts and fantastic customer service.
- Assaggio Italian Restaurant \$\$  
354 Uluniu St Ste 101 Kailua
  - One of the better Italian restaurants in Kailua especially for the good food and atmosphere.
- The Shack Kailua \$\$  
1051 Keolu Dr Kailua
  - one of the areas favorite destinations for lunch, dinner, late-night bites, cocktails, and fun!
- Nico's Kailua \$\$  
970 N Kalaheo Ave Kailua
  - It has such a great vibe, super nice staff, good views and epic food.
- Casablanca \$\$\$  
19 Hoolai St Kailua
  - Casablanca specializes in a prefix type menu, offering 5 courses at a set price per person.





# MUST TRY RESTAURANTS IN CENTRAL OAHU

- Maui Mike's Fire-Roasted Chicken \$\$  
96 S Kamehameha Hwy Wahiawa
  - Maui Mike's proudly serves FRESH natural premium chicken. No additives and nothing artificial.
- No7 Japanese Food Truck \$\$
  - Serves healthy Hawaiian poke and Japanese food in Haleiwa.
- Giovanni's Shrimp Truck \$\$
  - Try their famous shrimp scampi and also their hot & spicy shrimp cooked shell-on and smothered in a fiery hot tasty red sauce served with two scoops of rice
- Stonefish Grill \$\$
  - Serves fresh, locally and sustainably sourced (as much and whenever possible) worldly cuisine with local inspiration and throwbacks.
- Nalu Health Bar & Café \$\$
  - A local eatery in Haleiwa that has a beautiful atmosphere and delicious, healthy offerings.
- Wicked Hi Cafe \$
  - Serves all natural, raw, local honey and fresh pressed local fruit juices and slushies. They also offer pita, bagels, croissants, salads and pizza
- Surf N Salsa \$\$
  - Serves Mexican and Latin Cuisine cooked to order. They feature handmade corn tortillas, farm to table produce and housemade salsa.
- Ricardo's Italian Restaurant \$\$
  - It's a homey neighborhood Italian restaurant that serves large portions at reasonable everyday prices.



# MUST TRY RESTAURANTS IN WAIKIKI & HONOLULU



Ginza Bairin's  
Kurobuta Pork Loin Katsu



Hula Grill Waikiki's  
Hula Pie



Roy's Waikiki's  
Blackened Island Ahi



Marugame Udon's  
Curry Nikutama

- Duke's Waikiki \$\$  
2335 Kalakaua Ave Ste 116 Honolulu
  - Enjoy breakfast buffet on world's famous Waikiki Beach. It is also a perfect place for a sit down dinner or going out for dancing & drinks! They have a great patio with live music only a few steps from the beach.
- Ginza Bairin Tonkatsu & Yoshoku Bistro \$\$  
255 Beach Walk Honolulu
  - Honolulu's premier destination for authentic Japanese cuisine. They offer a variety of exciting plates for those who love the Western-influenced dishes that emerged during Japan's Meiji Restoration Period.
- Hula Grill Waikiki \$\$  
2335 Kalakaua Ave Ste 203 Honolulu
  - Offers a collection of local seafood, poultry and beef, fruits, vegetables and spices, with the local cultural techniques.
- Paia Fish Market Waikiki \$\$  
2299 Kuhio Ave Honolulu
  - Serves huge portions of fresh fish at reasonable prices.
- Roy's Waikiki \$\$\$  
226 Lewers St Honolulu
  - The food is excellent and the service is top-notch.
- Marugame Udon \$  
2310 Kuhio Ave Ste 124 Honolulu
  - Provides hand crafted udon bowls, tempura, and beverages from a theater kitchen, allowing guests to watch as their food is prepared.



- Ono Seafood \$\$

747 Kapahulu Ave Honolulu

- Offers traditional super ono ahi & tako poke; always fresh, premium ahi- never frozen! Made to order poke by the pound & poke bowls.



Ono Seafood Spicy and Hawaiian Style Ahi

- Moani Waikiki \$\$\$

2330 Kalakaua Ave Ste 312 Honolulu

- Offers a taste of Hawaii cuisine in a welcoming island style atmosphere. Enjoy great food, tasty drinks and live local music every night.



Moani Waikiki G Style Loco Moco

- Tikis Grill & Bar \$\$

570 Kalakaua Ave Honolulu

- Tiki's offers a variety of menu items including fresh fish, steaks and chicken for dinner, sandwiches and salads for lunch, and a wide range of pupu (appetizers) for the bar.



Tiki's Grill & Bar Seafood Risotto

- Tommy Bahama Restaurant & Bar \$\$\$

298 Beachwalk Dr Honolulu

- The menu features classic dishes in addition to a wide selection of traditional Hawaiian-inspired items incorporating locally sourced produce and seafood. Reservations are recommended.



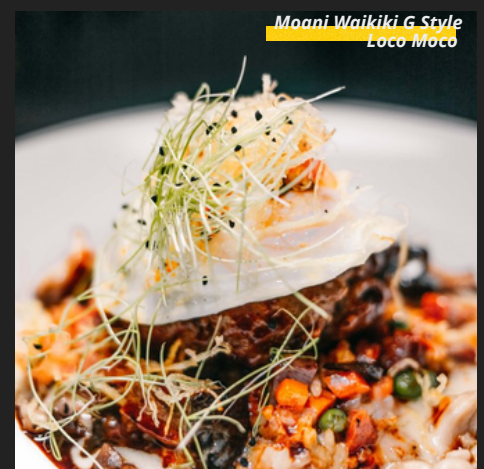
Tommy Bahama's Kona Coffee and Sugar Rubbed Rib-eye

- Yard House \$\$

226 Lewers St Waikiki

- A modern American gathering place where beer and food lovers unite. It is an upscale, casual eatery known for great food and classic rock music.

- XO Restaurant \$\$\$\$  
3434 Waialae Ave Ste 5 Honolulu
  - Offers delicious, Hawaiian inspired, upper-scale cuisine. Well worth the price, with a nice local feel.
- Helena's Hawaiian Food \$\$  
1240 N School St Honolulu
  - This family-owned business has been Serving traditional, local Hawaiian food since 1946.
- TsuruTonTan Udon Noodle Brasserie \$\$  
2233 Kalakaua Ave Ste B 310 Honolulu
  - If you like udon this place is awesome. The sukiyaki udon is amazing.
- Yakiniku Korea House \$\$  
2494 South Beretania St Honolulu
  - Cook your own meat right at the table. Authentic and full of flavor.
- Monsarrat Shave Ice \$  
3046 Monsarrat Ave Pioneer Saloon Honolulu
  - A place to go for shave ice. They have the best homemade syrups which are made from real ingredients and unique flavors!
- Frida's Hawaii \$\$  
91-1001 Kaimalie St Ewa Beach
  - Serves traditional Mexican food
- Nico's Pier 38 \$\$  
1129 N Nimitz Hwy Honolulu
  - A seafood restaurant located on the Pier, across Nimitz Center, that offers the freshest fish on the island as it is located next to the fish auction.



# OUR TEAM'S TOP PICKS



## NORTH SHORE

- Waialua Lunch Wagon \$\$
  - Straight up specializing in Ahi Only and Ahi Katsu
- The Smoking Boar and the Coconut \$\$
  - Well recommended by locals with fantastic food and vibe

## WAIKIKI/HONOLULU

- TsuruTonTan Udon Noodle Brasserie \$\$
  - if you like udon this place is awesome. The sukiyaki udon is amazing.
- Yakiniku Korea House \$\$
  - Cook your own meet right at the table. Authentic and full of flavor.
- Monsarrat Shave Ice \$
  - A place to go for shave ice. They have the best homemade syrups which are made from real ingredients and unique flavors!
- Frida's Hawaii, \$\$
  - Serves traditional Mexican food
- Ginza Bairin Tonkatsu & Yoshoku Bistro \$\$
  - Offers authentic Japanese cuisine.
- Nico's Pier 38, Honolulu \$\$
  - Fresh poke and fish with live music, indoor and outdoor seating

## WINDWARD

- Casablanca \$\$\$
  - We love the casual authentic Moroccan style with amazing taste.
- Haleiwa Joe's \$\$\$
  - It's like having dinner in a real rainforest. The biggest and tastiest prime rib I have ever had. It's one of their signature meals.

## LEEWARD

- Coquito's Latin Cuisine Restaurant \$\$
  - Puerto Rican restaurant serving authentic dishes
- Restaurant 604 \$\$
  - Local dishes with the best bloody mary, indoor/outdoor seating with views of the harbor
- Ono Thai \$\$
  - In the heart of Ewa Beach, authentic Thai food for dine-in or take out

## CENTRAL

- Ricardo's Italian Restaurant \$\$
  - Offers family Italian food style. Dine in or take out are welcome.





# USEFUL NUMBERS

## 911

- 9-1-1 – Serious medical problem, fire, life-threatening situation or crime in progress. Be aware of your location.
- 9-1-1 (text) – Only text 9-1-1 if you are unable to make a voice call.

## AGRICULTURAL INSPECTION

- (808) 861-8490
- <http://airports.hawaii.gov/hnl/flights/agriculture-inspection/>

## ANIMAL QUARANTINE

- (808) 483-7151
- email: [rabiesfree@hawaii.gov](mailto:rabiesfree@hawaii.gov)
- <https://hdoa.hawaii.gov/ai/aqs/aqs-info/>

## CAMPING PERMITS

- State Parks  
Phone: (808) 587-0300
- City & County of Honolulu Parks  
Phone: (808) 768-3003
- County of Kauai Parks  
Phone: (808) 241-4463
- County of Maui Parks  
Phone: (808) 270-7389
- County of Hawaii Parks  
Phone: (808) 961-8311

## HAWAII VISITORS AND CONVENTION BUREAU

- (808) 923-1811
- <https://www.hvcb.org/>

# OAHU POLICE DEPARTMENTS

- Honolulu Police Department - Kapolei Police Station  
1100 Kamokila Blvd, Kapolei, HI 96707  
Phone: (808) 723-8400
- Honolulu Police Department  
801 S Beretania St, Honolulu, HI 96813  
Phone: (808) 529-3111
- Honolulu Police Department - Kaneohe Police Station  
45-270 Waikalua Rd, Kaneohe, HI 96744  
Phone: (808) 723-8640
- Honolulu Police Department Kalihi Police Station  
1865 Kamehameha IV Rd, Honolulu, HI 96819  
Phone: (808) 723-8207
- Honolulu Police Department - Pearl City Police Station  
1100 Waimano Home Rd, Pearl City, HI 96782  
Phone: (808) 529-3111
- Honolulu Police Department - Wahiawa Police Station  
330 N Cane St, Wahiawa, HI 96786  
Phone: (808) 723-8700
- Honolulu Police Department Kailua Substation  
219 Kuulei Rd, Kailua, HI 96734  
Phone: (808) 723-8838
- Honolulu Police Department Waikiki Station  
2425 Kalakaua Ave, Honolulu, HI 96815  
Phone: (808) 529-3801
- Schofield Barracks MP Station  
Lyman Rd, Schofield Barracks, HI 96857  
Phone: (808) 655-7114
- Sheriffs Division-Public Safety  
Hawaii State Capitol, 415 S Beretania St, Honolulu, HI 96813  
Phone: (808) 586-1352
- Sheriffs Division-Patrol Units  
777 Punchbowl St, Honolulu, HI 96813  
Phone: (808) 539-4599
- State of Hawaii Department of Public Safety - Sheriff Division  
240 Keawe St, Honolulu, HI 96813  
Phone: (808) 808-587-3632
- Kahuku Police Station  
56-470 Kamehameha Hwy, Kahuku, HI 96731  
Phone: (808) 723-8650
- Honolulu Police Commission  
1060 Richards St, Honolulu, HI 96813  
Phone: (808) 723-7580
- Honolulu Police Administrative  
801 S Beretania St, Honolulu, HI 96813  
Phone: (808) 529-3175
- State of Hawaii Sheriff Division Warrants Section  
240 Keawe St, Honolulu, HI 96813  
Phone: (808) 587-3632
- Honolulu Police Training Academy  
93-093 Waipahu Depot St, Waipahu, HI 96797  
Phone: (808) 677-1474
- Wai'anae Police Station  
85-939 Farrington Hwy, Waianae, HI 96792  
Phone: (808) 723-8600

# MAIN HOSPITALS IN OAHU

## NORTHSHORE

- Kahuku Medical Center  
56-117 Pualalea St Kahuku  
Phone: (808) 293-9221  
[www.kmc-hi.org](http://www.kmc-hi.org)  
Open 24 hours

## WINDWARD

- Wahiawa General Hospital  
128 Lehua St Wahiawa  
Phone: (808) 621-8411  
[www.wahiawageneral.org](http://www.wahiawageneral.org)  
Open 24 hours
- Adventist Health Castle  
640 Ulukahiki St Adventist  
Health Kailua  
Phone: (808) 263-5500  
<https://www.adventisthealth.org/castle/>  
Open 24 hours
- Hawaii State Hospital  
45-710 Keaahala Rd Kaneohe  
Phone: (808) 247-2191  
<https://health.hawaii.gov/amhd/hawaii-state-hospital-about-us/>  
Services: Counseling & Mental Health

## LEEWARD

- The Queen's Medical Center -  
West O'ahu  
91-2141 Fort Weaver Rd Ewa Beach  
Phone: (808) 691-3000  
<http://queensmedicalcenter.org/westoahu>  
Open 24 hours
- Pali Momi Medical Center  
98-1079 Moanalua Rd Aiea,  
Phone: (808) 486-6000  
<https://www.hawaiiipacifichealth.org/pali-momi>  
Services: Ophthalmologists,  
Diagnostic Imaging, Obstetricians &  
Gynecologists  
Open 24 hours

## CENTRAL

- Wahiawa General Hospital  
128 Lehua St Wahiawa  
Phone: (808) 621-8411  
[www.wahiawageneral.org](http://www.wahiawageneral.org)  
Open 24 hours



# MAIN HOSPITALS IN OAHU

## HONOLULU

- Kaiser Permanente Moanalua Medical Center  
3288 Moanalua Rd Honolulu  
Phone: (808) 432-2000  
<http://kaiserpermanente.org>  
Open: 8:30 AM - 5:00 PM
- Kapiolani Medical Center  
1319 Punahou St Honolulu  
Phone: (808) 983-6000  
<https://www.hawaiiipacifichealth.org/kapiolani/locations/kapiolani-medical-center/>  
Services: Obstetricians & Gynecologists, Pediatricians, Medical Centers  
Open: 24 hours
- Tripler Army Medical Center  
1 Jarrett White Rd Honolulu  
Phone: (808) 433-6661  
<http://www.tamc.amedd.army.mil>  
Open: 24 hours
- Straub Medical Center - Doctors on Call - Sheraton Waikiki  
2255 Kalakaua Ave Manor Wing 1  
Phone: (808) 971-6000  
<https://www.hawaiiipacifichealth.org/straub/locations/straub-doctors-on-call-sheraton-waikiki/>  
Open: 7:00 AM - 11:00 PM
- Straub Medical Center  
888 S King St Honolulu, HI 96813  
Phone: (808) 522-4000  
<https://www.hawaiiipacifichealth.org/straub/>  
Services: Urgent Care, Walk-in Clinics  
Open: 24 hours
- The Queen's Medical Center  
1301 Punchbowl St Honolulu  
Phone: (808) 691-1000  
Open: 24 hours
- Leahi Hospital  
3675 Kilauea Ave Honolulu  
Phone: (808) 733-8000  
<http://www.kch.hhsc.org>  
Open: 24 hours
- Kuakini Medical Center  
347 N Kuakini St Honolulu  
Phone: (808) 536-2236  
<https://www.kuakini.org>  
Open: 24 hours
- Shriners Hospitals for Children  
1310 Punahou St Honolulu  
Phone: (808) 941-4466  
<https://www.shrinershospitalsforchildren.org/honolulu>  
Services: Pediatricians, Orthopedists  
Open: M-F, 8:00 AM - 4:30 PM

# ADDITIONAL CLINICS IN OAHU

## CENTRAL

- Access Medical Clinics  
95-1249 Meheula Pkwy Ste D  
Phone: (808) 627-0330  
<http://www.accessmedicalclinics.com>  
Open: M-F, 9:00 AM - 6:00 PM  
Sat-Sun, 9:00 AM - 1:00 PM
- Straub Medical Center - Mililani Town Center Clinic  
95-1249 Meheula Pkwy Unit 187 Mililani  
Phone: (808) 625-6444  
<https://www.hawaiiapacifichealth.org/straub/locations/straub-medical-center-mililani-clinic/>  
Open: M-F, 7:30 AM - 5:00 PM
- All Access Ortho Mililani  
95-1830 Meheula Pkwy Ste C 10 & 11 Mililani  
Phone: (808) 356-5699  
<http://www.allaccessortho.com>  
Services: Orthopedists, Urgent Care, Sports Medicine  
Open: 24 hours
- Brian Kehoe, PhD  
99-128 Aiea Heights Rd Ste 704 Aiea  
Phone: (808) 542-9599  
<https://www.drbriankehoe.com/>  
Services: Counselling & Mental Health  
Open: M-F, 8:00 AM - 6:00 PM

## HONOLULU

- Ketamine Clinic  
500 Ala Moana Blvd Unit No 4-470  
Phone: (808) 522-4000  
<https://www.hawaiiapacifichealth.org/straub/>  
Services: Pain Management  
Open: M-F, 9:00 AM - 5:00 PM  
Saturday, 9:00 AM - 1:00 PM
- The Ferguson Clinic  
677 Ala Moana Blvd Ste 1011 Honolulu  
Phone: (808) 521-1999  
<https://thefergusonclinic.com>  
Services: Medical Centers, Cosmetic Surgeons  
Open: M-F, 8:00 AM - 5:00 PM
- Hawaii Women's Clinic  
1010 S King St Ste 604 Honolulu  
Phone: (808) 852-8535  
<http://hawaiiwomensclinic.com/>  
Open: M-F, 8:00 AM - 1:00 PM
- Open Door Urgent Care Clinic  
1441 Kapiolani Blvd Ste 608 Honolulu  
Phone: (808) 781-8046  
Open: M-F, 8:30 AM - 4:00 PM  
Saturday, 8:30 AM - 12:00 PM
- Mililani Town Center Pet Clinic  
95-1099 Ainamakua Dr Ste 2 Mililani  
Phone: (808) 625-6744  
<https://www.mtcpetclinic.com>  
Open: M-F, 8:00 AM - 6:00 PM  
Saturday, 7:30 AM - 3:00 PM

# ALL HAWAIIAN ISLANDS AIRPORTS

- **Kauai Airports**  
Lihue Airport  
<http://airports.hawaii.gov/lih/>  
Phone: (808) 274-3800
- **Oahu Airports**  
Daniel K. Inouye International Airport  
(formerly Honolulu International Airport) (HNL)  
<http://airports.hawaii.gov/hnl/>  
Phone: (808) 836-6413
- **Molokai Airports**  
Molokai Airport  
<http://airports.hawaii.gov/mkk/>  
Phone: (808) 274-3800  
  
Kalaupapa Airport  
<http://airports.hawaii.gov/lup/>  
Phone: (808) 838-8701
- **Lanai Airport (LNY)**  
<http://airports.hawaii.gov/lny/>  
Phone: (808) 565-7942
- **Hana Airport (HNM)**  
<http://airports.hawaii.gov/hnm/>  
Phone: (808) 248-4861
- **Kahului Airport (OGG)**  
<http://airports.hawaii.gov/ogg/>  
Phone: (808) 872-3830
- **Island of Hawaii Airports**  
Hilo International Airport (ITO)  
<http://airports.hawaii.gov/ito/>  
Phone: (808) 961-9300  
  
Ellison Onizuka Kona International Airport (KOA)  
<http://airports.hawaii.gov/koa/>  
Phone: (808) 327-9520





## MARRIAGE LICENSES AND CIVIL UNIONS

- Marriage Licenses  
<https://health.hawaii.gov/vitalrecords/marriage-licenses/>
- Civil Unions  
<https://health.hawaii.gov/vitalrecords/about-civil-unions/>  
Phone: (808) 586-4545

## OFFICE OF CONSUMER PROTECTION

- [hawaii.gov/dcca/ocp/contact/](https://hawaii.gov/dcca/ocp/contact/)  
Oahu: (808) 587-3222 (press 2 at the menu)

## TRANSPORTATION AND SECURITY ADMINISTRATION (TSA)

- <https://www.tsa.gov/travel>  
Phone: (866) 289-9673  
Email: [contactcenter@dhs.gov](mailto:contactcenter@dhs.gov)

## WEATHER AND SURF REPORTS

- National Weather Service Forecast Office - Hawaii  
Phone: (808) 973-5286