

PINE MEADOW HOME PLAN



Builder reserves the right to make changes in Frank Betz home plans to accommodate details of current Fox Creek Subdivision Phase II requirements.

Exterior : 4 sided brick construction with tasteful painted accents in front gables & dormers, Irrigation system, 6" aluminum gutters, Concrete drives & walks, Professional landscape package; front lawns will be sodded, sides & back will be seed and straw; front plant beds.

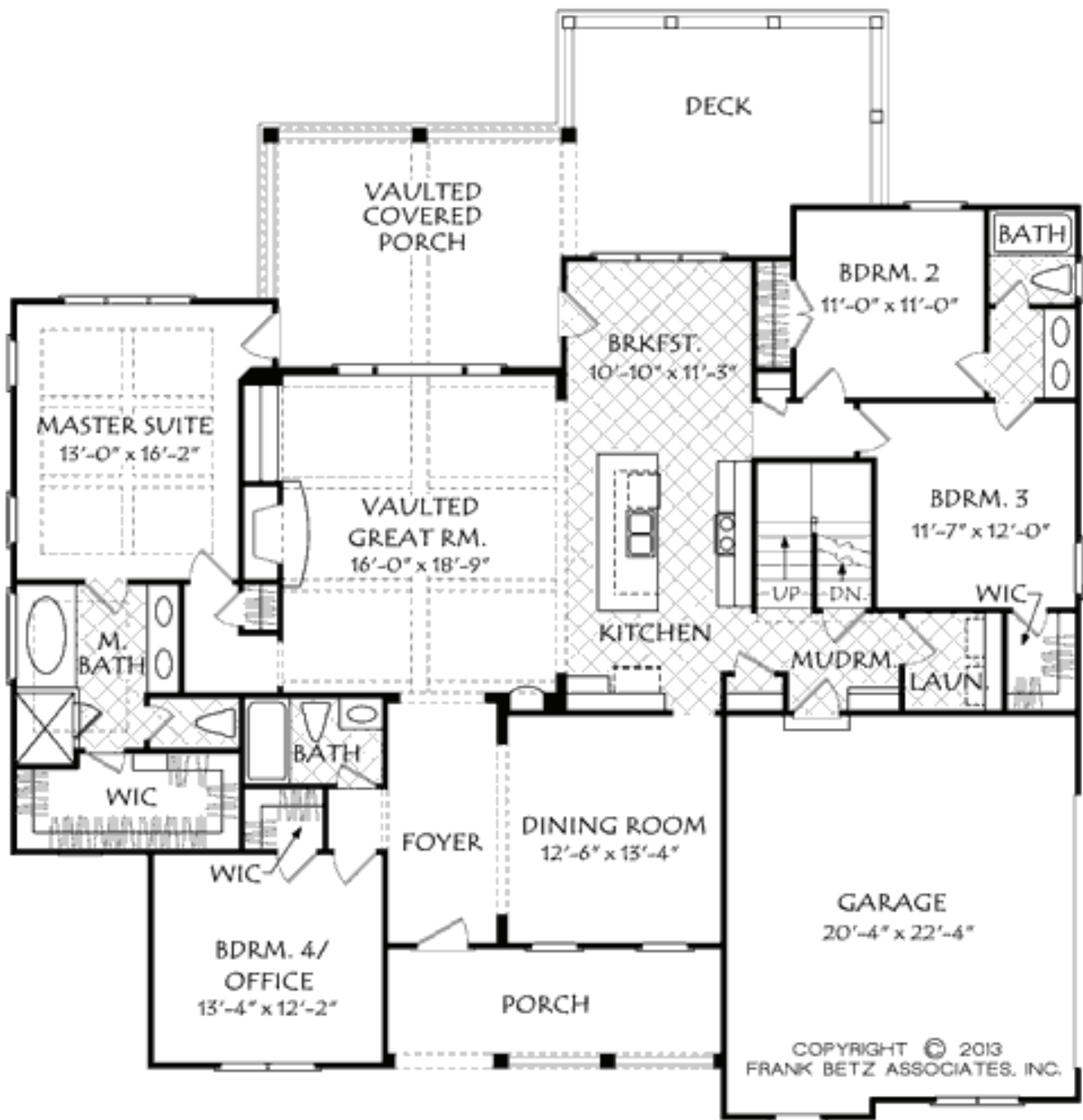
Construction Features : Main level master bedroom, 9' foot ceilings on main level, Energy efficient double pane vinyl windows, Fiberglass insulation equivalents of Attic R-30, walls R-13, Drywall with rounded corners and knock down/smooth ceilings & wall combinations, Dimensional 25 year shingle roofs, Termite treatment protection

Mechanical Systems : Energy efficient gas heat & central air conditioning on main level, Separate heat pumps on second level, 50 gallon electric hot water heater

Plumbing Features : Whirlpool tub in master bath, Tiled shower with glass door in master bath, Delta faucets on tubs & sinks, Double stainless steel sink in kitchen with garbage disposal, Fiberglass tub & shower combinations on second floor

Design Features : Elegant lighting package, Santa Fe 2-panel interior doors, Heritage cabinetry with maple, cherry & painted finishes (42" wall cabinets in kitchen), Crown molding throughout main level, Closet Maid shelving systems, Gas log fireplace inset with tile hearth & surround, Custom built painted mantel, Hardwood in foyer, dining room & great room *Hand scraped hardwood flooring 5" wide in Maple, Marmont, Chambord, Encalyptus, Tile in kitchen/breakfast area, baths & laundry room, Frieze or trackless carpet with 8 lb. padding, Oil rubbed bronze or nickel finish door hardware, High quality Pittsburgh paint, Coachman style garage doors with windows, Quiet operating garage door opener, Granite counter tops in kitchen & baths, Stainless steel gas or electric range/oven, Stainless steel microwave & dishwasher, Brick mailboxes

Builder Service Features: One year builder's warranty



FIRST FLOOR PLAN

1ST FLOOR 2207 SQ. FT.
2ND FLOOR 470 SQ. FT.
TOTAL 2,677 SQ. FT

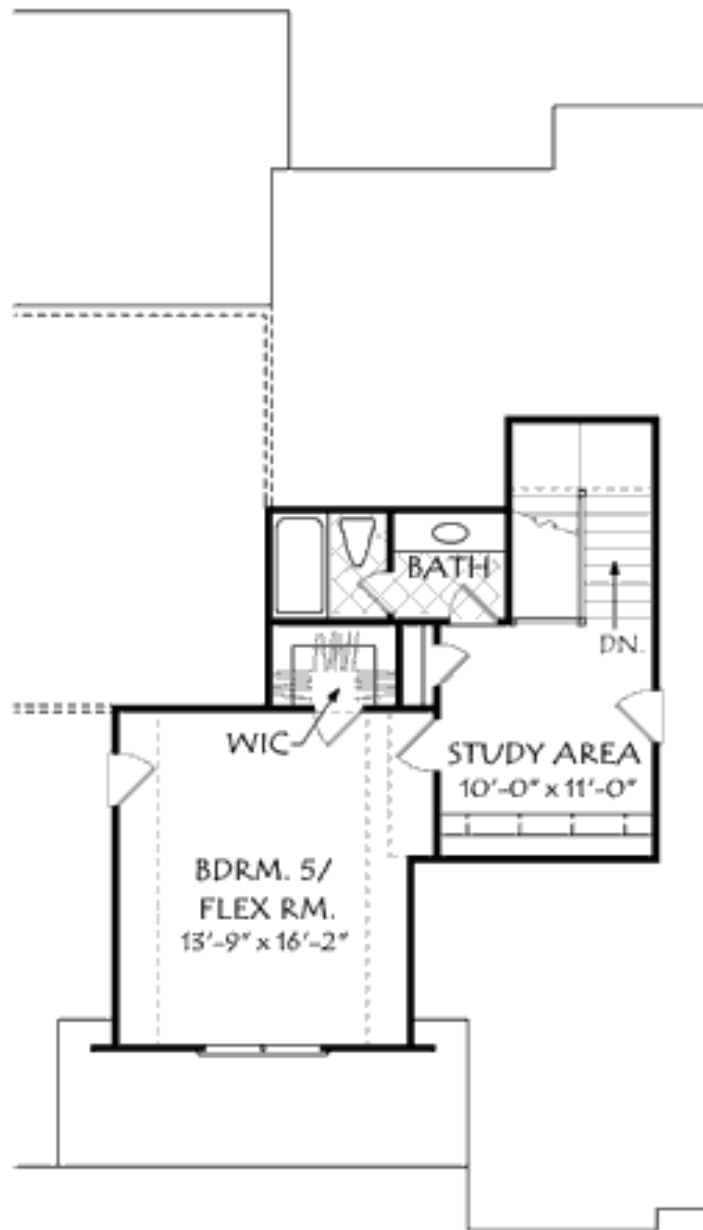
Estimated square footage

WWW.BILLYHOUSTONGROUP.COM

109 S. NORTHSORE DR, STE 201
(865) 207-1212 (CELL)
INFO@BILLYHOUSTONGROUP.COM

BILLY HOUSTON
REALTOR®





SECOND FLOOR PLAN

WWW.BILLYHOUSTONGROUP.COM

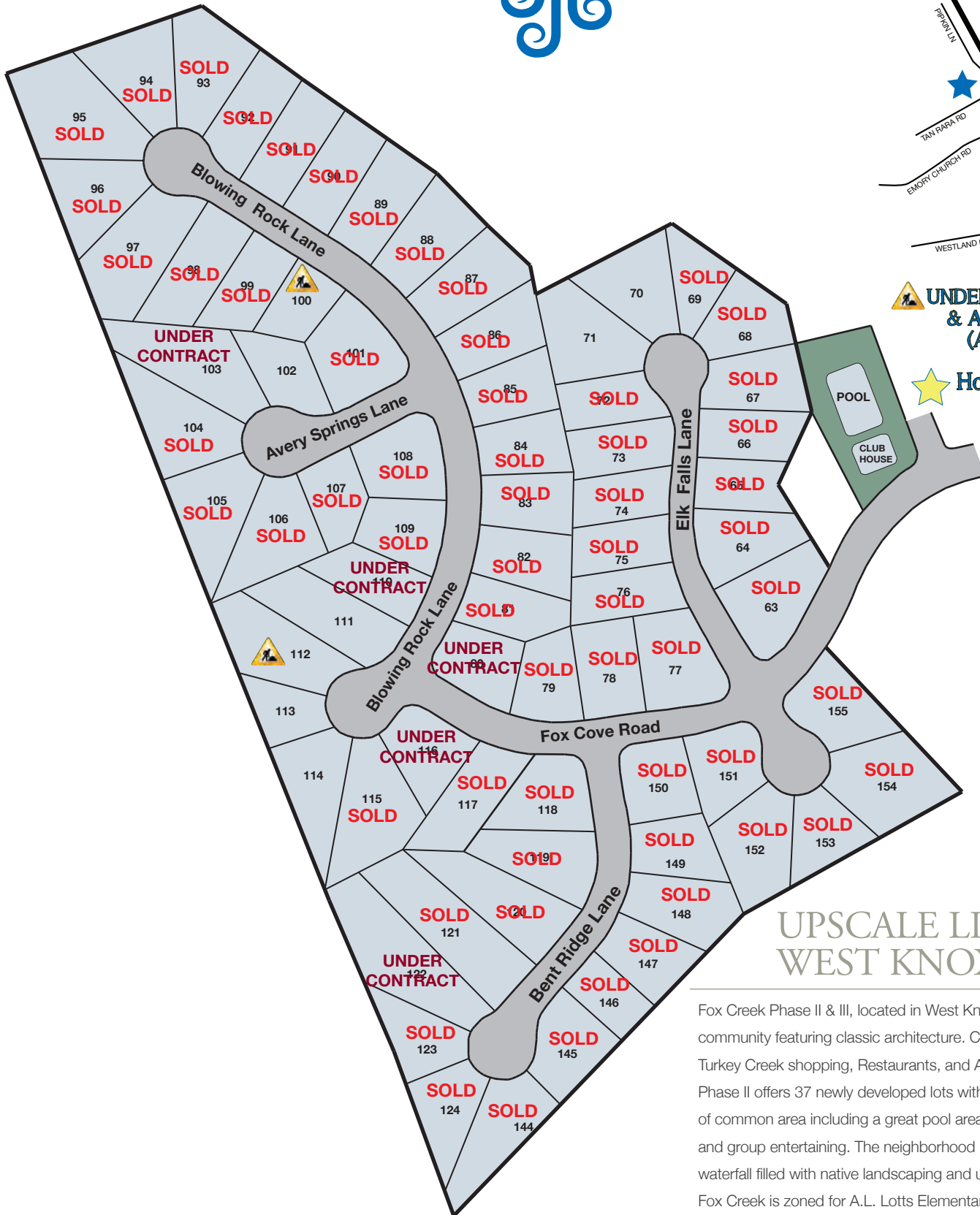
109 S. NORTSHORE DR, STE 201
(865) 207-1212 (CELL)
INFO@BILLYHOUSTONGROUP.COM

BILLY HOUSTON
REALTOR®



FOX CREEK

WWW.FOXCREEKSUBDIVISION.COM



UNDER CONSTRUCTION & Available For Sale (Active on MLS)

Home Available For Sale

UPSCALE LIVING IN WEST KNOXVILLE.

Fox Creek Phase II & III, located in West Knoxville, offers an upscale community featuring classic architecture. Conveniently located to Turkey Creek shopping, Restaurants, and Airport. Fox Creek Phase II offers 37 newly developed lots with approximately 8 acres of common area including a great pool area designed for families and group entertaining. The neighborhood presents a beautiful stone waterfall filled with native landscaping and upscale street signage. Fox Creek is zoned for A.L. Lotts Elementary, West Valley Middle and Farragut High Schools.



BILLY HOUSTON
REALTY EXECUTIVES *Group*



For more information,
call Billy Houston at (865) 577.7653
or Robert Phillips at (865) 694-4494.