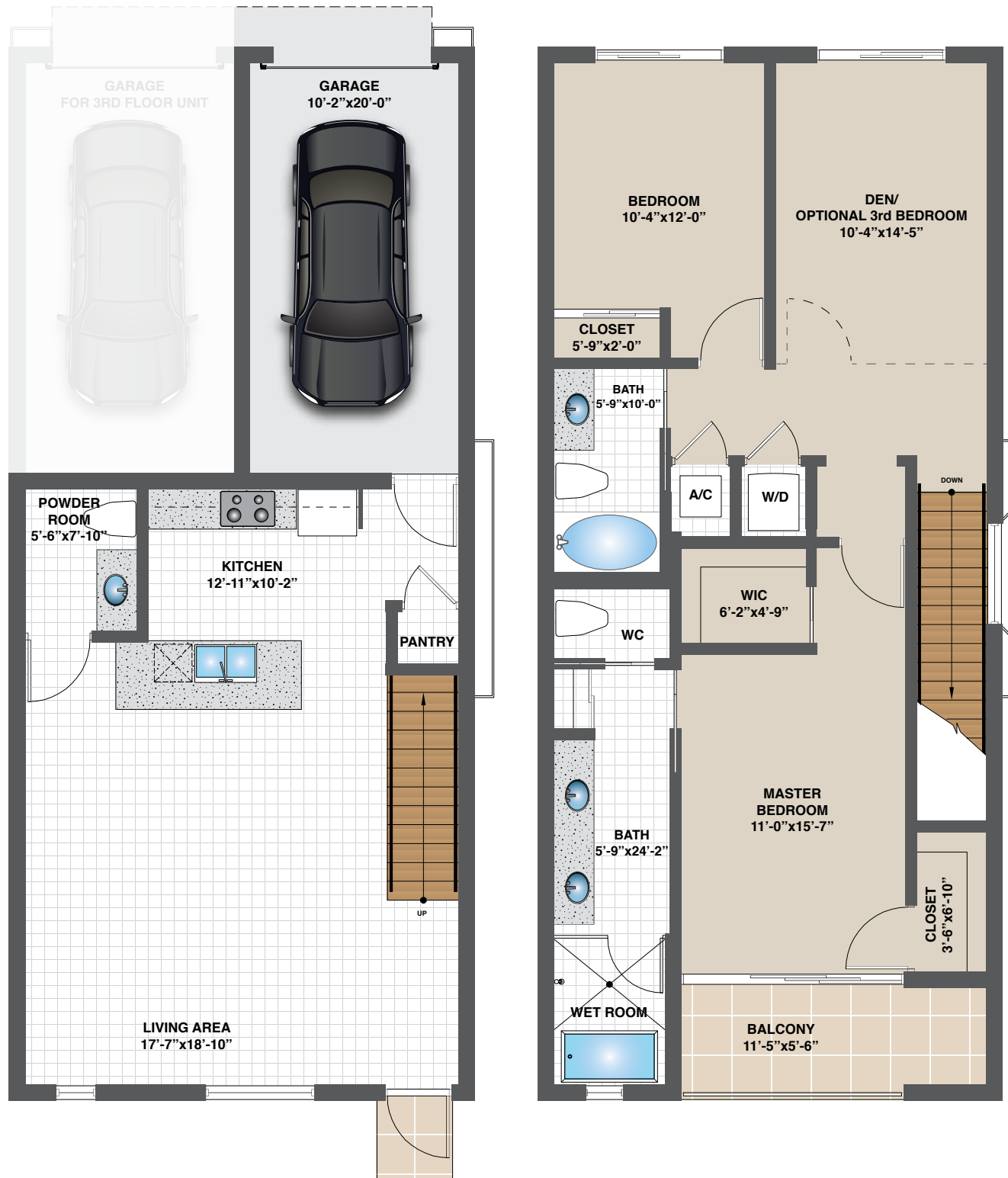


MODEL A - EAST

2 Bedroom, 2.5 Bath
Den/Bedroom Option + Garage

1,789 A/C sq. ft.
2,110 Total sq. ft.

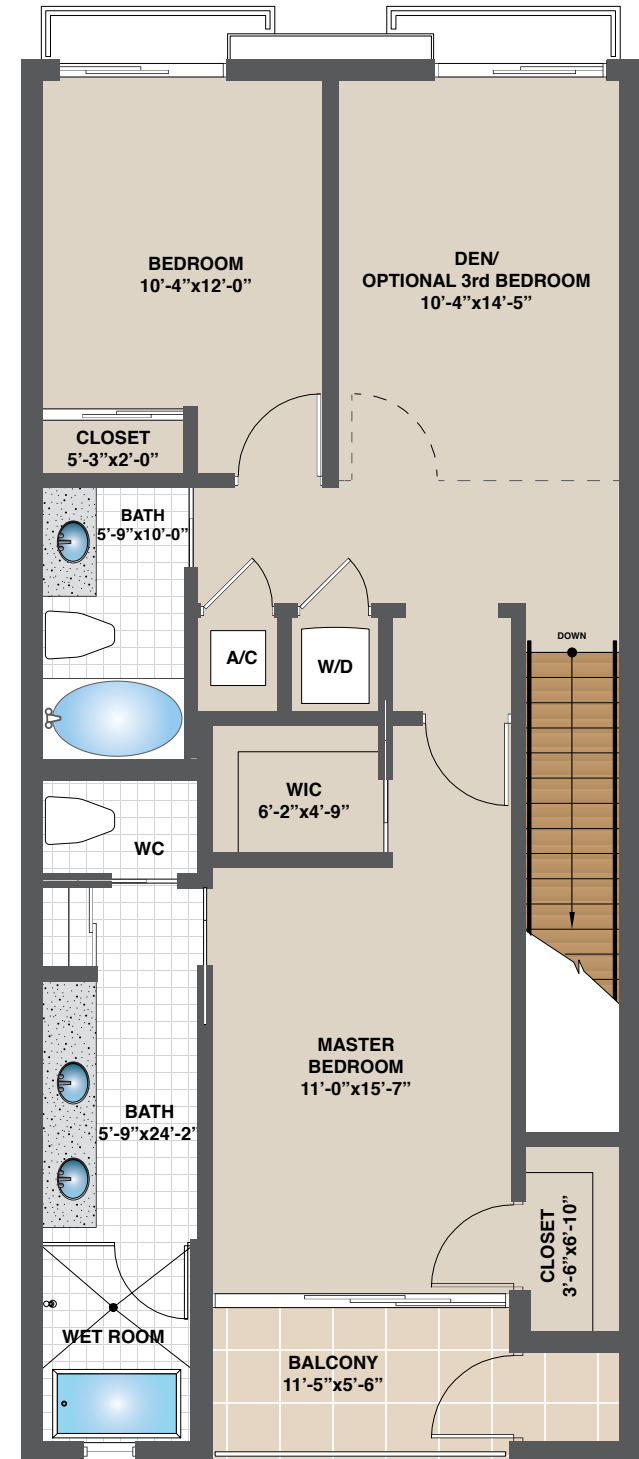
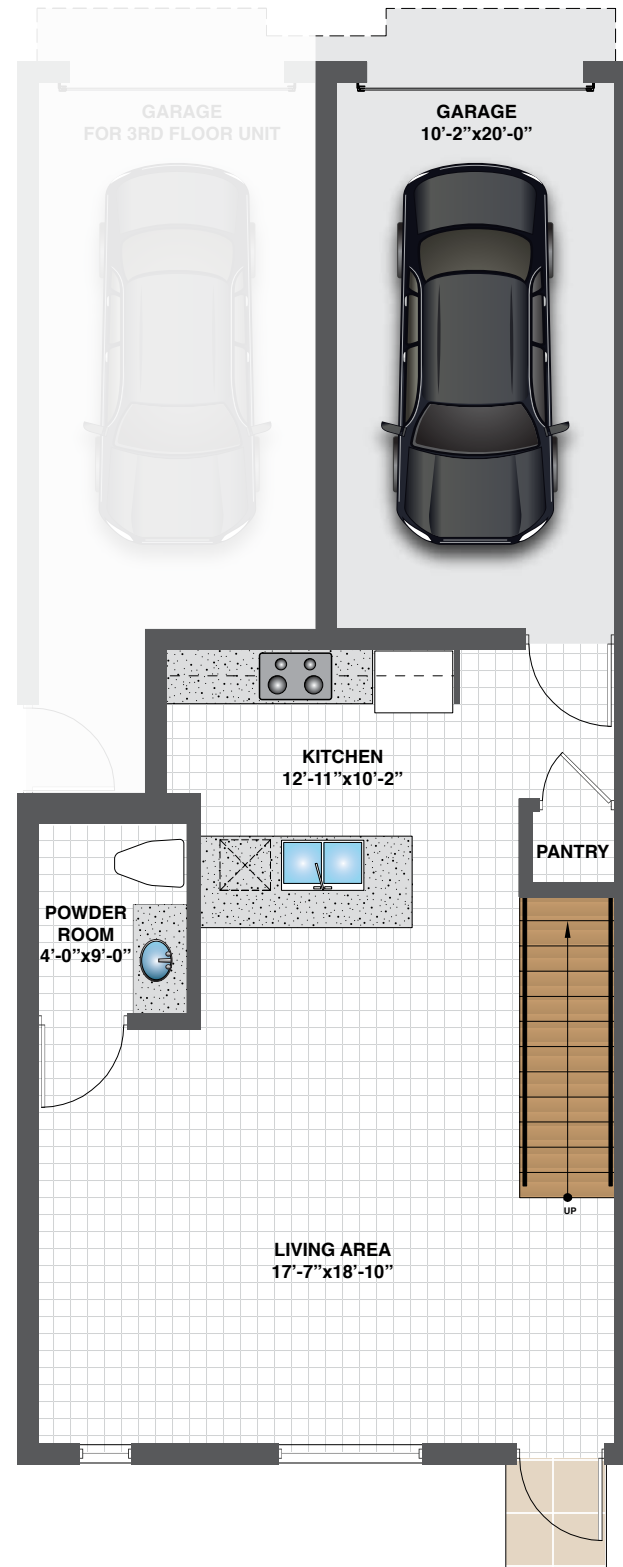


Stated square footages and dimensions of units are based on measurements to the exterior boundaries of the exterior walls and the centerline of interior demising walls between units and will vary from the square footages and dimensions of the unit that would be determined by using the description and definition of the "Unit" set forth in the Declaration (which generally only includes the interior airspace between the perimeter walls and excludes interior structural components and other common elements). This method of measurement is generally used in sales and marketing materials and is provided to allow a prospective buyer to compare the Units with 3 units in other condominium projects that utilize the same method. For your reference, the square footage of the Unit, determined in accordance with the definition of the "Unit" set forth in the Declaration, is + or - _____ sq. ft. for unit type _____. Terraces, patios, balconies, yards and private garages are not part of the "Unit". Measurements and dimensions of rooms set forth on this floor plan are generally taken at the farthest points of each given room (as if the room were a perfect rectangle), without regard for any cutouts, soffits or other variations. Accordingly, the square footage of the actual room will typically be smaller than the product obtained by multiplying the stated length times width. All square footages, dimensions and measurements are estimates which are based on preliminary plans and will vary with actual construction. All floor plans, specifications and other development plans are proposed and conceptual only, and are subject to change and will not necessarily accurately reflect the final plans and specifications.

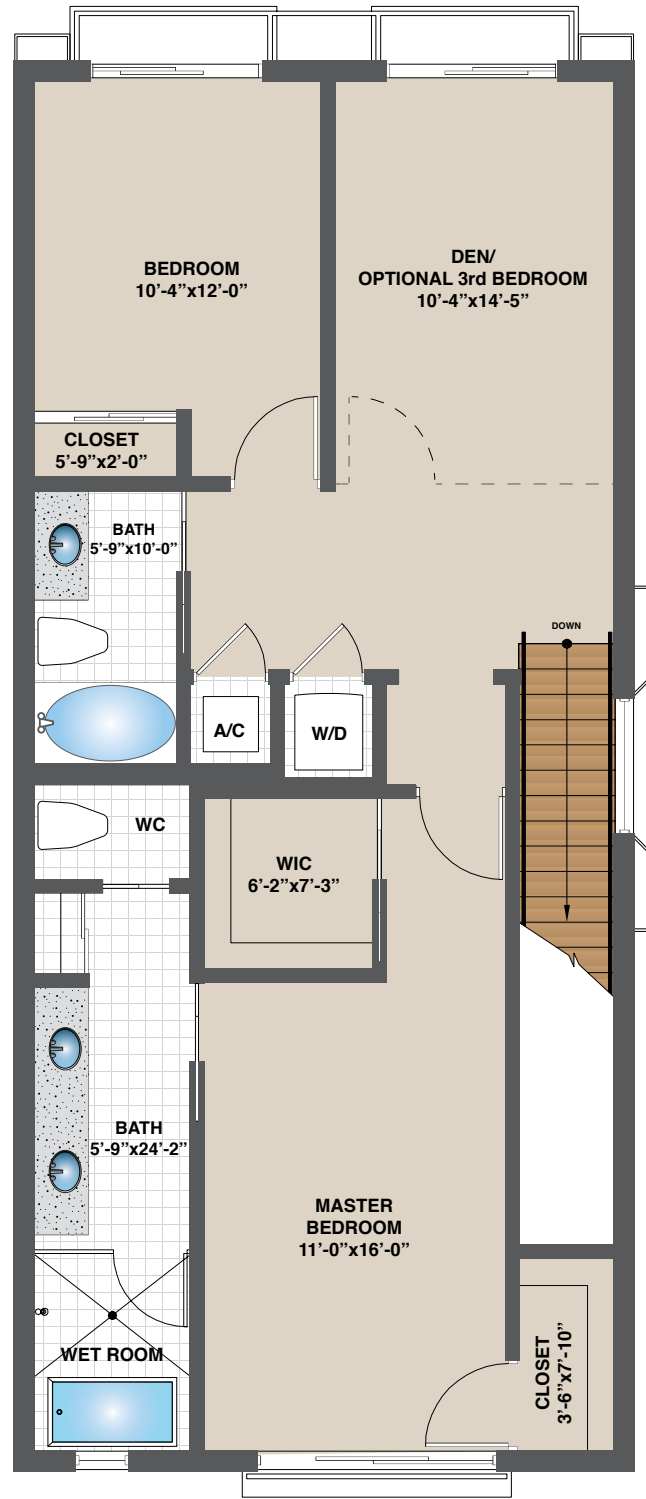
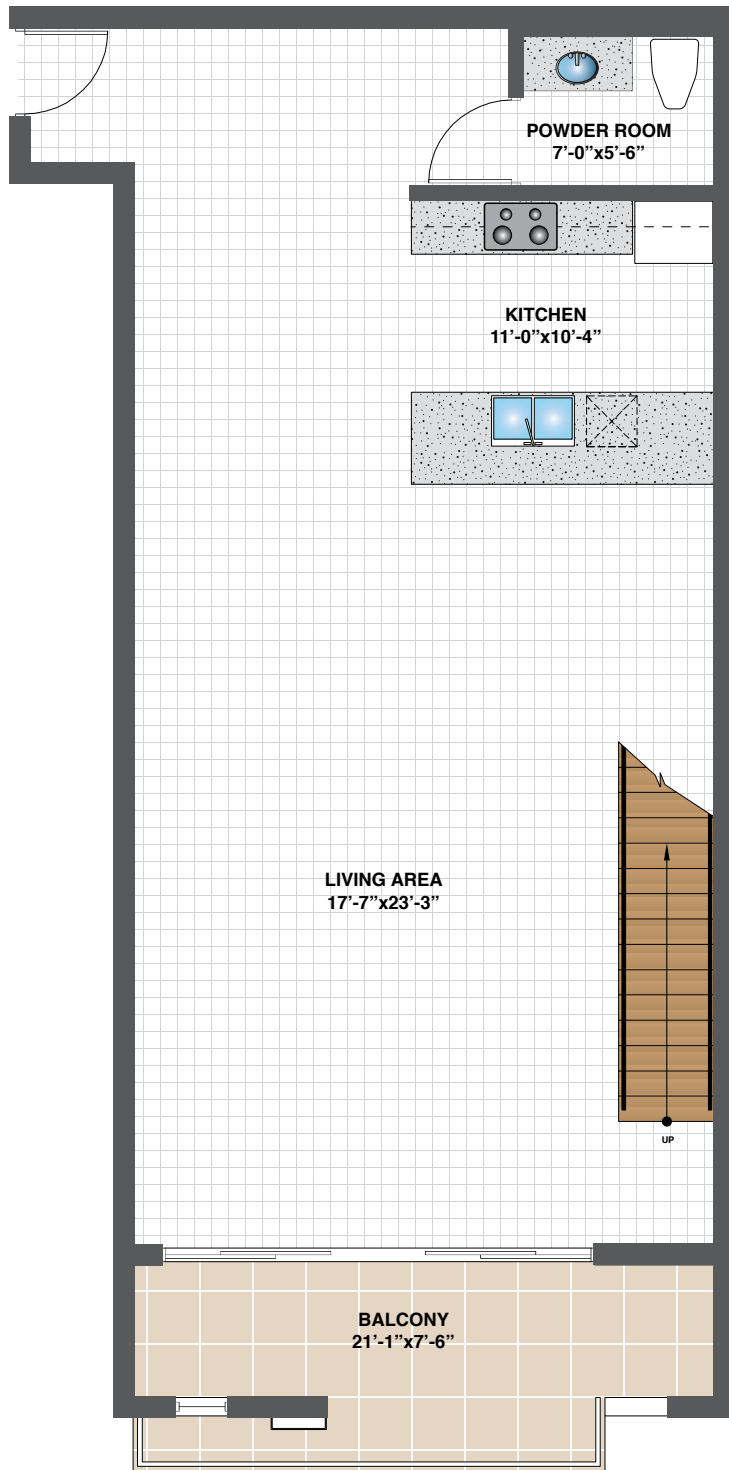
MODEL B - EAST

2 Bedroom, 2.5 Bath
Den/Bedroom Option + Garage

1,734 A/C sq. ft.
2,040 Total sq. ft.



Stated square footages and dimensions of units are based on measurements to the exterior boundaries of the exterior walls and the centerline of interior demising walls between units and will vary from the square footages and dimensions of the unit that would be determined by using the description and definition of the "Unit" set forth in the Declaration (which generally only includes the interior airspace between the perimeter walls and excludes interior structural components and other common elements). This method of measurement is generally used in sales and marketing materials and is provided to allow a prospective buyer to compare the Units with 3 units in other condominium projects that utilize the same method. For your reference, the square footage of the Unit, determined in accordance with the definition of the "Unit" set forth in the Declaration, is + or - _____ sq. ft. for unit type _____. Terraces, patios, balconies, yards and private garages are not part of the "Unit". Measurements and dimensions of rooms set forth on this floor plan are generally taken at the farthest points of each given room (as if the room were a perfect rectangle), without regard for any cutouts, soffits or other variations. Accordingly, the square footage of the actual room will typically be smaller than the product obtained by multiplying the stated length times width. All square footages, dimensions and measurements are estimates which are based on preliminary plans and will vary with actual construction. All floor plans, specifications and other development plans are proposed and conceptual only, and are subject to change and will not necessarily accurately reflect the final plans and specifications.



MODEL C - EAST

2 Bedroom, 2.5 Bath
Den/Bedroom Option + Garage

2,156 A/C sq. ft.
2,505 Total sq. ft.

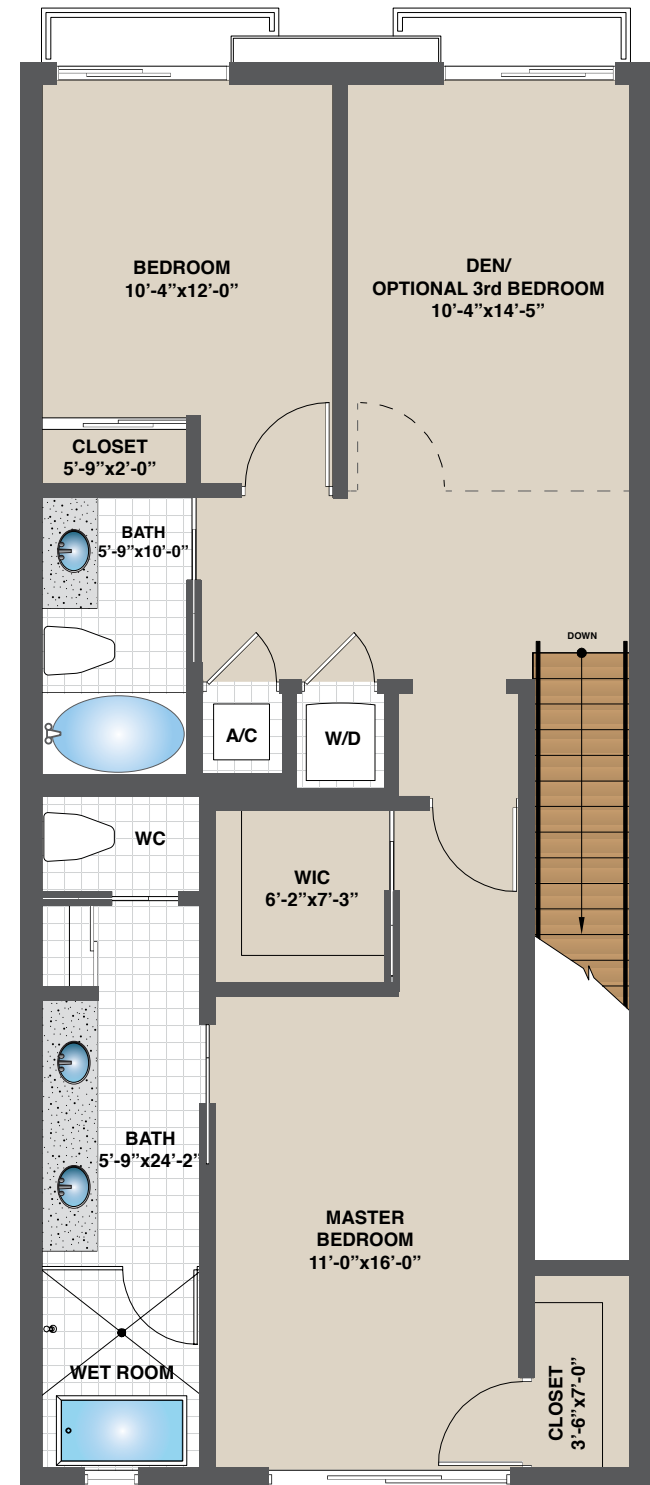
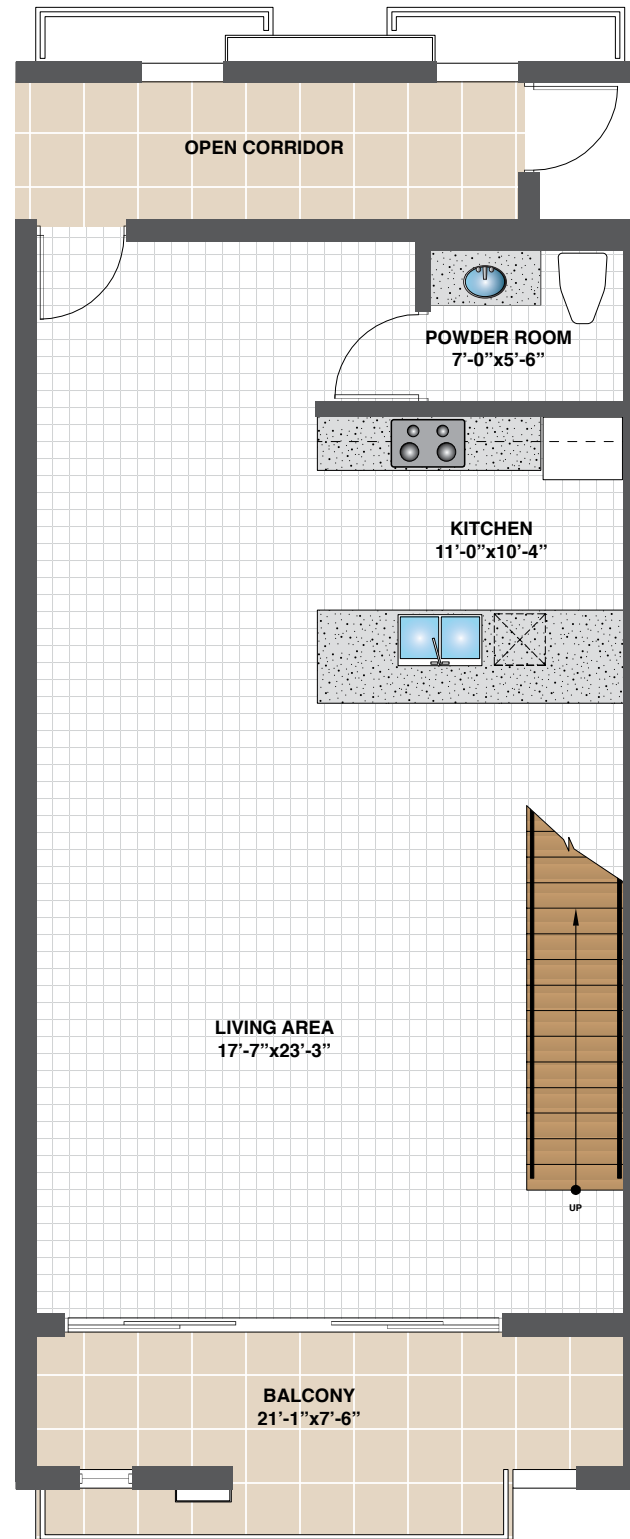


Stated square footages and dimensions of units are based on measurements to the exterior boundaries of the exterior walls and the centerline of interior demising walls between units and will vary from the square footages and dimensions of the unit that would be determined by using the description and definition of the "Unit" set forth in the Declaration (which generally only includes the interior airspace between the perimeter walls and excludes interior structural components and other common elements). This method of measurement is generally used in sales and marketing materials and is provided to allow a prospective buyer to compare the Units with 3 units in other condominium projects that utilize the same method. For your reference, the square footage of the Unit, determined in accordance with the definition of the "Unit" set forth in the Declaration, is + or - _____ sq. ft. for unit type _____. Terraces, patios, balconies, yards and private garages are not part of the "Unit". Measurements and dimensions of rooms set forth on this floor plan are generally taken at the farthest points of each given room (as if the room were a perfect rectangle), without regard for any cutouts, soffits or other variations. Accordingly, the square footage of the actual room will typically be smaller than the product obtained by multiplying the stated length times width. All square footages, dimensions and measurements are estimates which are based on preliminary plans and will vary with actual construction. All floor plans, specifications and other development plans are proposed and conceptual only, and are subject to change and will not necessarily accurately reflect the final plans and specifications.

MODEL D - EAST

2 Bedroom, 2.5 Bath
Den/Bedroom Option + Garage

1,975 A/C sq. ft.
2,349 Total sq. ft.

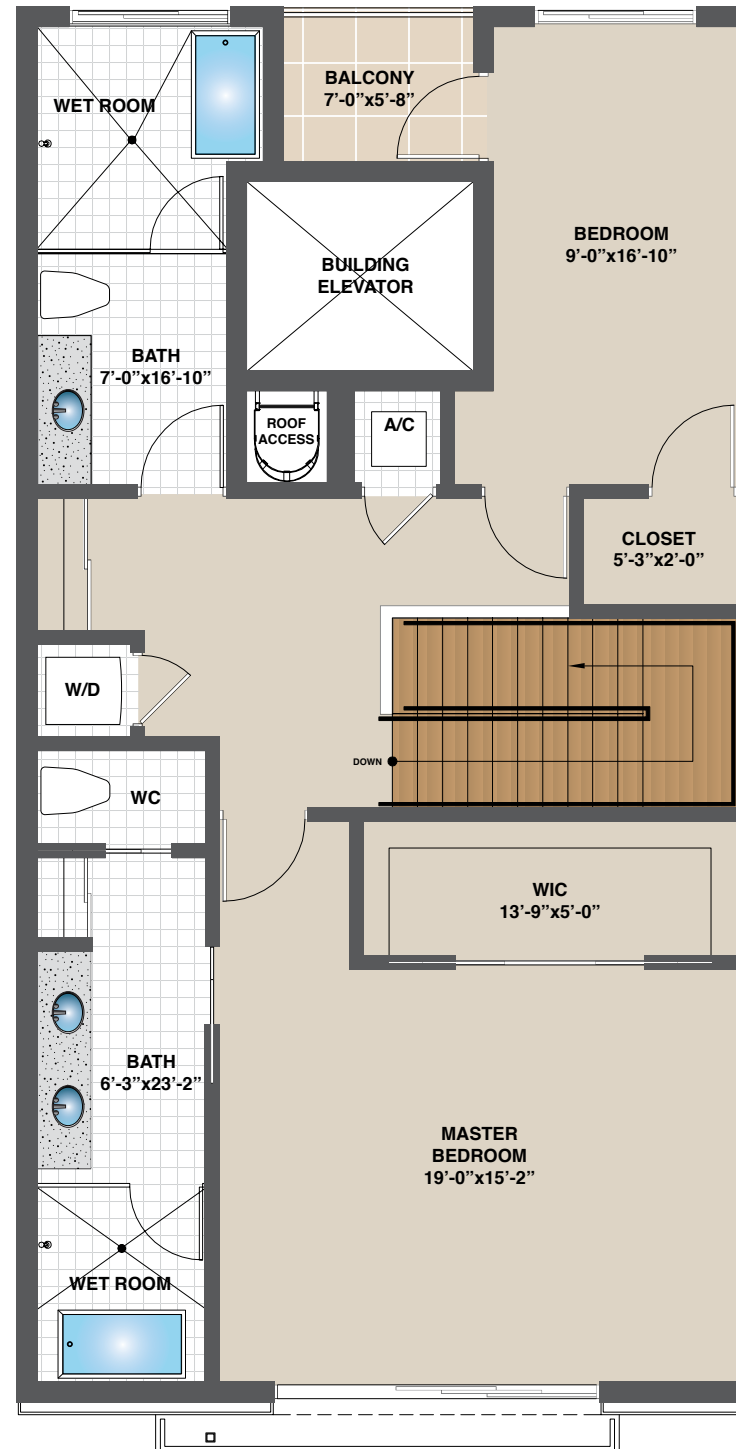
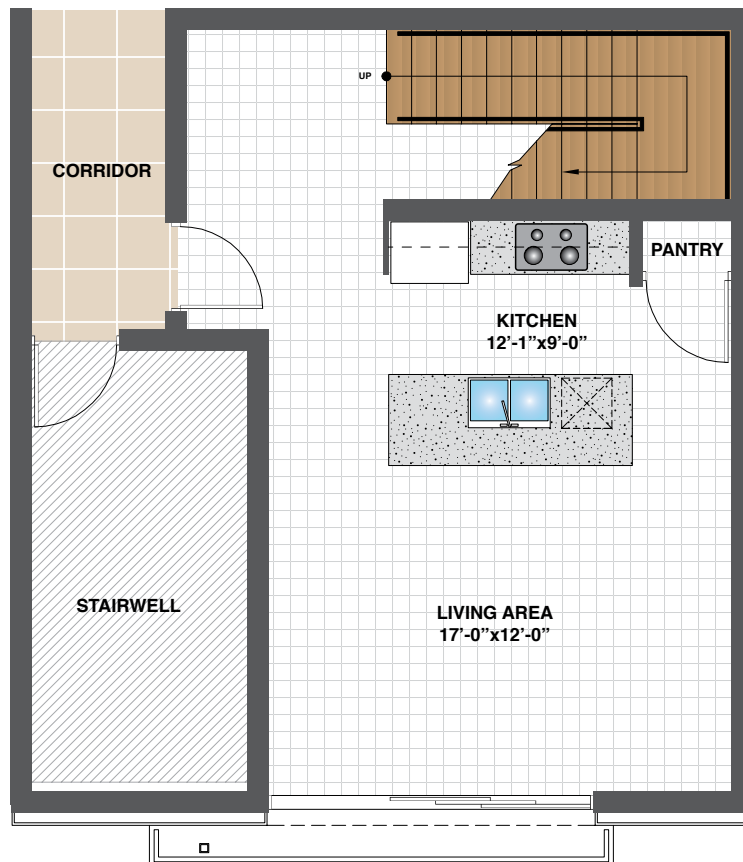


Stated square footages and dimensions of units are based on measurements to the exterior boundaries of the exterior walls and the centerline of interior demising walls between units and will vary from the square footages and dimensions of the unit that would be determined by using the description and definition of the "Unit" set forth in the Declaration (which generally only includes the interior airspace between the perimeter walls and excludes interior structural components and other common elements). This method of measurement is generally used in sales and marketing materials and is provided to allow a prospective buyer to compare the Units with 3 units in other condominium projects that utilize the same method. For your reference, the square footage of the Unit, determined in accordance with the definition of the "Unit" set forth in the Declaration, is + or - _____ sq. ft. for unit type _____. Terraces, patios, balconies, yards and private garages are not part of the "Unit". Measurements and dimensions of rooms set forth on this floor plan are generally taken at the farthest points of each given room (as if the room were a perfect rectangle), without regard for any cutouts, soffits or other variations. Accordingly, the square footage of the actual room will typically be smaller than the product obtained by multiplying the stated length times width. All square footages, dimensions and measurements are estimates which are based on preliminary plans and will vary with actual construction. All floor plans, specifications and other development plans are proposed and conceptual only, and are subject to change and will not necessarily accurately reflect the final plans and specifications.

MODEL E - EAST

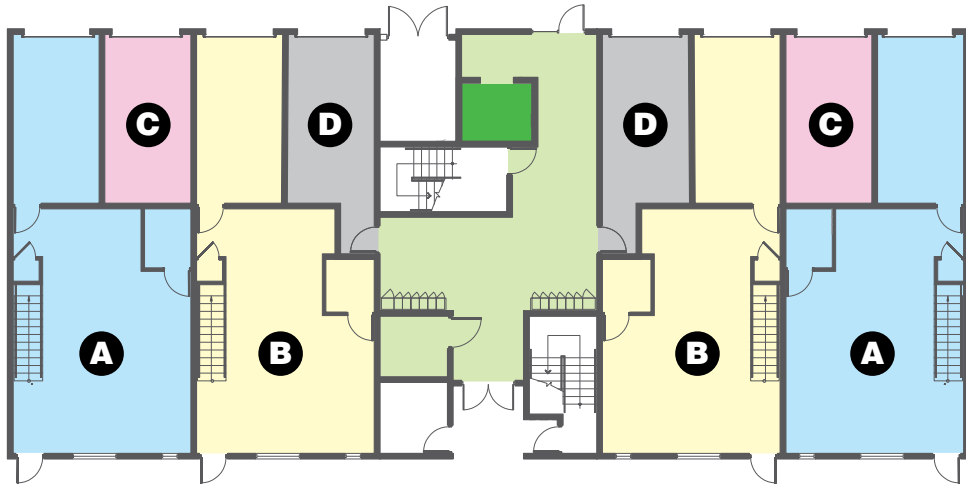
2 Bedroom, 2 Bath
(No Garage)

1,771 A/C sq. ft.
1,811 Total sq. ft.

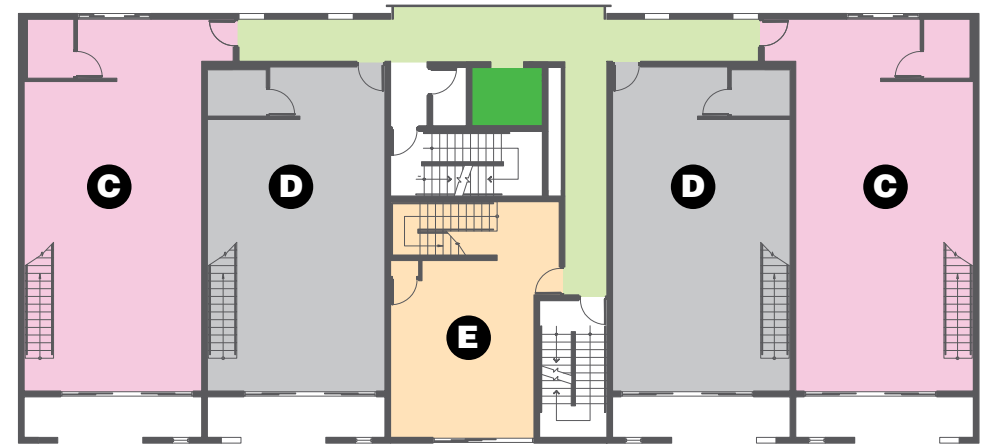


Stated square footages and dimensions of units are based on measurements to the exterior boundaries of the exterior walls and the centerline of interior demising walls between units and will vary from the square footages and dimensions of the unit that would be determined by using the description and definition of the "Unit" set forth in the Declaration (which generally only includes the interior airspace between the perimeter walls and excludes interior structural components and other common elements). This method of measurement is generally used in sales and marketing materials and is provided to allow a prospective buyer to compare the Units with 3 units in other condominium projects that utilize the same method. For your reference, the square footage of the Unit, determined in accordance with the definition of the "Unit" set forth in the Declaration, is + or - _____ sq. ft. for unit type _____. Terraces, patios, balconies, yards and private garages are not part of the "Unit". Measurements and dimensions of rooms set forth on this floor plan are generally taken at the farthest points of each given room (as if the room were a perfect rectangle), without regard for any cutouts, soffits or other variations. Accordingly, the square footage of the actual room will typically be smaller than the product obtained by multiplying the stated length times width. All square footages, dimensions and measurements are estimates which are based on preliminary plans and will vary with actual construction. All floor plans, specifications and other development plans are proposed and conceptual only, and are subject to change and will not necessarily accurately reflect the final plans and specifications.

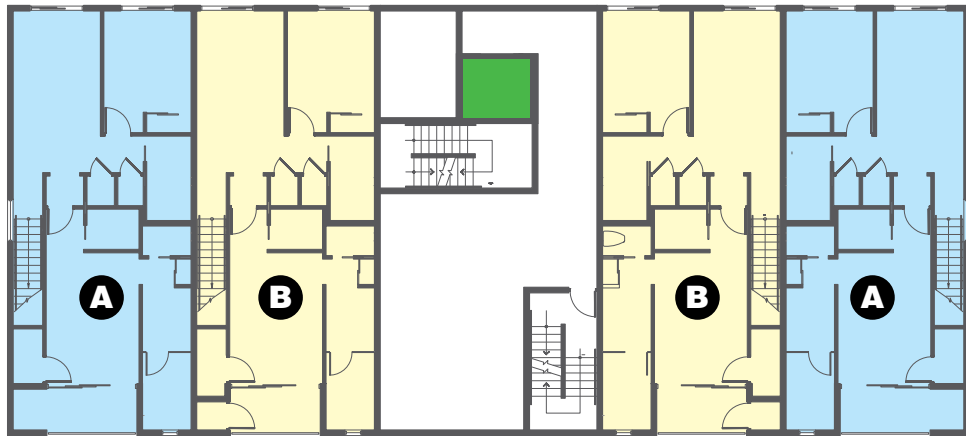
FIRST FLOOR



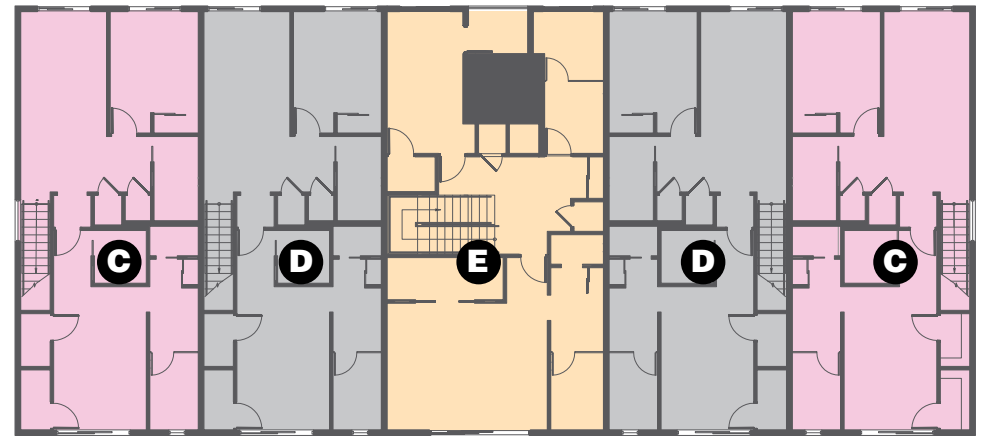
THIRD FLOOR



SECOND FLOOR



FOURTH FLOOR



EAST BUILDING COMMON AREA & GARAGE ACCESS DIAGRAM

Common Area, Lobby and Access to Homes

Model A
Direct Access into Model from Garage

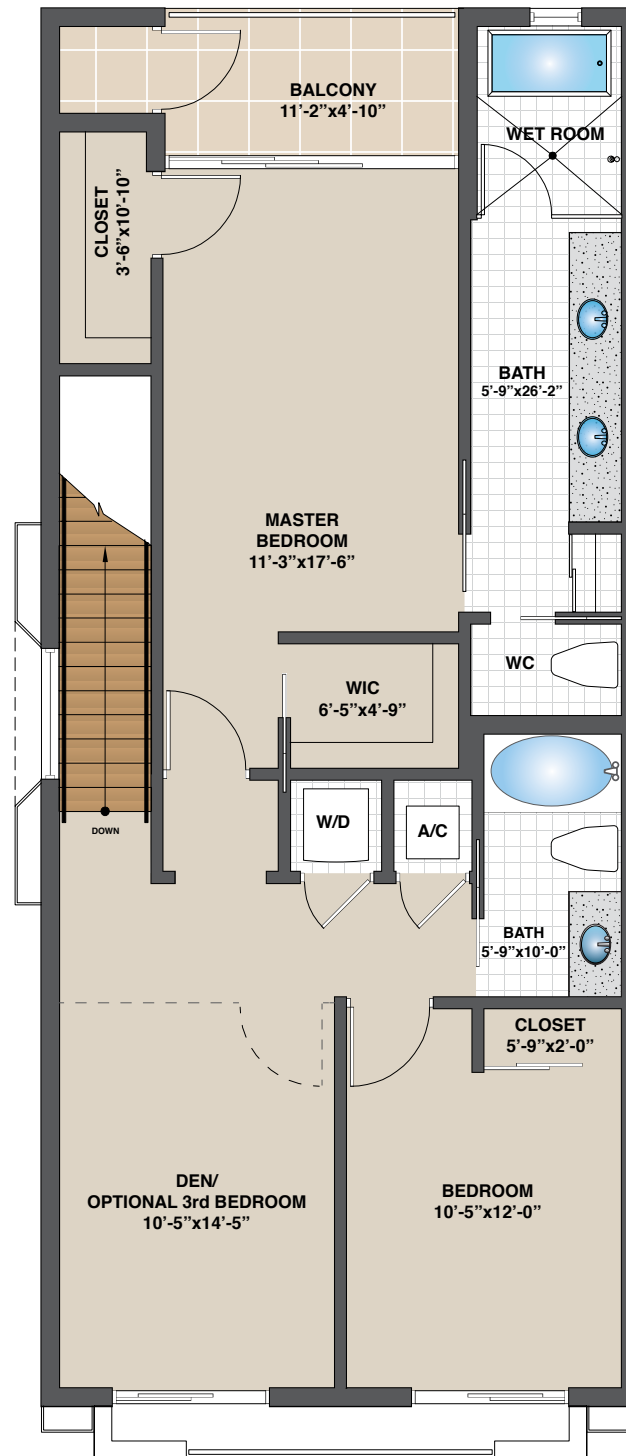
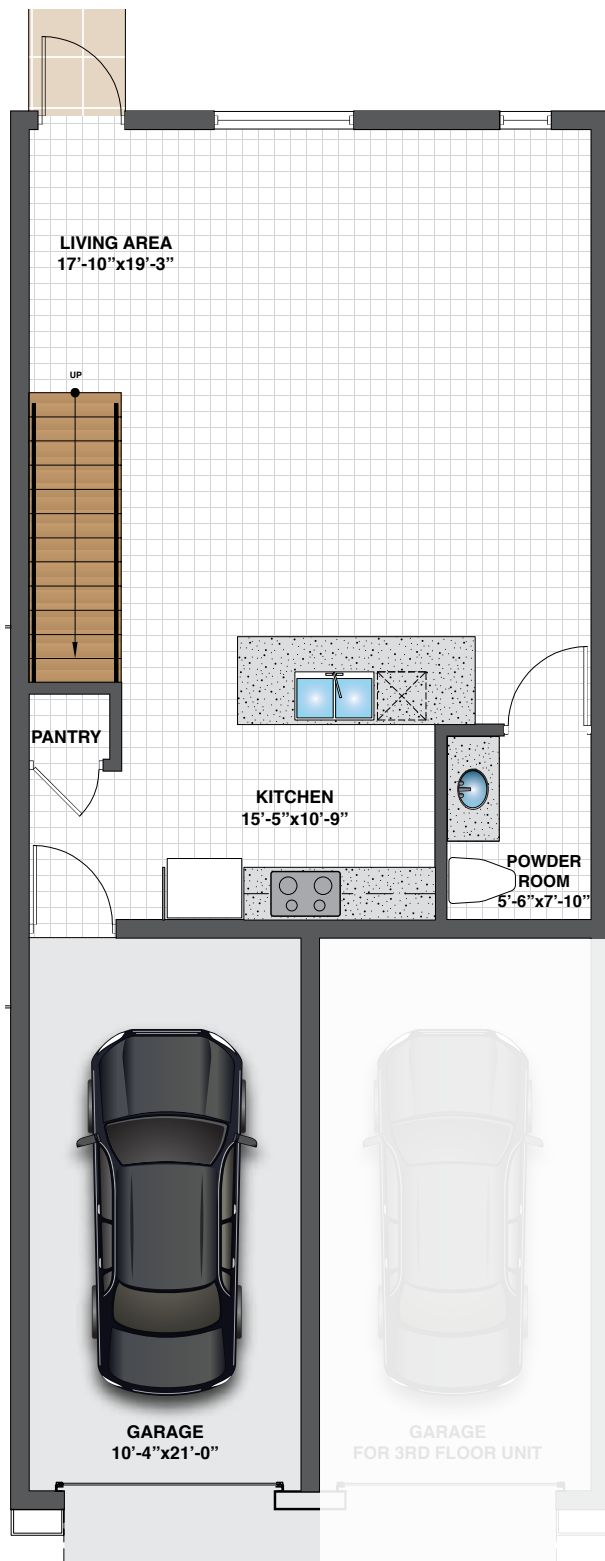
Model C
Exterior Access into Lobby

Model E – No Garage
Exterior Access into Lobby
Exterior Parking

Elevator

Model B
Direct Access into Model from Garage

Model D
Direct Lobby Access from Garage



MODEL A - WEST

2 Bedroom, 2.5 Bath
Den/Bedroom Option + Garage

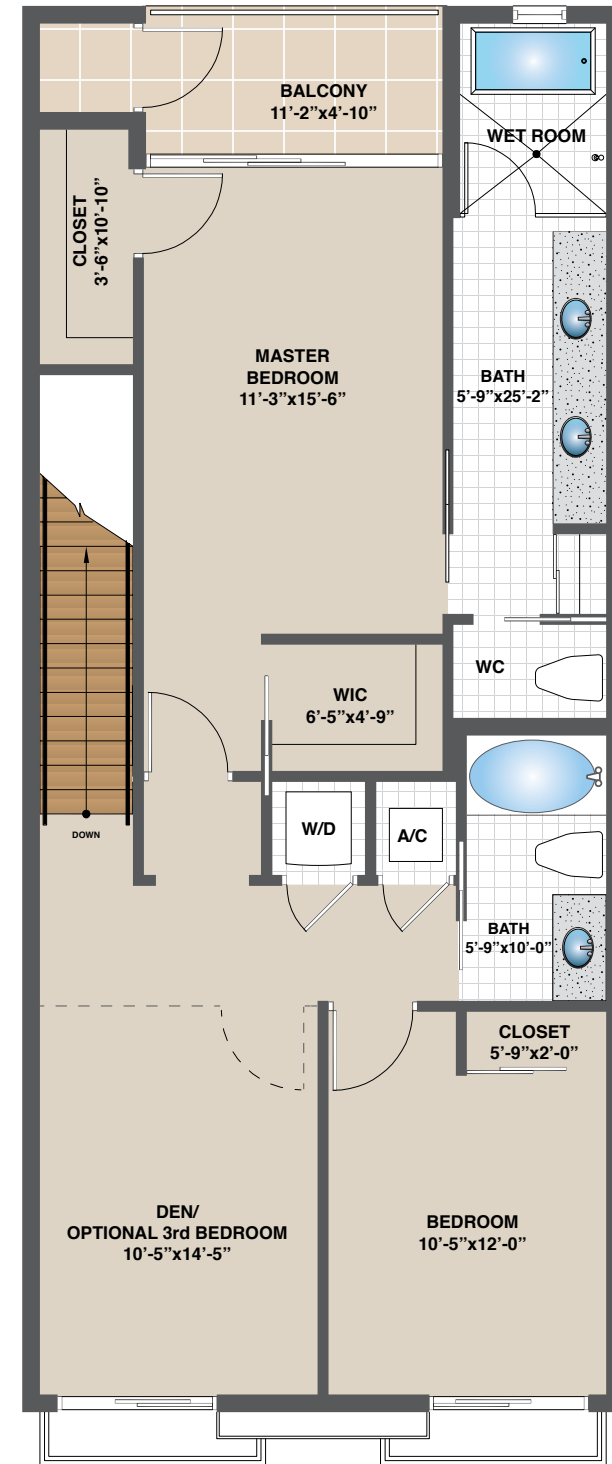
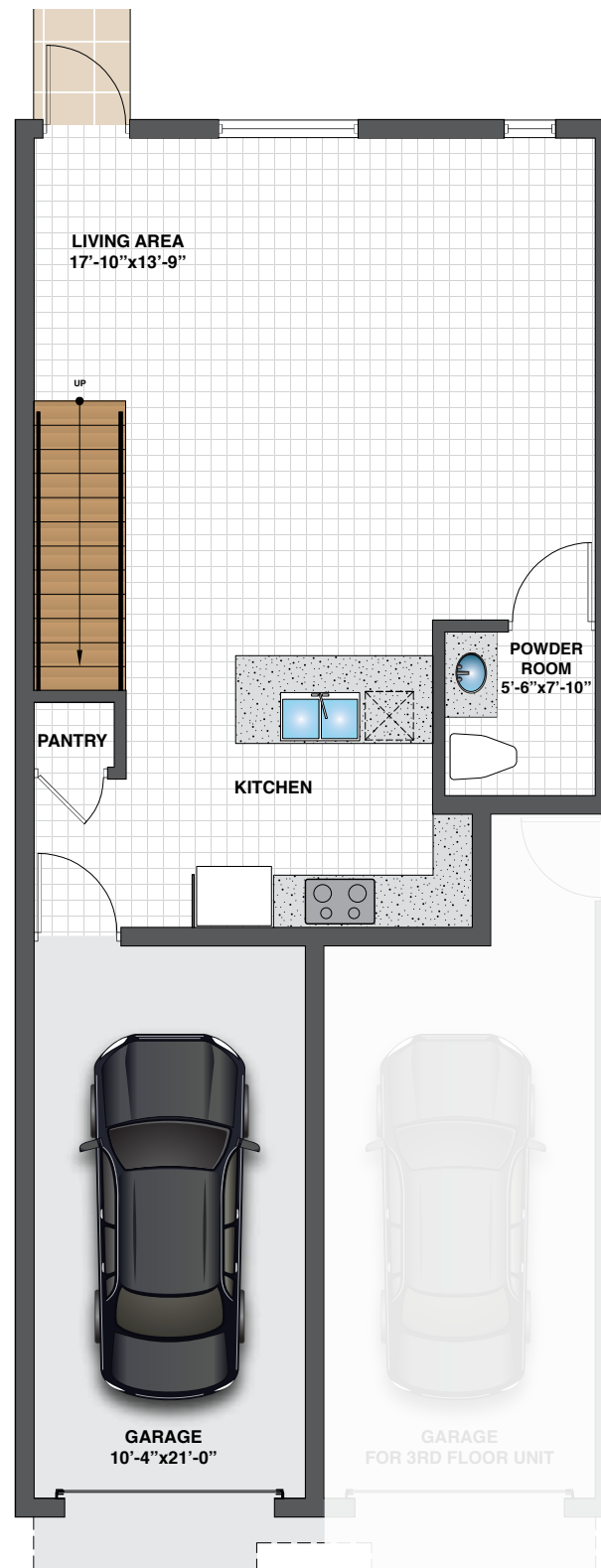
1,874 A/C sq. ft.
2,204 Total sq. ft.

Stated square footages and dimensions of units are based on measurements to the exterior boundaries of the exterior walls and the centerline of interior demising walls between units and will vary from the square footages and dimensions of the unit that would be determined by using the description and definition of the "Unit" set forth in the Declaration (which generally only includes the interior airspace between the perimeter walls and excludes interior structural components and other common elements). This method of measurement is generally used in sales and marketing materials and is provided to allow a prospective buyer to compare the Units with 3 units in other condominium projects that utilize the same method. For your reference, the square footage of the Unit, determined in accordance with the definition of the "Unit" set forth in the Declaration, is + or - _____ sq. ft. for unit type _____. Terraces, patios, balconies, yards and private garages are not part of the "Unit". Measurements and dimensions of rooms set forth on this floor plan are generally taken at the farthest points of each given room (as if the room were a perfect rectangle), without regard for any cutouts, soffits or other variations. Accordingly, the square footage of the actual room will typically be smaller than the product obtained by multiplying the stated length times width. All square footages, dimensions and measurements are estimates which are based on preliminary plans and will vary with actual construction. All floor plans, specifications and other development plans are proposed and conceptual only, and are subject to change and will not necessarily accurately reflect the final plans and specifications.

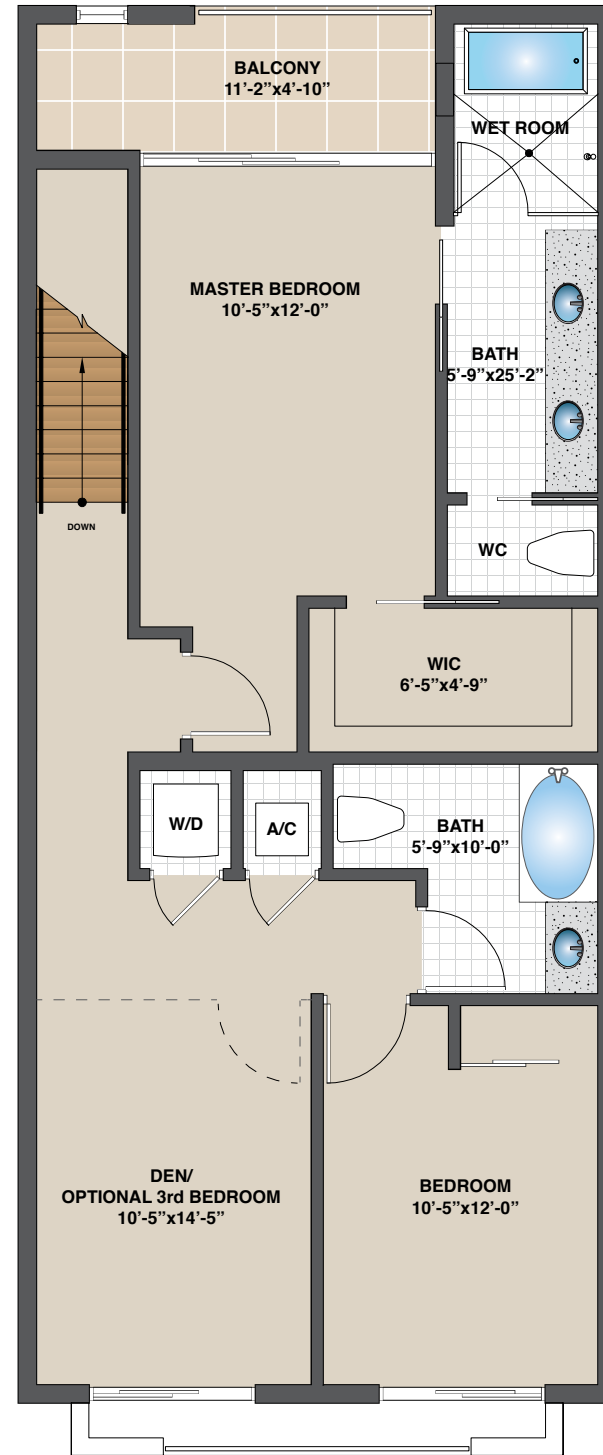
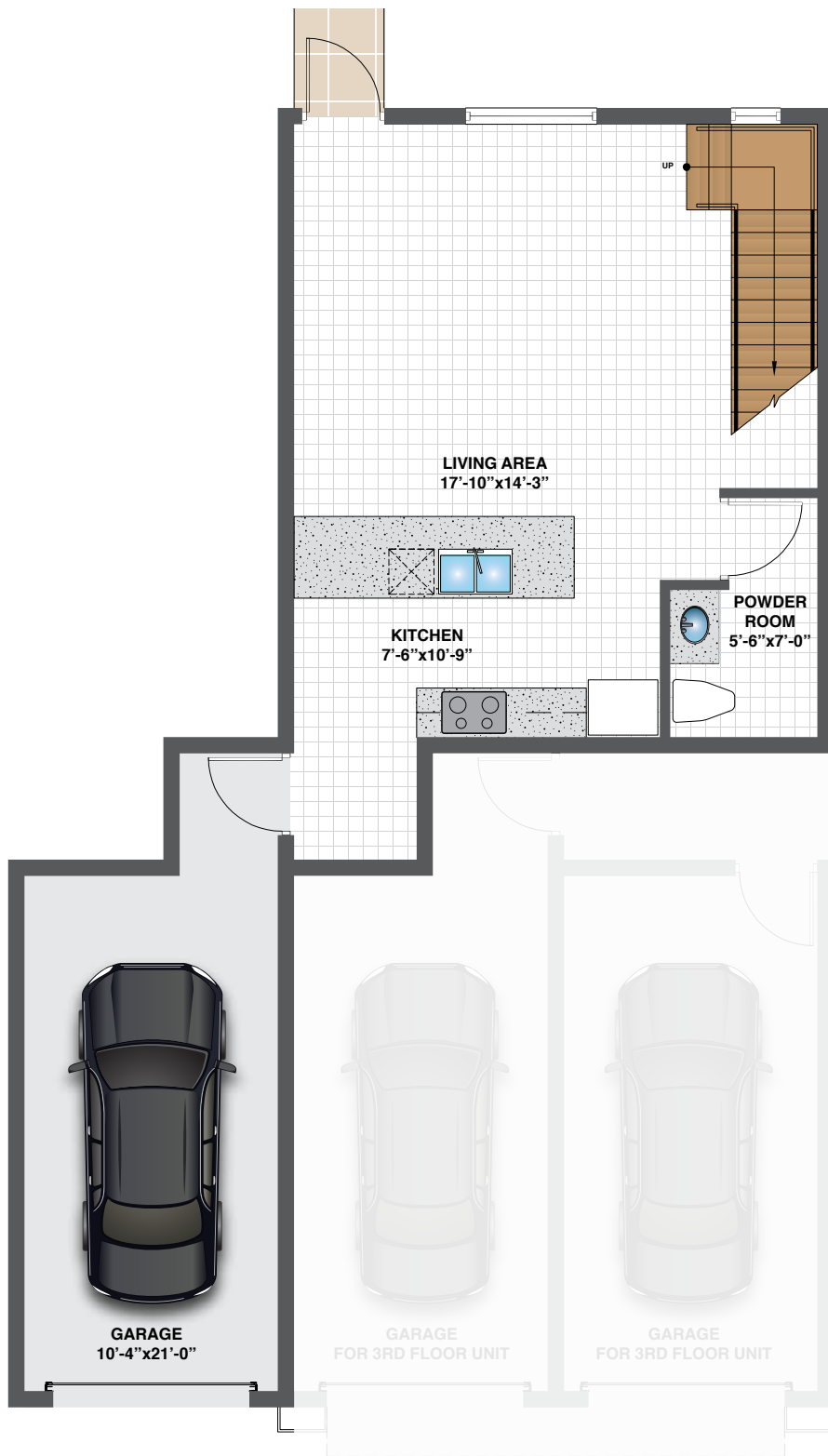
MODEL B - WEST

2 Bedroom, 2.5 Bath
Den/Bedroom Option + Garage

1,825 A/C sq. ft.
2,147 Total sq. ft.



Stated square footages and dimensions of units are based on measurements to the exterior boundaries of the exterior walls and the centerline of interior demising walls between units and will vary from the square footages and dimensions of the unit that would be determined by using the description and definition of the "Unit" set forth in the Declaration (which generally only includes the interior airspace between the perimeter walls and excludes interior structural components and other common elements). This method of measurement is generally used in sales and marketing materials and is provided to allow a prospective buyer to compare the Units with 3 units in other condominium projects that utilize the same method. For your reference, the square footage of the Unit, determined in accordance with the definition of the "Unit" set forth in the Declaration, is + or - _____ sq. ft. for unit type _____. Terraces, patios, balconies, yards and private garages are not part of the "Unit". Measurements and dimensions of rooms set forth on this floor plan are generally taken at the farthest points of each given room (as if the room were a perfect rectangle), without regard for any cutouts, soffits or other variations. Accordingly, the square footage of the actual room will typically be smaller than the product obtained by multiplying the stated length times width. All square footages, dimensions and measurements are estimates which are based on preliminary plans and will vary with actual construction. All floor plans, specifications and other development plans are proposed and conceptual only, and are subject to change and will not necessarily accurately reflect the final plans and specifications.



MODEL C - WEST

2 Bedroom, 2.5 Bath
Den/Bedroom Option + Garage

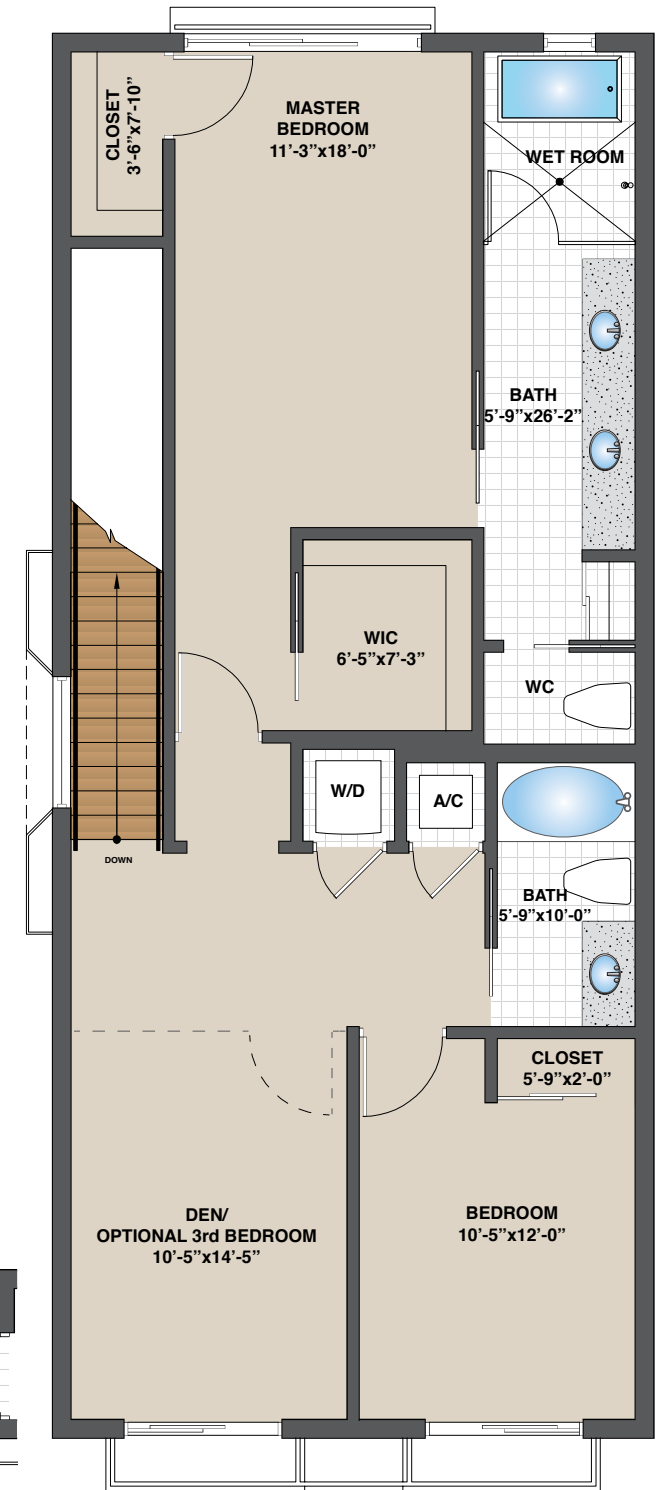
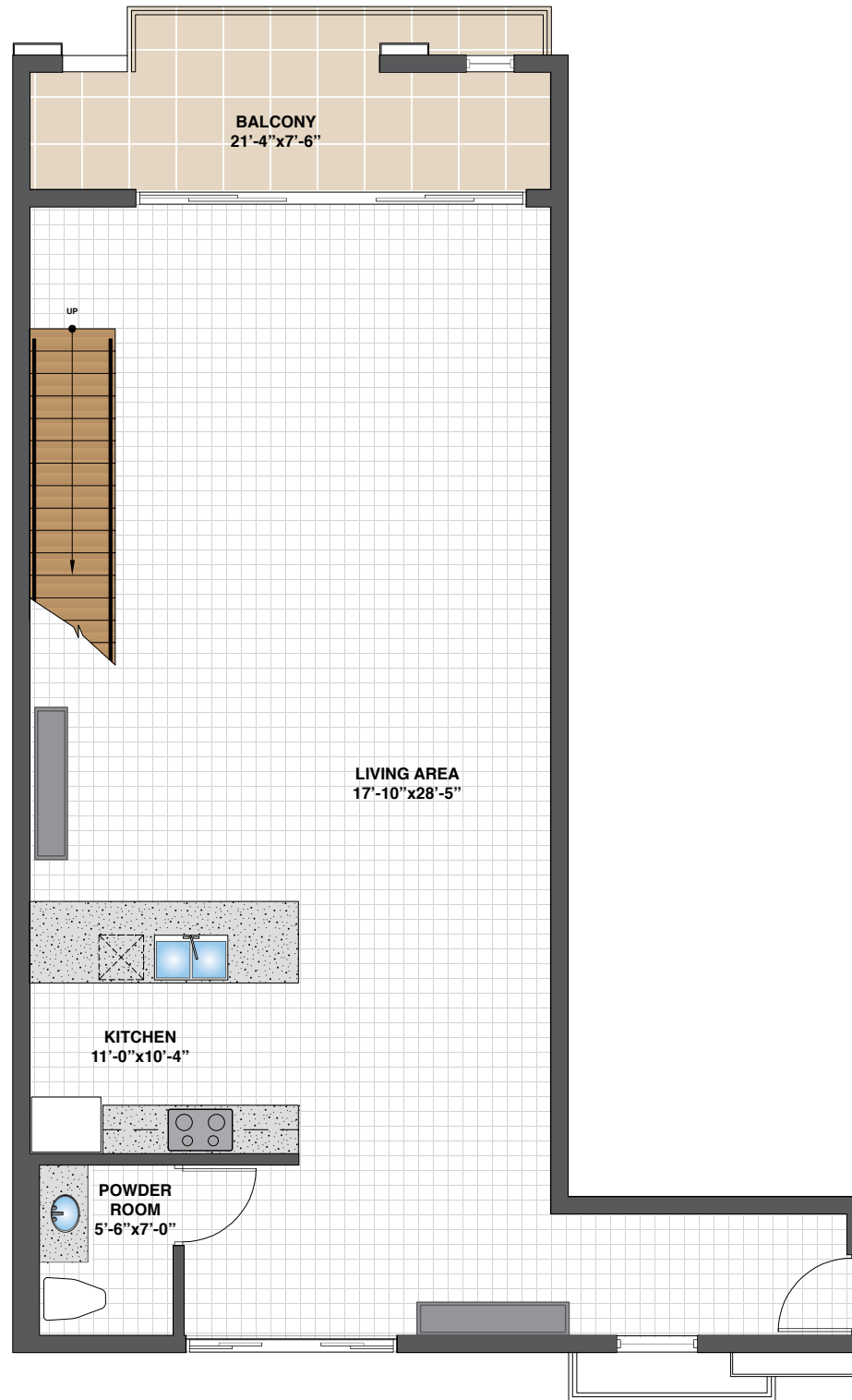
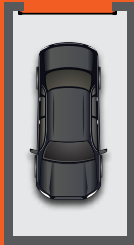
1,767 A/C sq. ft.
2,113 Total sq. ft.

Stated square footages and dimensions of units are based on measurements to the exterior boundaries of the exterior walls and the centerline of interior demising walls between units and will vary from the square footages and dimensions of the unit that would be determined by using the description and definition of the "Unit" set forth in the Declaration (which generally only includes the interior airspace between the perimeter walls and excludes interior structural components and other common elements). This method of measurement is generally used in sales and marketing materials and is provided to allow a prospective buyer to compare the Units with 3 units in other condominium projects that utilize the same method. For your reference, the square footage of the Unit, determined in accordance with the definition of the "Unit" set forth in the Declaration, is + or - _____ sq. ft. for unit type _____. Terraces, patios, balconies, yards and private garages are not part of the "Unit". Measurements and dimensions of rooms set forth on this floor plan are generally taken at the farthest points of each given room (as if the room were a perfect rectangle), without regard for any cutouts, soffits or other variations. Accordingly, the square footage of the actual room will typically be smaller than the product obtained by multiplying the stated length times width. All square footages, dimensions and measurements are estimates which are based on preliminary plans and will vary with actual construction. All floor plans, specifications and other development plans are proposed and conceptual only, and are subject to change and will not necessarily accurately reflect the final plans and specifications.

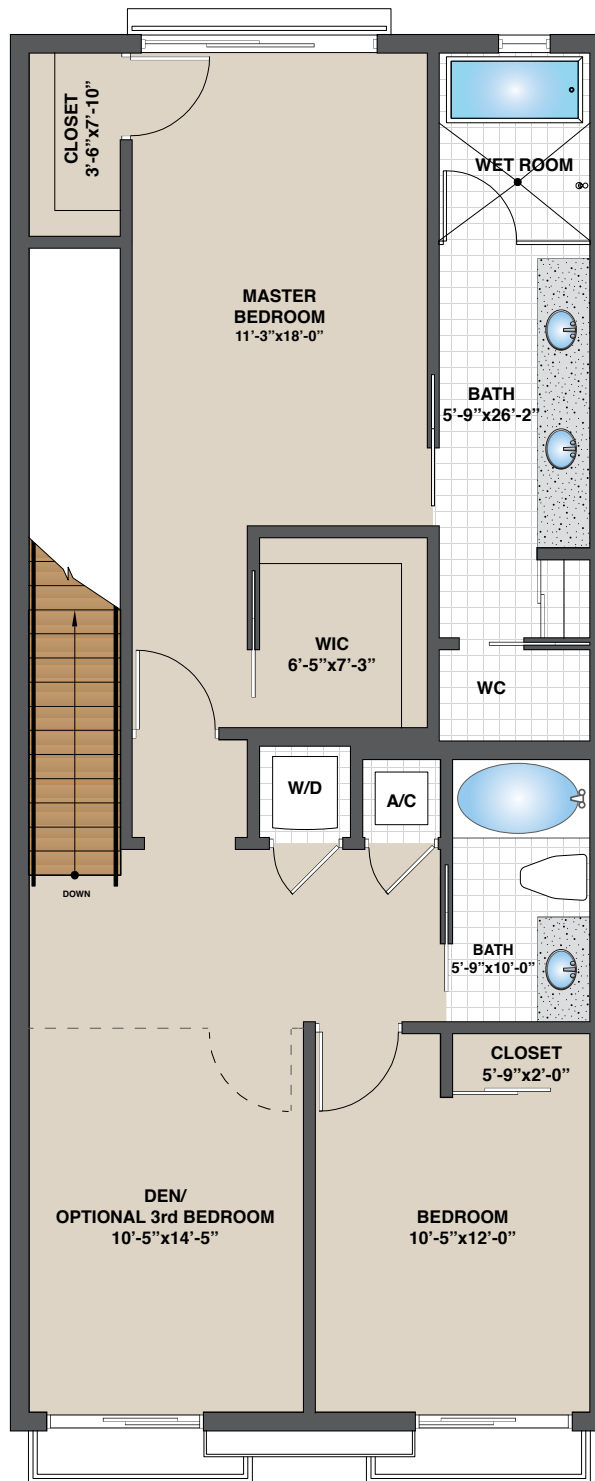
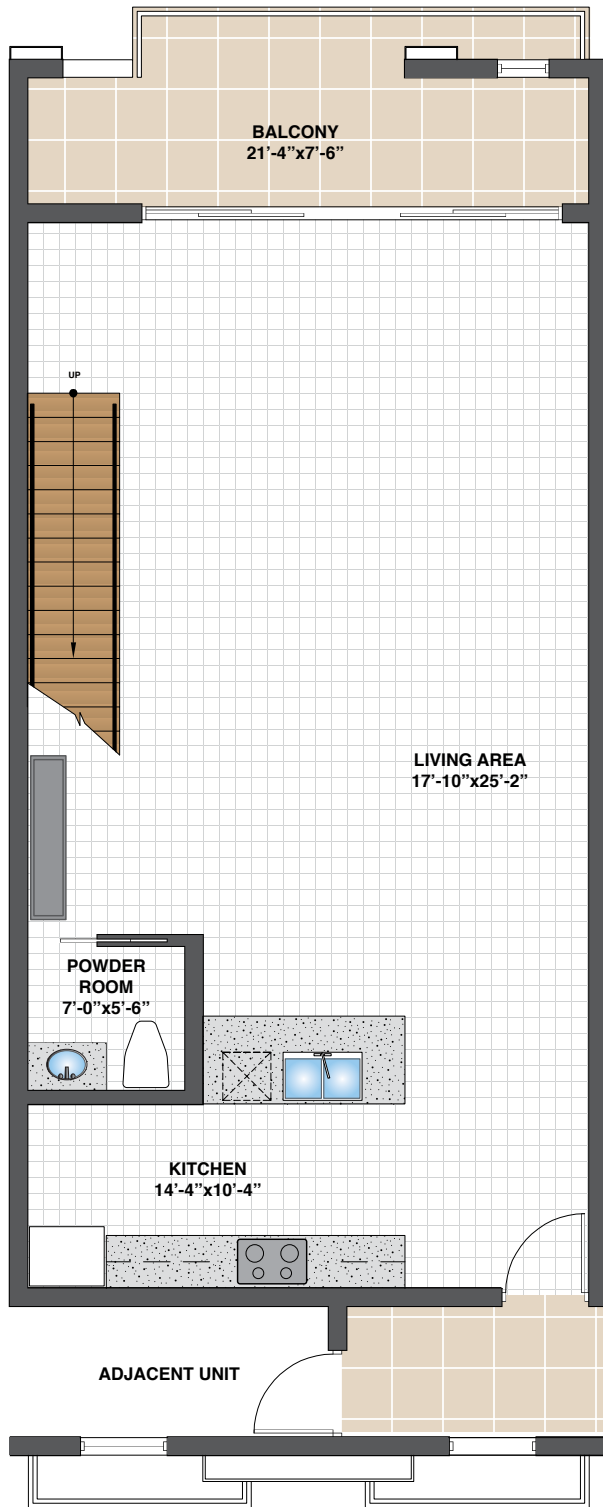
MODEL D - WEST

2 Bedroom, 2.5 Bath
Den/Bedroom Option + Garage

2,438 A/C sq. ft.
2,803 Total sq. ft.



Stated square footages and dimensions of units are based on measurements to the exterior boundaries of the exterior walls and the centerline of interior demising walls between units and will vary from the square footages and dimensions of the unit that would be determined by using the description and definition of the "Unit" set forth in the Declaration (which generally only includes the interior airspace between the perimeter walls and excludes interior structural components and other common elements). This method of measurement is generally used in sales and marketing materials and is provided to allow a prospective buyer to compare the Units with 3 units in other condominium projects that utilize the same method. For your reference, the square footage of the Unit, determined in accordance with the definition of the "Unit" set forth in the Declaration, is + or - _____ sq. ft. for unit type _____. Terraces, patios, balconies, yards and private garages are not part of the "Unit". Measurements and dimensions of rooms set forth on this floor plan are generally taken at the farthest points of each given room (as if the room were a perfect rectangle), without regard for any cutouts, soffits or other variations. Accordingly, the square footage of the actual room will typically be smaller than the product obtained by multiplying the stated length times width. All square footages, dimensions and measurements are estimates which are based on preliminary plans and will vary with actual construction. All floor plans, specifications and other development plans are proposed and conceptual only, and are subject to change and will not necessarily accurately reflect the final plans and specifications.



MODEL E - WEST

2 Bedroom, 2.5 Bath
Den/Bedroom Option + Garage

2,202 A/C sq. ft.
2,591 Total sq. ft.

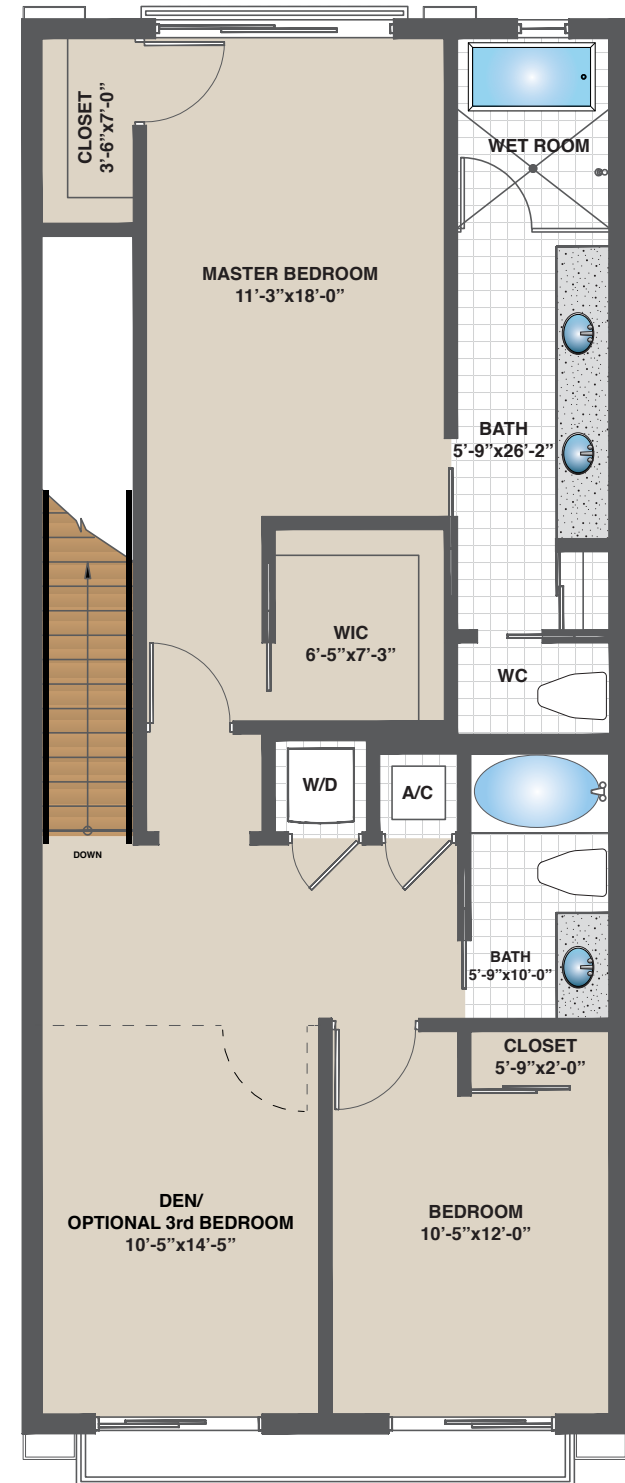
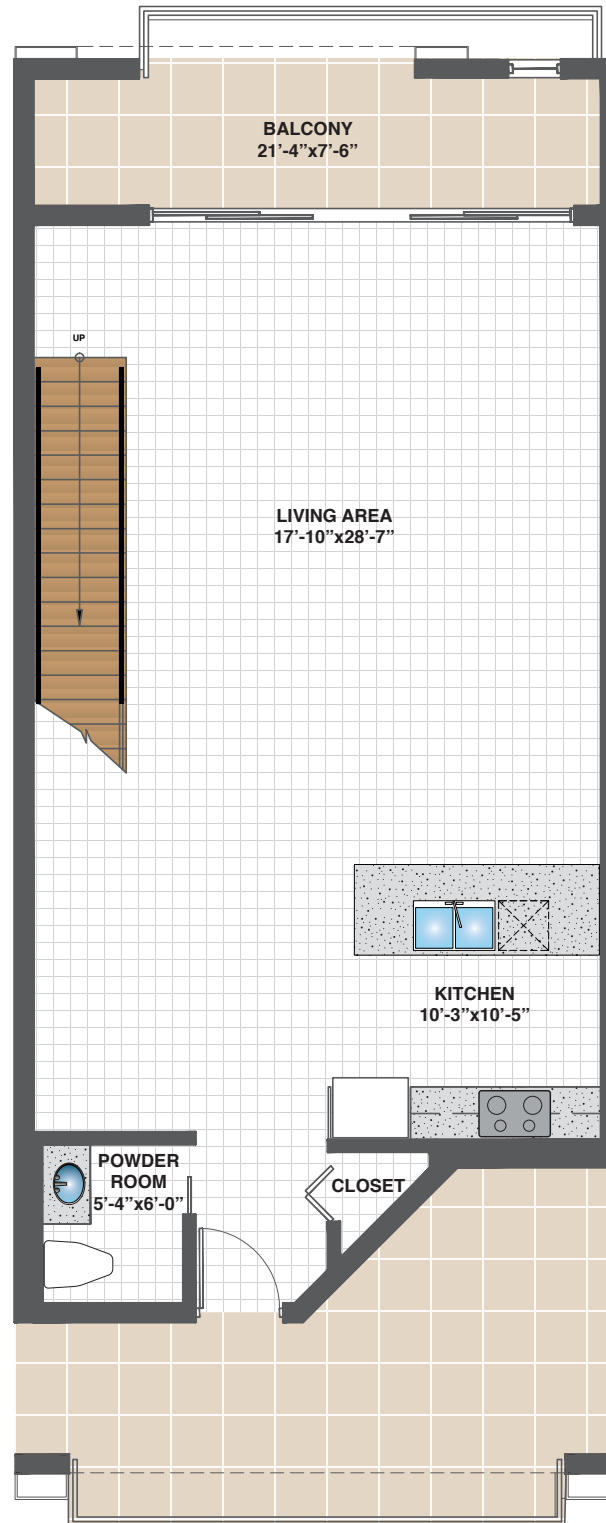


Stated square footages and dimensions of units are based on measurements to the exterior boundaries of the exterior walls and the centerline of interior demising walls between units and will vary from the square footages and dimensions of the unit that would be determined by using the description and definition of the "Unit" set forth in the Declaration (which generally only includes the interior airspace between the perimeter walls and excludes interior structural components and other common elements). This method of measurement is generally used in sales and marketing materials and is provided to allow a prospective buyer to compare the Units with 3 units in other condominium projects that utilize the same method. For your reference, the square footage of the Unit, determined in accordance with the definition of the "Unit" set forth in the Declaration, is + or - _____ sq. ft. for unit type _____. Terraces, patios, balconies, yards and private garages are not part of the "Unit". Measurements and dimensions of rooms set forth on this floor plan are generally taken at the farthest points of each given room (as if the room were a perfect rectangle), without regard for any cutouts, soffits or other variations. Accordingly, the square footage of the actual room will typically be smaller than the product obtained by multiplying the stated length times width. All square footages, dimensions and measurements are estimates which are based on preliminary plans and will vary with actual construction. All floor plans, specifications and other development plans are proposed and conceptual only, and are subject to change and will not necessarily accurately reflect the final plans and specifications.

MODEL F - WEST

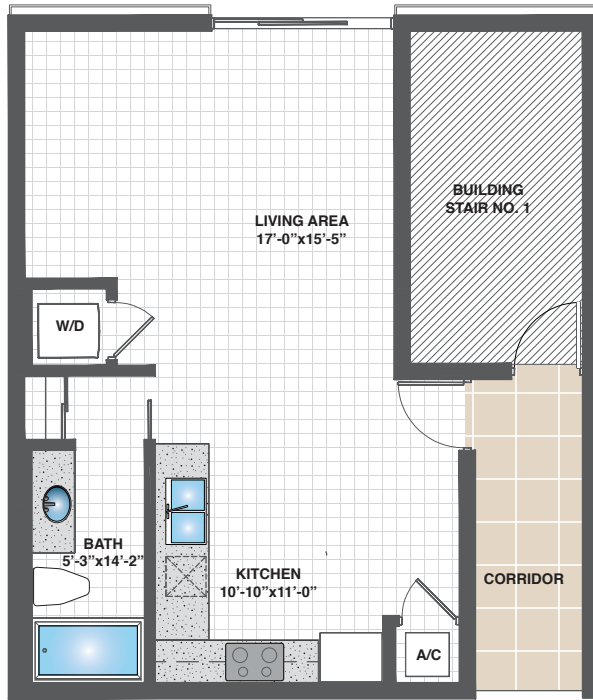
2 Bedroom, 2.5 Bath
Den/Bedroom Option + Garage

2,163 A/C sq. ft.
2,526 Total sq. ft.

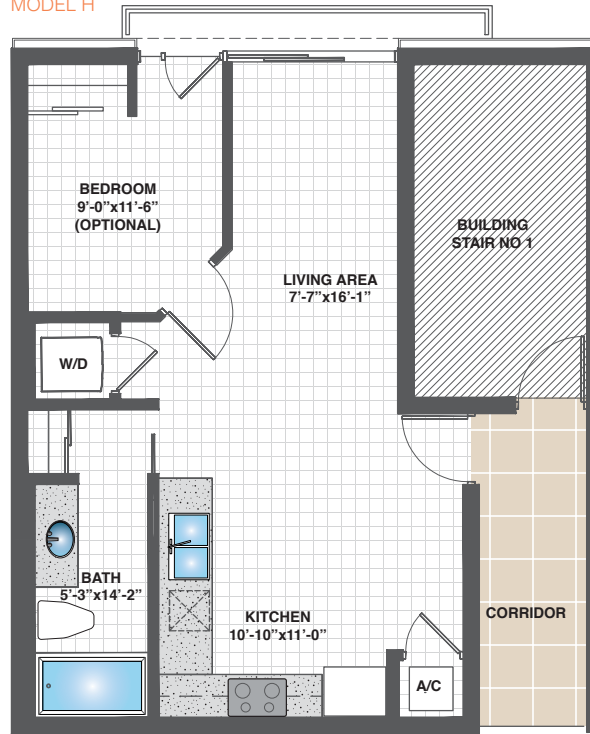


Stated square footages and dimensions of units are based on measurements to the exterior boundaries of the exterior walls and the centerline of interior demising walls between units and will vary from the square footages and dimensions of the unit that would be determined by using the description and definition of the "Unit" set forth in the Declaration (which generally only includes the interior airspace between the perimeter walls and excludes interior structural components and other common elements). This method of measurement is generally used in sales and marketing materials and is provided to allow a prospective buyer to compare the Units with 3 units in other condominium projects that utilize the same method. For your reference, the square footage of the Unit, determined in accordance with the definition of the "Unit" set forth in the Declaration, is + or - _____ sq. ft. for unit type _____. Terraces, patios, balconies, yards and private garages are not part of the "Unit". Measurements and dimensions of rooms set forth on this floor plan are generally taken at the farthest points of each given room (as if the room were a perfect rectangle), without regard for any cutouts, soffits or other variations. Accordingly, the square footage of the actual room will typically be smaller than the product obtained by multiplying the stated length times width. All square footages, dimensions and measurements are estimates which are based on preliminary plans and will vary with actual construction. All floor plans, specifications and other development plans are proposed and conceptual only, and are subject to change and will not necessarily accurately reflect the final plans and specifications.

MODEL G



MODEL H



MODEL G - WEST

Studio | 590 Total sq. ft.
(No Garage)

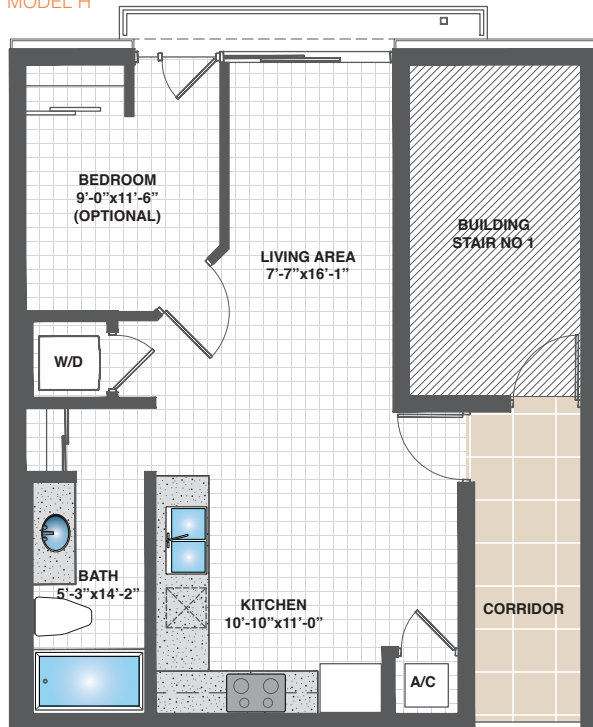
MODEL H - WEST

Studio | 590 Total sq. ft.
(No Garage)

MODEL I - WEST

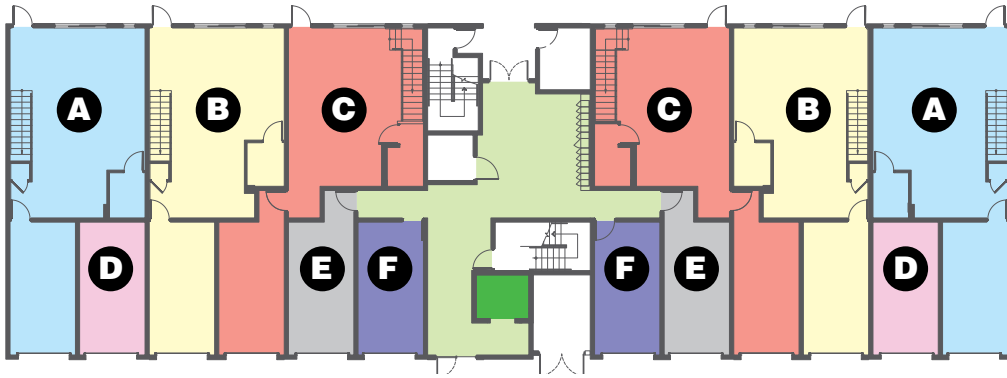
Studio | 590 Total sq. ft.
(No Garage)

MODEL H

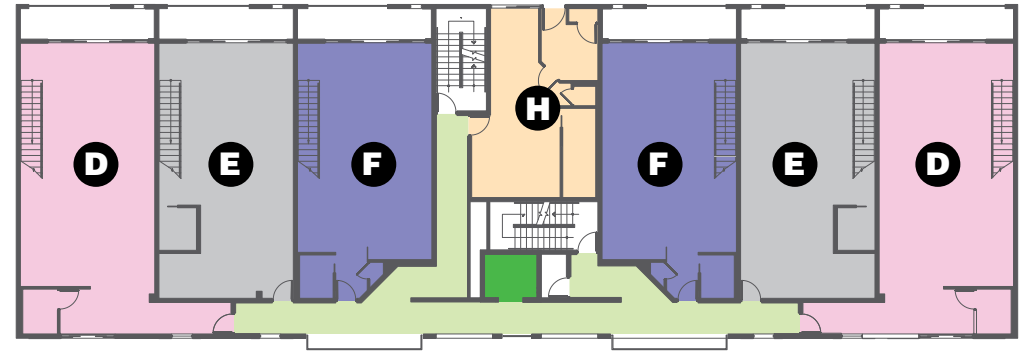


Stated square footages and dimensions of units are based on measurements to the exterior boundaries of the exterior walls and the centerline of interior demising walls between units and will vary from the square footages and dimensions of the unit that would be determined by using the description and definition of the "Unit" set forth in the Declaration (which generally only includes the interior airspace between the perimeter walls and excludes interior structural components and other common elements). This method of measurement is generally used in sales and marketing materials and is provided to allow a prospective buyer to compare the Units with 3 units in other condominium projects that utilize the same method. For your reference, the square footage of the Unit, determined in accordance with the definition of the "Unit" set forth in the Declaration, is + or - _____ sq. ft. for unit type _____. Terraces, patios, balconies, yards and private garages are not part of the "Unit". Measurements and dimensions of rooms set forth on this floor plan are generally taken at the farthest points of each given room (as if the room were a perfect rectangle), without regard for any cutouts, soffits or other variations. Accordingly, the square footage of the actual room will typically be smaller than the product obtained by multiplying the stated length times width. All square footages, dimensions and measurements are estimates which are based on preliminary plans and will vary with actual construction. All floor plans, specifications and other development plans are proposed and conceptual only, and are subject to change and will not necessarily accurately reflect the final plans and specifications.

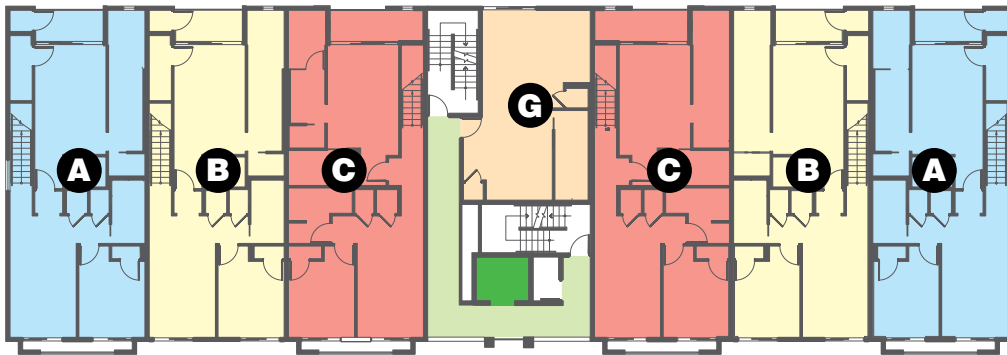
FIRST FLOOR



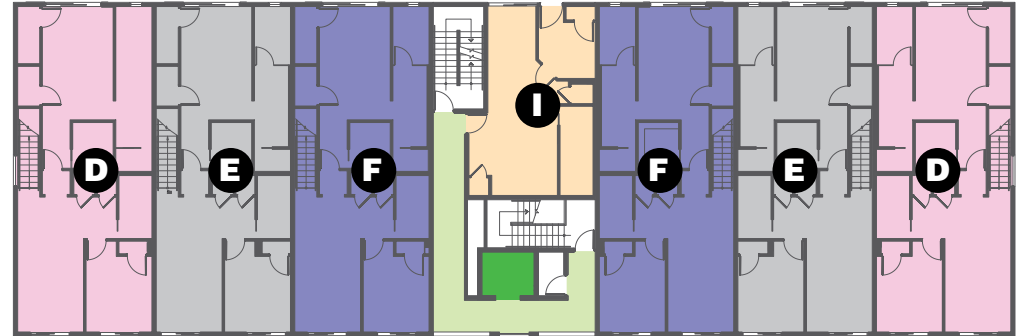
THIRD FLOOR




SECOND FLOOR





FOURTH FLOOR




WEST BUILDING COMMON AREA & GARAGE ACCESS DIAGRAM

 Common Area, Lobby and Access to Homes

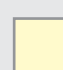
 Model A
Direct Access into Model from Garage

 Model C
Direct Access into Model from Garage

 Model E
Direct Lobby Access from Garage

 Models G, H, I – No Garage
Exterior Access into Lobby
Exterior Parking

 Elevator

 Model B
Direct Access into Model from Garage

 Model D
Exterior Access into Lobby

 Model F
Direct Lobby Access from Garage