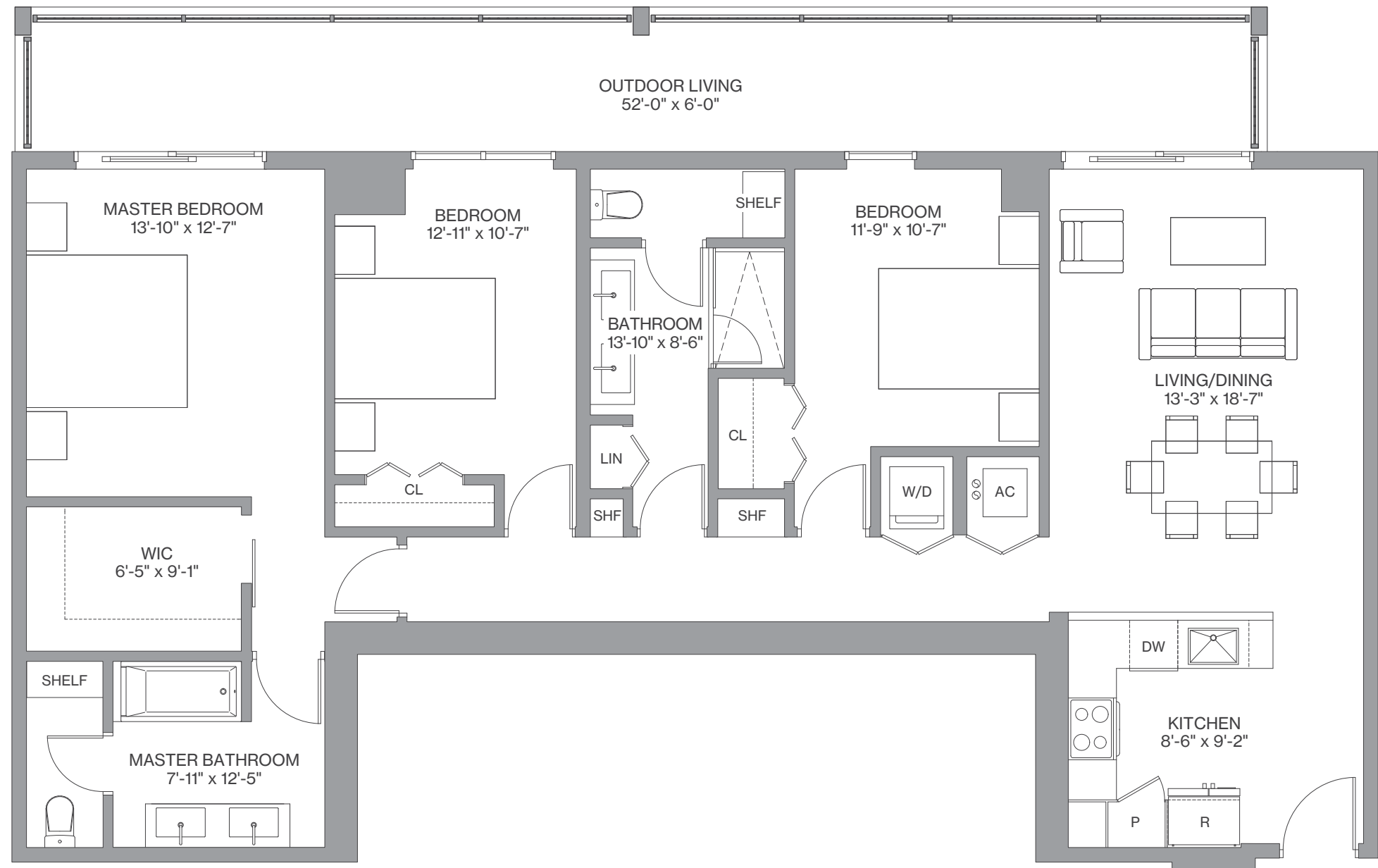


C1 / Line 01

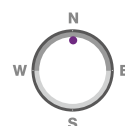
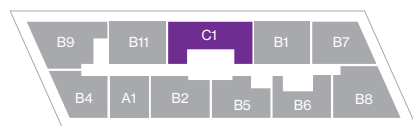
3 Bedrooms / 2 Baths


Floors: 8 - 26

Residence Interior	1,384 Sq Ft	128 Sq M
Outdoor Living	312 Sq Ft	29 Sq M
Total :	1,696 Sq Ft	157 Sq M



FLOORS 8 - 26



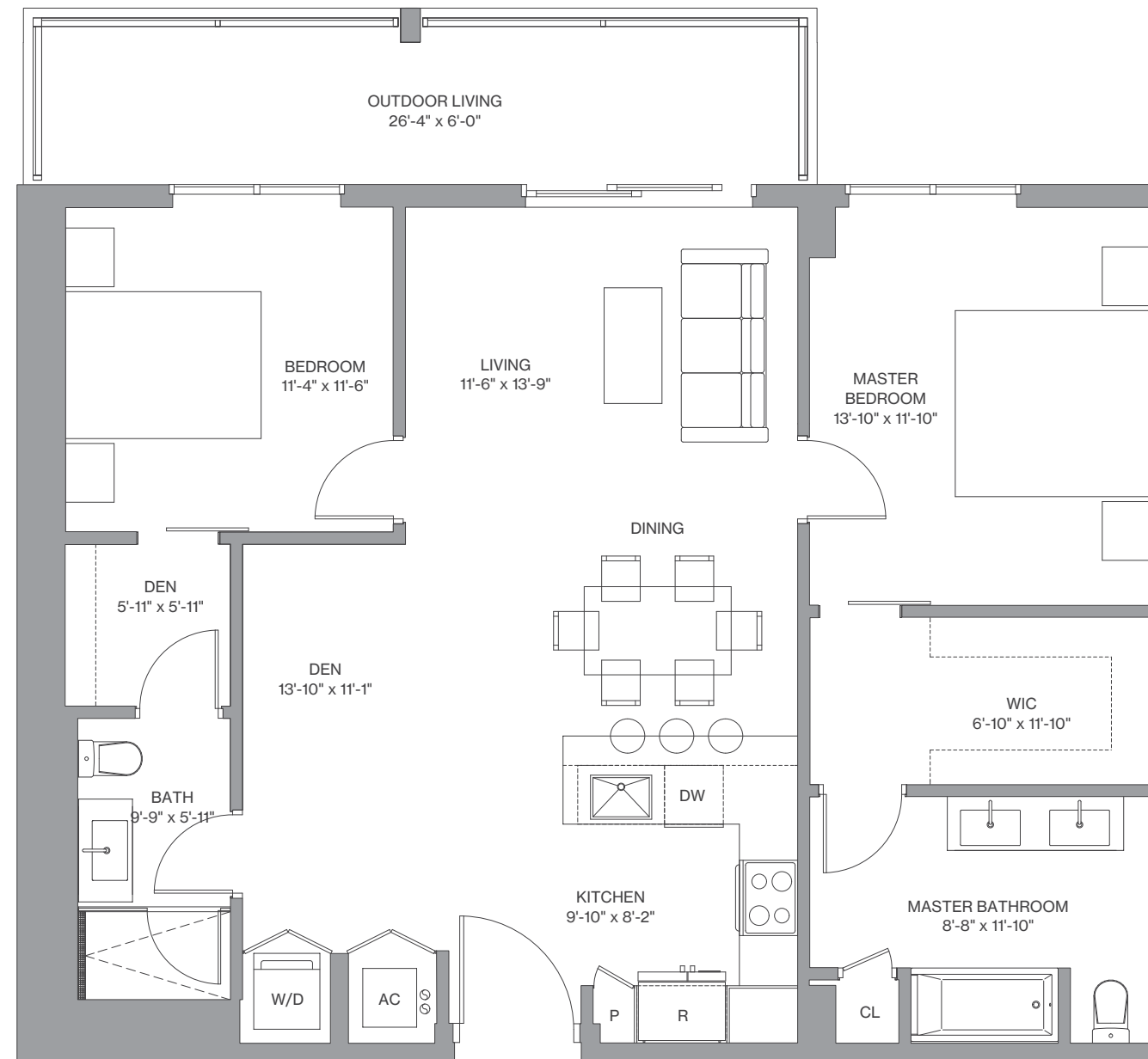
 We are pledged to the letter and spirit of U.S. policy for the achievement of equal housing throughout the Nation. We encourage and support an affirmative advertising, marketing and sales program in which there are no barriers to obtaining housing because of race, color, sex, religion, handicap, familial status or national origin. Any stated square footages, dimensions and other measurements reflected herein are based on preliminary pre-construction plans, which are subject to change without notice and will vary with actual construction. Any stated square footages, dimensions and other measurements of units are measured to the exterior boundaries of the exterior walls and the centerline of interior demising walls between units and will vary from the dimensions of the unit that would be determined by using the description and definition of the "Unit" as set forth in the Declaration of Condominium (the "Declaration") for the Condominium (which generally only includes the interior airspace between the perimeter walls and excludes all interior structural components and other common elements). This method of measurement is generally used in sales materials and is provided to allow a prospective purchaser to compare the units in the Condominium with units in other condominium projects that utilize the same method. Terraces, patios and balconies are not part of the unit. Measurements and dimensions of rooms are generally taken at the farthest points of each given room (as if the room were a perfect rectangle), without regard for any cutouts, soffits or other variations. Accordingly, the square footage of the actual room will typically be smaller than the product obtained by multiplying the stated length and width. For the square footage of the units based on the definition of "Unit" in the Declaration, refer to Exhibit "2" to the Declaration included in the Condominium Documents. Each purchaser is advised that there are various methods for calculating the square footage of a Unit, and that, depending on the method of calculation, the quoted square footage of a Unit in advertising materials may vary from the square footage quoted in the Prospectus and Declaration. The dimensions of the Unit shown in these floor plans have been calculated from the exterior boundaries of the exterior walls to the centerline of interior demising walls, including common elements such as structural walls and other interior structural components of the building, and in fact vary from the dimensions that would be determined by using the description and definition of the "Unit" set forth in the Prospectus and Declaration. The area of the Unit as defined in the Prospectus and Declaration is less than the square footage reflected here. Measurements of rooms set forth on this floor plan are generally taken at the greatest points (as if the room were a perfect rectangle), without regard for any cutouts, meaning the usable area of the actual room will typically be smaller than calculated by multiplying the length times width. All dimensions are approximate, may vary with actual construction, and are subject to development plans which may change. The furnishings and décor illustrated or depicted are not included with the purchase of the Unit. See Prospectus for information on what is offered with the Unit and the Unit square footage and dimensions.

B1 & B11 / Line 11, Line 02

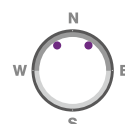
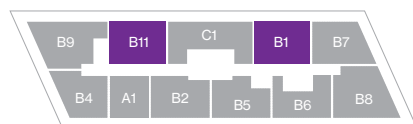
2 Bedrooms / 2 Baths + Den

Floors: 2 - 26

Residence Interior	1,093 - 1,118 Sq Ft	101 -104 Sq M
Outdoor Living	156 -158 Sq Ft	14 -15 Sq M
Total :	1,249 - 1,276 Sq Ft	115 - 119 Sq M



FLOORS 2 - 26



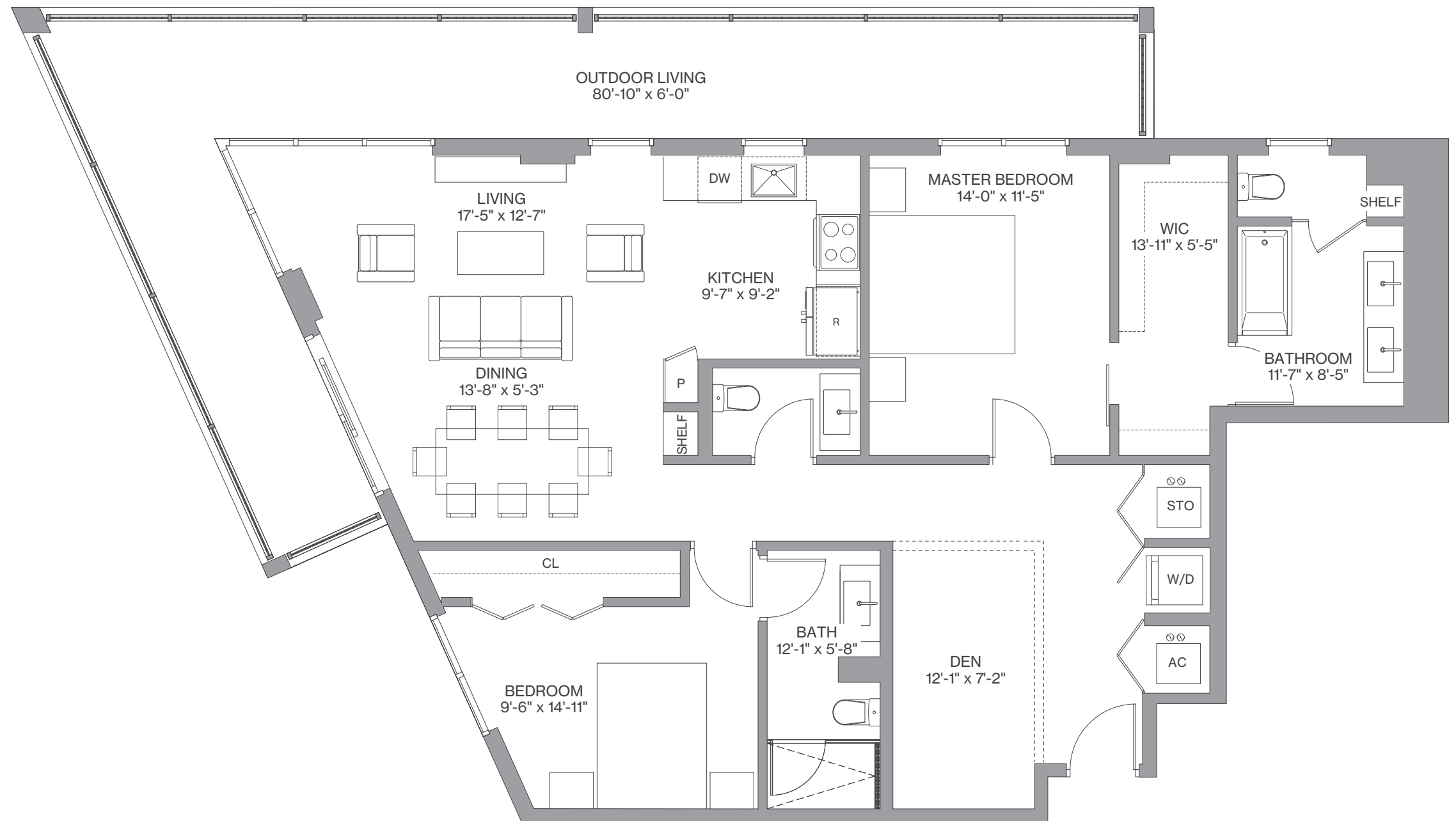
We are pledged to the letter and spirit of U.S. policy for the achievement of equal housing throughout the Nation. We encourage and support an affirmative advertising, marketing and sales program in which there are no barriers to obtaining housing because of race, color, sex, religion, handicap, familial status or national origin. Any stated square footages, dimensions and other measurements reflected herein are based on preliminary pre-construction plans, which are subject to change without notice and will vary with actual construction. Any stated square footages, dimensions and other measurements of units are measured to the exterior boundaries of the exterior walls and the centerline of interior demising walls between units and will vary from the dimensions of the unit that would be determined by using the description and definition of the "Unit" as set forth in the Declaration of Condominium (the "Declaration") for the Condominium (which generally only includes the interior airspace between the perimeter walls and excludes all interior structural components and other common elements). This method of measurement is generally used in sales materials and is provided to allow a prospective purchaser to compare the units in the Condominium with units in other condominium projects that utilize the same method. Terraces, patios and balconies are not part of the unit. Measurements and dimensions of rooms are generally taken at the farthest points of each given room (as if the room were a perfect rectangle), without regard for any cutouts, soffits or other variations. Accordingly, the square footage of the actual room will typically be smaller than the product obtained by multiplying the stated length and width. For the square footage of the units based on the definition of "Unit" in the Declaration, refer to Exhibit "2" to the Declaration included in the Condominium Documents. Each purchaser is advised that there are various methods for calculating the square footage of a Unit, and that, depending on the method of calculation, the quoted square footage of a Unit in advertising materials may vary from the square footage quoted in the Prospectus and Declaration. The dimensions of the Unit shown in these floor plans have been calculated from the exterior boundaries of the exterior walls to the centerline of interior demising walls, including common elements such as structural walls and other interior structural components of the building, and in fact vary from the dimensions that would be determined by using the description and definition of the "Unit" set forth in the Prospectus and Declaration. The area of the Unit as defined in the Prospectus and Declaration is less than the square footage reflected here. Measurements of rooms set forth on this floor plan are generally taken at the greatest points (as if the room were a perfect rectangle), without regard for any cutouts, meaning the usable area of the actual room will typically be smaller than calculated by multiplying the length times width. All dimensions are approximate, may vary with actual construction, and are subject to development plans which may change. The furnishings and décor illustrated or depicted are not included with the purchase of the Unit. See Prospectus for information on what is offered with the Unit and the Unit square footage and dimensions.

B9 / Line 03

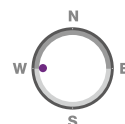
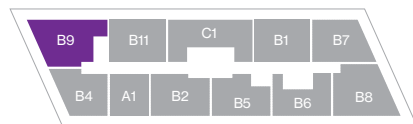
2 Bedrooms / 2.5 Baths + Den

Floors: 2 - 25

Residence Interior	1,306 Sq Ft	121 Sq M
Outdoor Living	430 Sq Ft	40 Sq M
Total :	1,736 Sq Ft	161 Sq M



FLOORS 2 - 25



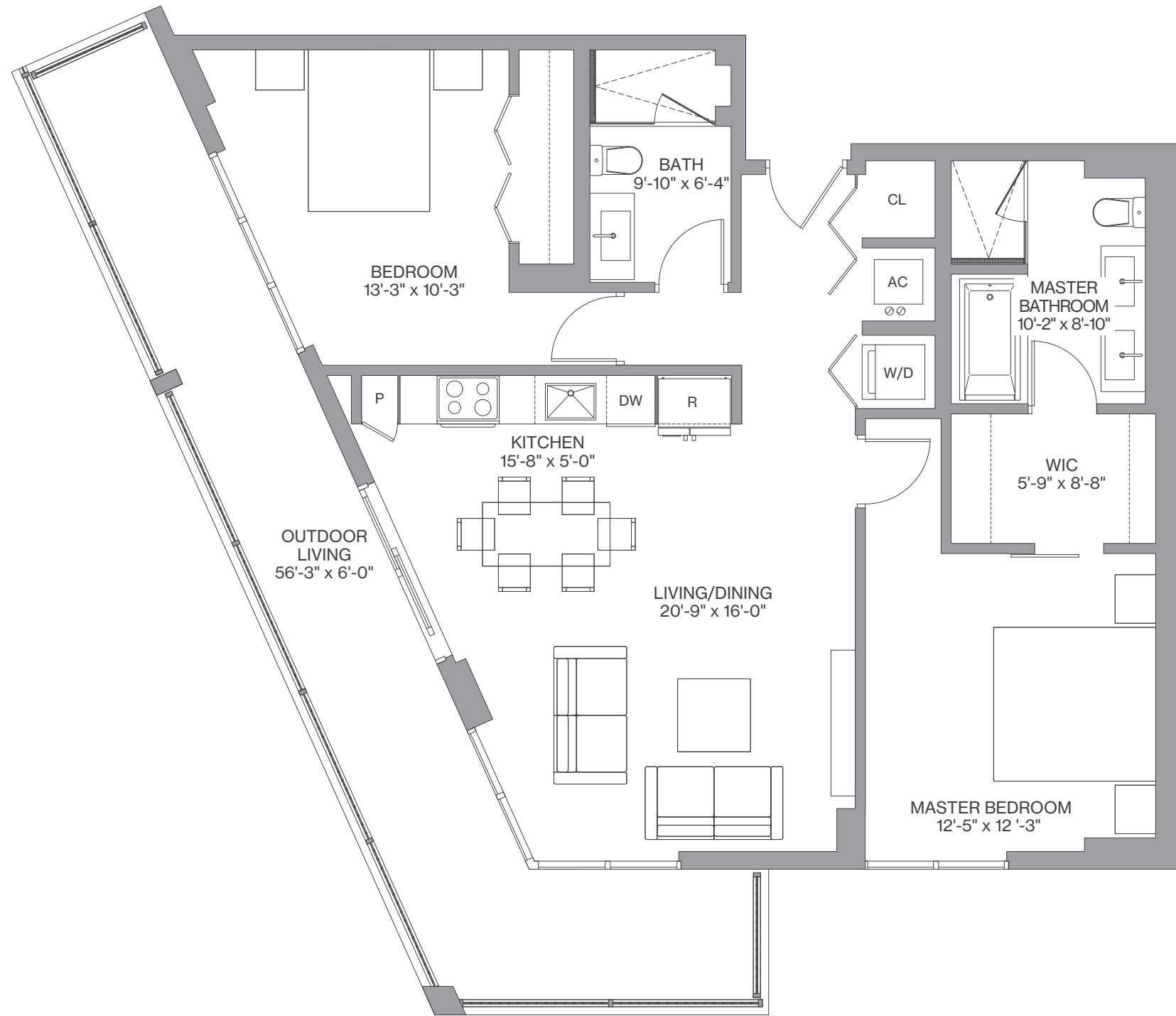
We are pledged to the letter and spirit of U.S. policy for the achievement of equal housing throughout the Nation. We encourage and support an affirmative advertising, marketing and sales program in which there are no barriers to obtaining housing because of race, color, sex, religion, handicap, familial status or national origin. Any stated square footages, dimensions and other measurements reflected herein are based on preliminary pre-construction plans, which are subject to change without notice and will vary with actual construction. Any stated square footages, dimensions and other measurements of units are measured to the exterior boundaries of the exterior walls and the centerline of interior demising walls between units and will vary from the dimensions of the unit that would be determined by using the description and definition of the "Unit" as set forth in the Declaration of Condominium (the "Declaration") for the Condominium (which generally only includes the interior airspace between the perimeter walls and excludes all interior structural components and other common elements). This method of measurement is generally used in sales materials and is provided to allow a prospective purchaser to compare the units in the Condominium with units in other condominium projects that utilize the same method. Terraces, patios and balconies are not part of the unit. Measurements and dimensions of rooms are generally taken at the farthest points of each given room (as if the room were a perfect rectangle), without regard for any cutouts, soffits or other variations. Accordingly, the square footage of the actual room will typically be smaller than the product obtained by multiplying the stated length and width. For the square footage of the units based on the definition of "Unit" in the Declaration, refer to Exhibit "2" to the Declaration included in the Condominium Documents. Each purchaser is advised that there are various methods for calculating the square footage of a Unit, and that, depending on the method of calculation, the quoted square footage of a Unit in advertising materials may vary from the square footage quoted in the Prospectus and Declaration. The dimensions of the Unit shown in these floor plans have been calculated from the exterior boundaries of the exterior walls to the centerline of interior demising walls, including common elements such as structural walls and other interior structural components of the building, and in fact vary from the dimensions that would be determined by using the description and definition of the "Unit" set forth in the Prospectus and Declaration. The area of the Unit as defined in the Prospectus and Declaration is less than the square footage reflected here. Measurements of rooms set forth on this floor plan are generally taken at the greatest points (as if the room were a perfect rectangle), without regard for any cutouts, meaning the usable area of the actual room will typically be smaller than calculated by multiplying the length times width. All dimensions are approximate, may vary with actual construction, and are subject to development plans which may change. The furnishings and décor illustrated or depicted are not included with the purchase of the Unit. See Prospectus for information on what is offered with the Unit and the Unit square footage and dimensions.

B4 & B16 / Line 04

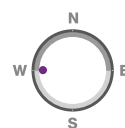
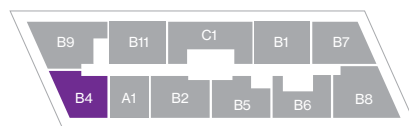
2 Bedrooms / 2 Baths

Floors: 2 - 26

Residence Interior	1,078 - 1,079 Sq Ft	100 -101 Sq M
Outdoor Living	313 - 315 Sq Ft	29 -30 Sq M
Total :	1,392 - 1,393 Sq Ft	129 - 131 Sq M



FLOORS 2 - 26



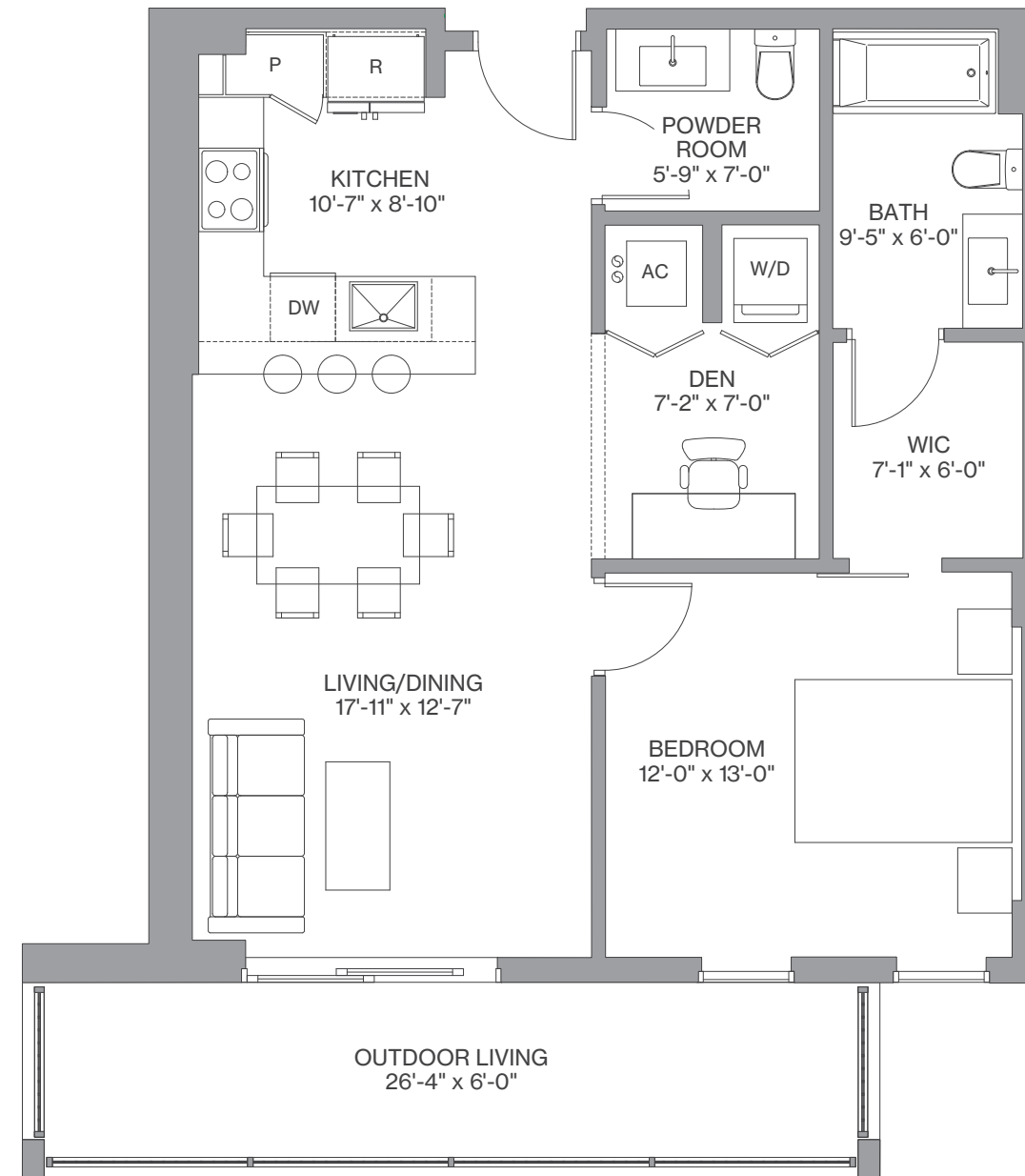
We are pledged to the letter and spirit of U.S. policy for the achievement of equal housing throughout the Nation. We encourage and support an affirmative advertising, marketing and sales program in which there are no barriers to obtaining housing because of race, color, sex, religion, handicap, familial status or national origin. Any stated square footages, dimensions and other measurements reflected herein are based on preliminary pre-construction plans, which are subject to change without notice and will vary with actual construction. Any stated square footages, dimensions and other measurements of units are measured to the exterior boundaries of the exterior walls and the centerline of interior demising walls between units and will vary from the dimensions of the unit that would be determined by using the description and definition of the "Unit" as set forth in the Declaration of Condominium (the "Declaration") for the Condominium (which generally only includes the interior airspace between the perimeter walls and excludes all interior structural components and other common elements). This method of measurement is generally used in sales materials and is provided to allow a prospective purchaser to compare the units in the Condominium with units in other condominium projects that utilize the same method. Terraces, patios and balconies are not part of the unit. Measurements and dimensions of rooms are generally taken at the farthest points of each given room (as if the room were a perfect rectangle), without regard for any cutouts, soffits or other variations. Accordingly, the square footage of the actual room will typically be smaller than the product obtained by multiplying the stated length and width. For the square footage of the units based on the definition of "Unit" in the Declaration, refer to Exhibit "2" to the Declaration included in the Condominium Documents. Each purchaser is advised that there are various methods for calculating the square footage of a Unit, and that, depending on the method of calculation, the quoted square footage of a Unit in advertising materials may vary from the square footage quoted in the Prospectus and Declaration. The dimensions of the Unit shown in these floor plans have been calculated from the exterior boundaries of the exterior walls to the centerline of interior demising walls, including common elements such as structural walls and other interior structural components of the building, and in fact vary from the dimensions that would be determined by using the description and definition of the "Unit" set forth in the Prospectus and Declaration. The area of the Unit as defined in the Prospectus and Declaration is less than the square footage reflected here. Measurements of rooms set forth on this floor plan are generally taken at the greatest points (as if the room were a perfect rectangle), without regard for any cutouts, meaning the usable area of the actual room will typically be smaller than calculated by multiplying the length times width. All dimensions are approximate, may vary with actual construction, and are subject to development plans which may change. The furnishings and décor illustrated or depicted are not included with the purchase of the Unit. See Prospectus for information on what is offered with the Unit and the Unit square footage and dimensions.

A1 & A8 / Line 05

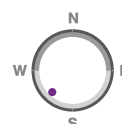
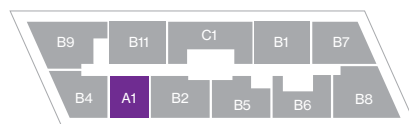
1 Bedroom / 1.5 Baths + Den

Floors: 2 - 26

Residence Interior	779 - 780 Sq Ft	72 - 73 Sq M
Outdoor Living	158 Sq Ft	15 Sq M
Total :	937 - 938 Sq Ft	87 - 88 Sq M



FLOORS 2 - 26



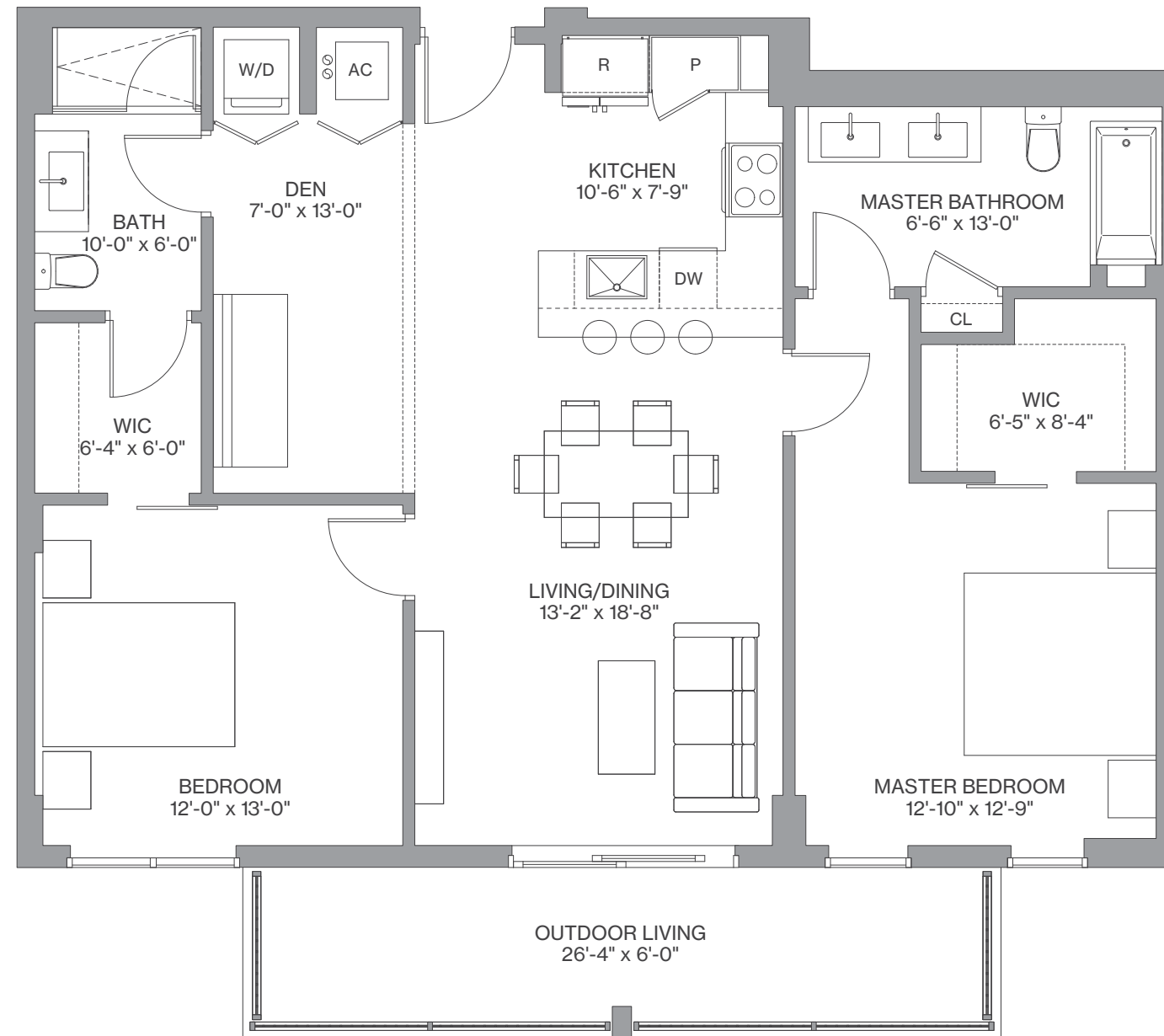
We are pledged to the letter and spirit of U.S. policy for the achievement of equal housing throughout the Nation. We encourage and support an affirmative advertising, marketing and sales program in which there are no barriers to obtaining housing because of race, color, sex, religion, handicap, familial status or national origin. Any stated square footages, dimensions and other measurements reflected herein are based on preliminary pre-construction plans, which are subject to change without notice and will vary with actual construction. Any stated square footages, dimensions and other measurements of units are measured to the exterior boundaries of the exterior walls and the centerline of interior demising walls between units and will vary from the dimensions of the unit that would be determined by using the description and definition of the "Unit" as set forth in the Declaration of Condominium (the "Declaration") for the Condominium (which generally only includes the interior airspace between the perimeter walls and excludes all interior structural components and other common elements). This method of measurement is generally used in sales materials and is provided to allow a prospective purchaser to compare the units in the Condominium with units in other condominium projects that utilize the same method. Terraces, patios and balconies are not part of the unit. Measurements and dimensions of rooms are generally taken at the farthest points of each given room (as if the room were a perfect rectangle), without regard for any cutouts, soffits or other variations. Accordingly, the square footage of the actual room will typically be smaller than the product obtained by multiplying the stated length and width. For the square footage of the units based on the definition of "Unit" in the Declaration, refer to Exhibit "2" to the Declaration included in the Condominium Documents. Each purchaser is advised that there are various methods for calculating the square footage of a Unit, and that, depending on the method of calculation, the quoted square footage of a Unit in advertising materials may vary from the square footage quoted in the Prospectus and Declaration. The dimensions of the Unit shown in these floor plans have been calculated from the exterior boundaries of the exterior walls to the centerline of interior demising walls, including common elements such as structural walls and other interior structural components of the building, and in fact vary from the dimensions that would be determined by using the description and definition of the "Unit" set forth in the Prospectus and Declaration. The area of the Unit as defined in the Prospectus and Declaration is less than the square footage reflected here. Measurements of rooms set forth on this floor plan are generally taken at the greatest points (as if the room were a perfect rectangle), without regard for any cutouts, meaning the usable area of the actual room will typically be smaller than calculated by multiplying the length times width. All dimensions are approximate, may vary with actual construction, and are subject to development plans which may change. The furnishings and décor illustrated or depicted are not included with the purchase of the Unit. See Prospectus for information on what is offered with the Unit and the Unit square footage and dimensions.

B2 & B15 / Line 06

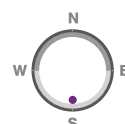
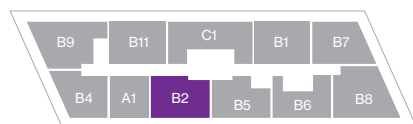
2 Bedrooms / 2 Baths + Den

Floors: 2 - 26

Residence Interior	1,131 - 1,136 Sq Ft	105 -106 Sq M
Outdoor Living	158 Sq Ft	15 Sq M
Total :	1,289 - 1,294 Sq Ft	120 - 121 Sq M



FLOORS 2 - 26



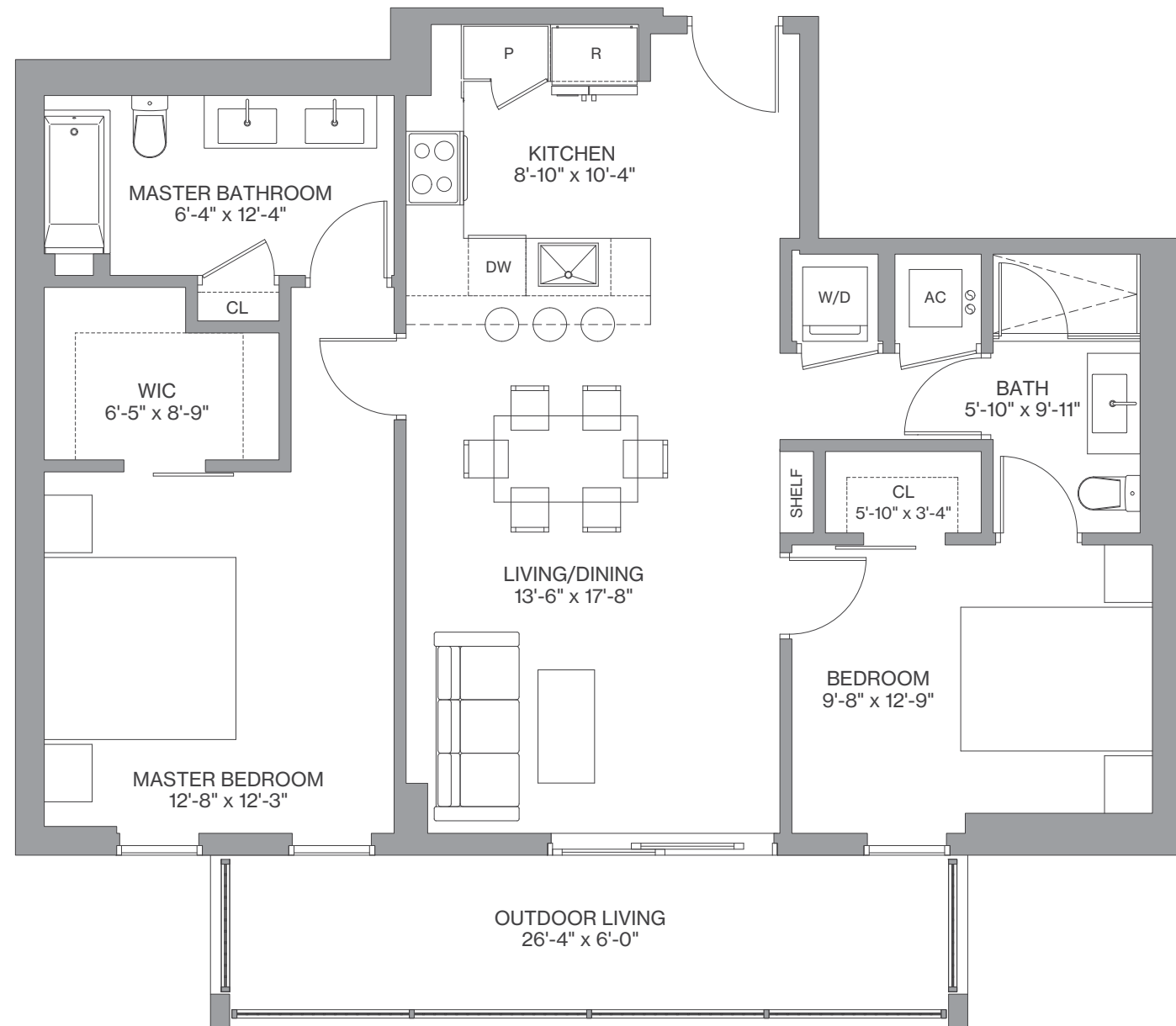
We are pledged to the letter and spirit of U.S. policy for the achievement of equal housing throughout the Nation. We encourage and support an affirmative advertising, marketing and sales program in which there are no barriers to obtaining housing because of race, color, sex, religion, handicap, familial status or national origin. Any stated square footages, dimensions and other measurements reflected herein are based on preliminary pre-construction plans, which are subject to change without notice and will vary with actual construction. Any stated square footages, dimensions and other measurements of units are measured to the exterior boundaries of the exterior walls and the centerline of interior demising walls between units and will vary from the dimensions of the unit that would be determined by using the description and definition of the "Unit" as set forth in the Declaration of Condominium (the "Declaration") for the Condominium (which generally only includes the interior airspace between the perimeter walls and excludes all interior structural components and other common elements). This method of measurement is generally used in sales materials and is provided to allow a prospective purchaser to compare the units in the Condominium with units in other condominium projects that utilize the same method. Terraces, patios and balconies are not part of the unit. Measurements and dimensions of rooms are generally taken at the farthest points of each given room (as if the room were a perfect rectangle), without regard for any cutouts, soffits or other variations. Accordingly, the square footage of the actual room will typically be smaller than the product obtained by multiplying the stated length and width. For the square footage of the units based on the definition of "Unit" in the Declaration, refer to Exhibit "2" to the Declaration included in the Condominium Documents. Each purchaser is advised that there are various methods for calculating the square footage of a Unit, and that, depending on the method of calculation, the quoted square footage of a Unit in advertising materials may vary from the square footage quoted in the Prospectus and Declaration. The dimensions of the Unit shown in these floor plans have been calculated from the exterior boundaries of the exterior walls to the centerline of interior demising walls, including common elements such as structural walls and other interior structural components of the building, and in fact vary from the dimensions that would be determined by using the description and definition of the "Unit" set forth in the Prospectus and Declaration. The area of the Unit as defined in the Prospectus and Declaration is less than the square footage reflected here. Measurements of rooms set forth on this floor plan are generally taken at the greatest points (as if the room were a perfect rectangle), without regard for any cutouts, meaning the usable area of the actual room will typically be smaller than calculated by multiplying the length times width. All dimensions are approximate, may vary with actual construction, and are subject to development plans which may change. The furnishings and décor illustrated or depicted are not included with the purchase of the Unit. See Prospectus for information on what is offered with the Unit and the Unit square footage and dimensions.

B5 & B17 / Line 07

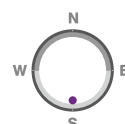
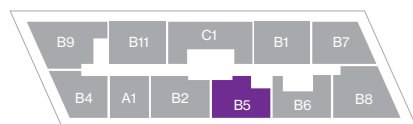
2 Bedrooms / 2 Baths

Floors: 2 - 26

Residence Interior	1,033 Sq Ft	96 Sq M
Outdoor Living	158 Sq Ft	15 Sq M
Total :	1,191 Sq Ft	111 Sq M



FLOORS 2 - 26



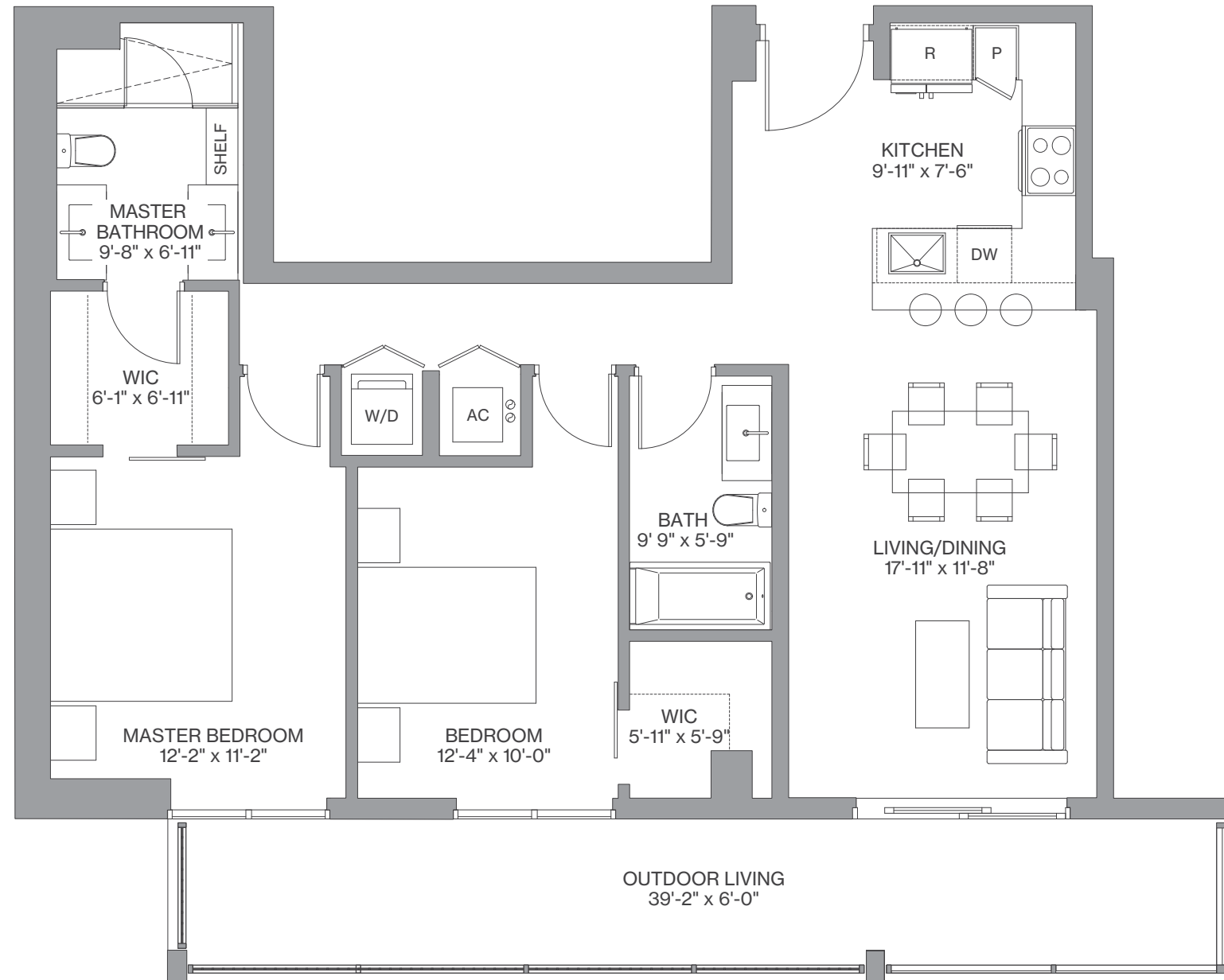
We are pledged to the letter and spirit of U.S. policy for the achievement of equal housing throughout the Nation. We encourage and support an affirmative advertising, marketing and sales program in which there are no barriers to obtaining housing because of race, color, sex, religion, handicap, familial status or national origin. Any stated square footages, dimensions and other measurements reflected herein are based on preliminary pre-construction plans, which are subject to change without notice and will vary with actual construction. Any stated square footages, dimensions and other measurements of units are measured to the exterior boundaries of the exterior walls and the centerline of interior demising walls between units and will vary from the dimensions of the unit that would be determined by using the description and definition of the "Unit" as set forth in the Declaration of Condominium (the "Declaration") for the Condominium (which generally only includes the interior airspace between the perimeter walls and excludes all interior structural components and other common elements). This method of measurement is generally used in sales materials and is provided to allow a prospective purchaser to compare the units in the Condominium with units in other condominium projects that utilize the same method. Terraces, patios and balconies are not part of the unit. Measurements and dimensions of rooms are generally taken at the farthest points of each given room (as if the room were a perfect rectangle), without regard for any cutouts, soffits or other variations. Accordingly, the square footage of the actual room will typically be smaller than the product obtained by multiplying the stated length and width. For the square footage of the units based on the definition of "Unit" in the Declaration, refer to Exhibit "2" to the Declaration included in the Condominium Documents. Each purchaser is advised that there are various methods for calculating the square footage of a Unit, and that, depending on the method of calculation, the quoted square footage of a Unit in advertising materials may vary from the square footage quoted in the Prospectus and Declaration. The dimensions of the Unit shown in these floor plans have been calculated from the exterior boundaries of the exterior walls to the centerline of interior demising walls, including common elements such as structural walls and other interior structural components of the building, and in fact vary from the dimensions that would be determined by using the description and definition of the "Unit" set forth in the Prospectus and Declaration. The area of the Unit as defined in the Prospectus and Declaration is less than the square footage reflected here. Measurements of rooms set forth on this floor plan are generally taken at the greatest points (as if the room were a perfect rectangle), without regard for any cutouts, meaning the usable area of the actual room will typically be smaller than calculated by multiplying the length times width. All dimensions are approximate, may vary with actual construction, and are subject to development plans which may change. The furnishings and décor illustrated or depicted are not included with the purchase of the Unit. See Prospectus for information on what is offered with the Unit and the Unit square footage and dimensions.

B6 / Line 08

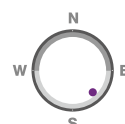
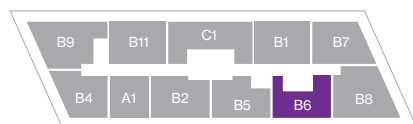
2 Bedrooms / 2 Baths

Floors: 9 - 26

Residence Interior	996 Sq Ft	93 Sq M
Outdoor Living	235 Sq Ft	22 Sq M
Total :	1,231 Sq Ft	114 Sq M



FLOORS 9 - 26



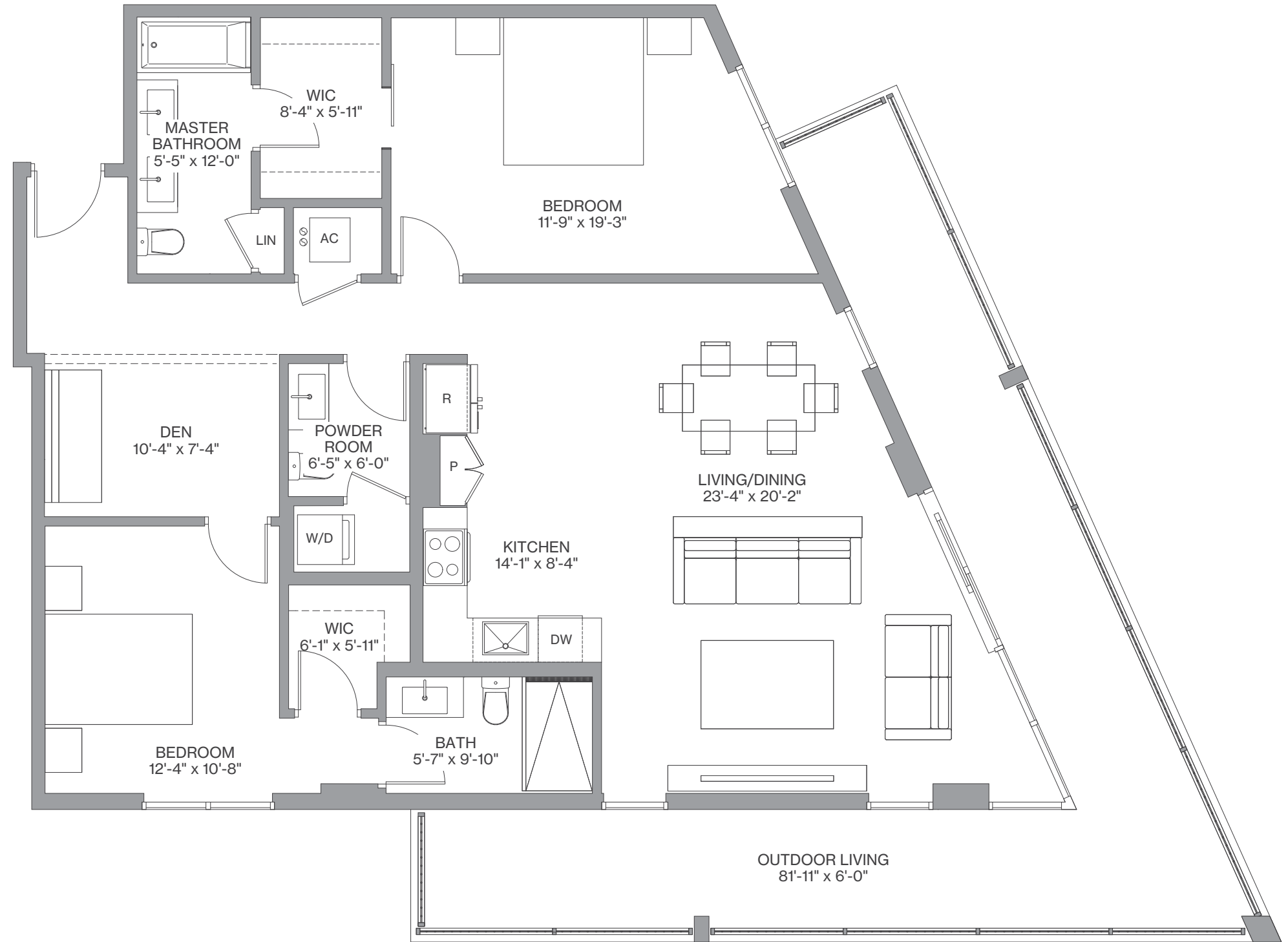
We are pledged to the letter and spirit of U.S. policy for the achievement of equal housing throughout the Nation. We encourage and support an affirmative advertising, marketing and sales program in which there are no barriers to obtaining housing because of race, color, sex, religion, handicap, familial status or national origin. Any stated square footages, dimensions and other measurements reflected herein are based on preliminary pre-construction plans, which are subject to change without notice and will vary with actual construction. Any stated square footages, dimensions and other measurements of units are measured to the exterior boundaries of the exterior walls and the centerline of interior demising walls between units and will vary from the dimensions of the unit that would be determined by using the description and definition of the "Unit" as set forth in the Declaration of Condominium (the "Declaration") for the Condominium (which generally only includes the interior airspace between the perimeter walls and excludes all interior structural components and other common elements). This method of measurement is generally used in sales materials and is provided to allow a prospective purchaser to compare the units in the Condominium with units in other condominium projects that utilize the same method. Terraces, patios and balconies are not part of the unit. Measurements and dimensions of rooms are generally taken at the farthest points of each given room (as if the room were a perfect rectangle), without regard for any cutouts, soffits or other variations. Accordingly, the square footage of the actual room will typically be smaller than the product obtained by multiplying the stated length and width. For the square footage of the units based on the definition of "Unit" in the Declaration, refer to Exhibit "2" to the Declaration included in the Condominium Documents. Each purchaser is advised that there are various methods for calculating the square footage of a Unit, and that, depending on the method of calculation, the quoted square footage of a Unit in advertising materials may vary from the square footage quoted in the Prospectus and Declaration. The dimensions of the Unit shown in these floor plans have been calculated from the exterior boundaries of the exterior walls to the centerline of interior demising walls, including common elements such as structural walls and other interior structural components of the building, and in fact vary from the dimensions that would be determined by using the description and definition of the "Unit" set forth in the Prospectus and Declaration. The area of the Unit as defined in the Prospectus and Declaration is less than the square footage reflected here. Measurements of rooms set forth on this floor plan are generally taken at the greatest points (as if the room were a perfect rectangle), without regard for any cutouts, meaning the usable area of the actual room will typically be smaller than calculated by multiplying the length times width. All dimensions are approximate, may vary with actual construction, and are subject to development plans which may change. The furnishings and décor illustrated or depicted are not included with the purchase of the Unit. See Prospectus for information on what is offered with the Unit and the Unit square footage and dimensions.

B8 / Line 09

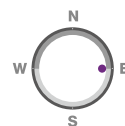
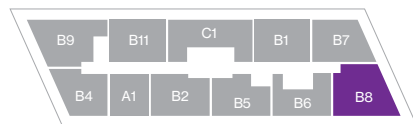
2 Bedrooms / 2.5 Baths + Den

Floors: 8 - 26

Residence Interior	1,382 Sq Ft	128 Sq M
Outdoor Living	436 Sq Ft	41 Sq M
Total :	1,818 Sq Ft	169 Sq M



FLOORS 8 - 26



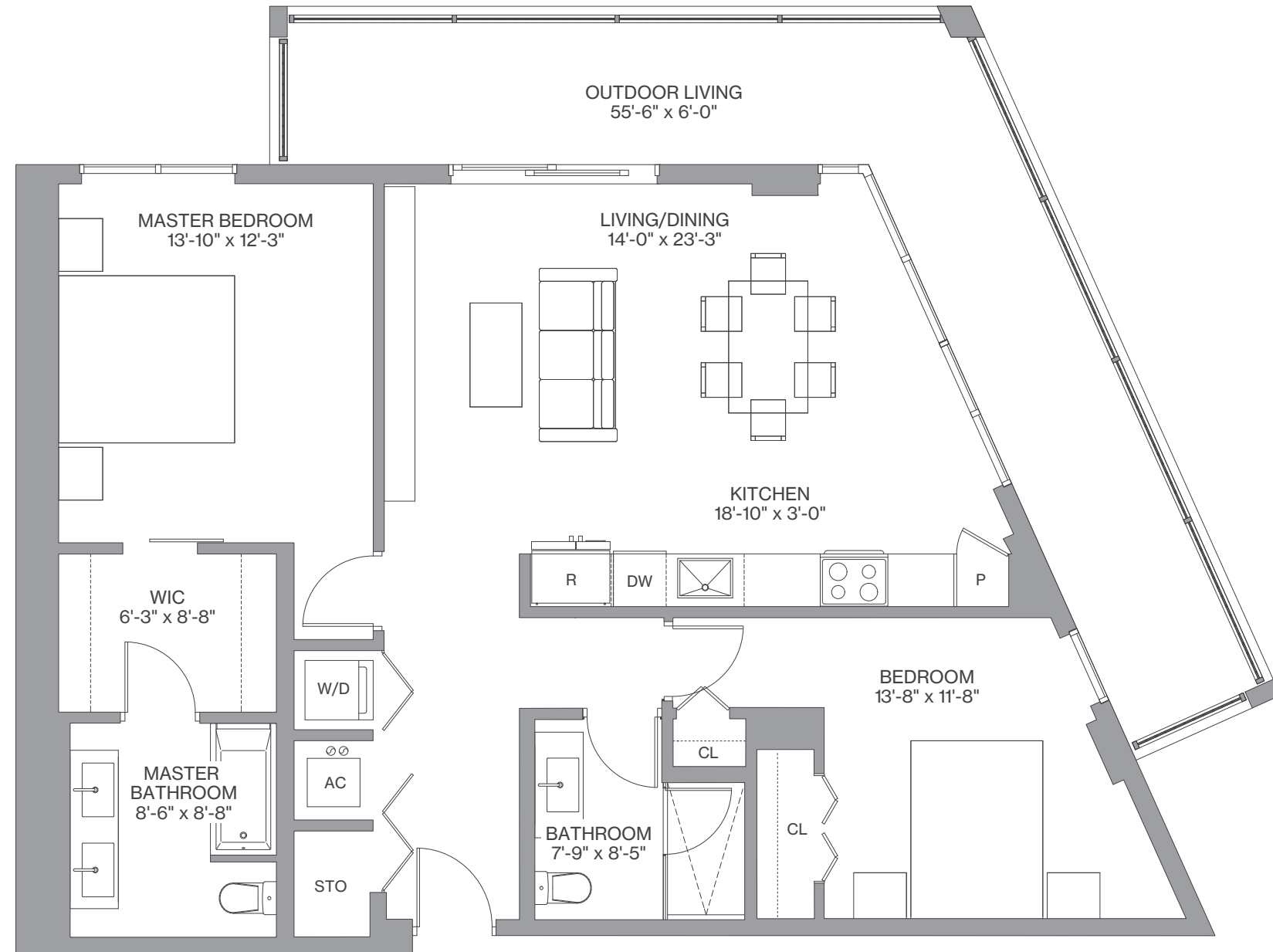
We are pledged to the letter and spirit of U.S. policy for the achievement of equal housing throughout the Nation. We encourage and support an affirmative advertising, marketing and sales program in which there are no barriers to obtaining housing because of race, color, sex, religion, handicap, familial status or national origin. Any stated square footages, dimensions and other measurements reflected herein are based on preliminary pre-construction plans, which are subject to change without notice and will vary with actual construction. Any stated square footages, dimensions and other measurements of units are measured to the exterior boundaries of the exterior walls and the centerline of interior demising walls between units and will vary from the dimensions of the unit that would be determined by using the description and definition of the "Unit" as set forth in the Declaration of Condominium (the "Declaration") for the Condominium (which generally only includes the interior airspace between the perimeter walls and excludes all interior structural components and other common elements). This method of measurement is generally used in sales materials and is provided to allow a prospective purchaser to compare the units in the Condominium with units in other condominium projects that utilize the same method. Terraces, patios and balconies are not part of the unit. Measurements and dimensions of rooms are generally taken at the farthest points of each given room (as if the room were a perfect rectangle), without regard for any cutouts, soffits or other variations. Accordingly, the square footage of the actual room will typically be smaller than the product obtained by multiplying the stated length and width. For the square footage of the units based on the definition of "Unit" in the Declaration, refer to Exhibit "2" to the Declaration included in the Condominium Documents. Each purchaser is advised that there are various methods for calculating the square footage of a Unit, and that, depending on the method of calculation, the quoted square footage of a Unit in advertising materials may vary from the square footage quoted in the Prospectus and Declaration. The dimensions of the Unit shown in these floor plans have been calculated from the exterior boundaries of the exterior walls to the centerline of interior demising walls, including common elements such as structural walls and other interior structural components of the building, and in fact vary from the dimensions that would be determined by using the description and definition of the "Unit" set forth in the Prospectus and Declaration. The area of the Unit as defined in the Prospectus and Declaration is less than the square footage reflected here. Measurements of rooms set forth on this floor plan are generally taken at the greatest points (as if the room were a perfect rectangle), without regard for any cutouts, meaning the usable area of the actual room will typically be smaller than calculated by multiplying the length times width. All dimensions are approximate, may vary with actual construction, and are subject to development plans which may change. The furnishings and décor illustrated or depicted are not included with the purchase of the Unit. See Prospectus for information on what is offered with the Unit and the Unit square footage and dimensions.

B7 / Line 10

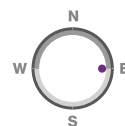
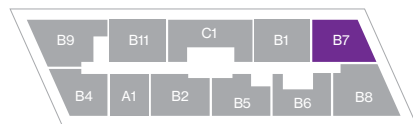
2 Bedrooms / 2 Baths


Floors: 8 - 26

Residence Interior	1,109 Sq Ft	103 Sq M
Outdoor Living	306 Sq Ft	28 Sq M
Total :	1,415 Sq Ft	131 Sq M



FLOORS 8 - 26



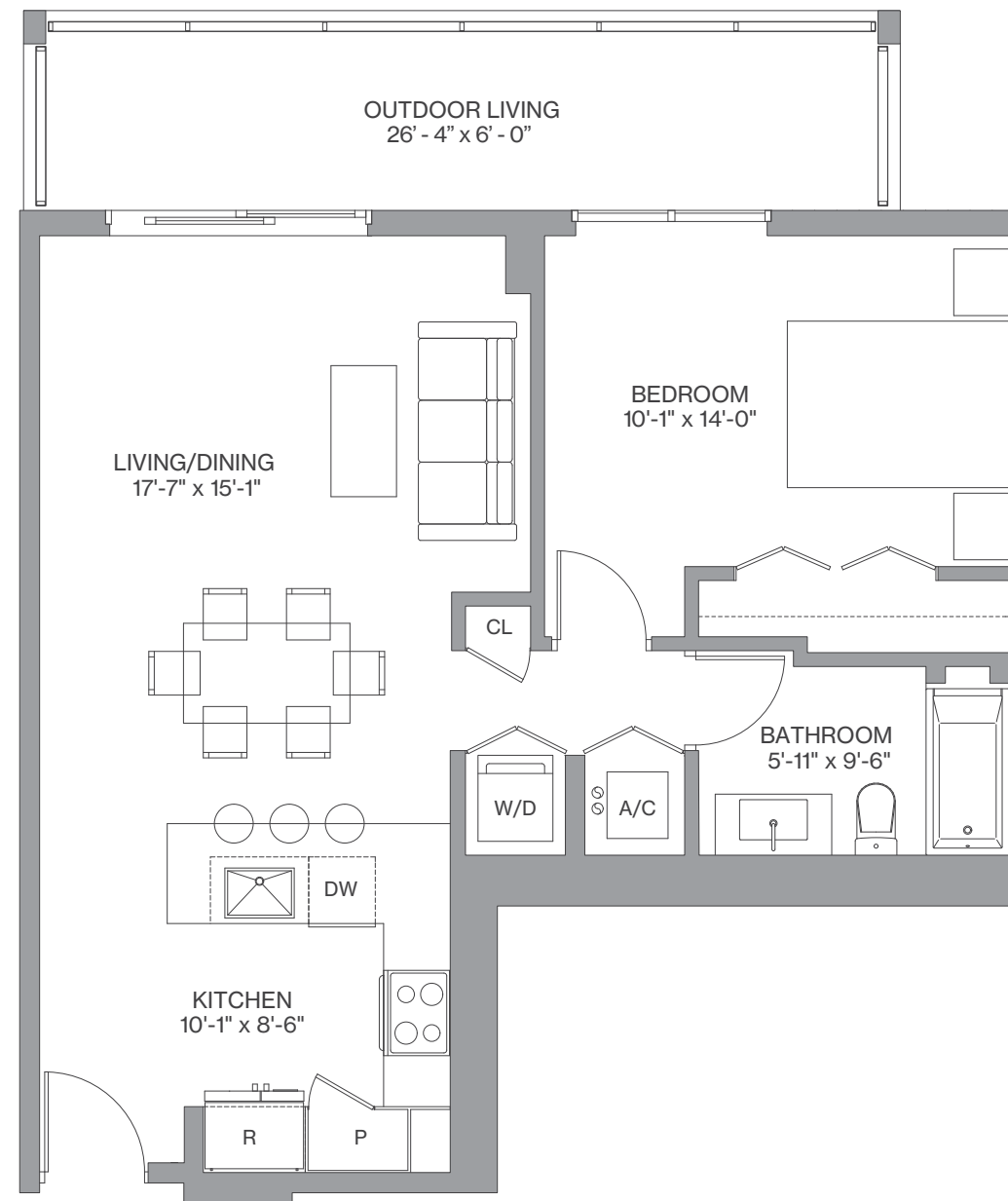
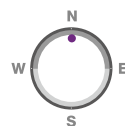
 We are pledged to the letter and spirit of U.S. policy for the achievement of equal housing throughout the Nation. We encourage and support an affirmative advertising, marketing and sales program in which there are no barriers to obtaining housing because of race, color, sex, religion, handicap, familial status or national origin. Any stated square footages, dimensions and other measurements reflected herein are based on preliminary pre-construction plans, which are subject to change without notice and will vary with actual construction. Any stated square footages, dimensions and other measurements of units are measured to the exterior boundaries of the exterior walls and the centerline of interior demising walls between units and will vary from the dimensions of the unit that would be determined by using the description and definition of the "Unit" as set forth in the Declaration of Condominium (the "Declaration") for the Condominium (which generally only includes the interior airspace between the perimeter walls and excludes all interior structural components and other common elements). This method of measurement is generally used in sales materials and is provided to allow a prospective purchaser to compare the units in the Condominium with units in other condominium projects that utilize the same method. Terraces, patios and balconies are not part of the unit. Measurements and dimensions of rooms are generally taken at the farthest points of each given room (as if the room were a perfect rectangle), without regard for any cutouts, soffits or other variations. Accordingly, the square footage of the actual room will typically be smaller than the product obtained by multiplying the stated length and width. For the square footage of the units based on the definition of "Unit" in the Declaration, refer to Exhibit "2" to the Declaration included in the Condominium Documents. Each purchaser is advised that there are various methods for calculating the square footage of a Unit, and that, depending on the method of calculation, the quoted square footage of a Unit in advertising materials may vary from the square footage quoted in the Prospectus and Declaration. The dimensions of the Unit shown in these floor plans have been calculated from the exterior boundaries of the exterior walls to the centerline of interior demising walls, including common elements such as structural walls and other interior structural components of the building, and in fact vary from the dimensions that would be determined by using the description and definition of the "Unit" set forth in the Prospectus and Declaration. The area of the Unit as defined in the Prospectus and Declaration is less than the square footage reflected here. Measurements of rooms set forth on this floor plan are generally taken at the greatest points (as if the room were a perfect rectangle), without regard for any cutouts, meaning the usable area of the actual room will typically be smaller than calculated by multiplying the length times width. All dimensions are approximate, may vary with actual construction, and are subject to development plans which may change. The furnishings and décor illustrated or depicted are not included with the purchase of the Unit. See Prospectus for information on what is offered with the Unit and the Unit square footage and dimensions.

A3 / Line 01

1 Bedroom / 1 Bath

Floors: 2 - 6

Residence Interior	725 SqFt	67 Sq M
Outdoor Living	156 SqFt	14 Sq M
Total :	881 Sq Ft	82 Sq M



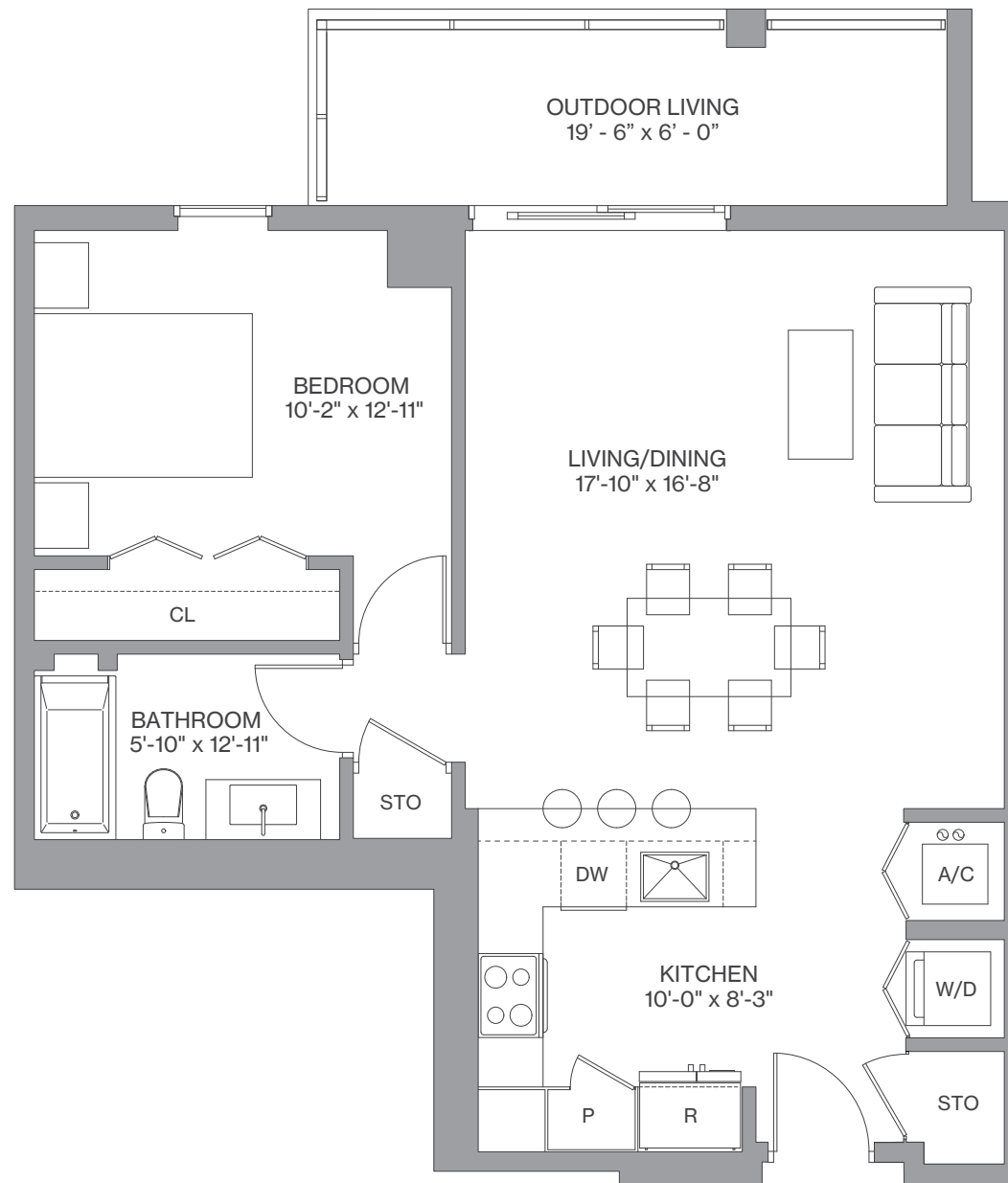
We are pledged to the letter and spirit of U.S. policy for the achievement of equal housing throughout the Nation. We encourage and support an affirmative advertising, marketing and sales program in which there are no barriers to obtaining housing because of race, color, sex, religion, handicap, familial status or national origin. Any stated square footages, dimensions and other measurements reflected herein are based on preliminary pre-construction plans, which are subject to change without notice and will vary with actual construction. Any stated square footages, dimensions and other measurements of units are measured to the exterior boundaries of the exterior walls and the centerline of interior demising walls between units and will vary from the dimensions of the unit that would be determined by using the description and definition of the "Unit" as set forth in the Declaration of Condominium (the "Declaration") for the Condominium (which generally only includes the interior airspace between the perimeter walls and excludes all interior structural components and other common elements). This method of measurement is generally used in sales materials and is provided to allow a prospective purchaser to compare the units in the Condominium with units in other condominium projects that utilize the same method. Terraces, patios and balconies are not part of the unit. Measurements and dimensions of rooms are generally taken at the farthest points of each given room (as if the room were a perfect rectangle), without regard for any cutouts, soffits or other variations. Accordingly, the square footage of the actual room will typically be smaller than the product obtained by multiplying the stated length and width. For the square footage of the units based on the definition of "Unit" in the Declaration, refer to Exhibit "2" to the Declaration included in the Condominium Documents. Each purchaser is advised that there are various methods for calculating the square footage of a Unit, and that, depending on the method of calculation, the quoted square footage of a Unit in advertising materials may vary from the square footage quoted in the Prospectus and Declaration. The dimensions of the Unit shown in these floor plans have been calculated from the exterior boundaries of the exterior walls to the centerline of interior demising walls, including common elements such as structural walls and other interior structural components of the building, and in fact vary from the dimensions that would be determined by using the description and definition of the "Unit" set forth in the Prospectus and Declaration. The area of the Unit as defined in the Prospectus and Declaration is less than the square footage reflected here. Measurements of rooms set forth on this floor plan are generally taken at the greatest points (as if the room were a perfect rectangle), without regard for any cutouts, meaning the usable area of the actual room will typically be smaller than calculated by multiplying the length times width. All dimensions are approximate, may vary with actual construction, and are subject to development plans which may change. The furnishings and décor illustrated or depicted are not included with the purchase of the Unit. See Prospectus for information on what is offered with the Unit and the Unit square footage and dimensions.


A4 / Line 12

1 Bedroom / 1 Bath

Floors: 2 - 6

Residence Interior	769 Sq Ft	71 Sq M
Outdoor Living	169 Sq Ft	16 Sq M
Total :	938 Sq Ft	87 Sq M



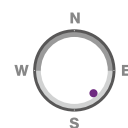
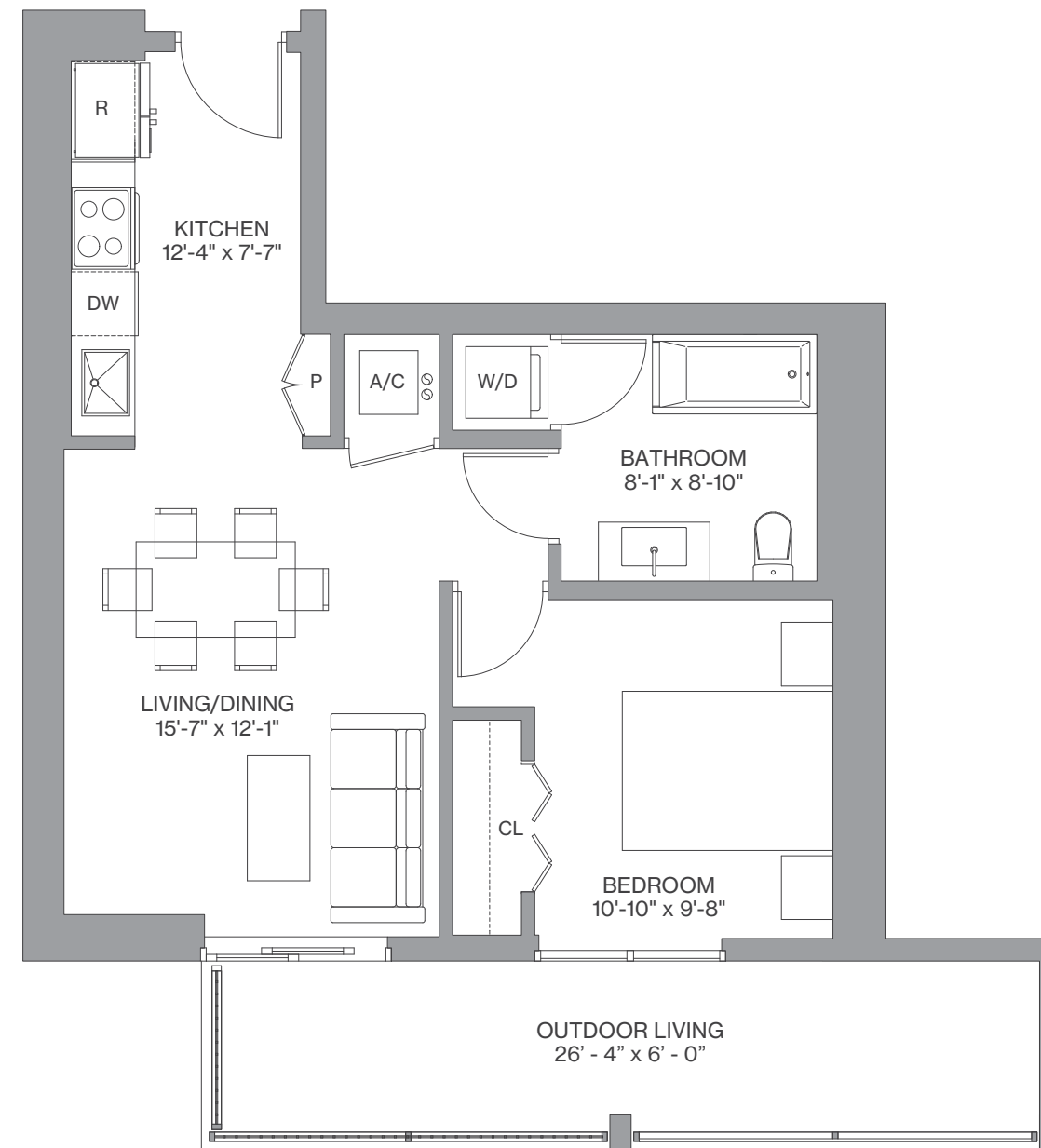
 We are pledged to the letter and spirit of U.S. policy for the achievement of equal housing throughout the Nation. We encourage and support an affirmative advertising, marketing and sales program in which there are no barriers to obtaining housing because of race, color, sex, religion, handicap, familial status or national origin. Any stated square footages, dimensions and other measurements reflected herein are based on preliminary pre-construction plans, which are subject to change without notice and will vary with actual construction. Any stated square footages, dimensions and other measurements of units are measured to the exterior boundaries of the exterior walls and the centerline of interior demising walls between units and will vary from the dimensions of the unit that would be determined by using the description and definition of the "Unit" as set forth in the Declaration of Condominium (the "Declaration") for the Condominium (which generally only includes the interior airspace between the perimeter walls and excludes all interior structural components and other common elements). This method of measurement is generally used in sales materials and is provided to allow a prospective purchaser to compare the units in the Condominium with units in other condominium projects that utilize the same method. Terraces, patios and balconies are not part of the unit. Measurements and dimensions of rooms are generally taken at the farthest points of each given room (as if the room were a perfect rectangle), without regard for any cutouts, soffits or other variations. Accordingly, the square footage of the actual room will typically be smaller than the product obtained by multiplying the stated length and width. For the square footage of the units based on the definition of "Unit" in the Declaration, refer to Exhibit "2" to the Declaration included in the Condominium Documents. Each purchaser is advised that there are various methods for calculating the square footage of a Unit, and that, depending on the method of calculation, the quoted square footage of a Unit in advertising materials may vary from the square footage quoted in the Prospectus and Declaration. The dimensions of the Unit shown in these floor plans have been calculated from the exterior boundaries of the exterior walls to the centerline of interior demising walls, including common elements such as structural walls and other interior structural components of the building, and in fact vary from the dimensions that would be determined by using the description and definition of the "Unit" set forth in the Prospectus and Declaration. The area of the Unit as defined in the Prospectus and Declaration is less than the square footage reflected here. Measurements of rooms set forth on this floor plan are generally taken at the greatest points (as if the room were a perfect rectangle), without regard for any cutouts, meaning the usable area of the actual room will typically be smaller than calculated by multiplying the length times width. All dimensions are approximate, may vary with actual construction, and are subject to development plans which may change. The furnishings and décor illustrated or depicted are not included with the purchase of the Unit. See Prospectus for information on what is offered with the Unit and the Unit square footage and dimensions.

A5 / Line 08

1 Bedroom / 1 Bath

Floors: 2 - 5

Residence Interior	609 Sq Ft	57 Sq M
Outdoor Living	158 Sq Ft	15 Sq M
Total :	767 Sq Ft	71 Sq M



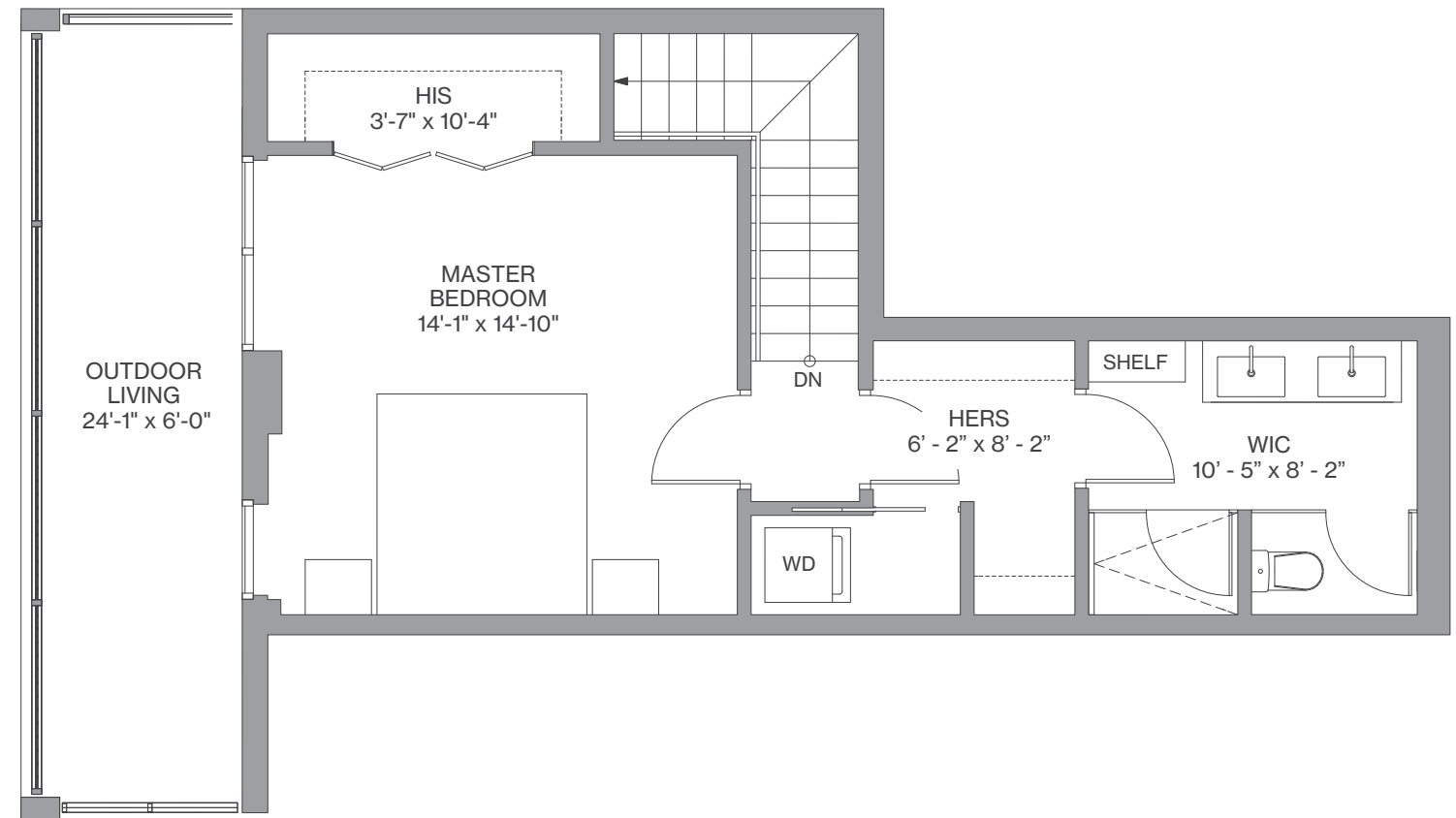
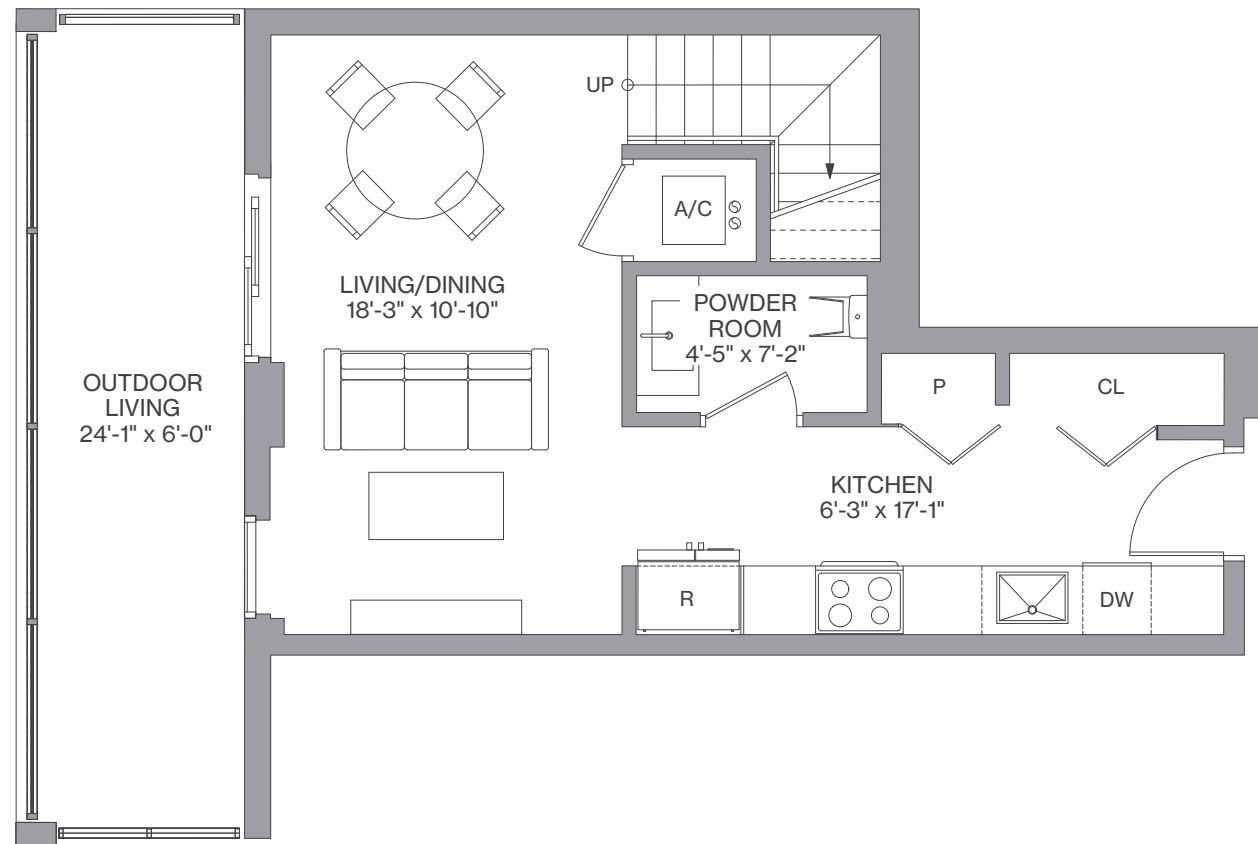
We are pledged to the letter and spirit of U.S. policy for the achievement of equal housing throughout the Nation. We encourage and support an affirmative advertising, marketing and sales program in which there are no barriers to obtaining housing because of race, color, sex, religion, handicap, familial status or national origin. Any stated square footages, dimensions and other measurements reflected herein are based on preliminary pre-construction plans, which are subject to change without notice and will vary with actual construction. Any stated square footages, dimensions and other measurements of units are measured to the exterior boundaries of the exterior walls and the centerline of interior demising walls between units and will vary from the dimensions of the unit that would be determined by using the description and definition of the "Unit" as set forth in the Declaration of Condominium (the "Declaration") for the Condominium (which generally only includes the interior airspace between the perimeter walls and excludes all interior structural components and other common elements). This method of measurement is generally used in sales materials and is provided to allow a prospective purchaser to compare the units in the Condominium with units in other condominium projects that utilize the same method. Terraces, patios and balconies are not part of the unit. Measurements and dimensions of rooms are generally taken at the farthest points of each given room (as if the room were a perfect rectangle), without regard for any cutouts, soffits or other variations. Accordingly, the square footage of the actual room will typically be smaller than the product obtained by multiplying the stated length and width. For the square footage of the units based on the definition of "Unit" in the Declaration, refer to Exhibit "2" to the Declaration included in the Condominium Documents. Each purchaser is advised that there are various methods for calculating the square footage of a Unit, and that, depending on the method of calculation, the quoted square footage of a Unit in advertising materials may vary from the square footage quoted in the Prospectus and Declaration. The dimensions of the Unit shown in these floor plans have been calculated from the exterior boundaries of the exterior walls to the centerline of interior demising walls, including common elements such as structural walls and other interior structural components of the building, and in fact vary from the dimensions that would be determined by using the description and definition of the "Unit" set forth in the Prospectus and Declaration. The area of the Unit as defined in the Prospectus and Declaration is less than the square footage reflected here. Measurements of rooms set forth on this floor plan are generally taken at the greatest points (as if the room were a perfect rectangle), without regard for any cutouts, meaning the usable area of the actual room will typically be smaller than calculated by multiplying the length times width. All dimensions are approximate, may vary with actual construction, and are subject to development plans which may change. The furnishings and décor illustrated or depicted are not included with the purchase of the Unit. See Prospectus for information on what is offered with the Unit and the Unit square footage and dimensions.

A6 / Line 17

1 Bedroom / 1 Bath

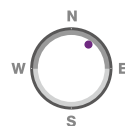
Floors: 2 - 4

Residence Interior	920 Sq Ft	85 Sq M
Outdoor Living	322 Sq Ft	30 Sq M
Total :	1,242 Sq Ft	115 Sq M



Lower

Upper



We are pledged to the letter and spirit of U.S. policy for the achievement of equal housing throughout the Nation. We encourage and support an affirmative advertising, marketing and sales program in which there are no barriers to obtaining housing because of race, color, sex, religion, handicap, familial status or national origin. Any stated square footages, dimensions and other measurements reflected herein are based on preliminary pre-construction plans, which are subject to change without notice and will vary with actual construction. Any stated square footages, dimensions and other measurements of units are measured to the exterior boundaries of the exterior walls and the centerline of interior demising walls between units and will vary from the dimensions of the unit that would be determined by using the description and definition of the "Unit" as set forth in the Declaration of Condominium (the "Declaration") for the Condominium (which generally only includes the interior airspace between the perimeter walls and excludes all interior structural components and other common elements). This method of measurement is generally used in sales materials and is provided to allow a prospective purchaser to compare the units in the Condominium with units in other condominium projects that utilize the same method. Terraces, patios and balconies are not part of the unit. Measurements and dimensions of rooms are generally taken at the farthest points of each given room (as if the room were a perfect rectangle), without regard for any cutouts, soffits or other variations. Accordingly, the square footage of the actual room will typically be smaller than the product obtained by multiplying the stated length and width. For the square footage of the units based on the definition of "Unit" in the Declaration, refer to Exhibit "2" to the Declaration included in the Condominium Documents. Each purchaser is advised that there are various methods for calculating the square footage of a Unit, and that, depending on the method of calculation, the quoted square footage of a Unit in advertising materials may vary from the square footage quoted in the Prospectus and Declaration. The dimensions of the Unit shown in these floor plans have been calculated from the exterior boundaries of the exterior walls to the centerline of interior demising walls, including common elements such as structural walls and other interior structural components of the building, and in fact vary from the dimensions that would be determined by using the description and definition of the "Unit" set forth in the Prospectus and Declaration. The area of the Unit as defined in the Prospectus and Declaration is less than the square footage reflected here. Measurements of rooms set forth on this floor plan are generally taken at the greatest points (as if the room were a perfect rectangle), without regard for any cutouts, meaning the usable area of the actual room will typically be smaller than calculated by multiplying the length times width. All dimensions are approximate, may vary with actual construction, and are subject to development plans which may change. The furnishings and décor illustrated or depicted are not included with the purchase of the Unit. See Prospectus for information on what is offered with the Unit and the Unit square footage and dimensions.