

UNIT A

THE ATLANTIC

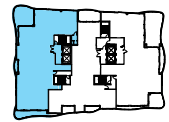
3 Bedroom • 3.5 Bath
3 Balconies

3,817 A/C Sq. Ft.

718 Balcony Sq. Ft.

4,535 Total Sq. Ft.

INTRACOASTAL
WATERWAY



ATLANTIC OCEAN

5th-10th FLOOR
N ▶



RESIDENCES: 321 NORTH BIRCH ROAD • FT. LAUDERDALE FLORIDA 33304
SALES OFFICE: 2400 E LAS OLAS BLVD • FT. LAUDERDALE FLORIDA 33301
855-920-9813 • 321FORTLAUDERDALE.COM

Stated square footages and dimensions of units are based on measurements to the exterior boundaries of the exterior walls and the centerline of interior demising walls between units and will vary from the square footages and dimensions of the unit that would be determined by using the description and definition of the "Unit" set forth in the Declaration (which generally only includes the interior airspace between the perimeter walls and excludes interior structural components and other common elements). This method of measurement is generally used in sales and marketing materials and is provided to allow a prospective buyer to compare the Units with 3 units in other condominium projects that utilize the same method. For your reference, the square footage of the Unit, determined in accordance with the definition of the "Unit" set forth in the Declaration, is + or - 3,817 sq. ft. for unit type A. Terraces, patios, balconies, yards and private garages are not part of the "Unit". Measurements and dimensions of rooms set forth on this floor plan are generally taken at the farthest points of each given room (as if the room were a perfect rectangle), without regard for any cutouts, soffits or other variations. Accordingly, the square footage of the actual room will typically be smaller than the product obtained by multiplying the stated length times width. All square footages, dimensions and measurements are estimates which are based on preliminary plans and will vary with actual construction. All floor plans, specifications and other development plans are proposed and conceptual only, and are subject to change and will not necessarily accurately reflect the final plans and specifications.

Developed by
321 Birch, LLC

Interiors
Interior Design by Steven G. Mc

Exclusively Offered by

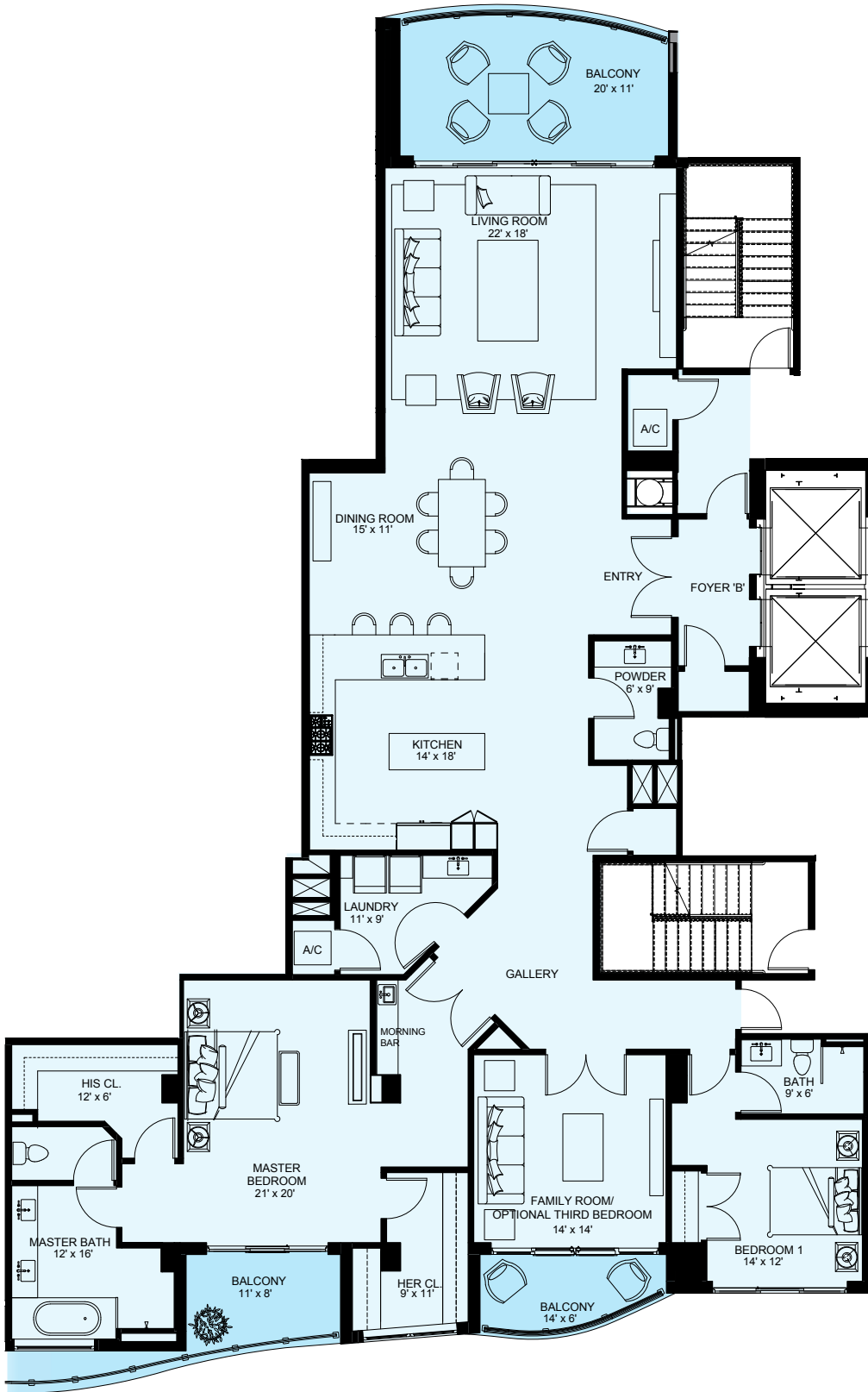
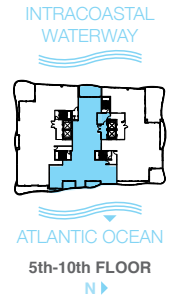
ENGEL & VÖLKERS

UNIT B

THE PACIFIC

2 Bedroom • 2.5 Bath
Family Room/Optional
Third Bedroom
3 Balconies

2,805 A/C Sq. Ft.
375 Balcony Sq. Ft.
3,180 Total Sq. Ft.



RESIDENCES: 321 NORTH BIRCH ROAD • FT. LAUDERDALE FLORIDA 33304
SALES OFFICE: 2400 E LAS OLAS BLVD • FT. LAUDERDALE FLORIDA 33301
855-920-9813 • 321FORTLAUDERDALE.COM

Stated square footages and dimensions of units are based on measurements to the exterior boundaries of the exterior walls and the centerline of interior demising walls between units and will vary from the square footages and dimensions of the unit that would be determined by using the description and definition of the "Unit" set forth in the Declaration (which generally only includes the interior airspace between the perimeter walls and excludes interior structural components and other common elements). This method of measurement is generally used in sales and marketing materials and is provided to allow a prospective buyer to compare the Units with 3 units in other condominium projects that utilize the same method. For your reference, the square footage of the Unit, determined in accordance with the definition of the "Unit" set forth in the Declaration, is + or -2,805 sq. ft. for unit type B. Terraces, patios, balconies, yards and private garages are not part of the "Unit". Measurements and dimensions of rooms set forth on this floor plan are generally taken at the farthest points of each given room (as if the room were a perfect rectangle), without regard for any cutouts, soffits or other variations. Accordingly, the square footage of the actual room will typically be smaller than the product obtained by multiplying the stated length times width. All square footages, dimensions and measurements are estimates which are based on preliminary plans and will vary with actual construction. All floor plans, specifications and other development plans are proposed and conceptual only, and are subject to change and will not necessarily accurately reflect the final plans and specifications.

Developed by
321 Birch, LLC

Interiors
Interior Design
by Steven G. Mc

Exclusively Offered by
ENGEL & VÖLKERS

UNIT C

THE CARIBBEAN

3 Bedroom • 3.5 Bath

3 Balconies

3,429 A/C Sq. Ft.

979 Balcony Sq. Ft.

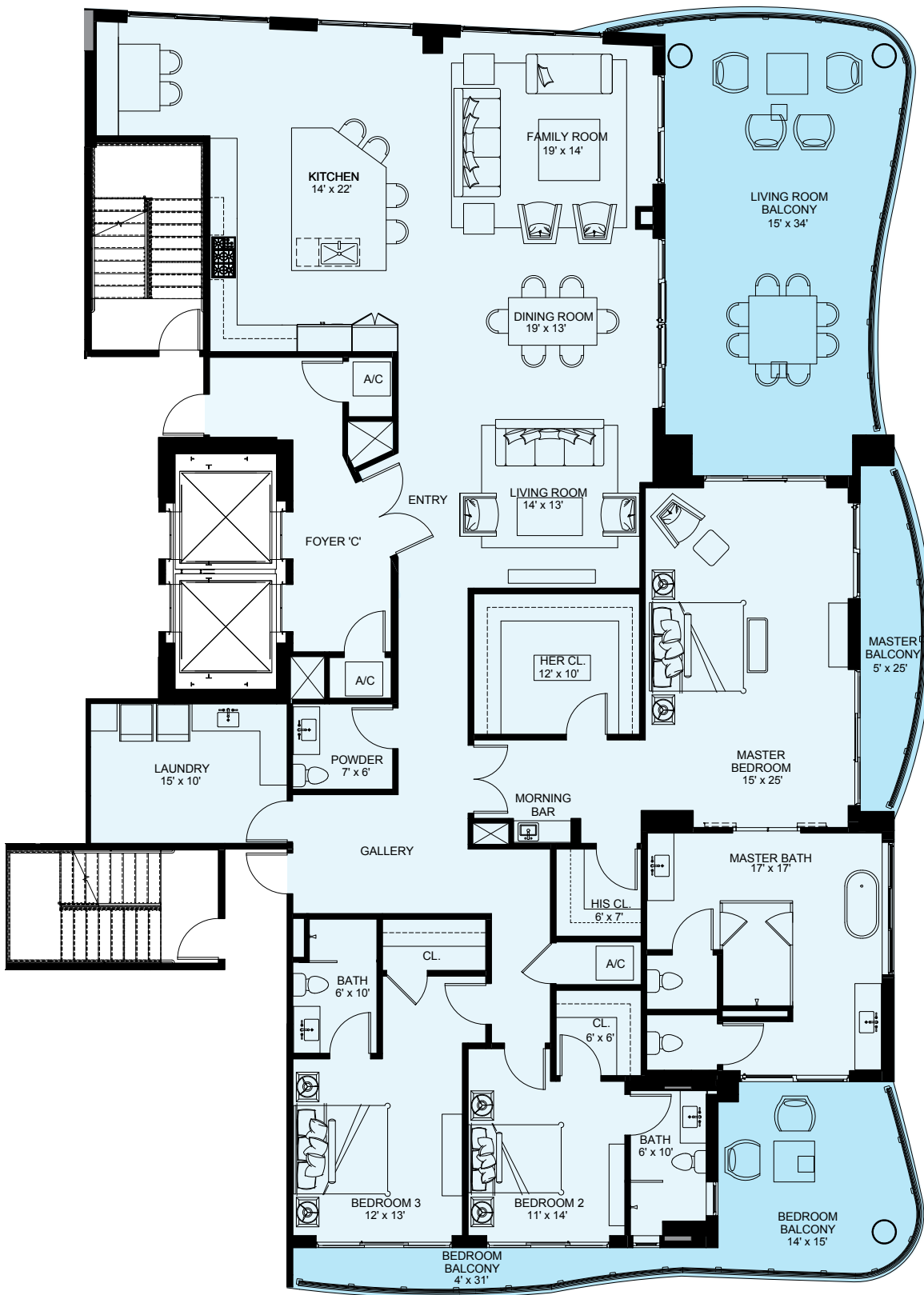
4,408 Total Sq. Ft.

INTRACOASTAL
WATERWAY



ATLANTIC OCEAN

5th-10th FLOOR



RESIDENCES: 321 NORTH BIRCH ROAD • FT. LAUDERDALE FLORIDA 33304
SALES OFFICE: 2400 E LAS OLAS BLVD • FT. LAUDERDALE FLORIDA 33301
 855-920-9813 • 321FORTLAUDERDALE.COM

Stated square footages and dimensions of units are based on measurements to the exterior boundaries of the exterior walls and the centerline of interior demising walls between units and will vary from the square footages and dimensions of the unit that would be determined by using the description and definition of the "Unit" set forth in the Declaration (which generally only includes the interior airspace between the perimeter walls and excludes interior structural components and other common elements). This method of measurement is generally used in sales and marketing materials and is provided to allow a prospective buyer to compare the Units with 3 units in other condominium projects that utilize the same method. For your reference, the square footage of the Unit, determined in accordance with the definition of the "Unit" set forth in the Declaration, is + or - 3,429 sq. ft. for unit type C. Terraces, patios, balconies, yards and private garages are not part of the "Unit". Measurements and dimensions of rooms set forth on this floor plan are generally taken at the farthest points of each given room (as if the room were a perfect rectangle), without regard for any cutouts, soffits or other variations. Accordingly, the square footage of the actual room will typically be smaller than the product obtained by multiplying the stated length times width. All square footages, dimensions and measurements are estimates which are based on preliminary plans and will vary with actual construction. All floor plans, specifications and other development plans are proposed and conceptual only, and are subject to change and will not necessarily accurately reflect the final plans and specifications.

Developed by
321 Birch, LLC

Interiors
Interior Design by Steven G. Mc

Exclusively Offered by

ENGEL & VÖLKERS

PENTHOUSE **D**

THE ADRIATIC

3 Bedroom • 3.5 Bath

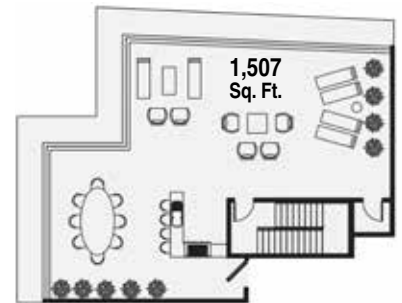
Balcony • Skyview Terrace

3,584 A/C Sq. Ft.

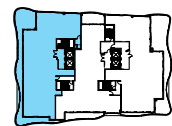
2,575 Balcony/Terrace Sq. Ft.

6,159 Total Sq. Ft.

Skyview Terrace

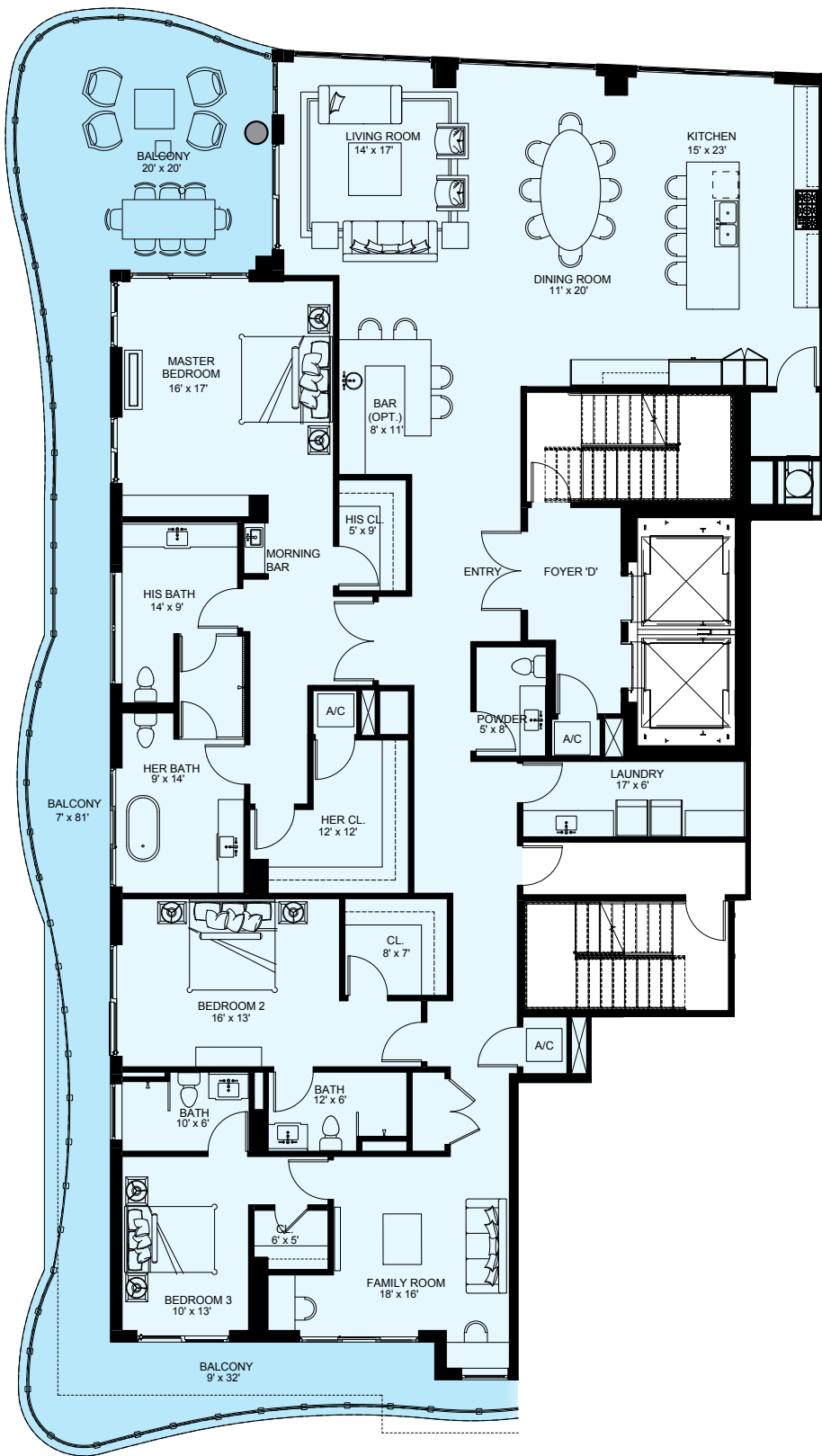


INTRACOASTAL
WATERWAY



ATLANTIC OCEAN

11th FLOOR



RESIDENCES: 321 NORTH BIRCH ROAD • FT. LAUDERDALE FLORIDA 33304
SALES OFFICE: 2400 E LAS OLAS BLVD • FT. LAUDERDALE FLORIDA 33301
 855-920-9813 • 321FORTLAUDERDALE.COM

Stated square footages and dimensions of units are based on measurements to the exterior boundaries of the exterior walls and the centerline of interior demising walls between units and will vary from the square footages and dimensions of the unit that would be determined by using the description and definition of the "Unit" set forth in the Declaration (which generally only includes the interior airspace between the perimeter walls and excludes interior structural components and other common elements). This method of measurement is generally used in sales and marketing materials and is provided to allow a prospective buyer to compare the Units with 3 units in other condominium projects that utilize the same method. For your reference, the square footage of the Unit, determined in accordance with the definition of the "Unit" set forth in the Declaration, is + or - 3,584 sq. ft. for unit type D. Terraces, patios, balconies, yards and private garages are not part of the "Unit". Measurements and dimensions of rooms set forth on this floor plan are generally taken at the farthest points of each given room (as if the room were a perfect rectangle), without regard for any cutouts, soffits or other variations. Accordingly, the square footage of the actual room will typically be smaller than the product obtained by multiplying the stated length times width. All square footages, dimensions and measurements are estimates which are based on preliminary plans and will vary with actual construction. All floor plans, specifications and other development plans are proposed and conceptual only, and are subject to change and will not necessarily accurately reflect the final plans and specifications.

Developed by
321 Birch, LLC

Interiors
Interior Design
by Steven G. Mc

Exclusively Offered by
ENGEL & VÖLKERS

PENTHOUSE **E**

THE MEDITERRANEAN

2 Bedroom • 2.5 Bath

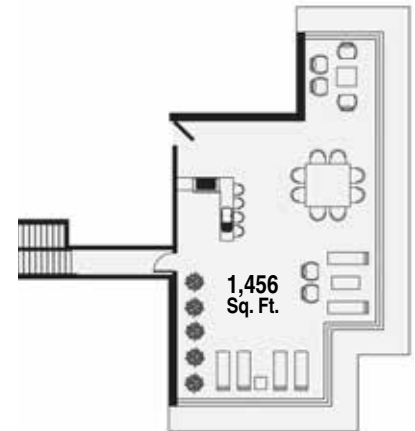
2 Balconies • Skyview Terrace

2,663 A/C Sq. Ft.

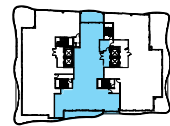
1,900 Balcony/Terrace Sq. Ft.

4,563 Total Sq. Ft.

Skyview Terrace

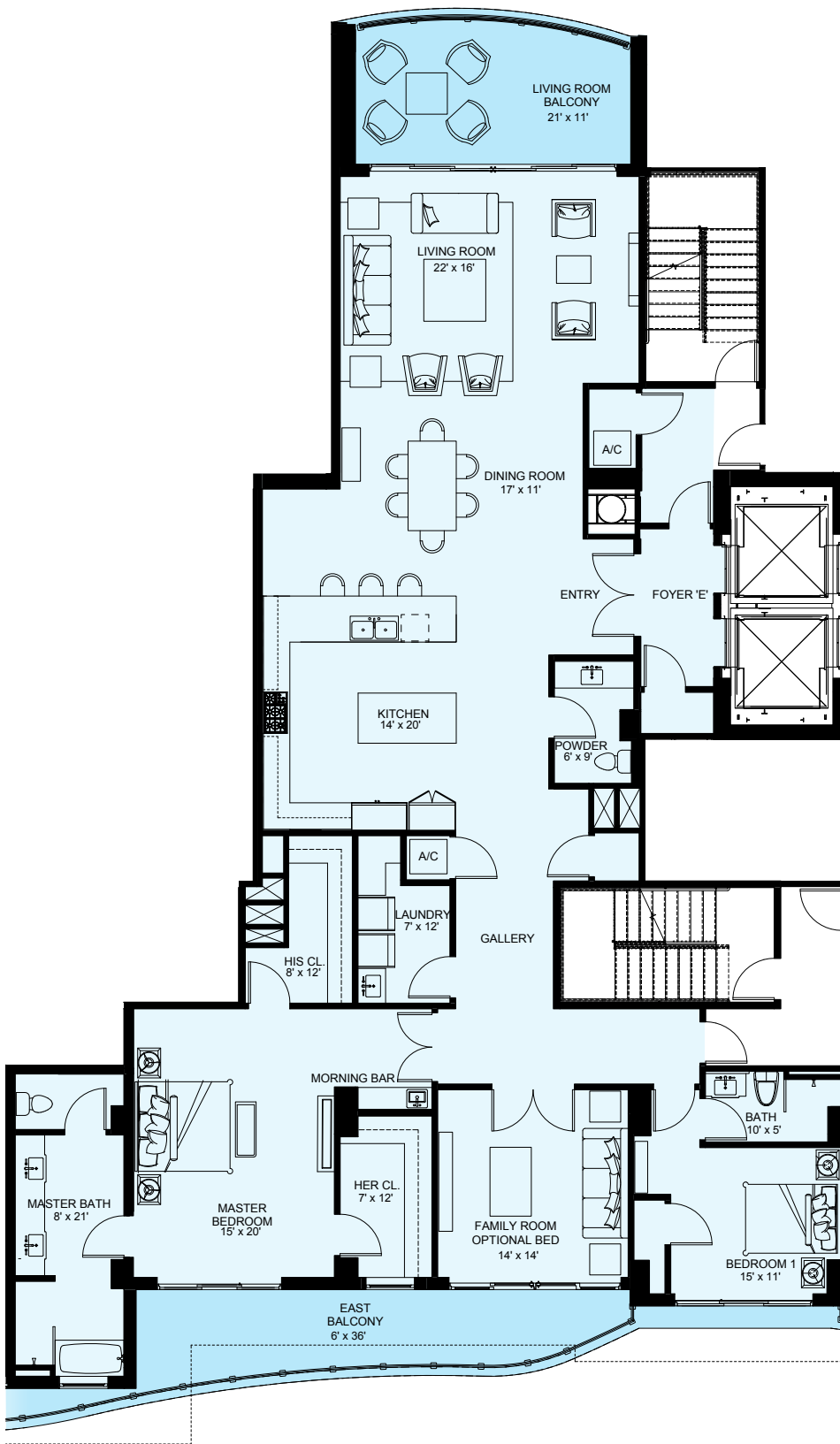


INTRACOASTAL
WATERWAY



ATLANTIC OCEAN

11th FLOOR



RESIDENCES: 321 NORTH BIRCH ROAD • FT. LAUDERDALE FLORIDA 33304
SALES OFFICE: 2400 E LAS OLAS BLVD • FT. LAUDERDALE FLORIDA 33301
 855-920-9813 • 321FORTLAUDERDALE.COM

Stated square footages and dimensions of units are based on measurements to the exterior boundaries of the exterior walls and the centerline of interior demising walls between units and will vary from the square footages and dimensions of the unit that would be determined by using the description and definition of the "Unit" set forth in the Declaration (which generally only includes the interior airspace between the perimeter walls and excludes interior structural components and other common elements). This method of measurement is generally used in sales and marketing materials and is provided to allow a prospective buyer to compare the Units with 3 units in other condominium projects that utilize the same method. For your reference, the square footage of the Unit, determined in accordance with the definition of the "Unit" set forth in the Declaration, is + or - 2,663 sq. ft. for unit type E. Terraces, patios, balconies, yards and private garages are not part of the "Unit". Measurements and dimensions of rooms set forth on this floor plan are generally taken at the farthest points of each given room (as if the room were a perfect rectangle), without regard for any cutouts, soffits or other variations. Accordingly, the square footage of the actual room will typically be smaller than the product obtained by multiplying the stated length times width. All square footages, dimensions and measurements are estimates which are based on preliminary plans and will vary with actual construction. All floor plans, specifications and other development plans are proposed and conceptual only, and are subject to change and will not necessarily accurately reflect the final plans and specifications.

Developed by
321 Birch, LLC

Interiors
Interior Design by Steven G. Mc

Exclusively Offered by
ENGEL & VÖLKERS

PENTHOUSE **F**

THE BALTIC

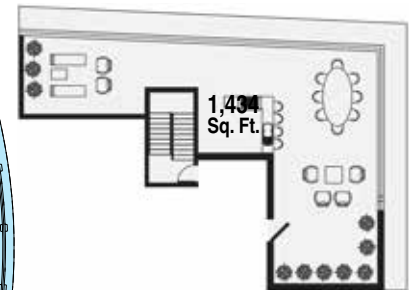
3 Bedroom • 3.5 Bath
Balcony • Skyview Terrace

3,282 A/C Sq. Ft.

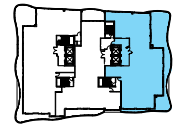
2,569 Balcony/Terrace Sq. Ft.

5,851 Total Sq. Ft.

Skyview Terrace

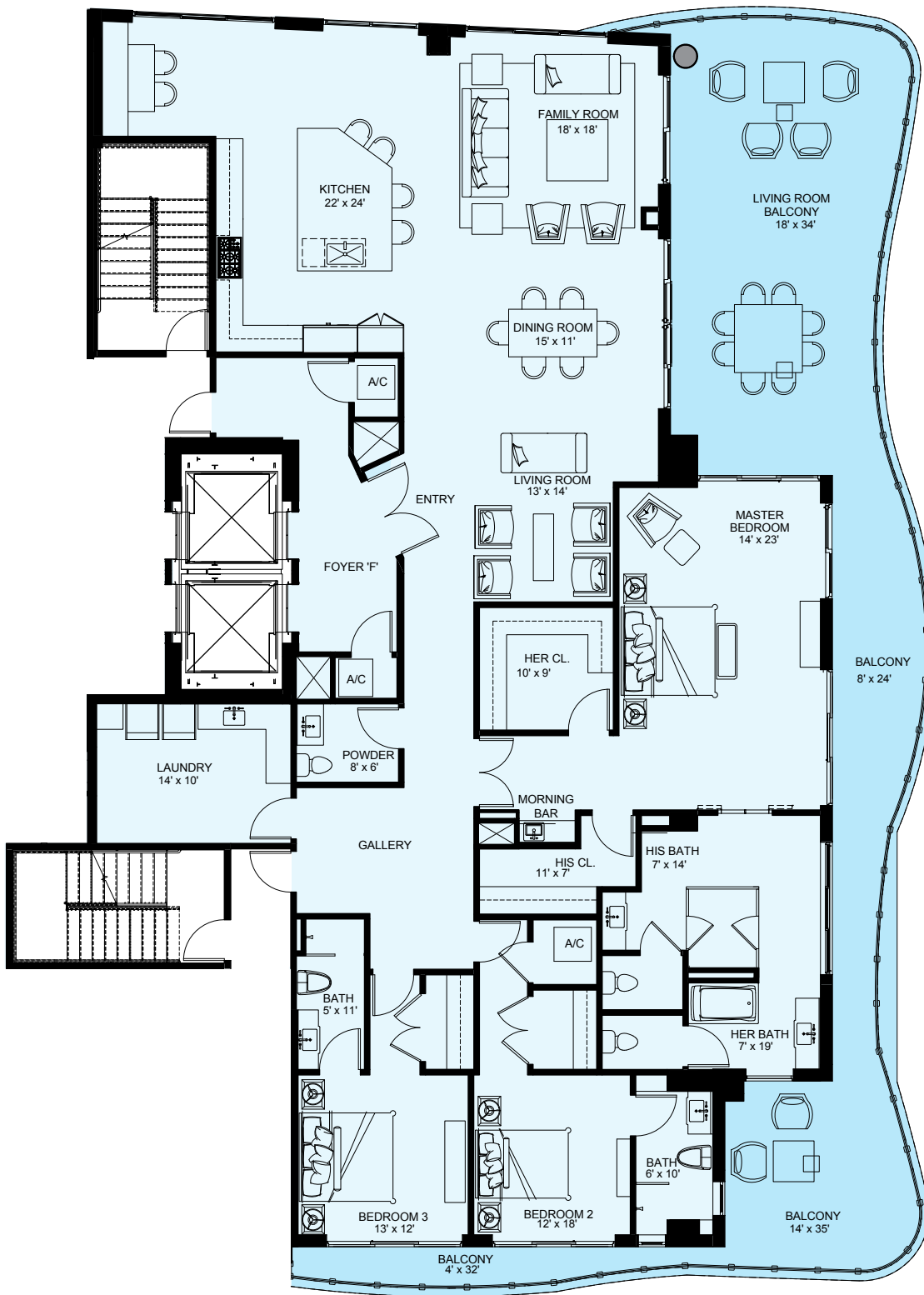


INTRACOASTAL
WATERWAY



ATLANTIC OCEAN

11th FLOOR



RESIDENCES: 321 NORTH BIRCH ROAD • FT. LAUDERDALE FLORIDA 33304
SALES OFFICE: 2400 E LAS OLAS BLVD • FT. LAUDERDALE FLORIDA 33301
855-920-9813 • 321FORTLAUDERDALE.COM

Stated square footages and dimensions of units are based on measurements to the exterior boundaries of the exterior walls and the centerline of interior demising walls between units and will vary from the square footages and dimensions of the unit that would be determined by using the description and definition of the "Unit" set forth in the Declaration (which generally only includes the interior airspace between the perimeter walls and excludes interior structural components and other common elements). This method of measurement is generally used in sales and marketing materials and is provided to allow a prospective buyer to compare the Units with 3 units in other condominium projects that utilize the same method. For your reference, the square footage of the Unit, determined in accordance with the definition of the "Unit" set forth in the Declaration, is + or - 3,282 sq. ft. for unit type F. Terraces, patios, balconies, yards and private garages are not part of the "Unit". Measurements and dimensions of rooms set forth on this floor plan are generally taken at the farthest points of each given room (as if the room were a perfect rectangle), without regard for any cutouts, soffits or other variations. Accordingly, the square footage of the actual room will typically be smaller than the product obtained by multiplying the stated length times width. All square footages, dimensions and measurements are estimates which are based on preliminary plans and will vary with actual construction. All floor plans, specifications and other development plans are proposed and conceptual only, and are subject to change and will not necessarily accurately reflect the final plans and specifications.

Developed by
321 Birch, LLC
Interiors
Interior Design
by Steven G. Mc
Exclusively Offered by
ENGEL & VÖLKERS

UNIT G

THE SALTON

3 Bedroom • 3.5 Bath

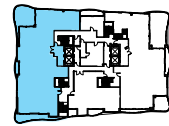
3 Balconies

3,747 A/C Sq. Ft.

722 Balcony Sq. Ft.

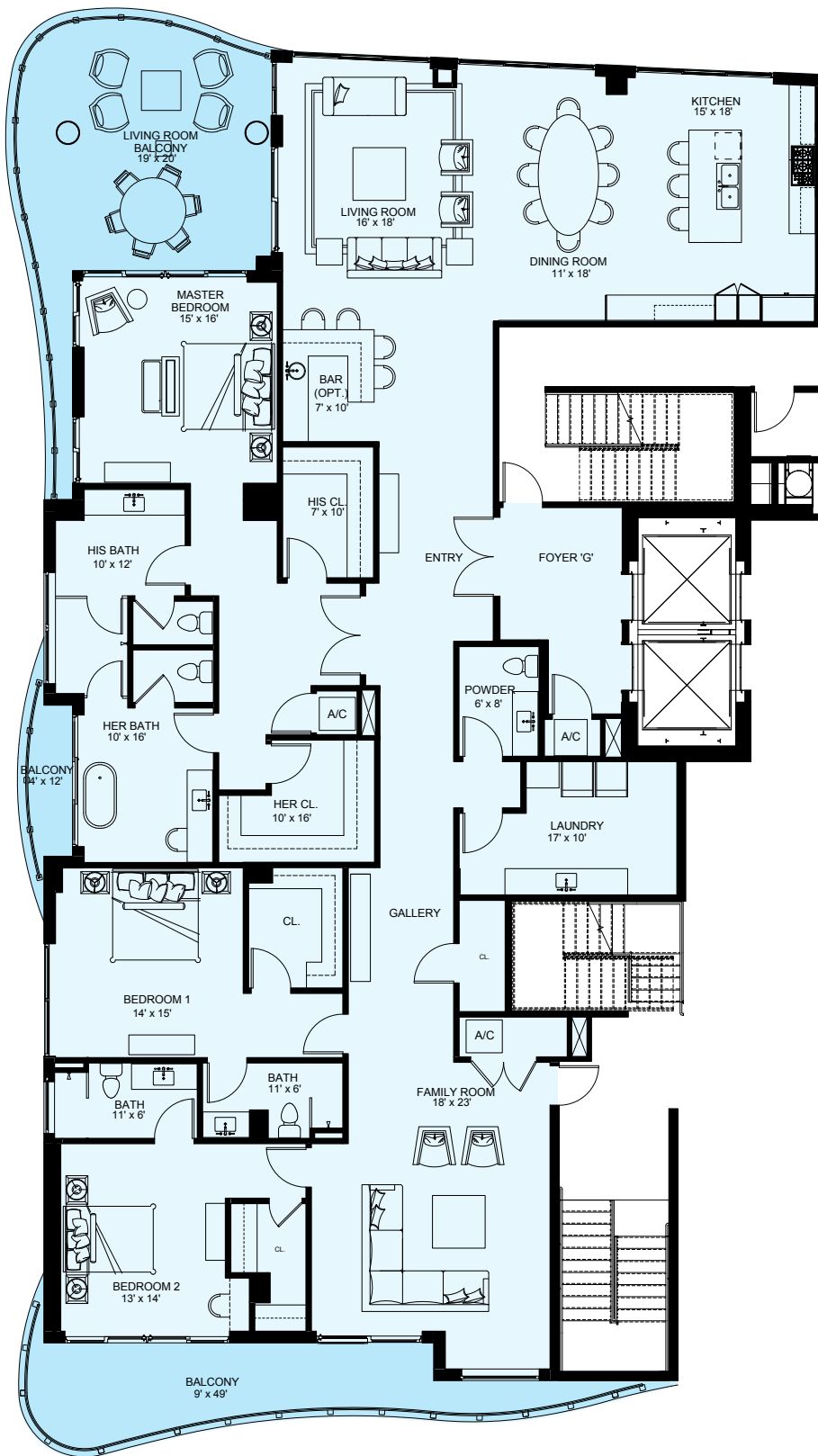
4,469 Total Sq. Ft.

INTRACOASTAL
WATERWAY



ATLANTIC OCEAN

4th FLOOR
N



RESIDENCES: 321 NORTH BIRCH ROAD • FT. LAUDERDALE FLORIDA 33304
SALES OFFICE: 2400 E LAS OLAS BLVD • FT. LAUDERDALE FLORIDA 33301
 855-920-9813 • 321FORTLAUDERDALE.COM

Stated square footages and dimensions of units are based on measurements to the exterior boundaries of the exterior walls and the centerline of interior demising walls between units and will vary from the square footages and dimensions of the unit that would be determined by using the description and definition of the "Unit" set forth in the Declaration (which generally only includes the interior airspace between the perimeter walls and excludes interior structural components and other common elements). This method of measurement is generally used in sales and marketing materials and is provided to allow a prospective buyer to compare the Units with 3 units in other condominium projects that utilize the same method. For your reference, the square footage of the Unit, determined in accordance with the definition of the "Unit" set forth in the Declaration, is + or - 3,747 sq. ft. for unit type G. Terraces, patios, balconies, yards and private garages are not part of the "Unit". Measurements and dimensions of rooms set forth on this floor plan are generally taken at the farthest points of each given room (as if the room were a perfect rectangle), without regard for any cutouts, soffits or other variations. Accordingly, the square footage of the actual room will typically be smaller than the product obtained by multiplying the stated length times width. All square footages, dimensions and measurements are estimates which are based on preliminary plans and will vary with actual construction. All floor plans, specifications and other development plans are proposed and conceptual only, and are subject to change and will not necessarily accurately reflect the final plans and specifications.

Developed by
321 Birch, LLC

Interiors
Interior Design
by Steven G. Mc

Exclusively Offered by
ENGEL & VÖLKERS

UNIT **H**

THE BERING

3 Bedroom • 3.5 Bath

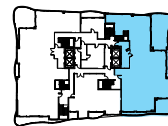
3 Balconies

3,199 A/C Sq. Ft.

978 Balcony Sq. Ft.

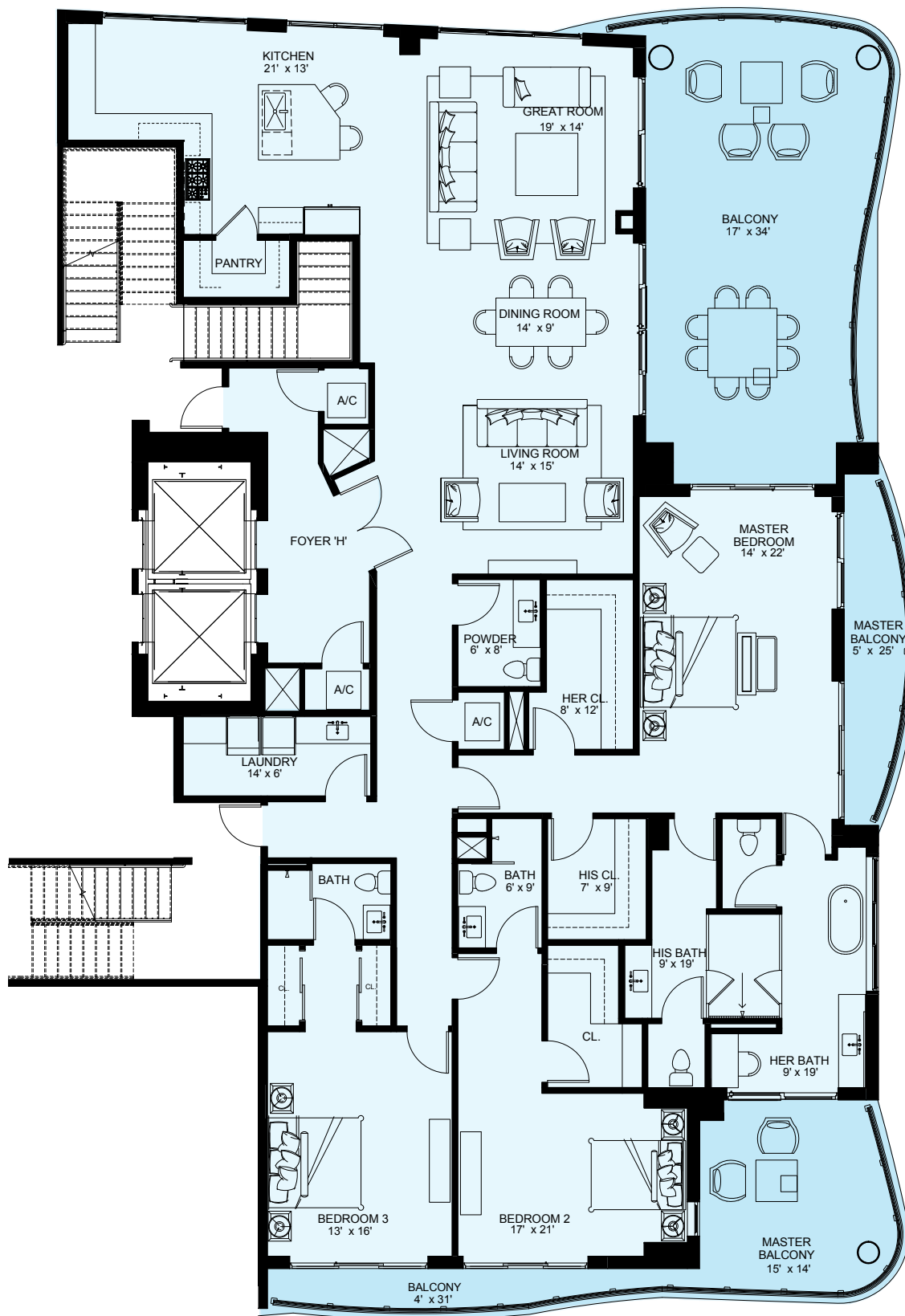
4,177 Total Sq. Ft.

INTRACOASTAL
WATERWAY



ATLANTIC OCEAN

4th FLOOR



321
AT WATER'S EDGE

RESIDENCES: 321 NORTH BIRCH ROAD • FT. LAUDERDALE FLORIDA 33304
SALES OFFICE: 2400 E LAS OLAS BLVD • FT. LAUDERDALE FLORIDA 33301
 855-920-9813 • 321FORTLAUDERDALE.COM

Stated square footages and dimensions of units are based on measurements to the exterior boundaries of the exterior walls and the centerline of interior demising walls between units and will vary from the square footages and dimensions of the unit that would be determined by using the description and definition of the "Unit" set forth in the Declaration (which generally only includes the interior airspace between the perimeter walls and excludes interior structural components and other common elements). This method of measurement is generally used in sales and marketing materials and is provided to allow a prospective buyer to compare the Units with 3 units in other condominium projects that utilize the same method. For your reference, the square footage of the Unit, determined in accordance with the definition of the "Unit" set forth in the Declaration, is + or - 3,199 sq. ft. for unit type H. Terraces, patios, balconies, yards and private garages are not part of the "Unit". Measurements and dimensions of rooms set forth on this floor plan are generally taken at the farthest points of each given room (as if the room were a perfect rectangle), without regard for any cutouts, soffits or other variations. Accordingly, the square footage of the actual room will typically be smaller than the product obtained by multiplying the stated length times width. All square footages, dimensions and measurements are estimates which are based on preliminary plans and will vary with actual construction. All floor plans, specifications and other development plans are proposed and conceptual only, and are subject to change and will not necessarily accurately reflect the final plans and specifications.

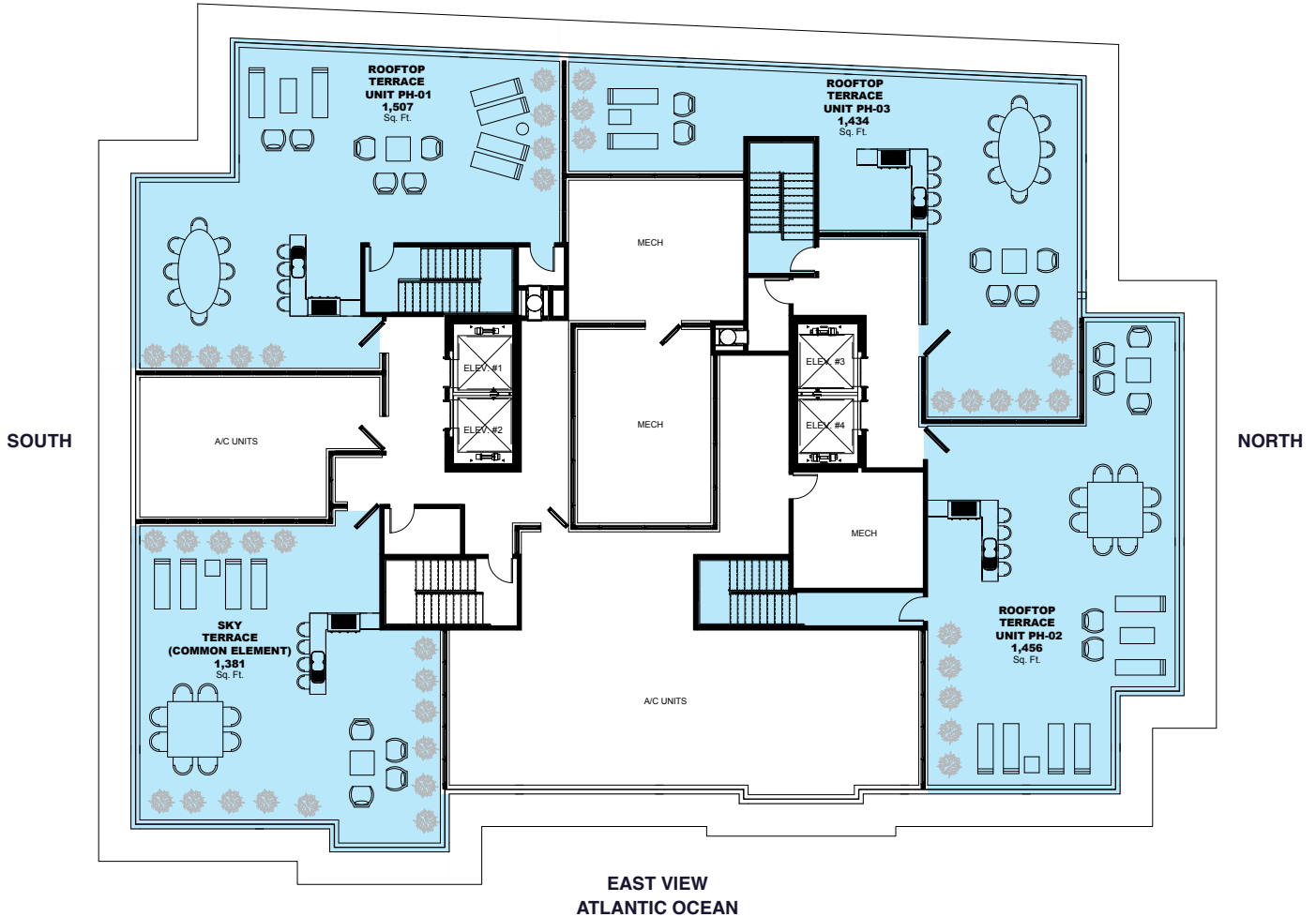
Developed by
321 Birch, LLC

Interiors
Interior Design
by Steven G. Mc

Exclusively Offered by
ENGEL & VÖLKERS

SKYVIEW TERRACES

INTRACOASTAL WATERWAY WEST VIEW



RESIDENCES: 321 NORTH BIRCH ROAD · FT. LAUDERDALE FLORIDA 33304
SALES OFFICE: 2400 E LAS OLAS BLVD · FT. LAUDERDALE FLORIDA 33301
 855-920-9813 · 321FORTLAUDERDALE.COM

Stated square footages and dimensions of units are based on measurements to the exterior boundaries of the exterior walls and the centerline of interior demising walls between units and will vary from the square footages and dimensions of the unit that would be determined by using the description and definition of the "Unit" set forth in the Declaration (which generally only includes the interior airspace between the perimeter walls and excludes interior structural components and other common elements). This method of measurement is generally used in sales and marketing materials and is provided to allow a prospective buyer to compare the Units with 3 units in other condominium projects that utilize the same method. For your reference, the square footage of the Unit, determined in accordance with the definition of the "Unit" set forth in the Declaration, is + or - 1,380 sq. ft. for skyview terrace. Terraces, patios, balconies, yards and private garages are not part of the "Unit". Measurements and dimensions of rooms set forth on this floor plan are generally taken at the farthest points of each given room (as if the room were a perfect rectangle), without regard for any cutouts, soffits or other variations. Accordingly, the square footage of the actual room will typically be smaller than the product obtained by multiplying the stated length times width. All square footages, dimensions and measurements are estimates which are based on preliminary plans and will vary with actual construction. All floor plans, specifications and other development plans are proposed and conceptual only, and are subject to change and will not necessarily accurately reflect the final plans and specifications.

Developed by
 321 Birch, LLC
 Interiors
 Interior Design
 Exclusively Offered by
 ENGEL & VÖLKERS