



**FOUR SEASONS**  
HOTEL AND PRIVATE RESIDENCES

*Fort Lauderdale*

A PROJECT BY FORT PARTNERS

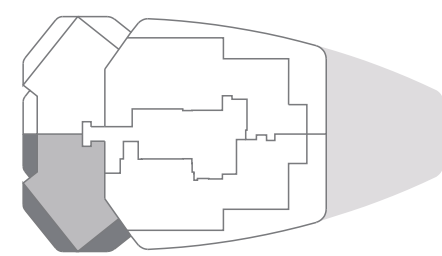
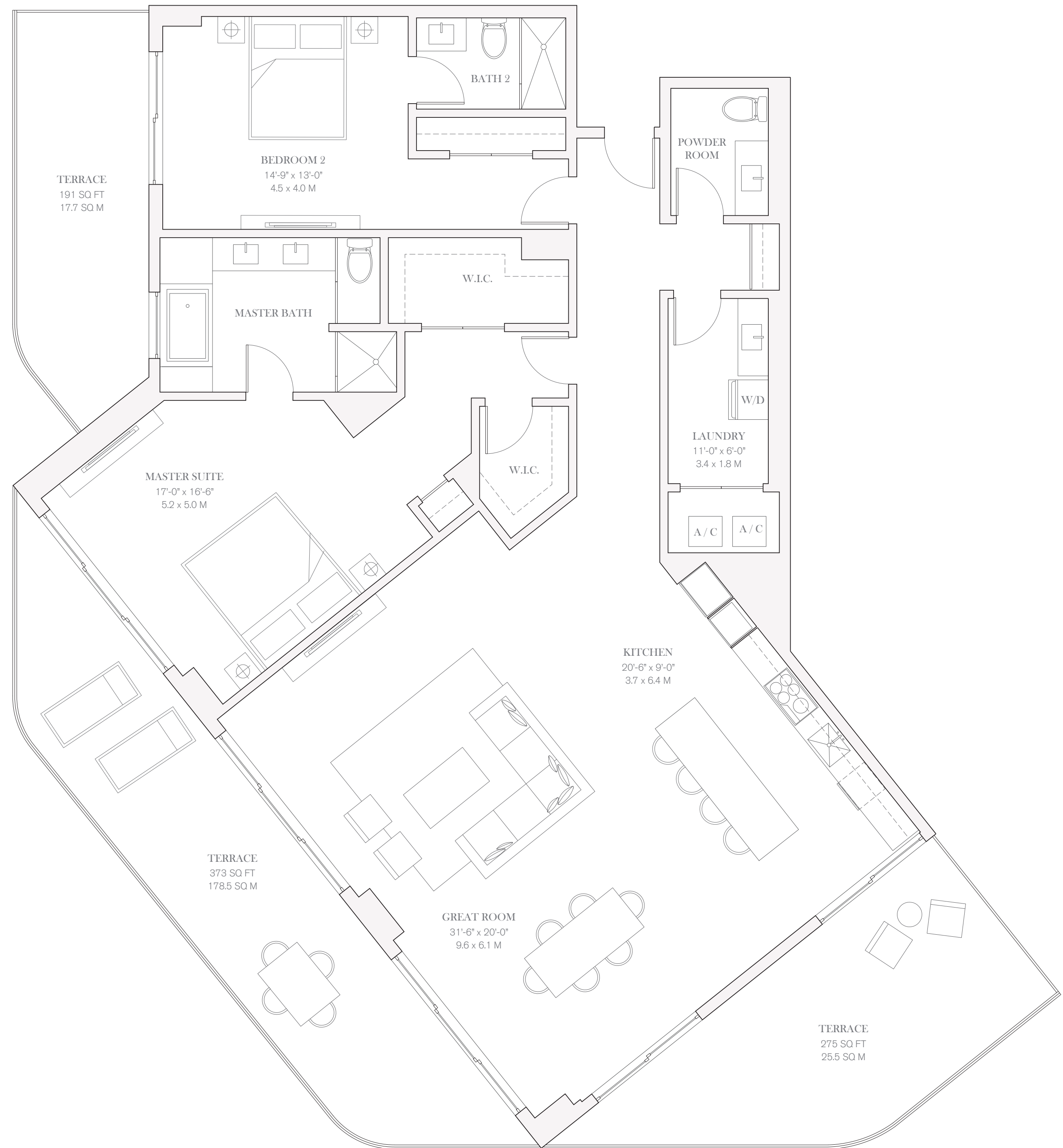
**PRIVATE  
RESIDENCE**

**1803, 1903, 2003**

TWO BEDROOMS  
TWO BATHROOMS  
POWDER ROOM

INTERIOR  
2,242 SQ FT / 208.3 SQ M

EXTERIOR  
838 SQ FT / 77.9 SQ M



OCEAN VIEW



0 1 2 4 8

## FOUR SEASONS LIVING

Four Seasons Private Residences Fort Lauderdale offers a prestigious home address with all the advantages of living in a grand hotel.

Four Seasons Hotel Fort Lauderdale joins a distinguished collection that includes some of the most preferred and awarded destinations in the world, including Four Seasons Hotel London at Park Lane, Four Seasons Resort Punta Mita and Four Seasons Resort The Biltmore Santa Barbara.

On a daily basis, homeowners enjoy a host of world-class services and à la carte enhancements, including 24-hour security, laundry and valet, grocery provisioning, business center assistance, as well as maintenance and repair support. Butler service and housekeeping are available, along with dog groomers and on-demand car service to and from the airport.

Guests can easily be accommodated at Four Seasons Hotel Fort Lauderdale. Entertaining is effortless, either at the Hotel or in the privacy of home, through 24-hour In-Residence Dining and event catering. The comprehensive Four Seasons approach to service allows residents to devote even more time to leisure activities and relaxation.

## PRIVATE RESIDENCES

- RESIDENCES WITH KITCHEN, BATHS, AND HARDWARE SELECTED BY PROMINENT BRITISH DESIGNER TARA BERNERD
- PRIVATE EXPANSIVE TERRACES WITH GLASS RAILINGS AND OCEAN AND CITY VIEWS
- FLOOR TO CEILING WINDOWS AND SLIDING DOORS THROUGHOUT RESIDENCE
- STONE FLOORING THROUGHOUT RESIDENCE
- LOFTY CEILING HEIGHTS
- DUPLEX RESIDENCES WITH DOUBLE-HEIGHT LIVING ROOMS AND BALCONIES
- KITCHEN APPLIANCES INCLUDING MIELE OR WOLF (COOK TOP, OVEN, MICROWAVE AND DISHWASHER) AND SUBZERO (REFRIGERATOR, FREEZER AND WINE COOLER)
- EUROPEAN CUSTOM CABINETRY IN KITCHENS, BATHROOMS AND LAUNDRY ROOMS
- BATHROOMS INCLUDE CUSTOM EUROPEAN VANITIES AND BRANDED SELECT FIXTURES AND HARDWARE
- LAUNDRY ROOMS
- LARGE WALK-IN CLOSETS
- PRIME COAT FINISHED WALLS
- PREWIRED FOR HIGH-SPEED INTERNET AND CABLE
- 24-HOUR RESIDENTIAL CONCIERGE SERVICES
- COMPLETE ACCESS TO FOUR SEASONS SERVICES

## RESIDENTIAL AMENITIES

Four Seasons Hotel and Private Residences Fort Lauderdale features a collection of approximately 65 Private Residences and 30 Hotel Residences envisioned by celebrated British designer Tara Bernerd. Elevated on the fifth to the twenty-second floor for the very best views, these exceptional simplex and duplex homes offer an array of sizes and features – ideal for a principal home/residence or pied-à-terre. Every owner benefits from complete peace of mind, knowing Four Seasons is on hand to take care of their every need.

- STATELY STRUCTURE TOWERING 22 STORIES ABOVE THE ATLANTIC SHORELINE DESIGNED BY FLORIDA ARCHITECT KOBİ KARP
- COVETED BEACHFRONT ADDRESS ON THE SANDS OF FORT LAUDERDALE BEACH
- LUSH, VERDANT GARDENS DESIGNED BY LANDSCAPE DESIGNER FERNANDO WONG
- DEDICATED PORTE-COCHÈRE ENTRANCE FOR RESIDENTS
- DEDICATED RESIDENTIAL LOBBY WITH SEPARATE ELEVATOR CORE AND HIGH-SPEED ELEVATORS
- DUAL POOL EXPERIENCES WITH LUXURY CABANAS INCLUDING AN ADULTS-ONLY POOL
- RESIDENTS-ONLY FITNESS CENTER
- UNDERGROUND PARKING GARAGE WITH SECURITY SURVEILLANCE
- ELECTRIC CAR CHARGING PORTS
- DEDICATED BICYCLE STORAGE

## MENU OF SERVICES

- |  |  |
|--|--|
| <h3 style="text-align: center; border-bottom: 1px solid black; margin-bottom: 10px;">BEACH BUTLER</h3> <ul style="list-style-type: none"> <li>DEDICATED ATTENTION WITH À-LA-CARTE SERVICES</li> <li>BEACH CHAIRS, BLANKETS AND BASKETS</li> <li>PICNIC ARRANGEMENTS</li> <li>SUNBATHING KITS</li> <li>SUNRISE AND SUNSET BEACH WALKS</li> <li>BEACH BADMINTON AND YOGA</li> <li>KITE FLYING AND SANDCASTLE BUILDING</li> </ul>   | <h3 style="text-align: center; border-bottom: 1px solid black; margin-bottom: 10px;">SERVICES</h3> <ul style="list-style-type: none"> <li>DESIGNATED FOUR SEASONS RESIDENTIAL CONCIERGE</li> <li>DESIGNATED FOUR SEASONS DIRECTOR OF RESIDENCES</li> <li>24-HOUR VALET AND SECURITY SERVICES</li> <li>24-HOUR IN-RESIDENCE DINING*</li> <li>BUTLER SERVICES*: <ul style="list-style-type: none"> <li>-PRE-ARRIVAL PROVISIONING</li> <li>-HOUSEKEEPING SERVICES</li> <li>-PRIVATE CAR SERVICE</li> </ul> </li> <li>IN-RESIDENCE SPA SERVICES* <ul style="list-style-type: none"> <li>* À-LA-CARTE SERVICES</li> </ul> </li> </ul> |
| <h3 style="text-align: center; border-bottom: 1px solid black; margin-bottom: 10px;">ENTERTAINING</h3> <ul style="list-style-type: none"> <li>SIGNATURE RESTAURANT WITH INTERIOR AND AL FRESCO SEATING</li> <li>ALL-DAY RESTAURANT ON THE THIRD-FLOOR OCEANFRONT TERRACE</li> <li>POOL BAR AND LOUNGE ON THE THIRD-FLOOR OCEANFRONT TERRACE</li> <li>OCEAN-VIEW OUTDOOR CAFÉ WITH INDOOR AND OUTDOOR SEATING,</li> <li>NESTLED IN TROPICAL LANDSCAPED GARDENS</li> </ul> | <h3 style="text-align: center; border-bottom: 1px solid black; margin-bottom: 10px;">LEISURE</h3> <ul style="list-style-type: none"> <li>OCEANFRONT TERRACE WITH DUAL POOL EXPERIENCES AND LUXURY CABANAS</li> <li>FOUR SEASONS SPA</li> <li>FITNESS CENTER</li> <li>KIDS FOR ALL SEASONS PROGRAM</li> </ul>   |

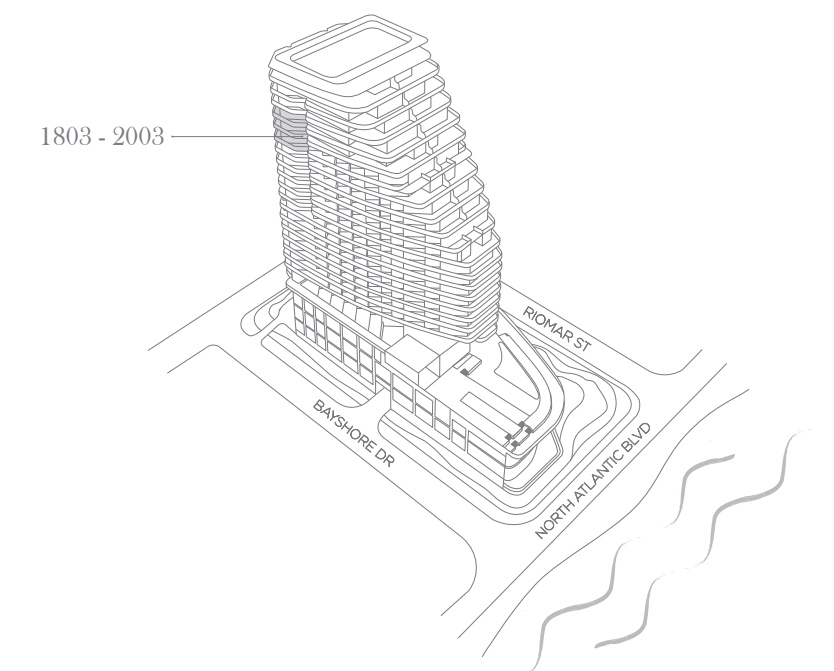


## PRIVATE RESIDENCE

**1803, 1903, 2003**

TWO BEDROOMS  
TWO BATHROOMS  
POWDER ROOM

INTERIOR  
2,242 SQ FT / 208.3 SQ M  
EXTERIOR  
838 SQ FT / 77.9 SQ M



1803 - 2003

954.363.0000  
FORT525RESIDENCES.COM



This is not an offer to sell, or solicitation of offers to buy, the condominium units in the state of NY or NJ, or any jurisdiction where such offer or solicitation cannot be made. Stated dimensions are measured to the exterior face of exterior walls and to the exterior face of walls adjoining corridors or other common elements. This method of measurement varies from, and is larger than, the dimensions that would be determined by using the description and the definition of the "net" sale set forth in the Declaration (which generally only includes the interior airspace between the perimeter walls and excludes structural components). Note that measurements of rooms set forth on this floor plan are generally taken at the greatest points of each given room (as if the room were a perfect rectangle), without regard for any curvatures or irregularities. Accordingly, the area of the actual room will typically be smaller than the product obtained by multiplying the stated length times width. All dimensions are approximate and may vary with actual construction. All floor plans and development plans are subject to change. The Developer expressly reserves the right to make modifications, revisions, and changes it deems desirable in its sole and absolute discretion. All depictions of furnishings, appliances, built-ins, counters, soffits, floor coverings, lighting and other matters of detail, including, without limitation, items of finish and decorations, are conceptual only and are not necessarily included in each Unit. Consult your prospectus and Purchase Agreement to determine what is included with your Unit purchase. If anything, this project is being developed by FTL JV LLC, which has a limited right to use the trademarked names and logos of Fort Partners pursuant to a licensing and marketing agreement with Fort Partners.

Four Seasons Private Residences Fort Lauderdale are not owned, developed or sold by Four Seasons Hotels Limited or its affiliate (Four Seasons). The Developer, FTL JV LLC, uses the Four Seasons trademarks and tradenames under a license from Four Seasons Hotels Limited. The marks "FOUR SEASONS," "FOUR SEASONS HOTELS AND RESORTS," any combination thereof and the Tree Design are registered trademarks of Four Seasons Hotels Limited in Canada and U.S.A. and of Four Seasons Hotels (Barbados) Ltd. elsewhere.

Fort Realty LLC is responsible for the sales of Four Seasons Private Residences Fort Lauderdale.