

SCALE 1/4" = 1'-0"

FLOOR PLAN

AREAS	
FINISH	3,628 SQ. FT.
BASE BLCOM	4,378 SQ. FT.
TOTAL LIVING	8,006 SQ. FT.
2-CAR GARAGE	800 SQ. FT.
FRONT PORCH	189 SQ. FT.
REAR PORCH	622 SQ. FT.
BACK PATIO	682 SQ. FT.
TOTAL UNDER ROOF	6,510 SQ. FT.

Plan No. <b>g</b> Date <b>4 of 9</b> December 2015	Plans By: <b>Dare to Dream</b> Home Design, LLC 806-683-0303	A New Home By: <b>Red Custom Homes, L.L.C</b> 19081 Edge Cove	Contact Info:	Copyright © 2015 <b>Dare to Dream</b> Home Design, LLC In order to preserve confidentiality, this plan is protected under the creative works copyright law and may not be copied, reproduced, or otherwise used in any way without written permission by the designer.
--	---	---	---------------	--

**A New Home By:**  
**Red Custom Homes, LLC**  
 19081 Edge Cove

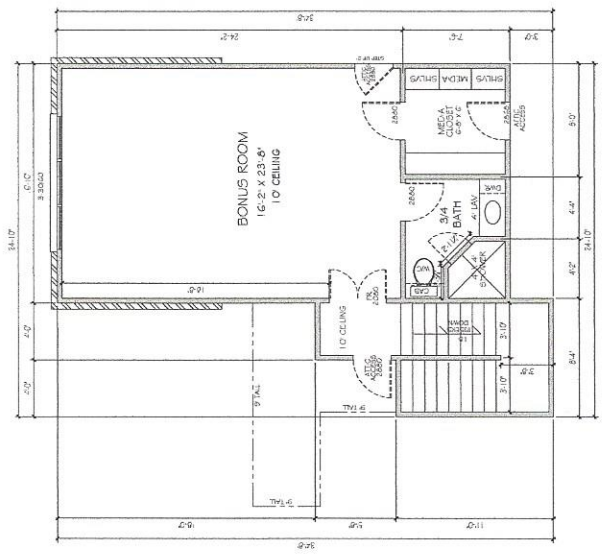
**Dare to Dream**  
 Home Design, LLC  
 806-683-0303

**Plans By:**  
 Kim Hudson  
 Date: December 2015  
 Sheet: 5 of 9  
 2nd Floor Plan  
 No. D-1328-3

Contact Info:

Copyright © 2015  
 Dare to Dream  
 Home Design, LLC  
 All rights reserved. This drawing is the property of Dare to Dream Home Design, LLC. It is to be used only for the project and site specified herein. No part of this drawing may be reproduced, stored in a retrieval system, or transmitted in any form or by any means, electronic, mechanical, photocopying, recording, or by any information storage and retrieval system, without the prior written permission of Dare to Dream Home Design, LLC.

GENERAL NOTES	
1.	ALL DIMENSIONS ARE TO FACE UNLESS OTHERWISE NOTED.
2.	ALL WALLS ARE TO BE CONCRETE BLOCK WITH INTERIOR FINISH.
3.	ALL FLOORS ARE TO BE 4" CONCRETE ON 2" GYPSUM BOARD OVER 1" POLYSTYRENE INSULATION ON 4" GRAVEL ON 4" COMPACTED EARTH.
4.	ALL CEILING ARE TO BE 5/8" GYPSUM BOARD OVER 1" POLYSTYRENE INSULATION ON 2" STUDS.
5.	ALL ROOFS ARE TO BE 2" POLYSTYRENE INSULATION ON 2" STUDS.
6.	ALL EXTERIOR WALLS ARE TO BE 8" CONCRETE BLOCK WITH EXTERIOR FINISH.
7.	ALL EXTERIOR DOORS ARE TO BE 6'0" X 2'0" WITH 1" POLYSTYRENE INSULATION ON 2" STUDS.
8.	ALL EXTERIOR WINDOWS ARE TO BE 6'0" X 4'0" WITH 1" POLYSTYRENE INSULATION ON 2" STUDS.
9.	ALL INTERIOR DOORS ARE TO BE 6'0" X 2'0" WITH 1" POLYSTYRENE INSULATION ON 2" STUDS.
10.	ALL INTERIOR WALLS ARE TO BE 5/8" GYPSUM BOARD OVER 1" POLYSTYRENE INSULATION ON 2" STUDS.
11.	ALL INTERIOR CEILING ARE TO BE 5/8" GYPSUM BOARD OVER 1" POLYSTYRENE INSULATION ON 2" STUDS.
12.	ALL INTERIOR FLOORS ARE TO BE 4" CONCRETE ON 2" GYPSUM BOARD OVER 1" POLYSTYRENE INSULATION ON 4" GRAVEL ON 4" COMPACTED EARTH.
13.	ALL INTERIOR ROOFS ARE TO BE 2" POLYSTYRENE INSULATION ON 2" STUDS.
14.	ALL EXTERIOR ROOFS ARE TO BE 2" POLYSTYRENE INSULATION ON 2" STUDS.
15.	ALL EXTERIOR WALLS ARE TO BE 8" CONCRETE BLOCK WITH EXTERIOR FINISH.
16.	ALL EXTERIOR DOORS ARE TO BE 6'0" X 2'0" WITH 1" POLYSTYRENE INSULATION ON 2" STUDS.
17.	ALL EXTERIOR WINDOWS ARE TO BE 6'0" X 4'0" WITH 1" POLYSTYRENE INSULATION ON 2" STUDS.
18.	ALL INTERIOR DOORS ARE TO BE 6'0" X 2'0" WITH 1" POLYSTYRENE INSULATION ON 2" STUDS.
19.	ALL INTERIOR WALLS ARE TO BE 5/8" GYPSUM BOARD OVER 1" POLYSTYRENE INSULATION ON 2" STUDS.
20.	ALL INTERIOR CEILING ARE TO BE 5/8" GYPSUM BOARD OVER 1" POLYSTYRENE INSULATION ON 2" STUDS.
21.	ALL INTERIOR FLOORS ARE TO BE 4" CONCRETE ON 2" GYPSUM BOARD OVER 1" POLYSTYRENE INSULATION ON 4" GRAVEL ON 4" COMPACTED EARTH.
22.	ALL INTERIOR ROOFS ARE TO BE 2" POLYSTYRENE INSULATION ON 2" STUDS.
23.	ALL EXTERIOR ROOFS ARE TO BE 2" POLYSTYRENE INSULATION ON 2" STUDS.
24.	ALL EXTERIOR WALLS ARE TO BE 8" CONCRETE BLOCK WITH EXTERIOR FINISH.
25.	ALL EXTERIOR DOORS ARE TO BE 6'0" X 2'0" WITH 1" POLYSTYRENE INSULATION ON 2" STUDS.
26.	ALL EXTERIOR WINDOWS ARE TO BE 6'0" X 4'0" WITH 1" POLYSTYRENE INSULATION ON 2" STUDS.
27.	ALL INTERIOR DOORS ARE TO BE 6'0" X 2'0" WITH 1" POLYSTYRENE INSULATION ON 2" STUDS.
28.	ALL INTERIOR WALLS ARE TO BE 5/8" GYPSUM BOARD OVER 1" POLYSTYRENE INSULATION ON 2" STUDS.
29.	ALL INTERIOR CEILING ARE TO BE 5/8" GYPSUM BOARD OVER 1" POLYSTYRENE INSULATION ON 2" STUDS.
30.	ALL INTERIOR FLOORS ARE TO BE 4" CONCRETE ON 2" GYPSUM BOARD OVER 1" POLYSTYRENE INSULATION ON 4" GRAVEL ON 4" COMPACTED EARTH.
31.	ALL INTERIOR ROOFS ARE TO BE 2" POLYSTYRENE INSULATION ON 2" STUDS.
32.	ALL EXTERIOR ROOFS ARE TO BE 2" POLYSTYRENE INSULATION ON 2" STUDS.
33.	ALL EXTERIOR WALLS ARE TO BE 8" CONCRETE BLOCK WITH EXTERIOR FINISH.
34.	ALL EXTERIOR DOORS ARE TO BE 6'0" X 2'0" WITH 1" POLYSTYRENE INSULATION ON 2" STUDS.
35.	ALL EXTERIOR WINDOWS ARE TO BE 6'0" X 4'0" WITH 1" POLYSTYRENE INSULATION ON 2" STUDS.
36.	ALL INTERIOR DOORS ARE TO BE 6'0" X 2'0" WITH 1" POLYSTYRENE INSULATION ON 2" STUDS.
37.	ALL INTERIOR WALLS ARE TO BE 5/8" GYPSUM BOARD OVER 1" POLYSTYRENE INSULATION ON 2" STUDS.
38.	ALL INTERIOR CEILING ARE TO BE 5/8" GYPSUM BOARD OVER 1" POLYSTYRENE INSULATION ON 2" STUDS.
39.	ALL INTERIOR FLOORS ARE TO BE 4" CONCRETE ON 2" GYPSUM BOARD OVER 1" POLYSTYRENE INSULATION ON 4" GRAVEL ON 4" COMPACTED EARTH.
40.	ALL INTERIOR ROOFS ARE TO BE 2" POLYSTYRENE INSULATION ON 2" STUDS.
41.	ALL EXTERIOR ROOFS ARE TO BE 2" POLYSTYRENE INSULATION ON 2" STUDS.
42.	ALL EXTERIOR WALLS ARE TO BE 8" CONCRETE BLOCK WITH EXTERIOR FINISH.
43.	ALL EXTERIOR DOORS ARE TO BE 6'0" X 2'0" WITH 1" POLYSTYRENE INSULATION ON 2" STUDS.
44.	ALL EXTERIOR WINDOWS ARE TO BE 6'0" X 4'0" WITH 1" POLYSTYRENE INSULATION ON 2" STUDS.
45.	ALL INTERIOR DOORS ARE TO BE 6'0" X 2'0" WITH 1" POLYSTYRENE INSULATION ON 2" STUDS.
46.	ALL INTERIOR WALLS ARE TO BE 5/8" GYPSUM BOARD OVER 1" POLYSTYRENE INSULATION ON 2" STUDS.
47.	ALL INTERIOR CEILING ARE TO BE 5/8" GYPSUM BOARD OVER 1" POLYSTYRENE INSULATION ON 2" STUDS.
48.	ALL INTERIOR FLOORS ARE TO BE 4" CONCRETE ON 2" GYPSUM BOARD OVER 1" POLYSTYRENE INSULATION ON 4" GRAVEL ON 4" COMPACTED EARTH.
49.	ALL INTERIOR ROOFS ARE TO BE 2" POLYSTYRENE INSULATION ON 2" STUDS.
50.	ALL EXTERIOR ROOFS ARE TO BE 2" POLYSTYRENE INSULATION ON 2" STUDS.



AREAS	
LIVING ROOM	3,847.50 SQ. FT.
DINING ROOM	855.50 SQ. FT.
TOTAL LIVING	4,703.00 SQ. FT.
2-CAR GARAGE	600.00 SQ. FT.
FRONT PORCH	180.00 SQ. FT.
GARAGE PORCH	60.00 SQ. FT.
BACK PATIO	650.00 SQ. FT.
TOTAL UNDER ROOF	6,193.00 SQ. FT.

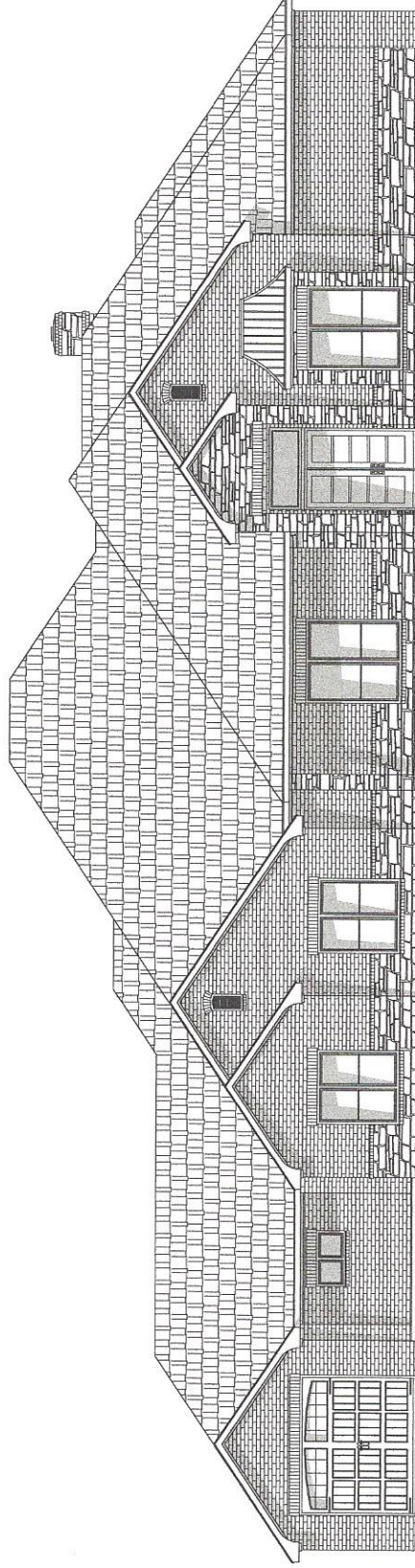
**2ND FLOOR PLAN**  
 SCALE: 1/4" = 1'-0"

*A New Home By:*

# *Red Custom Homes, LLC*

*19081 Edge Cove*

*Plan # D-1328-3  
Red Custom Homes, LLC  
19081 Edge Cove*



**D&D**  
*Dare to Dream*  
*Home Design, LLC*