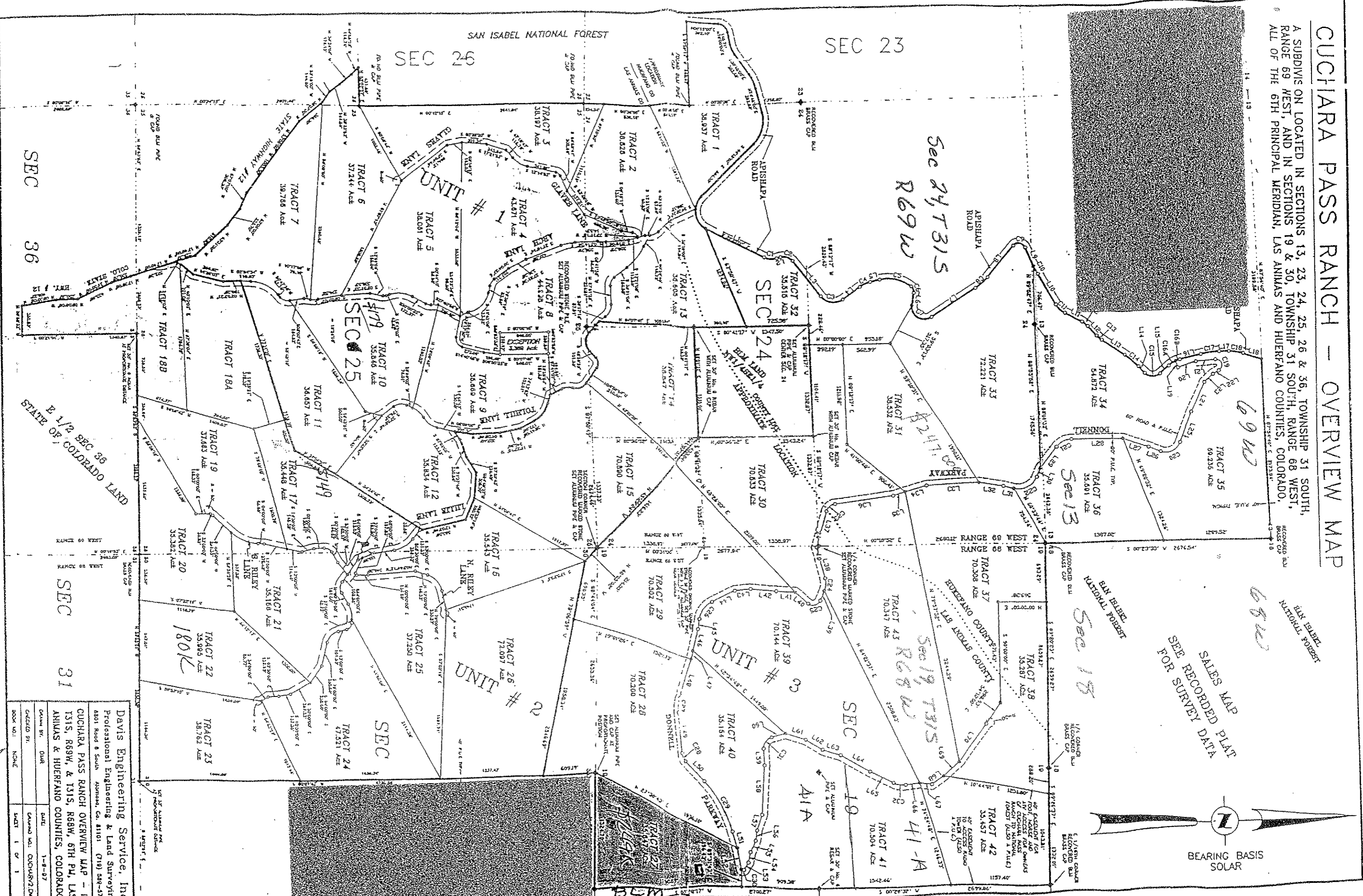
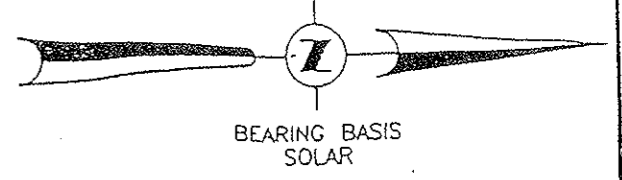


CUCHIARA PASS RANCH - OVERVIEW MAP

A SUBDIVISION LOCATED IN SECTIONS 13, 23, 24, 25, 26 & 36, TOWNSHIP 31 SOUTH, RANGE 69 WEST, AND IN SECTIONS 19 & 30, TOWNSHIP 31 SOUTH, RANGE 68 WEST, ALL OF THE 6TH PRINCIPAL MERIDIAN, LAS ANIMAS AND HUERFANO COUNTIES, COLORADO.



SALES MAP
SEE RECORDED PLAT
FOR SURVEY DATA



Davis Engineering Service, Inc.
Professional Engineering & Land Surveying
4801 Road 6 South Animas, Co. 8101 (719) 589-5771
CUCHARA PASS RANCH OVERVIEW MAP - IN
T31S, R69W, & T31S, R68W, 6TH PM, LAS
ANIMAS & HUERFANO COUNTIES, COLORADO

Checked By:	Date:	Checked By:	Date:
BOOK NO.:	NONE	SHEET:	1 OF 1