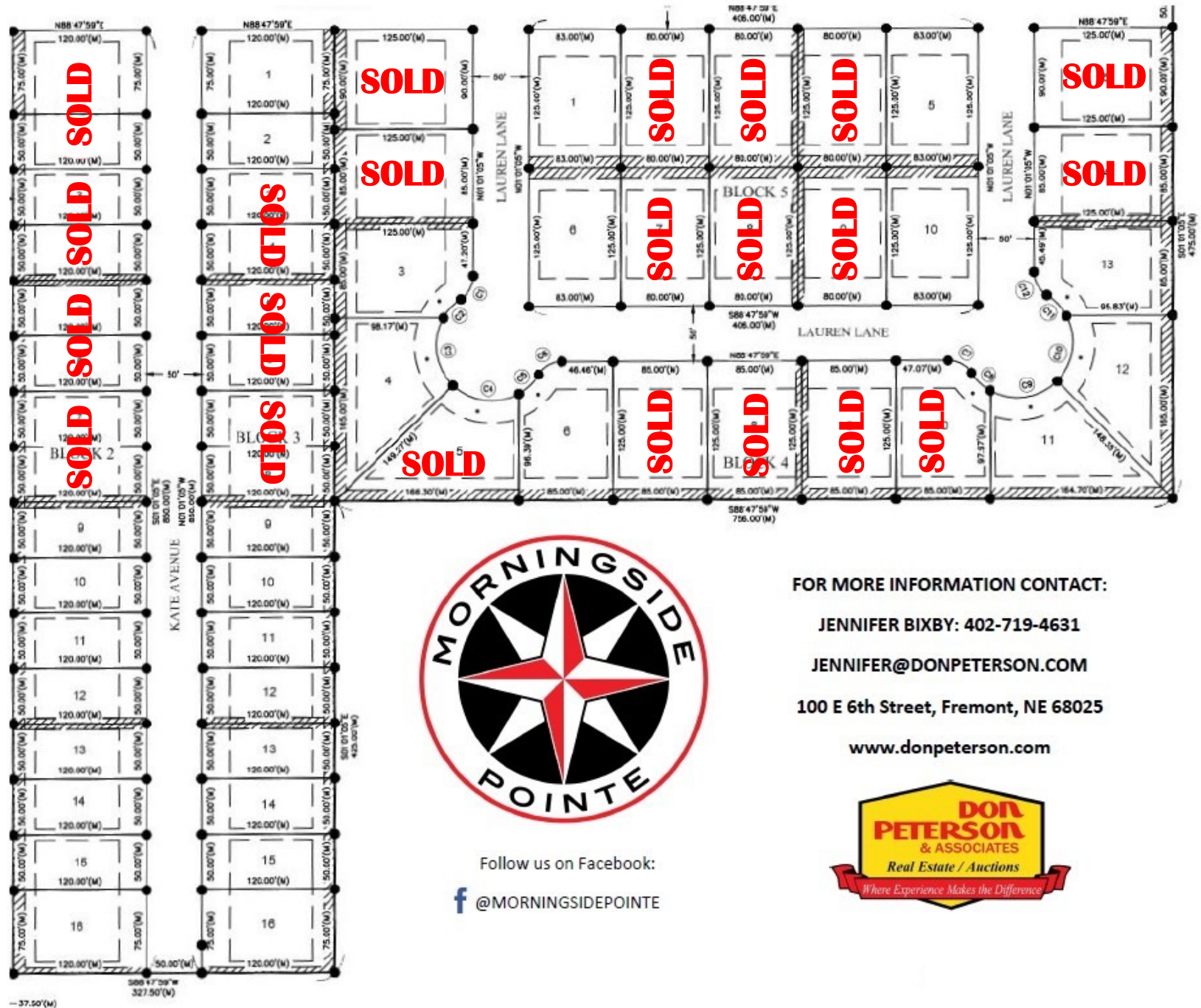


MORNINGSIDE POINTE SUBDIVISION



Follow us on Facebook:

 @MORNINGSIDPOINTE

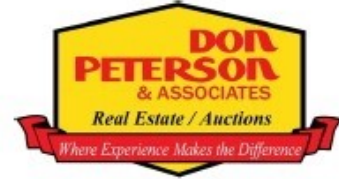
FOR MORE INFORMATION CONTACT:

JENNIFER BIXBY: 402-719-4631

JENNIFER@DONPETERSON.COM

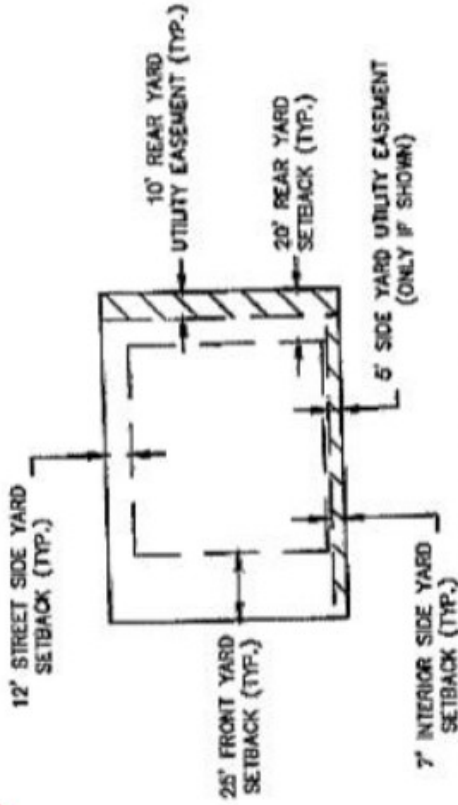
100 E 6th Street, Fremont, NE 68025

www.donpeterson.com





TYPICAL LOT DETAIL
BLOCKS 4 AND 5



*NOTE: FRONT YARD SETBACK ALONG ARC ON LOTS 3-5 AND 10-13, BLOCK 4 SHALL BE 20'.

TYPICAL LOT DETAIL
BLOCKS 2 AND 3

